

# NATIONALS CHOOSE THEIR CANDIDATES

### Fusion Ticket Announced by State Chairman Cleaver.

## OSWALD WEST LEADS LIST

Walter M. Pierce endorsed for Governor and A. W. Lafferty for Congress in Third District.

Eleven recommendations are made to the voters by the new National party, which is a fusion of Prohibitionists, Socialists, radical Democrats and whatnot. George Cleaver, who is state chairman of the party for Oregon, admits that the endorsements have been given for the most part without solicitation.

Leading the list is Oswald West, Democratic candidate for United States Senator. Walter M. Pierce, Democratic candidate for Governor, is another of the endorsements. Judge John S. Coke is recommended for Justice of the Oregon Supreme Court, and A. W. Lafferty is the selection of the National party for Congress in the Third District. No Congressional recommendations were made for the First and Second Congressional Districts.

Seven Picked for Legislature. Only seven candidates for the Legislature have been picked for the support of the National party. Of the seven, two are regular Republican nominees and the rest are National-Progressives. No Democrat, as such, has been endorsed for the Legislative ticket. The National party in making its selections avoided candidates for the State Senate.

As endorsed, the Legislative ticket consists as follows: Eugene B. Smith, Republican; Oscar W. Horne, Republican. These two are backed by organized labor and were labor candidates in the Republican primaries. W. P. Amos, Prohibitionist; Joseph K. Hart, National-Progressive; J. W. Newell, National-Progressive; Ada Wallace, Unruh, National-Progressive; Emma Wold, National-Progressive. Miss Wold is a sister of the militant suffragette who has been creating disturbances at Washington, D. C.

Labor Backs Oscar Horne. Gossip from labor circles is to the effect that labor will not take an active part in the campaign, other than to get behind Oscar Horne, candidate for City Commissioner. Mr. Horne is also a candidate for Representative, but opinions rendered say that he can do this without a clash. As there is very little likelihood of a contest in the Legislative campaign, the Horne forces are directing their energies chiefly to his candidacy for City Commissioner. It is because of this, according to labor leaders, that organized labor has no intention of endorsing a number of candidates, preferring to concentrate on Mr. Horne. In his absence from Portland in New York, Mr. Horne had charge of constructing part of the original subway and other large building enterprises. He helped build the first incinerator in Portland and has helped build several of the sewer systems of this city, as well as being superintendent of construction on a number of Portland's large buildings.

While in Portland yesterday, Justice Olson gave a little time to his campaign. "I can't do much, for I am on the job in the Supreme Court," he explained. "I have handed down three decisions in three weeks, which is the average. Owing to my duties on the bench I am depending on my friends to make my campaign for me."

Genevieve Hyatt, a seven-year-old girl, is an enthusiastic campaigner for S. C. Pier, candidate for City Commissioner. The little girl secured a number of the Pier picture posters and went around her neighborhood asking that the cards be placed in the windows, as "Mr. Pier is a good man."

## MANY WILL WEAR MASKS

### Downtown Workers Asked to Take Precautionary Measure.

A large number of offices and business houses have asked their employees to appear with face masks Monday morning as a precaution against Spanish influenza. Here are the Red Cross directions for making the mask:

Take gauze 26 inches wide and 43 inches long. Divide into 10 strips nine inches wide. Fold each strip into halves, then into thirds, making six thicknesses of gauze. Turn all raw edges and stitch all four sides to hold firmly. The mask now measures 7 by 8 inches. Put three pleats on 7-inch end, lower pleat deeper than other two to allow room for chin. Width at end after pleats are laid, 3 1/2 inches. Attach a tape 12 inches long to each of the four corners. Place a black thread in center of mask to designate outer side.

## OLD-STYLE COAT IS GONE

### Railroad Conductors Conserve in Purchasing Uniforms.

Conservation is being practiced by passenger conductors on the railroads of the United States, under approval of the heads, in the adoption of the modern coat to replace the frock coat. From the fashions of earlier times in the railroad history of the country came down the style of coat generally worn by the knights of the punch. Now that cloth, which formerly cost \$2.50 a yard, has gone to three or four times that price. So far as the Spokane, Portland and Seattle is concerned, Superintendent Little is sponsor for the newest fashion in coats.

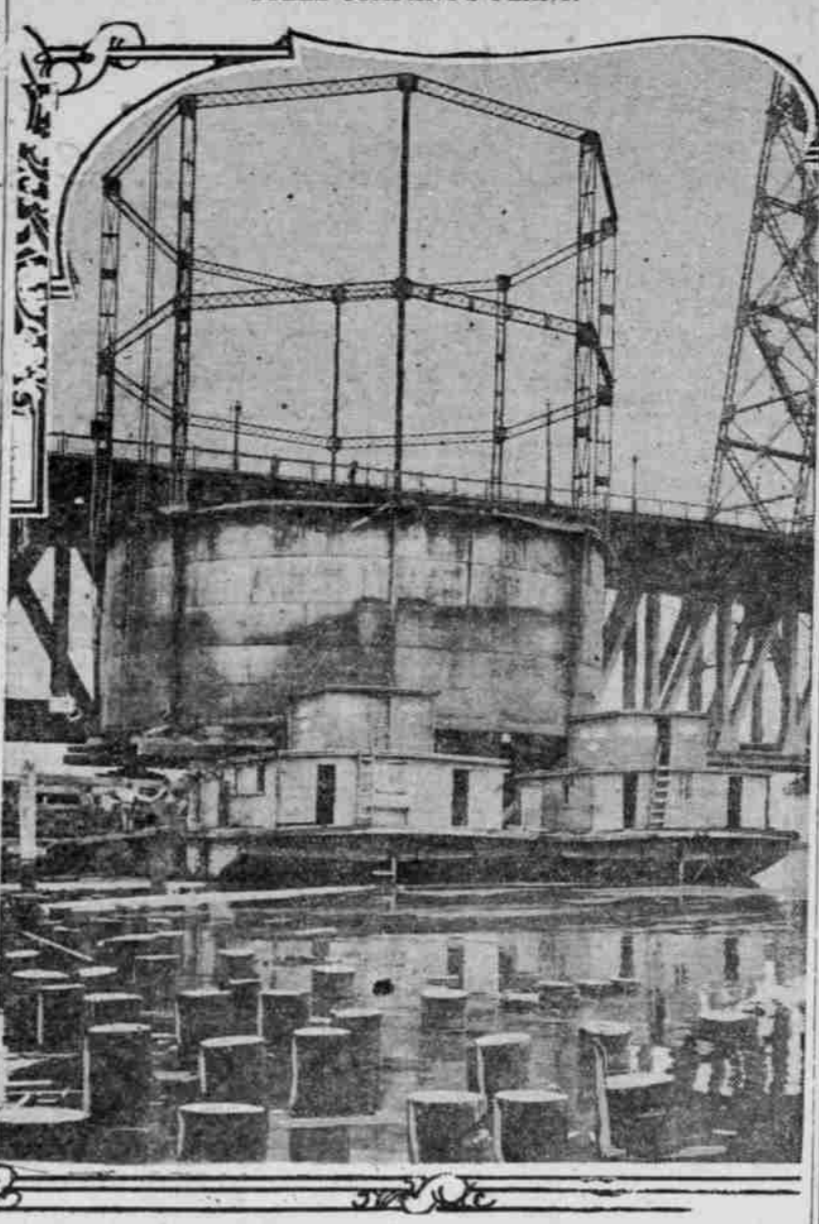
## Postal Station to Move.

Postal Station E, which has been located on Glisan street, will be moved today to the new building on Broadway, between Glisan and Hoyt streets, and Station G will move as soon as its quarters are completed. It is estimated the main office, with its executive staff and working force, will be in the new building a week from today, while other Federal departments will move as their quarters are completed. December 1 is fixed as the date when the new building will be completed in every detail.

## Barney Goldberg Sentenced.

Barney Goldberg, who was arrested some time ago on a charge of bringing intoxicating liquor from California into Oregon, was sentenced yesterday by Federal Judge Bean to three months in the Multnomah County Jail. James H. Garrett, who was held on a charge of bringing liquor from Wyoming into Oregon, entered a plea of guilty and was sentenced by Judge Bean to 30 days in the County Jail.

VIEW OF BIG GAS TANK BEING MOVED TO BARGES FOR TRANSPORTATION UP THE RIVER TO THE NORTHWEST STEEL COMPANY'S PLANT.



Final Stage of Journey to River. Shortly After This Photograph Was Taken the Barges Left Their Moorings in Tow of the Steamer Henderson.

## MOVING HUGE TANK FEAT

### JOB IS FIRST OF KIND PERFORMED ON PACIFIC COAST.

### Gas Receptacle Weighing 250 Tons Successfully Towed to Northwest Steel Company Plant.

The moving of a big gas tank this week by water from First and Everett streets to the northwest Steel Company's plant for use in ship construction was the first event of the kind attempted on the Pacific Coast. The tank was built for the Portland Gas & Coke Company in 1893 by the Stacy Manufacturing Company at a cost of \$25,000. It weighs 250 tons and has a capacity for 15,000 cubic feet of gas. Clay S. Morse had the contract for moving it, with D. J. Disler, who built the Vista House, construction engineer in charge. Trolley wires and posts along First street were the first obstacles encountered, and several poles had to be removed. This done, the ponderous tank was put on a temporary track of heavy timbers. Hardwood rollers, with block and tackle and a large gasoline engine were employed to move the tank to the foot of Flanders street, where it was loaded on two barges lashed together. During this stage of the operation all

passing boats cut off their power and drifted past to minimize the wash. When ready the steamer Henderson took the barges in tow and backed up stream to the new location. Loading and unloading again at the steel yards, where it had to be run over 1000 feet of sand, was the difficult part, as the load was very heavy and awkward to handle. Disler has been working with his two crews 18 hours a day, and will continue for about two more weeks before the tank is placed in its final position. The tank will insure an even and steady supply of gas to the Northwest and Columbia yards. It was moved at the expense of the Portland Gas & Coke Company, which supplies all shipyards here with gas.

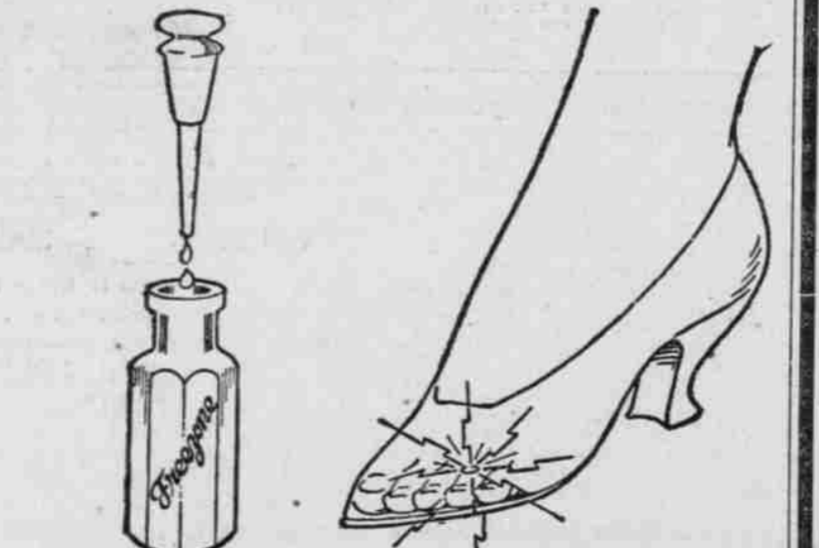
## J. H. BABCOCK IS BETTER

### Proprietor of Restaurant Recovering From Broken Leg.

James H. Babcock, proprietor of Bab's Restaurant, at Broadway and Stark street, who suffered a broken leg in an accident a week ago, is recovering rapidly at the Good Samaritan Hospital. He will be able to resume his duties as president and general manager of the restaurant within a week or two. Mr. Babcock is well known all along the Pacific Coast and in the East. He has operated restaurants in San Francisco, Los Angeles, San Diego, as well as in Nome, Alaska, and in New York and other Eastern cities.

## Lift Off Corns!

### "Freezone" is Magic! Lift any Corn or Callus right off with fingers—No pain!



Drop a little Freezone on an aching corn, instantly that corn stops hurting, then you lift it right out. It doesn't hurt one bit. Yes, magic! Why wait? Your druggist sells a tiny bottle of Freezone for a few cents, sufficient to rid your feet of every hard corn, soft corn, or corn between the toes, and calluses, without soreness or irritation. Freezone is the much talked of other discovery of a Cincinnati genius.

## Millions Use It For Colds

### Because "Pape's Cold Compound" relieves cold or gripe misery in a few hours—Really wonderful!

Don't stay stuffed-up! Quit blowing and snuffling! A dose of "Pape's Cold Compound" taken every two hours until three doses are taken will end gripe misery and break up a severe cold either in the head, chest, body or limbs. It promptly opens clogged-up nostrils and air passages, stops nasty discharge or nose running, relieves sick headache, dullness, feverishness, sore throat, sneezing, soreness and stiffness. "Pape's Cold Compound" is the quickest, surest relief known and costs only a few cents at drugstores. It acts without assistance, tastes nice, and causes no inconvenience. Don't accept a substitute. Insist on "Pape's"—nothing else.—Adv.

## Why Change?



### Justice Conrad P. Olson

was appointed by the Governor from a state-wide field of aspirants.

He is square, able and aggressive and has a capacity for effective work.

Resigning his Senatorship, leaving his campaign to his friends, he has taken up his duties as Justice and has already handed down several opinions. In all fairness his appointment should be confirmed by election on November 5.

Be sure and write his name and make an X as shown below.

### JUSTICE OF SUPREME COURT, Vote for One

To fill vacancy caused by death of Justice Frank A. Moore.

# X Conrad P. Olson

Paid Adv. by Olson for Justice Committee, 530 C. of C. Bldg., Portland, Or.

## SPECIAL NOTICE To the Public

Telephone inquiries from Minneapolis physicians and the laity, and letters from many parts of America, are coming into our office regarding the use of Benetol in the treatment and prevention of Spanish Influenza. Therefore I am employing the public press to answer two vital questions.

1st. Is Benetol effective against the germs of Spanish Influenza? YES, Benetol has already proved itself a powerful bulwark in preventing and treating this disease as evidenced by medical reports already received. A home protected by intelligent use of Benetol may banish fear.

2d. How should Benetol be used? Prepare a solution of one teaspoonful of Benetol and one teaspoonful of salutarin in a pint of warm water (two glasses). (The salutarin is not absolutely necessary but makes the solution better borne by the nasal mucous membranes.) Let every member of the family use this freely as a gargle for the throat and pray for the nose every night and every time anyone comes home from town or from play. For the nose this solution is best used in an atomizer. If nosecup is employed or sniffing from the hand, it may prove a little strong, in which case use half the quantity of Benetol. This solution keeps well for one week.

To thoroughly and effectively sterilize the teeth and remove particles of food on which the bacteria might develop, use part of this solution as a mouth wash and with it Benetol Tooth Cream. This Tooth Cream is itself a powerful yet harmless antiseptic, disinfectant and prophylactic. (Physicians and dentists please note.) Benetol Tooth Cream cleanses and disinfects the teeth, destroying all germs which might lurk therein. This cream is alkaline, and I guarantee that it contains no harsh grit nor any other substance injurious to the teeth.

One of our Minneapolis physicians has personally gone to several barber shops and hotels instructing them how to use Benetol.

Of course, in any developed case you will call in your regular physician to combat the fever, regulate the bowels, etc. (Signed) H. C. CAREL, Originator of Benetol; Formerly Head of Dept. of Medical Chemistry in a Well-Known University; Director of Laboratories, The Benetol Company, Minneapolis.

Already letters and reports are coming in from physicians on the power of Benetol against the Spanish Influenza. For example, from Massachusetts, where the epidemic rages fiercely, a physician writes as follows:

"I have had scores of cases of Influenza and pneumonia and not lost a case yet. I use Benetol in every case as a preventive for the family and as a remedy for those afflicted. I use it myself both before and after visiting each case." (Name of physician to any other physician on request.)

This month a great military school with thirty odd developed cases wired for two gross Benetol. Every cadet was instructed to use Benetol every day, and thereafter not a single new case developed. Within three days from receipt of the wire by us a notice came that the epidemic was checked and at the present writing—four days later—only one boy is as yet seriously ill. His was an early case before the Benetol was used. (Name of school on request by schools or physicians.)

Protect your home and children with Benetol and banish fear. Gargle the throat and spray the nose every night and morning and whenever anyone comes into the home from town or play. Use the powerful yet harmless antiseptic and prophylactic Benetol Tooth Cream to root out germs from the teeth. This cream is alkaline and contains no grit, but is of great germ-destroying power. Purchase your supply from any druggist.

## The Benetol Company Minneapolis, Minn.

### If You Can't Come Down Town Phone Your Want Ads to THE OREGONIAN

Main 7070 A 6095

## National Party Selects Candidates

## VOTERS:—

## What Is Your Ballot Worth?

HOW MUCH IS YOUR VOTE WORTH TO YOURSELF, TO YOUR FAMILY, TO YOUR COUNTRY, AND TO THE VICTIMS OF EXPLOITATION? HOW MUCH IS YOUR VOTE WORTH TO THE EXPLOITING INTERESTS OF THE UNITED STATES?

To some, the ballot is a mere scrap of paper; to others, it is a thing unclean, to touch which is to besmirch oneself; to still others, it is a mere burden; to the light-minded, it is a toy or a plaything—like a rattle, a card, or a football; to the pessimist, it is a delusion and a snare—a pawn on the chessboard of selfish politicians; to the direct-actonist, it is an instrument of oppression and exploitation, and so many, it is a means of ancestor worship.

Strange to say, a few people value the ballot as their political birthright—the most precious of their earthly possessions. The American ballot is the high-water mark of human evolution. In its Revolutionary forefathers bequeathed to us an instrument forged in the furnace of the human sacrifice and suffering of the ages, tempered in the blood of soldiers and the martyrs of the ages, and shaped by the accumulated experience and wisdom of the ages. The American flag is the symbol of our freedom; the American ballot is realization of our freedom. It is a disgraceful act to drag the American flag in the dust. How much worse to besmirch the American ballot in the mire of partisanship and selfishness!

The American ballot, rightly used, is a weapon that will overthrow any wrong, however deeply entrenched, and defend our rights against any attack, however powerful—at least until the sovereignty of our Government is attacked, when we must resort to force of arms. But instead of charging our artillery with high explosives, we have too often used bird shot or blank cartridges, and too often we have turned it against our friends instead of against our exploiters.

THE MEASURE OF THE MANHOOD OR THE WOMANHOOD OF AMERICAN CITIZENS IS THE SERIOUSNESS WITH WHICH THEY ACCEPT THE RESPONSIBILITY OF THE BALLOT, THE INTELLIGENCE WITH WHICH THEY MARK THEIR BALLOTS, AND THE PURPOSE WITH WHICH THEY SELECT THEIR CANDIDATES. THE HIGHEST TYPE IS THE CITIZEN WHO DEFILES ORGANIZED GREED IN THE INTERESTS OF THE VICTIMS OF EXPLOITATION.

In accord with the foregoing principles, the National Party of Oregon presents the following candidates for your consideration:

- NATIONAL**
- For United States Senator in Congress, for Term Beginning March 4, 1919. VOTE FOR ONE
- 14 McNARY, CHAS. L., of Marion County Republican
  - 15 SLAUGHTER, ALBERT, of Marion County Socialist
  - 16 x WEST, OSWALD, of Multnomah County Democratic-Pro.
- For Representative in Congress Third District—Multnomah County. VOTE FOR ONE
- 17 x LAFFERTY, A. W., Independent-National Party
  - 18 McARTHUR, C. N., of Multnomah County Republican
  - 19 SMITH, JOHN S., of Multnomah County Democratic
  - 20 WICKS, H. M., of Multnomah County Socialist

- STATE**
- For Governor. VOTE FOR ONE
- 21 x PIERCE, WALTER M., of Union County Democratic
  - 22 RAMP, B. F., of Marion County Socialist
  - 23 WITHYCOMBE, JAMES, of Marion County Republican
- For Justice of the Supreme Court, to Fill Vacancy Caused by the Death of Justice Frank A. Moore. VOTE FOR ONE
- x John S. Coke (Write in this name and X)

- COUNTY**
- For Representative, 18th Representative District—Multnomah County. VOTE FOR TWELVE
- 51 COPPEY, JNO. B. Republican-Democratic
  - 52 GORDON, HERBERT Republican-Prohibition
  - 53 HORNE, OSCAR W. Republican-Democratic-National
  - 54 HOSFORD, O. W. Republican
  - 55 IDLEMAN, H. L. Republican-Prohibition
  - 56 KUBLI, K. K. Republican
  - 57 LEWIS, D. C. Republican-Democratic
  - 58 McFARLAND, E. C. Republican
  - 59 MOORE, CHESTER C. Republican
  - 60 RICHARDS, OREN R. Republican
  - 61 RICHARDSON, JOSEPH G. Republican

- 62 x SMITH, EUGENE E. Rep.-Dem.-Prohi.-National
- 63 McNAUGHT, ALICE M. Democratic
- 64 MILLER, ROBERT A. Democratic-Prohibition
- 65 TREECE, W. H. Democratic
- 66 WILLISON, RALPH A. Democratic

- 67 x AMOS, WM. F. Prohibition-National
- 68 x HART, JOSEPH K. Prohibition-National
- 69 HIDDEN, MARIA L. T. Prohibition
- 70 x NEWELL, J. P. Prohibition-National
- 71 x UNRUH, ADA WALLACE Prohibition-National
- 72 x WOLD, EMMA National

- OUR CANDIDATES**
- United States Senator—OSWALD WEST (Indorsed without his knowledge) "The man of the hour" for Oregon. If manhood and ability are above partisanship, vote for West.
- Representative in Congress—A. W. LAFFERTY (Unofficially indorsed) Who served two terms in Congress and came home poor. "Never give up the fight" is his motto. Your only chance to defeat McArthur this time is to vote for Lafferty. A vote for Smith is a vote for McArthur. Figure it out.
- Governor of Oregon—WALTER M. PIERCE (Unofficially indorsed) Six years against weakness. Vigor against senility. Statesmanship against partisanship. Pierce against Withycombe.
- State Legislature—JOS. K. HART (Nominated) A man of deep thought and inspiring personality, who places principle above policy.
- State Legislature—WM. F. AMOS (Nominated) Mr. Amos is a successful physician and leader in practical life. We need some doctors in the Legislature. Vote for him.
- State Legislature—EMMA WOLD (Nominated) An educator of the highest order. Worthy of your suffrage. If you knew Miss Wold you would vote for her.
- State Legislature—EUGENE E. SMITH (Nominated) You will notice that this Mr. Smith has the confidence of all political parties, except the Socialists. He will be elected and will represent us also in the Legislature.
- State Legislature—ADAH W. UNRUH (Nominated) A talented speaker and writer, who would be an honor to the state in the Legislature. Men say that women are prejudiced against their sex. Nail this lie at the polls.
- State Legislature—J. P. NEWELL (Nominated) Civil engineer and well-known citizen, of the quiet, level-headed type. Foremost in reforms in Oregon for many years. Elect him.

DO YOU BELIEVE THAT THIS NATION CAN PERMANENTLY REMAIN INDUSTRIALLY AUTOCRATIC AND POLITICALLY DEMOCRATIC? THE NATIONAL PARTY BELIEVES IN MAKING THIS NATION INDUSTRIALLY DEMOCRATIC. IT OPENS THE DOOR FOR ALL LIBERAL AND PROGRESSIVE GROUPS TO UTTER IN ONE NATION-WIDE PARTY AGAINST THE OLD SYSTEM OF PROFITEERING AND CORRUPTION.

**NATIONAL PARTY STATE EXECUTIVE COMMITTEE.** 412 Merchants Trust Building, Portland. Platform mailed free. Phone Main 998. (Paid Adv. by National Party of Oregon; Geo. L. Cleaver, Chairman, 408 Merchants Trust Bldg.)