

WELL-KNOWN PORTLAND PRINTER AND HIS NEW JORDAN SUBURBAN SEVEN.

SEPTEMBER 5, 6, 7
TRACTOR SHOW

Big Event to Be Held on 250-Acre Tract on Cotton and Ruegg Ranches.

EUGENE SMITH MANAGER

California Man, Who Put on Successful Tractor Show at Davis, Cal., to Handle Coming Northwest Event at Portland.

Preliminary arrangements are rapidly being completed for the big tractor show to be held by Portland farm implement and tractor dealers here next month.

The show will be held on Thursday, Friday and Saturday, September 5, 6 and 7, under the auspices of the Portland Implement and Tractor Association. The official name of the show will be the Northwest Tractor and Implement show.

It is to be the largest show of its kind ever held in the Northwest. Already entries have been made of 25 different makes of tractors, and before the entry lists close on August 15 it is the expectation that 30 or more tractors will be represented.

A tract comprising nearly 250 acres as been obtained for the show on the Cotton and Ruegg ranches, near Linsemann Junction, on the Oregon Water Power division of the Portland Railway, Light & Power Company, a short distance beyond Lents. This site is very accessible, for the Graham cars of the Portland Railway, Light & Power Company pass on one side of it, while on the other side is the Powell alley road, giving a paved highway all the way into the city.

Demonstrations Big Feature.

Ample space for demonstration purposes is provided in the tract selected. A demonstration of one of the main features of the show. There will be no exhibition building for the tractors, but each individual tractor entered will be housed in a tent to be erected by the exhibitor. The tractors will be placed at one end of long tracks, marked out by furrows, which will belong to the individual tractors for demonstration purposes during the three days of the show.

Private demonstrations of the tractors will be held from 9 o'clock until 12 noon. From 1:30 until 3:30 p.m. will be devoted to a public demonstration of all tractors. The time after that will be devoted to private demonstrations, special tests and the like, as the exhibitor may desire. Eugene Smith, of San Francisco, a tractor man of wide experience, has been selected manager of the coming show by the Portland Implement and Tractor Association. Mr. Smith is now in Portland, with headquarters at the Mitchell, Lewis & Staver Company, 346 East Morrison street. Mr. Smith was manager of the recent tractor show in Davis, Cal., one of the most successful events of its kind ever held. The total attendance at this show, which had a much smaller history to draw upon than the Portland show will have, was 46,000. Mr. Smith said yesterday that he fully expects the attendance at the three days of the show here to total 75,000 persons.

Special Rail Rates Sought.

He is now taking up with Federal rail chiefs in this territory a plan to grant special round trip rates from points throughout the Pacific Northwest to Portland for the show, so that farmers and ranchers, and others interested in tractors and farm implements, may attend.

The coming tractor show will be the largest event of its kind ever held in the Pacific Northwest," said Mr. Smith. He expects that fully 30 different makes of tractors will be represented, and perhaps more.

"I am much gratified at the great interest being taken in the coming show, though the decision to hold it so recent. We are receiving letters of inquiry every day from all parts of the Northwest asking about what tractors will be shown, and what arrangements can be made for special rail rates for visitors.

The present is a time when every available acre that can be tilled should be put into cultivation to increase the food production of the country. The farm tractor is making possible a vastly increased acreage, and that with less man power, and as such it has the very warm approval of the Government. "All tractor shows which tend to increase interest in farm tractors, and thus directly to work for increased food production, are particularly desired by the Government.

The tractor industry is just in its beginning. Only the more advanced tractors as yet have added the tractor equipment. One of the purposes of the coming show will be to demonstrate to the farmer how greatly the tractor will add to farm efficiency."

H. W. Mitchell, Lewis & Staver Company, is president of the Portland Implement and Tractor Association; W. E. Wilson is vice-president and W. O. Munell, secretary-treasurer.

BEAR CATS SELL FAST HERE

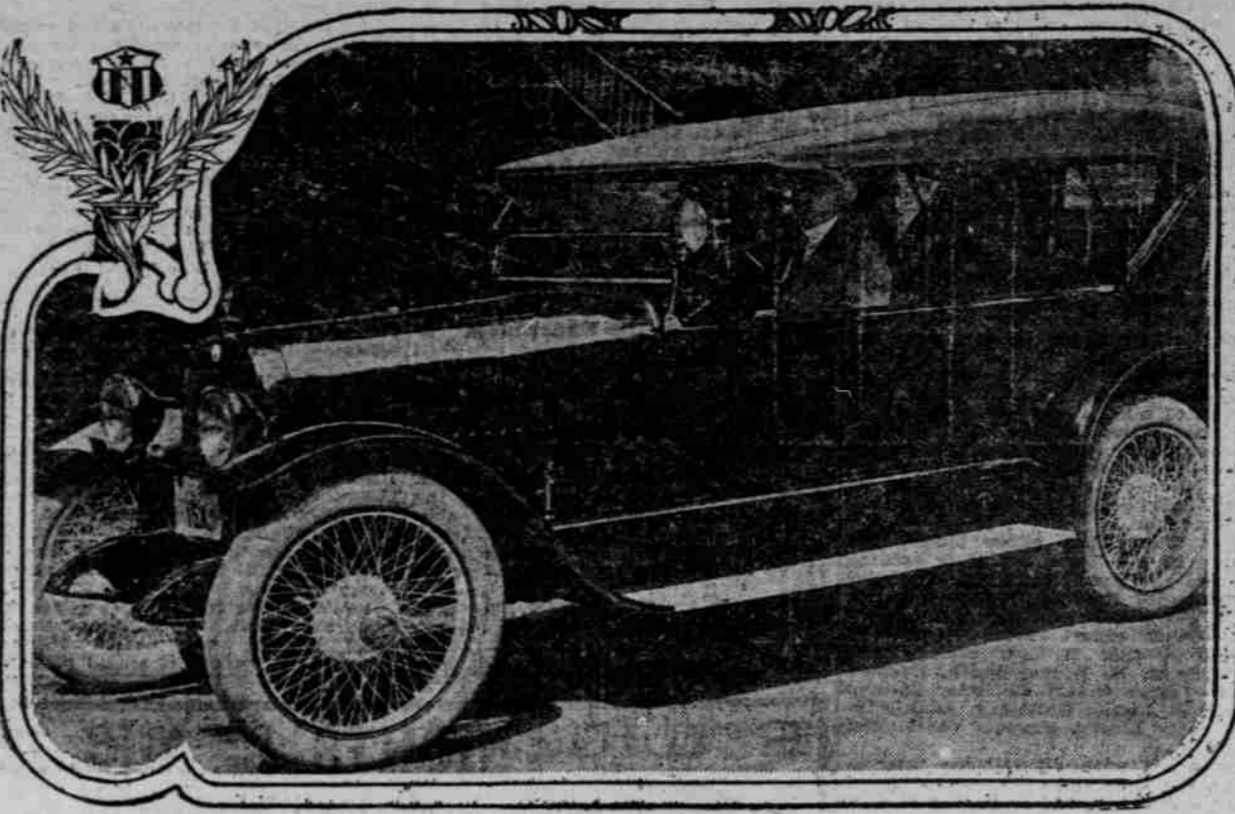
Portland Gaining Reputation for High-Class Cars.

Though he has been Stutz distributor here only a few months, C. D. McPhail, of the Auto Rest Garage, looks over the business he has handled in that time with a lot of satisfaction. He is especially pleased with the fact that he has not only sold all the Stutz cars that he could obtain from the factory, but that the demand for more of them is so great that he has advance orders for several cars to be delivered when they arrive.

The Stutz "bear cat" model is proving especially popular. Mr. McPhail has been informed that a couple of carloads of this popular model are on the way from the factory and should be here in a few days. The Stutz also comes in a five-passenger which is much in demand.

"When I first took the Stutz line, I was informed by a lot of persons that never could 'put it over here,' because Portland was not a high-class car town," said Mr. McPhail. The results show that the demand for more of these cars now on the streets show pretty conclusively that all that was needed was for the public to become acquainted with the merits of that high-class car."

Cliff Durant's new Chevrolet racing creation will receive its speed baptism at Tacoma on July 4, and Chevrolet and other engineers are eagerly awaiting the verdict. The car is said to be good for 120 miles an hour and was constructed along Chevrolet designs in the big factory at Oakland. Mayor Davis, of that city, was to have christened the machine, but the Tacoma speedway management requested its shipment north before the ceremony could be staged.



At the Wheel is H. C. Browne, Publisher of the Rural Spirit, Who Bought This Jordan Suburban Seven Last Week From the Mitchell, Lewis & Staver Company.

WOMEN TRAVEL FAR

Boston Girls Circling Country in Overland Roadster.

DATA ON ROADS OBTAINED

Miss Florence M. Pettee and Miss Mabel L. Bishop Writing Interesting Experiences on Tour for Motor Life Magazine.

When Miss Florence M. Pettee and Miss Mabel L. Bishop get back to Boston, Mass., which, if all goes well, should be in another three months, they will have a pretty good general knowledge of road conditions in the United States. Also, they will think a little of the things as changing a tire on the road, knee deep in mud, of locating a short in the electric system without the aid of any mechanic, and like emergency repair work.

They have done all these things, and many more, in the course of an automobile tour from Boston to Portland, in which they started three months ago. They have not been trying to set any new road records, or anything of that sort, but are out to see what the great United States, which they had heard so much of, are like. They are finding out and having a fine time in the process.

Miss Pettee and Miss Bishop are traveling in an Overland roadster, model 99. They and their car have been through some hard experiences together in the course of their long tour. The car has been failed many times, but they are enthusiastic boosters for the Overland, and particularly for their handy little model 99 car.

Chicken Wire for Mud.

Just as an example of the kind of traveling they have experienced at times, when they went through Illinois it was raining so hard that most of the roads were bogs or marshes. They passed many a car that was stuck in the mud, but they and their Overland went through all the mud in sight, though at times they were in mud up to the hubs of the wheels.

Touring like this on their own resources, with no man around to take the responsibility, has made them very resourceful. Miss Pettee has a device of her own invention, which is patented, for getting through mud holes or over sand where the wheels are unable to obtain traction. This device is just plain chicken wire. It is the best thing in the world for mud troubles, says Miss Pettee. The chicken wire, placed under the rear wheels, quickly gives them traction and enables them to pull out of almost any kind of mud or sand.

While Miss Pettee and Miss Bishop are traveling to see the country, they are also making the trip as a special tour for Motor Life, the motoring magazine published by the Automobile Blue Book Company. Recent issues of Motor Life contain interesting articles from them on the progress of their trip, their experiences and the roads they have traveled.

To Visit Overland Factory. When they return to Boston they expect to have circled the United States and to have taken side trips to such points of interest as Yellowstone National Park, Yosemite National Park and our own Crater Lake National Park. They visited Crater Lake on their way north from San Francisco, and declare with enthusiasm that it is one of the most beautiful places they have seen on the whole tour.

The trip west the two young women and their Overland have made over the

ARMY PICKS TRUCKS

White and G. M. C. Light Models Are Chosen.

SEVEREST TESTS GIVEN

Even Catch Fish.

While they are not camping out, as a rule, on their trip, but stopping at hotels en route, Miss Pettee and Miss Bishop are fully equipped for camping in the open, and have done so several nights on their tour. They even have fishing tackle, and, what is more, they know how to use it.

They have an automobile tent of their own design, which they pack in a small bag; a complete camping outfit, including a small stove, "grub" and a "duffle bag," in which are stowed their sweaters and clothes. All this equipment they stow under the deck of the roadster behind the seat. To see the car one would never suppose they are on a tour of the United States, for all this equipment is hidden under the deck, and by having the car washed at the principal cities it looks almost like new despite the hard usage to which it has been subjected.

The two young women reached Portland from California, having stopped at Crater Lake en route, early last week. They left Portland for Seattle Friday over the Pacific Highway.

OAKLAND ECONOMY CAR

SENSIBLE SIX IN BIG DEMAND IN AUSTRALIA.

Call for Oakland Cars on Island Continent is Larger Than Distributor Can Supply.

There are countries other than the United States where the automobile has proved itself an essential and indispensable factor in the national transportation system.

In the island continent of Australia, for example, thousands of the inhabitants place a greater dependence on the automobile than do the motorists of the United States. The railroads have developed slowly in Australia, and in many sections of the island the automobile is the only means of speedy travel.

"Without motor cars our country's activities would stagnate, so necessary have they become in our system of transportation," writes Howard Natrass, governing director of the Natrass & Harris Motor Company, of Wellington, New Zealand, who made a trip half-way around the world this Spring to obtain American automobiles for relieving the wartime car famine.

"For the past three years, due to the increasing demands for economy and the shortage of gasoline, we have adopted the Oakland as the car which meets wartime needs better than any other. Our experience has proved to us that the Oakland is the best all-round car on account of its light weight, its general economical features and its moderate price.

"That our choice was a wise one is shown by the enormous demand for this car on the part of New Zealanders, who were quick to recognize its economy and unusual value. In fact, we created a demand for the Oakland that we were unable to supply, due to the unusual shipping conditions."

At present there is such a scarcity of automobiles in all parts of Australia that dealers are flooded with orders that will require months to fill, and used cars are commanding almost fabulous prices.

BOSTON GIRLS TRAVEL FAR IN OVERLAND ROADSTER.



Miss Florence M. Pettee (at wheel) and Miss Mabel L. Bishop, and Roadster in Which They Arrived in Portland Last Week. Three Months Out from Boston, They Are Writing Their Experiences for Motor Life Magazine. Under the Rear Deck Are Stowed Two Suitcases, Two Suit Boxes, One Typewriter, a Tent, Blankets, Touring Coat, Typewriter Paper, Manuscript File and a Complete Automobile Blue Book Touring Library.

work, commercial trucks could not stand up under the strain."

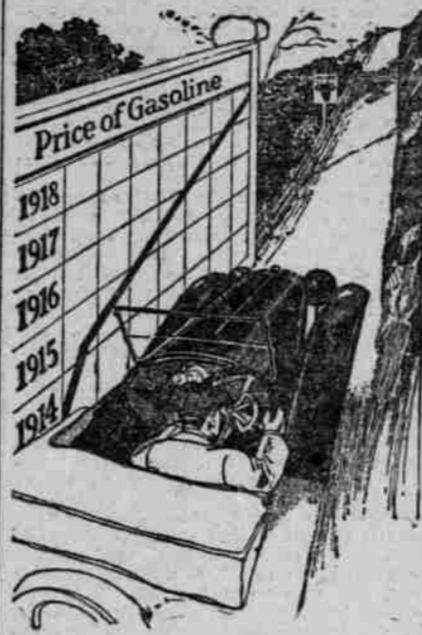
BAKER CLUB AIDS TOURISTS

Camping Site and Signs on County Roads Are Among Improvements.

BAKER, Or., Aug. 10.—(Special.)—The Baker Commercial Club is making two improvements here for the benefit of auto tourists who pass through Baker. One is the improvement of the ground given by the city for a camping site for tourists who stop here for the night, where city water will be installed and fuel provided and other arrangements made for the comfort and convenience of visitors.

The other is the establishment of sign posts on the county roads, directing motorists to the various parts of the county they may wish to visit. At present only the through highway, following the old Oregon Trail, is so marked.

Look out for children dodging from behind a trolley car which is standing and which came from the opposite direction.



Takes the Rise Out of Hills and Bills

The greatest factor in raising your gasoline bills, and lowering your motive power, is leaky piston rings. These result in pitted valves, sooty plugs, heavy carbonization, and wasted energy, which means wasted gasoline. To save gasoline and increase your motor efficiency, you need gas-tight piston rings.

More Than 2,000,000 in Use. More than two million Inlands are saving money and increasing engine efficiency for motorists all over the world. That's "the proof of the pudding."

INLAND 1-Piece Piston Ring

There is just one perfect piston ring—the Inland. Gas cannot escape around an Inland ring, because it expands in a perfect circle, forming complete contact around the cylinder wall. Gas cannot escape through an Inland ring, because its spiral cut (a patented feature) leaves no gap. Being of equal width and thickness all around, it is the strongest and most durable piston ring on the market. And with all these advantages, it is low priced, costing \$5 to \$10 per set less than any other type of gas-tight ring.

Railroad rates are high, traffic is congested, travel is difficult. USE YOUR CAR.

See your garage man today. Have him give your engine the "once over," and ask him how little it will cost to make it gas-tight with Inlands.

There's an Exide Battery For Every Car. THE STORAGE BATTERY CO. 348-350 Couch St.

7500 MILES GUARANTEED ON FORD SIZES. Perfection Asbestos Tires. No Loose Treads. No Sand Blisters. Tubes Kept Cool by Asbestos Fabric Protection.

Dealers: The Inland is a money-maker for you because it is a money-saver for the car owner. We carry a complete stock of Inlands—get in touch with us.

Ballou & Wright 80-82 Broadway Portland, Oregon 1515 12th Ave., Seattle, Wash.

Immediate Delivery for the first time within 60 days on Chandler Cars

Twin States Motor Car Co.

514 Alder St. Phone Broadway 494

AUTO DIRECTORY

CHANDLER TWIN STATES MOTOR CAR CO. SAGON 514-516 Alder St., at Sixteenth. Phone Broadway 494

Franklin International Motor Truck A Truck for Every Purpose. Main 4880, A 3881. 19th and Washington Sts.

Lexington MINUTE MAN SIX Brunn Motor Car Co. 444-46 Stark St. Phones: Broadway 2958, A 2958

MACK Trucks MACK Trucks COMPLETE STOCK REPAIR PARTS. F. C. ATWELL, Sales Agent. Washington at 21st. Tel. Mar. 440

Mitchell SIXES New Light Six, \$1250 Factory Mitchell, Seven-Passenger, \$1525, Factory MITCHELL, LEWIS & STAVER CO. Broadway at Oak

Oldsmobile Distinctive High Grade, Light Weight. OLDSMOBILE CO. OF OREGON Broadway and Couch Phone Broadway 2270

Peerless is ready to serve your requirements with success. Touring \$2550, f.o.b. factory. Roadster \$2350. D. C. Warren Motor Car Co. 68-80 N. 234 St. MAIN 780.

Republic Motor Trucks EIGHT CAPACITIES TO 5 TONS Investigate Our Tractor and Trailer Proposition. ROBERTS MOTOR CAR CO., Inc. Park at Everett St.

AUTO ACCESSORIES AND PARTS

ARCHER & WIGGINS Distributors of High-Grade Automobile Accessories. SIXTH STREET AT OAK

WE ARE GOODRICH TIRE DEALERS. Up-to-the-Minute Touring Information Free. Call Main 3237. 209 TENTH STREET

AUTO REST GARAGE GASOLINE and OIL TANKS STORAGE SYSTEMS FOR PUBLIC and PRIVATE GARAGES. 9. D. Stoddard, District Mgr. Salem, 719-20 Corbett Bldg. Main 1476.

BOWSER BATTERY CO. The only battery with a definite guarantee. All makes of batteries charged and repaired. Broadway and Glisan Phone Bdwy. 546

David Hodes Co. AUTOMOBILE GEARS, PARTS AND ACCESSORIES AT REDUCED PRICES. ENGINES A SPECIALTY. N. Broadway and Flanders.

Miller AD-ON-A-TREADS YOUR WORN TIRES MADE LIKE NEW WITH MILLER AD-ON-A-TREADS. GUARANTEED 3500 MILES. AT HALF THE COST OF NEW ONES. STRETCHLESS INSIDE TIRE CO. Opposite New Postoffice. 124 North Broadway.

There's an Exide Battery For Every Car. THE STORAGE BATTERY CO. 348-350 Couch St.

7500 MILES GUARANTEED ON FORD SIZES. Perfection Asbestos Tires. No Loose Treads. No Sand Blisters. Tubes Kept Cool by Asbestos Fabric Protection.

Dealers: The Inland is a money-maker for you because it is a money-saver for the car owner. We carry a complete stock of Inlands—get in touch with us.

Ballou & Wright 80-82 Broadway Portland, Oregon 1515 12th Ave., Seattle, Wash.

7500 MILES GUARANTEED ON FORD SIZES. Perfection Asbestos Tires. No Loose Treads. No Sand Blisters. Tubes Kept Cool by Asbestos Fabric Protection.

Dealers: The Inland is a money-maker for you because it is a money-saver for the car owner. We carry a complete stock of Inlands—get in touch with us.

Ballou & Wright 80-82 Broadway Portland, Oregon 1515 12th Ave., Seattle, Wash.

PHONE YOUR WANT ADS TO THE OREGONIAN. MAIN 7070. A 6095.