

SHIPYARDS TEAMS
BATTLE FOR TITLEFoundation and Grant Smith-
Porter to Cross Bats on
St. Johns Field.

DOUBLE-HEADER ON TAPIS

"Lefty" James and Barham Likely
to Be Pitted in Opener—Penin-
sula to Meet Supple-Ballin
at Vaughn-Street Park.Shipbuilders' League Standings.
W. L. Pot. W. L. Pot.
Found'n... 7 1 875 Stanfer-C. 4 2 444
Smith-P... 7 1 875 Supple-B. 4 2 250
McCormick 7 1 700 Peninsula 1 7 125
Cornfoot 7 1 700 Columbia 0 8 000Where the Teams Play Today.
At Vaughn street: Doubleheader, Penin-
sula vs. Supple-Ballin; Portland Buckaroos
vs. Winner.
At St. Johns: Championship doublehead-
er, Grant Smith-Porter vs. Foundation.
At Vancouver: Cornfoot vs. Standifer-
Clarkson; Emergency Fleet Corporation vs.
Standifer-Clarkson.
At St. Helens: McCormick vs. Columbia
River.This afternoon the Foundation base-
ball club will fight it out for the
championship of the first half of the Col-
umbia-Willamette Shipbuilders' League
season with Grant Smith-Porter at the
St. Johns ball park. The two teams
will play a double-header for the title,
the first contest starting at 1:30 P. M.
As it now stands both Foundation and
Smith-Porter have won seven games
and lost only one. The teams have
been practicing hard all week, and are
in the best of condition for the fight
for supremacy. The two aggregations
have not met this season, their regular
scheduled game hitting a rainy Sunday
last month, resulting in a postponement
until today.The managers of the teams look for
well over 2500 fans to be on hand to
take in today's championship double-
header.James Slated to Pitch.
"Lefty" James, who has won seven
out of the eight games that he has
worked in, will twirl one of the games
for Foundation, while Al Twifell,
"Rube" Evans or "Doc" Melkie will
put 'em over in the second contest.
The only game that James has lost this
year was the fateful 12-inning affair
with McCormick in St. Helens some
weeks ago. James weakened in the
first few innings, allowing McCormick
to get ahead and finally win out in
the 12th inning. That was the only
game the Foundation has lost the first
half of the season.Eddie Yates has his Grant Smith-
Porter ballplayers in good condition for
the test today. Yates, who is manager
and batting coach, has been making
Barham pitch some of the best ball
seen in the league this year and
Manager Yates is certain that he will
deliver today.Two other double-headers in a sense
of the word are scheduled in the Ship-
builders' League today. Out at the
Vaughn-street park Peninsula and Supple-
Ballin will get together for a thrille-
r, the winner getting a crack at the
Portland Buckaroos in the other game.
"Buck" Keith has three pitchers avail-
able now in "Rube" Maxmeyer, Sid
Williams and La Cloutier. The latter
has been playing with Spokane since
the time the team quit and is said to
be a good moundman. Bill Kirwin,
who started out with the Bucks this
season, will work in the second game.
Peninsula and Supple-Ballin, former
manager of the Spokane Indians, will
play first base for Peninsula. There are
four other games scheduled in the
Peninsula lineup now and all of
them will play against Portland if
Peninsula wins the game against Supple-
Ballin.Exhibition Game Scheduled.
As the Cornfoot and Standifer-Clark-
son clubs in the Shipbuilders' League
have no regular scheduled games for
today, they will stage an exhibition
game in Vancouver. Standifer-Clarkson
and Fillet, the two leading twirlers of the
Northwestern League last year, and
both teammates on the Tacoma club,
will, no doubt, be on hand to pitch.
Sutherland is now the star
pitcher for Cornfoot, while Fillet
joined the Standifer team last week.Promptly at 1:15 P. M. the United
States Shipping Board Emergency
Fleet Corporation team, of which Lloyd
Wentworth, district supervisor, is cap-
tain, will play the Standifer-Clarkson
force aggregation in a preliminary
game. Lloyd Wentworth, Guy M.
Standifer, T. J. Standifer and J. F.
Clarkson will all be seen in the United
States game. The game was to have been played
last Sunday, but was called off on ac-
count of the death of Colonel Standifer.
The other game scheduled in the
Shipbuilders' circuit will be fought out
in St. Helens, where the Columbia
River Company team will cross bats
with the McCormick outfit.
The second half of the Columbia-
Willamette Shipbuilders' League will
get under way next Sunday, June 16.

BASEBALL GAME TODAY

COLUMBIA BEACH THROGGED WITH
RECREATION SEEKERS.Miniature Railway Is Nearing Comple-
tion and Will Be in Operation
Within a Few Days.Warm weather has attracted thou-
sands in the past week to Columbia
Beach, and the promenade, dance pa-
villion, bathing facilities in the Colum-
bia River, Shetland ponies and nume-
rous other attractions have been well
patronized.
The engagement of Philip Pels and
his orchestra has been one of the no-
table events at Columbia Beach, for
following the regular evening concert
commencing at 7 o'clock, the orchestra
is heard in the dance hall. There
is an additional concert Sunday after-
noons at 2 o'clock.Hundreds of soldiers have visited the
resort, the manager having turned
open the gates for all men in uniform
except on Sundays and holidays. Fifteen-
minute service by the electric cars
is augmented by many autos that make
the trip daily. The lower road has
been open all season and it will be but
a few days before the new Bridgeton
road will be opened, giving motorists a
short and smooth cut to the beach
from the Interstate bridge.For the coming week there will be
new novelties and within a brief time
the miniature railway, taking patrons
around the entire grounds, will be in
operation. Among the features for to-
day will be a baseball game between
the Hibernian and the Journal teams of
the Inter-City League on the beach dia-
mond. The game will start promptly
at 2:30.The German word for war tank is
"Sturmpanzerkraftwagen."SOME OF THE STAR BATTERIES AND PLAYERS IN COLUMBIA-WILLAMETTE SHIPBUILDERS' LEAGUE WHO WILL STEP IN ACTION ON SHIPBUILDERS' DIAMONDS
TODAY, AND A CHAMPION TUG-OF-WAR TEAM.

TRACK GAME KILLED

War Makes Serious Inroads
on Outdoor Sports.

AGGIES ALONE SHOW PEP

Only Meet of Year Open to Colleges
and High Schools, Military Con-
tests, Not Success Finan-
cially or Otherwise.The consolation track meet, held
last Friday at Reed College campus,
marked the closing of the field events
for the year as far as school competi-
tion is concerned. War has hit track
harder than any other amateur sport.
Usually there are three or four meets,
at least, in which the students from
the colleges and high schools are given
a chance to compete, but this year
there was only one, the military
track and field meet, and it wasn't
very successful, from either the finan-
cial point of view or by the showing
the men made.Oregon Agricultural College seems to
be the only school that had a little
chance at the Columbia University
fields of France left enough men at
the "orange" school to have a track
meet that looked half way decent, but
the enrollment of so many of its men
in the military service and by the
illness of Coach Hayward, who was laid
up in a Portland hospital a considerable
length of time.Multnomah Without Team.
Usually there are at least two meets
held in Portland, one on the Multnomah
Club campus and the other the indoor
track meet annually for the past
12 years at the Columbia University
gymnasium. In the days of Walter
Hummel, Sam Bellah, Ad Dewey and
others, the Winged M had one of the
most powerful track teams on the
Coast, and was able to put up a
great fight with the greatest teams
of the Northwest. This year, however,
Hummel is in the service, while most
of the others are on the retired list.The poor financial showing of the
annual indoor meet off. Multnomah
did not help matters, as the board of
education at the prep school a great deal
of worrying and they decided to take
no chances on the outcome and called
the annual indoor meet off. Multnomah
did the same, so there was no meet
in Portland where the colleges could
compete.War hit athletics at the University
of Washington so hard that they prac-
tically decided to do away with track
there. Washington always had a good
team, but almost all of her stars are
now in some military branch.

High Schools Hit by War.

Even the high schools suffered by
the loss of so many star track men.
Last year Washington High had a
powerful team. Charley Parsons, Puss
Graves, Earl Johnson and a host of
others are now in the infantry and the
aviation service.
Jefferson High School seems to be
the only school that has not suffered
to a great extent by enlistments. The
Democrats had one of the greatest all-
around teams this Spring that any
school ever had. They had a team that
could make a creditable showing
in competition with any school in the
country, but Coach Quigley had no
place to take his men. There was no
Eugene meet this year and no Colum-
bia meet. They were barred from com-
petition at the Reed College consola-
tion meet, and Coach Quigley's great
team had only one chance to show its
real worth.Some of the Eastern Oregon schools
had no teams at all, as they had no
place to send their men, so, as a whole,
this year was a dismal failure for all
track teams in the Northwest at least.Portland Motorboat Club
Notes.

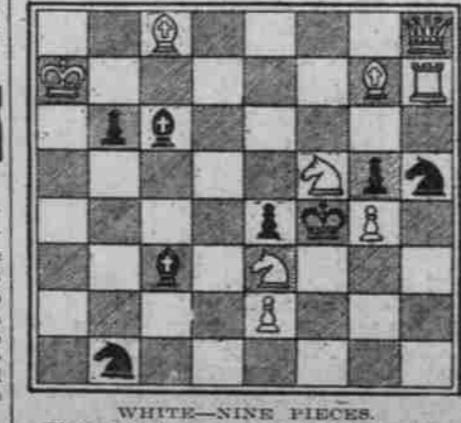
BY CASEY.

COMMODORE BOOST kept his prom-
ise and made the cruise a cracker-
jack. His flagship, the Arisan, left the
club loaded to the guards with friends
and new members of the club, who do
not own boats, and was the first to
arrive at the park. By the time the
other boats began to arrive the com-
modore had the park in shape to pull
off the stunt. Some stunts were
pulled, believe me.Of all the stunts, the ladies' sail-
driving contest was the most enjoyedby the spectators. Several of the con-
testants are wearing gauze and band-
ages this week instead of gloves.In the male tug-of-war Frank Vogler's
team couldn't budge Commodore
Boost's team, because the end of the
rope was tied around a tree.The trim little runabout Gaygo gave
a speed exhibition off the park.The Bashful Boy carried a couple of
young ladies aboard.Ernie von der Werth's Naughty Girl
passed by the park, but didn't stop.A pretty race between the Bashful
Boy and Gaygo was interrupted when
the Bashful Boy ran in behind Hog
Island while the Naughty Girl
passed by.The Sylph, with Captain Mrs. Kendall
at the wheel, came in with a party late
in the afternoon. It was a pleasing
sight to see the Sylph "doing 30" com-
ing up the river.The Gee-whiz, Captain Ray Jamison,
accompanied by a couple of friends,
tried out his new engine on the way up
to the park and it worked fine. On
the return trip, owing to a loose con-
nection, the cam shaft smashed the
crank case. Ray is sayin' things about
the fellow who put it in.During the cruise there were several
races between some of the fast boats.
Ray Jamison tried to beat the Sylph,
but Gee-whiz couldn't do it.Captain Jim Smith is as proud as a
peacock of the Kenosia, which has a
new engine in her. On the way down
the river he overtook the Sylph while
the latter was taking Orlo's canoe
aboard.

Chess.

E. H. BRYANT, Editor.
Phone Taber 8215.
Contributions solicited. Headquarters
Portland Chess Club, White House
building, Third and Oak streets, room 218.
Send contributions to 143 East Thirty-ninth
street.PROBLEM No. 324.
By W. R. Dalton, Seattle, Wash.
Dedicated to J. N. Hansen by the doctor,
for the brilliant theme introduced in the
design was suggested by problem No. 349.
This and the one following puts life and
sparkle into this department. Every change
in these problems reveals new beauties.
Some of the fans will be trapped with some
of the prettiest tries of any we have pub-
lished; but it is worth your while to treat
thrift stamps is offered to the solver send-
ing in the best analysis to these two prob-
lems. Every effort made to analyze a chess
composition is an education in chess, and a
ment wherein you gain, whether you win the
prize or not. The contest will close July
1, 1918.

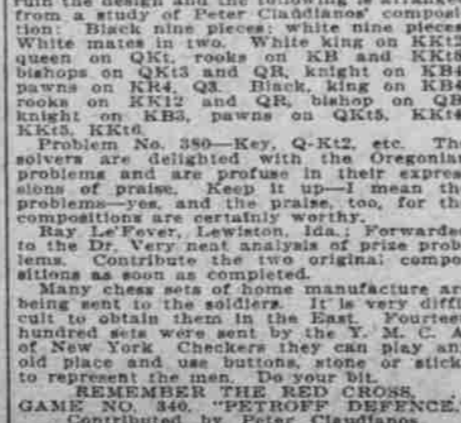
BLACK-EIGHT PIECES.

WHITE-NINE PIECES.
White to play and mate in three moves.
White king on K17, queen on K18, rook
on K17, bishop on K17 and Q18, knights
on K18 and K19, pawns on K14 and K2.Black king on K18, bishop on Q18 and
Q19, knights on K14 and Q18, pawns on
K15, K14, Q18.PROBLEM No. 355.
By Ray LaFever, Lewiston, Ida.
Assisted by Dr. Dalton, who writes us
that Mr. LaFever will be one of the most
successful composers in this country. It is
a very pleasing position and goes
straight to the heart. After getting a grip
on the key to unlock this chess puzzle you
certainly will consider Mr. LaFever's as-
pirations highly commendable and may they
be fully realized in his future work.

BLACK-TEN PIECES.

WHITE-TEN PIECES.
White to play and mate in three moves.
White king on K18, queen on Q14, rook
on Q18 and Q19, knights on K14 and K15,
pawns on K14, K15, K16, K17, K18, K19,
Q14, Q15, Q16, Q17, Q18, Q19.Author unknown. Contributed by Oregon.
This is a very elaborate setting and re-
quires that we cannot diagram it. Take these
three mystifying combinations in homeo-
geneous order and then you will enjoy them.
Black-12 pieces, White-13 pieces. White
to play and mate in three moves. White
king on K18, queen on K18, rook on K18
and Q18, bishop on Q18, knights on K14
and K15, pawns on K14, K15, K16, K17,
K18, K19, Q14, Q15, Q16, Q17, Q18, Q19.PROBLEM No. 341.
"KRB Gambit."
This was a consultation game played at the
Mechanics Institute, Philadelphia, Pa.PROBLEM No. 342.
By W. R. Dalton, Seattle, Wash.
Dedicated to J. N. Hansen by the doctor,
for the brilliant theme introduced in the
design was suggested by problem No. 349.
This and the one following puts life and
sparkle into this department. Every change
in these problems reveals new beauties.
Some of the fans will be trapped with some
of the prettiest tries of any we have pub-
lished; but it is worth your while to treat
thrift stamps is offered to the solver send-
ing in the best analysis to these two prob-
lems. Every effort made to analyze a chess
composition is an education in chess, and a
ment wherein you gain, whether you win the
prize or not. The contest will close July
1, 1918.

BLACK-EIGHT PIECES.

WHITE-NINE PIECES.
White to play and mate in three moves.
White king on K17, queen on K18, rook
on K17, bishop on K17 and Q18, knights
on K18 and K19, pawns on K14 and K2.Manhattan Chess Club, of which he is a
member, in New York City, winning 13
and drawing five. J. B. Capablanca, white. G.
H. Wolfbrecht, black.PROBLEM No. 343.
"KRB Gambit."
This was a consultation game played at the
Mechanics Institute, Philadelphia, Pa.PROBLEM No. 344.
"KRB Gambit."
This was a consultation game played at the
Mechanics Institute, Philadelphia, Pa.PROBLEM No. 345.
"KRB Gambit."
This was a consultation game played at the
Mechanics Institute, Philadelphia, Pa.PROBLEM No. 346.
"KRB Gambit."
This was a consultation game played at the
Mechanics Institute, Philadelphia, Pa.PROBLEM No. 347.
"KRB Gambit."
This was a consultation game played at the
Mechanics Institute, Philadelphia, Pa.PROBLEM No. 348.
"KRB Gambit."
This was a consultation game played at the
Mechanics Institute, Philadelphia, Pa.PROBLEM No. 349.
"KRB Gambit."
This was a consultation game played at the
Mechanics Institute, Philadelphia, Pa.PROBLEM No. 350.
"KRB Gambit."
This was a consultation game played at the
Mechanics Institute, Philadelphia, Pa.PROBLEM No. 351.
"KRB Gambit."
This was a consultation game played at the
Mechanics Institute, Philadelphia, Pa.PROBLEM No. 352.
"KRB Gambit."
This was a consultation game played at the
Mechanics Institute, Philadelphia, Pa.PROBLEM No. 353.
"KRB Gambit."
This was a consultation game played at the
Mechanics Institute, Philadelphia, Pa.PROBLEM No. 354.
"KRB Gambit."
This was a consultation game played at the
Mechanics Institute, Philadelphia, Pa.PROBLEM No. 355.
"KRB Gambit."
This was a consultation game played at the
Mechanics Institute, Philadelphia, Pa.SEATTLE GOLFERS
ARE ALL "HE UP"Sound City Shots Worry Over
Caliber of Men Portland
Will Send North.

BASEBALL FANS GLEEFUL

Washington Metropolis to Be Desert-
ed Village on Night of Bremerton
Boxing Carnival—Frank
Troch Picked to Win.SEATTLE, Wash., June 8.—(Special)
—Seattle golfers are wondering just
what kind of a team Portland will send
up to the big Northwest championships
to be held at the Seattle Golf Club
course during the week of June 17-22.
Officials of the Pacific Northwest Golf
Association have decided that the
coming tournament will be a war-relief
affair, every dollar going to the Red
Cross.H. A. "Dixie" Fleeger, the crack
shooter of the local club, is hoping
that some of the Rose City slickers de-
cide to visit this village for the big
championships, because the local
golfers is experiencing his best year at
the Scottish game. Fleeger, competing
for the Seattle championship Friday
and Saturday, showed his old-time skill,
his score of 71 in the opening round
being one of the finest of the season,
over the tricky north club links.The Seattle man lost out in the final
event last season, contested at the
Waverly Club at Portland, and he is
thirsting for revenge. While Rudolph
Wilhelm took the measure of "Dixie"
in the Oregon meet, "Dixie" Leard, is
believing the Seattle man would reverse
the decision in his own backyard.Several young players from the
metropolitan links are playing great golf
now and with Vancouver, Victoria,
Spokane and other cities promising to
send some of their best representa-
tives, the scramble for the big honors
promises to be interesting.While baseball is not attracting an
enormous amount of interest from old
George Public at the present time, the
brand of ball being served by Seattle's
scrappy manager, William Leard, is
causing the fans to sit up and wonder
what he has in store for them.A couple of seasons ago Wicked
William was just an ordinary ball-
player, not quite good enough to make
a "C" League team. But today
Leard is playing better all-around
baseball than any other man in the
league. Besides starting the second
second pillow the Seattle manager is
ranking as follows with the sticks:Third in batting, with mark of .384;
first in run-getting, with 27 markers;
second in stealing bases, with 16; sixth
in total base hitting, with 57.Pretty good for an old bird who was
playing ball when the men were
drawing salary in this league were in
rompers, think Seattle fans.Willie Robinson and Frankie Tucker
will furnish the boxing headlines for
this coming week, with Chet Neff and
Billy Williams, the Portland boy, play-
ing the second round.Robinson and Neff boxed a good
draw at the last show, and the Cali-
fornian made such a good showing
that he was signed to meet Tucker at
the "Elks" Club Tuesday, Tuesday.
Neff was coming along at a fast clip
late, and many think he has a good
chance to beat the southerner. Billy
Williams and Chet Neff have been
four rounds a month ago, the Seattle
boy getting a close verdict. Many of
the fans thought it should have been
a draw, as the two were matched.The ten-round bout scheduled for
Bremerton June 22 promises to empty
this town of boxing fans. It has been
many a day since Neff had followers
have seen a real 10-round scrap, and
everybody is planning on going over
to see the fun. Matchmaker Nate
Druymann, brother of the man who is
putting on the Aberdeen shows, is
staging the bout for the Red Cross,
and it is estimated that \$5000 or \$6000
will be raised for the war fund.King and Farmer put up two slash-
ing bouts this Spring, one here and
the other in Tacoma. Both men are
cocky, and the two were matched
for the second round. The bout was
scheduled for 10 sessions, it is pretty
certain that a winner will be decided
this time.Every trapshooter within the borders
of this fair land is talking about the
match between Billy Heer, the Okla-
homan, and Frank Troch, the Van-
couver, Wash., man.One expert who thinks the Easterner
will beat the Western champion is P.
J. Holahan, the Portland professional.
Holahan has followed the careers of
both men and he thinks that the crack
Oklahoma shooter is too tough a bird
for Troch to tackle. However, Seattle
sportsmen are backing the Washington
man to the limit, and the largest crowd
that has ever seen a trap event in
the history of the city, will be on hand
when he two men compete at the Green
Lake traps this month.The action of the college coaches in
voting for the continuation of Inter-
collegiate sports meets with the hearty
approval of Seattle athletic followers,
Coach Claude Hunt, of Washington, is
one who thinks athletics should be
encouraged if there is no one left to
play but the women, and now that it is
settled that football will be on next
Fall's programme, followers of the
gridiron game are breathing easier.He Will Welcome
a pouch of
Real GRAVELY Chewing PlugAny gift from the folks back home means
a lot to the boy.When you send him tobacco, let it be
good tobacco—tobacco worth sending all
that long way—the flat, compressed plug
of Real Gravely.Give any man a chew of Real Gravely Plug, and
he will tell you that's the kind to send. Send the
best!Ordinary plug is false economy. It costs less per
week to chew Real Gravely, because a small chew
of it lasts a long while.If you smoke a pipe, slice Gravely with your knife
and add a little to your smoking tobacco. It will give
flavor—improve your smoke.SEND YOUR FRIEND IN THE U. S. SERVICE
A POUCH OF GRAVELYDealers all around here carry it in 10c pouches. A 3c stamp
will put it into his hands in any Training Camp or Season of
the U. S. A. Even "over there" a 3c stamp will take it to him.P. B. GRAVELY TOBACCO COMPANY, Danville, Va.
The Patent Pouch keeps it Fresh and Clean and Good
—It is not Real Gravely without this Protection Seal
Established 1891