



Longest Days Are Here Make Them Bigger, Too

THE Velie Six expands the day for bigger things—more accomplished through quicker and better personal transportation. Better recreation for the family in motoring the Velie way when the work-time is over. Economical, too. The Velie saves that margin that separates good investment from wasteful expense.

You want power, style, comfort, performance and endurance at an investment cost. Let us demonstrate your choice of the nine superb body styles.

D. C. WARREN MOTOR CAR CO., Inc.
Oregon and Southern Washington Distributors. 58-60 N. 23d St.

VELIE MOTORS CORPORATION, MOLINE, ILLINOIS
Builders of Automobiles, Motor Trucks and Tractors



C. L. BOSS EXPANDS

Portland Auto Dealer Opens
Vancouver, Wash., Branch.

SNYDER TO HAVE CHARGE

Desirable Quarters in Vancouver
Business Section Obtained as
New Branch Sales Office for
Maxwell and Hudson Cars.

The C. L. Boss Automobile Company has leased quarters in Vancouver, Wash., at 110 Sixth street, for the purpose of establishing a branch sales office for Hudson and Maxwell motor cars. L. B. Snyder, one of the most successful salesmen of the Boss organization, will be in charge. Associated with him in the sales end of the business will be George O. Gorham, formerly with the Pacific KieselKar branch. The location chosen by Mr. Boss is one of the most desirable in the city of Vancouver. It is in the heart of the business district. Alterations are being made in the building and a glass front is being installed, so that when the work is completed the show rooms will be the most attractive of any in the city.

Mr. Boss believes that with the ship-building industry in Vancouver increasing as it is, the population of that city will double in a short time and that the field will be most desirable for motor car sales.

R. J. McNeill, partner in the C. L. Boss Automobile Company, returned last week from Detroit, where he spent several days studying the automobile situation and conferring with the officers of the Hudson and Maxwell car companies. He came back imbued with the enthusiasm and high tension that prevails in almost every factory there, as the majority of plants are handling government contracts and every one in the industry is working his hardest to speed up the output of motor-propelled vehicles for Government use in the war.

Lake Steamer Chartered.
Means of securing transportation of automobiles to the Coast was one of the problems Mr. McNeill had to deal with. He solved this to the extent of getting around the freight embargo in effect east of Chicago, by chartering a lake steamer and transporting a cargo of Hudsons to Duluth, where they were loaded on freight cars to be shipped to Portland.

The chief object of Mr. McNeill's visit to Detroit was in connection with the small Hudson automobile, the Essex, which will soon be ready for delivery. The Hudson factory representatives of this small car are so out of the ordinary that both dealers and the public in general are looking forward with keenest interest to its arrival early in July. Says Mr. McNeill, Hudson officials make the claim that this small automobile will out-demonstrate any stock car in hill climbing, and will run farther on a gallon of gasoline than any other automobile manufactured.

AUTO TRAVEL CHEAPER

WEIGHT PER PASSENGER MUCH HIGHER ON RAILROADS.
Consequently, Use of Auto for Passenger Transportation Saves Much Precious Fuel.

As a means of transporting individuals, the steam railroad train, with its big passenger capacity, its level route and tracks of steel, has the casual observer will tell you, all the advantages in its favor as a utility among modern power-driven conveyances. It remained for the automobile, however, to upset this old standard and at the same time to show the fallacy of any connection between automobile travel and extravagance.

The thing that throws light on comparative efficiency is the question of weight," declares Del Wright, of the Pacific KieselKar branch. "Take, for instance, the average five-passenger automobile; it weighs about 3500 pounds, without passengers or, when loaded, not over 5500 pounds. On this basis the automobile is required to move 700 pounds per passenger load, as a utility engine must push up and down hill and over the country. How moderate this weight is beside that of other forms of conveyance.

"On the other hand, our high-class Pullman trains carry a weight per passenger of 10,000 pounds. On local trains, with day coaches, the burden is, of course, smaller—between one and two tons per passenger seating capacity. These figures necessarily include the weight of the locomotive, tender, baggage car, or in other words, the weight of the entire train, just the same as the automobile figures include the weight of the entire car.

"It is evident that in both cases the weight per passenger requires power in proportion to move it and power means fuel. In these days of conservation, when the saving of fuel is such an important item, weight reduction, as worked out in the automobile, is apparently a key to the solution that our railroads will sometime have to consider.

ROADS TO SEATTLE ARE GOOD
Carl D. Shoemaker Makes Trip in His Overland Car.

Carl D. Shoemaker, State Game Warden and Harvey Morland, deputy warden, made a business trip to Seattle last week in Mr. Shoemaker's Overland car. They found the roads excellent, though somewhat cut up and a little muddy between Kalama and Castle Rock, Wash. The worst stretch of the whole route, Mr. Shoemaker says, is that between Kelso and Castle Rock, and even it cannot be called bad now. They went by way of Toledo and from there to Chehalis over the main highway. This route, which was recently opened, gives several miles of pavement this side of Chehalis and is a great improvement over the Napavine route.

Mr. Shoemaker is enthusiastic about Overland service. He had occasion to call on Manager Thelless, of the Overland branch in Seattle in connection with a minor adjustment and was not only treated well, but royally.

Leaks in Radiators.
A frequent cause of leaks in radiators is that the vents in the filling

"When you realize, however, that this powerful motor will haul a full ton load at a speed of 29 miles per hour and keep it up mile after mile without complaint, you will appreciate that it has more than adequate power for the work for which it is designed.

"It is not only strong and powerful—built to stay in service—but it has behind it, insuring its high quality, the reputation of the great Nash organization."

Anderson Patent
"AUTOREELITE"
Automatic Extension Spotlite
Twelve-Foot Cord.
Enclosed Reel.
Use the light where you need it.
\$8.50 Retail
W. S. FLEMING, Distributor
Oregon, Washington, Montana, Idaho
112 Fourth St., Portland, Or.
Write for Territory.

DOCTOR SPARK

NOTHING ON YOUR CAR
—is more delicate—
nothing quite so much
demands a specialist's
attention, as

YOUR STORAGE BATTERY!
No Extra Charge
Here for a
Specialist in—
Recharging,
Repairing, and
New Batteries

DOCTOR SPARK
"Spark" Specialist
GIBSON ELECTRIC GARAGE & STORAGE BATTERY COMPANY.
Marshall 1752
12th and Alder

DEALERS WANTED

FOR MEDIUM-PRICED, LIGHT SIX AUTOMOBILE
A big advertising campaign is producing hundreds of inquiries which must be referred to local dealers near the inquirer.
IMMEDIATE DELIVERIES FROM PORTLAND
This is an unusual opportunity at a time when the demand for this type of car can hardly be supplied.
PORTLAND AND VANCOUVER OPEN FOR LIVE WIRE SALESMEN OR DEALERS
Write or Wire P 165, Oregonian

Lexington

MINUTE MAN SIX

Cannot Supply Demand Even with Ten Factories—

—working overtime to produce automobile parts, that are affiliated with and contribute to Lexington.

Our exceptional manufacturing facilities and reduced production costs enable us to market this better car for less money.

There is going to be an increasingly acute shortage of cars.

Before this fact became public property, and was being whispered about, people everywhere began buying up Lexington cars. Some bought more than one.

Others got rid of their used cars in a rush—they were wise—for no one knows when a car of Lexington's quality can again be marketed at its present moderate cost.

Our exclusive Moore Multiple Exhaust System prevents dead gas from choking the engine—adds power and saves fuel!

More than 100 separate parts made integral with the frame prevent rattles and squeaks.

The motor develops 40 horse-power. The wheelbase is 122 inches.

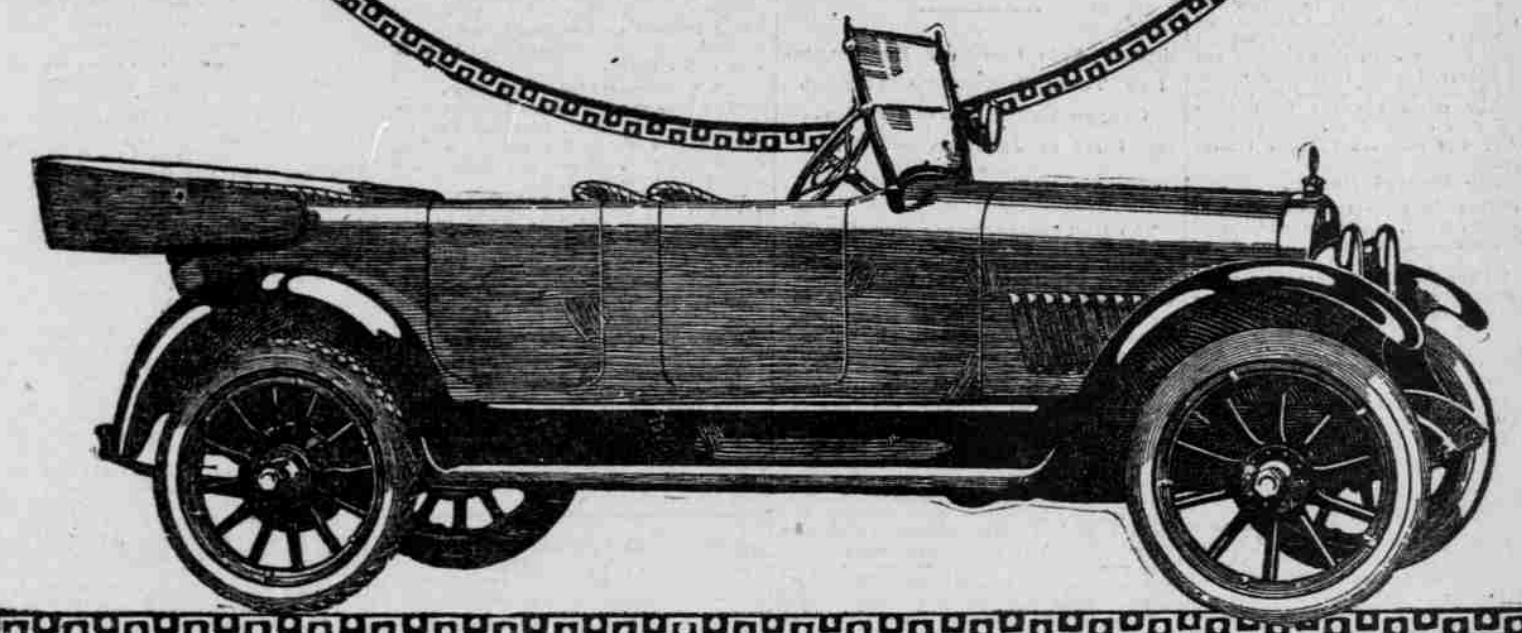
The price has not been raised, but—
Do not wait!

BRUNN MOTOR CAR CO.
444-446 Stark St., at 12th.

Lexington Motor Company, Mfrs., Cognersville, Ind., U. S. A.

\$1585

Series "R" five-passenger Touring Car with two auxiliary seats. All prices f.o.b. factory and subject to change without notice.



GRANT SIX

caps and overflow becomes choked, with the result that steam accumulates in the radiator and the pressure, seeking an outlet, forces an opening at the weakest point. A little attention to the vent will remove the cause of trouble.

Regains Climb Record.
Several weeks ago a 12-cylinder automobile went out and climbed Mount Wilson, in California, in 27 minutes and 17 seconds, lowering the former record held by a Maxwell car. A few days ago Walter Lord, of Los Angeles, drove a Maxwell touring car up the mountain side in the wonderful time of 26 minutes and 56 seconds.

Nothing on your car is more delicate—nothing quite so much demands a specialist's attention, as your storage battery!

No extra charge here for a specialist in recharging, repairing, and new batteries.

DOCTOR SPARK "Spark" Specialist
GIBSON ELECTRIC GARAGE & STORAGE BATTERY COMPANY.
Marshall 1752
12th and Alder

DEALERS WANTED FOR MEDIUM-PRICED, LIGHT SIX AUTOMOBILE

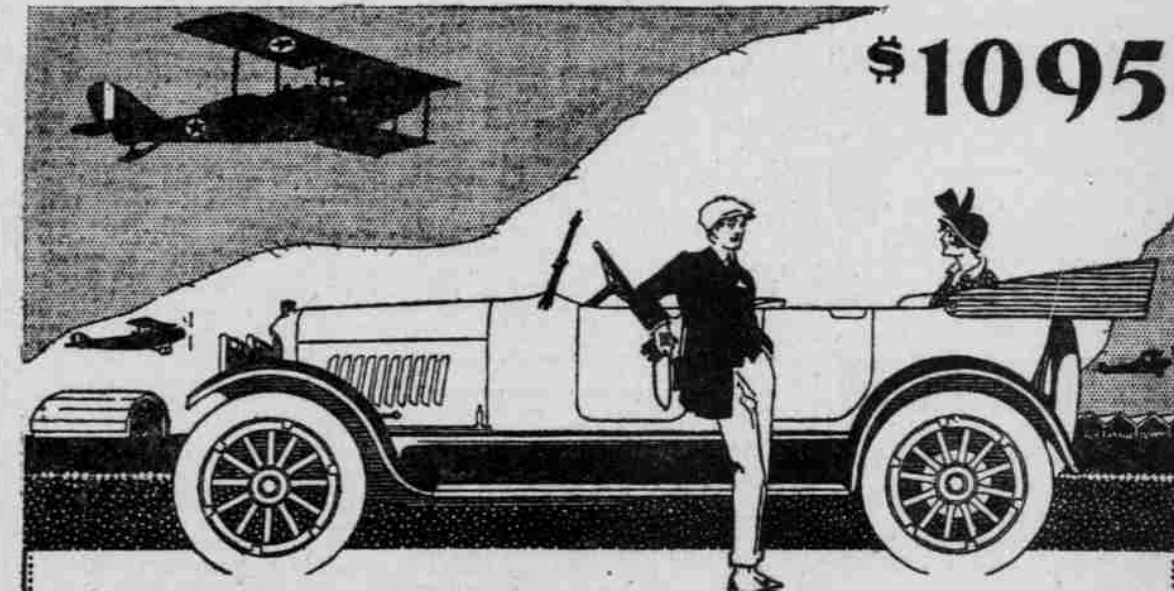
A big advertising campaign is producing hundreds of inquiries which must be referred to local dealers near the inquirer.

IMMEDIATE DELIVERIES FROM PORTLAND

This is an unusual opportunity at a time when the demand for this type of car can hardly be supplied.

PORTLAND AND VANCOUVER OPEN FOR LIVE WIRE SALESMEN OR DEALERS

Write or Wire P 165, Oregonian



GRANT SIX

Smooth-Running As An Airplane

THERE is something of the buoyant quality of the airplane in the way the GRANT SIX rides. For this the long 46-inch cantilever rear springs are mainly to be credited, but car balance and light weight help to a marked degree. And the double decked cushion springs add their important share to the riding comfort for which the GRANT SIX has become so well known.

In this latest model, forced feed oiling and a balanced crankshaft have added materially to the efficiency of the GRANT SIX engine and we believe this power plant to be the finest mechanically and every other way, that has ever been used in a car of comparable price.

Another point which people have remarked about is the almost complete absence of vibration in the power plant.

In keeping with its splendid mechanical features, the new GRANT SIX is a car of beautiful lines and finish. Its length is accentuated by skillful body design.

The GRANT SIX overhead-valve engine runs smoothly at all speeds. It is powerful and flexible and quiet.

Yet it is the most economical six in existence, we believe. Owners average 20 miles to a gallon of gasoline and 900 miles to a gallon of oil.

To make sure of your GRANT SIX we advise the placing of your order now. \$1095 f. o. b. Cleveland.

Manley Auto Co.

ELEVENTH AND OAK STS., AT BURNSIDE
Portland, Oregon

GRANT MOTOR CAR CORPORATION—CLEVELAND