

CAR THEVES HERE BOLDER THAN EVER

Insurance Man Warns Motorists Rates Will Go Up if Losses Continue.

VIGOROUS MEASURES URGED

W. M. Klinger, of San Francisco, Declares Companies May Even Refuse to Insure at All Unless Situation Improves.

One of two things is going to happen in Portland, and happen very soon, in connection with the unrestrained epidemic of automobile stealing that is going so merrily along here. Either the thefts must be curbed and the thieves punished when caught, which is a rare exception at present,

as the worst automobile theft risk on the whole coast.

The raising of theft insurance rates would be only the first step. Unless conditions improved at once the next step would probably be to refuse to underwrite any automobiles in Portland against theft.

In Detroit the automobile owner cannot obtain theft insurance at all. Unless Portland takes decisive action to curb thefters the same condition is likely to prevail here.

Thieving Curbed in South.

"As the result of campaigns against automobile thieves in Los Angeles and San Francisco the number of thefts has been reduced to a minimum. The courts there have set down hard on the thieves and on the 'fences' behind them through whom they disposed of stolen cars and accessories. The work has also been aided by the passage of ordinances aimed against automobile thieves.

"Some of these ordinances might very well be adopted in Portland. Four ordinances that recently went into effect in San Francisco are particularly applicable here.

"One of these ordinances requires dealers in second-hand cars to report to the police on blanks furnished by the police complete descriptions of all second-hand cars taken in by them for trade or sale.

"Another ordinance requires that no automobile wrecker company may wreck or dismantle a car without first obtaining a permit from the police department.

"A third ordinance makes it a misdemeanor for any person to have in his possession an automobile tire, knowing it to be the property of another, from which the number has been removed.

DUPLEX KEEPS ON

Truck Bucking Mountain Snow En Route to Gold Beach.

ROAD CONDITIONS FIERCE

Four-Wheel Drive 3 1/2-Ton Truck That Went Through Pass Creek Canyon on Way Over Coast Range Into Curry County.

Somewhere in the Coast Range Mountains between Grants Pass, Or., and Crescent City, Cal., a 3 1/2-ton Duplex four-wheel-drive truck is bucking snow about this time, en route to Gold Beach, Or., where it is to be delivered to the County Commissioners of Curry County.

This is the same Duplex that made the remarkable run on March 1 through Pass Creek Canyon on the Pacific Highway in Douglas county, as told in The Oregonian's automobile section last Sunday.

With Roy Greulich, service superin-

its scope so as to include the entire country.

Organized primarily to assist traffic officers and the motoring public by standardizing traffic laws, the California association already has proved of value in other directions, principally in running down automobile thieves and speeders. These results are accomplished by an interchange of warrants and information.

Another result was making a uniform crossing signal so that now any motorists touring California knows just what to look out for when he comes to a street intersection, whether he be driving in the northern, central or southern part of the state.

In addition to having the backing of the Oakland Chamber of Commerce, the movement for a National traffic officers' association is heartily indorsed by H. C. Ostermann, field secretary of the National Lincoln Highway Association.

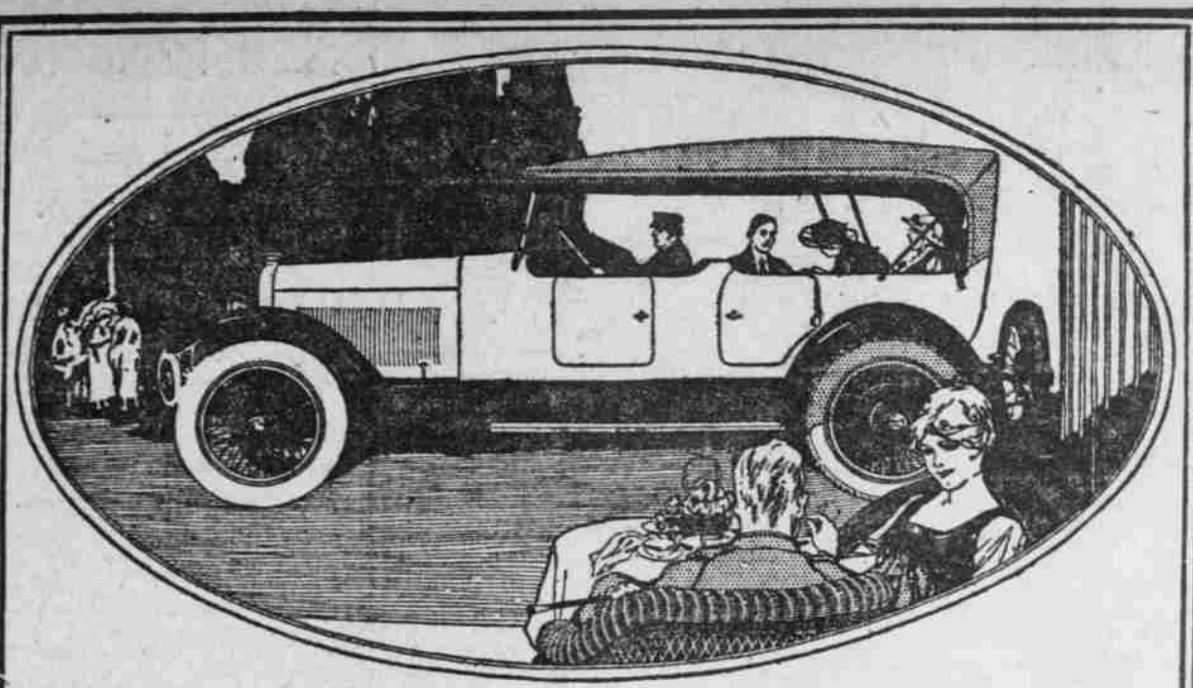
It is proposed to hold a National convention in Oakland in the coming summer.

ADAMS IN NEW ORGANIZATION

Steamer Salesman Goes With Twin States Motor Car Company.

George V. Adams, one of the best known automobile salesmen in Portland, has severed his connection with the C. L. Boss Automobile Company to join the sales organization of the Twin States Motor Car Company, distributor for the Chandler Six, the Saxon Six and the Metz. He will give his attention to all three cars.

During the week before he joined the Twin States Motor Car Company, Mr. Adams was one of the busiest little au-



Announcing the Four-Passenger Chandler Sport Model

ADDITION of this new four-passenger Sport Model completes the already attractive group of Chandler body types—six designs of open and enclosed or convertible cars that incorporate most careful thought for your thorough comfort and convenience in the details of appointment and equipment.

Of striking design, with high hood and radiator and low-cut body, this attractive new Chandler model at a glance gives the true impression of power, speed and all-round efficiency of performance. It has very liberal seating accommodations for four passengers, rides wonderfully and is mounted upon the regular Chandler chassis except that thirty-two-inch wheels and a gear ratio of 3.78-1 are used. The body, hood and radiator are painted in a beautiful electric blue, highly finished. Running gear and fenders are black.

Five white wire wheels are offered as extra equipment, list \$110.

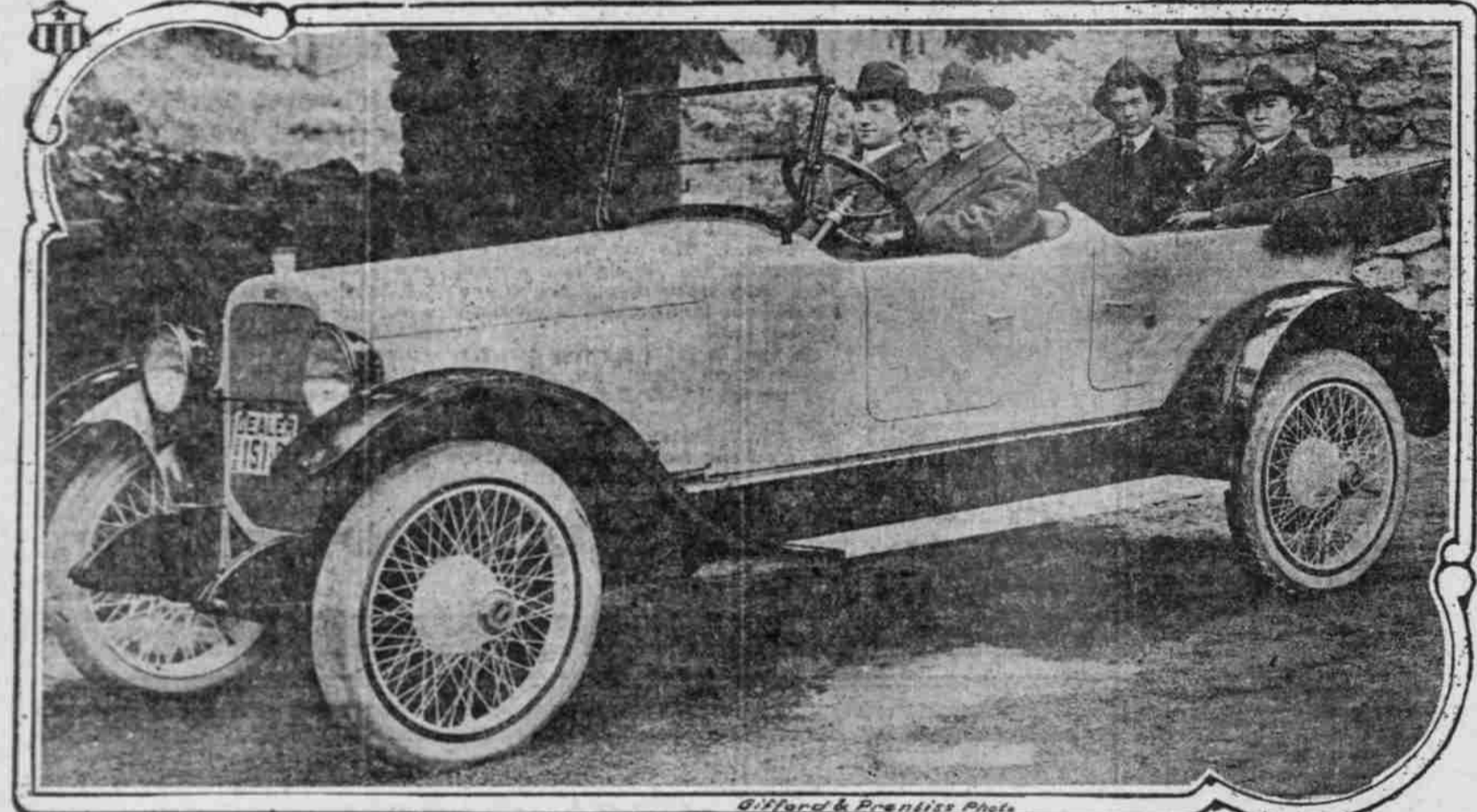
SIX SPLendid BODY TYPES

Seven-Passenger Touring Car, \$1595
 Four-Passenger Sport Model, \$1675; Five White Wire Wheels, \$110 Extra
 Convertible Sedan, \$2295
 Convertible Coupe, \$2195
 Limousine, \$2895
 (All prices F. O. B. Cleveland)

Twin States Motor Car Company

Distributors
 514-516 ALDER ST., CORNER SIXTEENTH

CHANDLER
 MOTOR CAR COMPANY, CLEVELAND



VIEW OF NEW MODEL AND MEN WHO HANDLE CHANDLER AGENCY HERE.

R. H. Coster, who is retail sales manager for the Chandler, is at the wheel next to him is John N. Sharp, president of the Twin States Motor Car Company, Chandler distributor. In the back seat are L. V. Rawlings (left-hand side), field manager for the Chandler in this territory, and R. E. Murphy, Vice-president of Twin States Motor Car Company.

of the insurance underwriters are virtually certain to increase the rate of automobile theft insurance, probably by doubling it.

This warning was brought to Portland last week by W. M. Klinger, of San Francisco, Pacific Coast head of the automobile department of the London & Lancashire Insurance Company. Mr. Klinger says the insurance companies are stirred up over the situation in Portland due to heavy insurance losses from theft, and are determined that something be done to remedy it.

In the past year, says Mr. Klinger, the insurance companies have paid out fully \$100,000 in Portland to owners of cars that had been stolen.

Jay Riders Steal Cars.
 Mr. Klinger is conversant with the automobile theft situation all along the Pacific Coast, and he says that

"Still a fourth ordinance makes it a misdemeanor for any person to have in his possession an automobile on which the factory serial number, the engine number, or any manufacturer's identification mark has been defaced or removed.

Mr. Klinger is establishing in the Northwest for the London & Lancashire Insurance Company a chain of branches of an identification bureau recently opened in San Francisco. The branch here will be in the office of Fields & Honeyman, Portland agents of the company. This bureau will collect from automobile owners, by means of postcards to be mailed to them, full description of their cars, together with identification numbers and other identification marks.

When a car is stolen this data will be turned over, not only to the local police but to police of every city on the Pacific Coast.

tendent, at the wheel, the truck left the Northwest Auto Company in Portland on February 27 for a drive-away delivery to Curry County. The county has purchased it for heavy road construction work.

After getting through the mud of Pass Creek canyon, which has been impassable even to horse-drawn vehicles for the last three months, Greulich reached Grants Pass, 100 miles south of Roseburg, on March 4. He drove the Duplex up the 20 per cent grade of Wolf Creek hill on the way, and through Cow Creek Canyon, which is bad enough at this time of year, though not comparable with Pass Creek Canyon.

Snow Deep in Mountains.
 The Duplex may have reached Crescent City by this time on its way to Gold Beach. It probably is still in the mountains, however, for C. M. Menzies, manager of the Northwest Auto Company has not heard from the truck since he left Grants Pass. The Duplex will have its troubles getting over the mountains for the road is still closed and it will have to break through the snow for most of the distance.

"Arrived here at 8 P. M.," Greulich wrote from Grants Pass on Monday. "The roads are rotten. Have been bucking snow all day, and am leaving for Crescent City in the morning. They tell me that there is four or five feet of snow in the mountains. 'Everything going fine, but it is sure hard traveling. All we can average is a couple of miles an hour, as the roads are just wide enough for the truck, and you have to back for every turn. Don't think we can make Gold Beach before the end of the week, and it takes two days by horse stage to get back to Grants Pass.

tomobile salesman in town. On one day, Tuesday, he closed sales for seven Maxwell cars, four of them being new cars and the other three used cars.

The following day, Wednesday, he sold four more cars of the same make giving him a total of 11 sales for two days. In the past 20 days, Mr. Adams has sold 25 cars, mostly Maxwells, not quite equalling his record of last August, when he sold 24 cars for Mr. Boss.

TRUXTUN DEMONSTRATOR SOLD
 Roy Hemphill Has to Let It Go When Purchaser Insists.

Roy Hemphill, manager of the Western Motor Car Sales Company, is wiring to San Francisco in hot haste to hurry up a shipment of Truxton Truck Attachments which is overdue now. He received one demonstrator a few days ago, but a purchaser came along who demanded it so insistently that he let it go, thinking he would have a car-load more right away. The Truxton, which comes in 1 1/2 and 2-ton capacities, is an internal gear drive truck attachment that will fit the chassis of any make of passenger car.

Chehalis Autolists to Join Body.
 CHEHALIS, Wash., March 9.—(Special.)—An energetic campaign for new members for the Western Washington Automobile Association is to be

USED-CAR SALES REGULATED BY CLEVELAND POLICE.
 The sale of used cars and parts is regulated by an ordinance passed in Cleveland, says the Power Wagon. Dealers engaged in the business are required to furnish the department of safety the names and addresses of all persons from whom second-hand machines are purchased, the time of purchase and the make, license and factory number of the vehicles. The information must be filed with the Chief of Police daily by noon and must give complete particulars regarding the previous day's business. Violations incur liability to a penalty of \$100 and six months imprisonment.

MOTOR CAR IS PUBLIC UTILITY
Fuel Administration Recognizes Importance of Auto Industry.
 "We long ago dropped the term 'pleasure car' for that of 'passenger car,'" says W. L. Hughton, of the Cleveland Fuel Administration, "because that is really what it is—the most dependable and flexible passenger-carrying utility the world has ever produced.

"In this connection no other proof is so conclusive and final as that of the ruling of the Fuel Administration, exempting garages and service stations from the observance of 'heatless' Mondays. In this ruling it stated that motor vehicles of all classes were considered as coming under the head of 'public utilities.'

Big Phone Bill.
 It is estimated that more than 10,000 telephone calls are handled daily by the switchboard operators employed at Willys-overland, Inc. More than 600 phones are distributed through the factory and offices. About 500 telegraph and cable messages are received at the Toledo office of the company each day.

An automobile kept by an intelligent man now is less expensive than a horse and buggy.

while Portland has a better record than the other large cities in the number of automobiles recovered after being stolen, it has a much larger proportion of automobiles stolen for joy riding purposes than any of the others. Even when recovered, automobiles in such cases are almost always more or less damaged.

The reason for Portland's better comparative showing in the number of stolen automobiles, says Mr. Klinger, is due largely to the fact that there are fewer outlets here for the disposal of the thieves of stolen cars, parts and accessories than in San Francisco, Los Angeles or Seattle.

Courts Urged to Act.
 At the same time, they promise cooperation in any campaign that may be undertaken.

"I doubt if motorists here, and the courts realize how invaluable it is that rates for automobile theft insurance will be increased unless the brakes are put on hard to stop the operations of automobile thieves in Portland," said Mr. Klinger. "The courts can help greatly in this work.

"Instead of getting better here, conditions are becoming worse. In other towns along the Coast vigorous repressive measures have been adopted, particularly in Los Angeles and San Francisco, and with much success. But I am sorry to say that Portland is now regarded by the insurance companies

Traffic Association Plan
Oakland Commerce Chamber Urges Portland to Join.
 Letters have just been received by Chief of Police Johnson and Sheriff Hurlbut, urging them to take steps to organize a state traffic officers' association and become a part of a National association. The letters come from Joseph G. Wallmann, corporal in charge of the traffic department of the Oakland, Cal., police force, who is president of the California Traffic Officers' Association.

This organization, which was formed through the efforts of the Oakland Chamber of Commerce, has been so successful that it is proposed to broaden

TIRES

Save One-Third on the Cost of Your Tires

ALL STANDARD MAKES, SUCH AS
 Firestone, Batavia, Republic, Lee, Savage, McGraw, Etc., Etc.

30x3 1/2.....	\$ 8.85	\$ 12.75
32x3.....	13.75	19.20
31x4.....	17.25	21.40
32x4.....	19.25	22.00
34x4.....	17.95	24.70
35x4.....	21.35	24.70
32x4 1/2.....	26.25	32.25
34x4 1/2.....	24.50	30.25
38x4.....	25.25	44.95
37x5.....	30.85	49.50

MAIL ORDERS PROMPTLY FILLED
 If you will state the size tire you use we will quote you prices on the different makes we have in stock; be sure and state the style of bead, straight side or quick detachable, plain or non-skid treads.

SPECIAL PRICES TO DEALERS IN QUANTITIES
Portland Tire Co.
 331 Burnside Street
 Portland, Oregon
 Branches in All Principal Cities



Play Safe---Order Now

IN a week or two the spring selling season will be at its height. Every day makes plainer the wisdom of placing your order for a Grant Six now.

For all these reasons—and because no matter how long you wait or how far you look you cannot match its value—we urge you to place your order for a Grant Six immediately.

The new model is absolutely the finest car mechanically and the most beautiful car ever sold at a comparable price.

The nationally famous Grant Six economy (20 miles to a gallon of gasoline, 900 miles to a gallon of oil), the roominess and comfort of the car and the reputation of its wonderful overhead valve engine, are just a few of the reasons for making the Grant Six your choice.

Price, \$1055 f.o.b. Cleveland

MANLEY AUTO CO.

Elyventh and Oak at Burnside
 GRANT MOTOR CAR CORPORATION—CLEVELAND



W. M. Klinger, of San Francisco, Warns Portland Motorists That Auto Theft Insurance Rates Will Be Raised Here if Thefts Are Not Curbed.