

NATURAL GAS WELL IS PROMINENCE FLOW

Benton County, Wash., Comes Into Prominence With 3,000,000 Cubic Feet Daily.

FUEL WASTED FIVE YEARS

Original Discovery Made in May, 1912, While Boring Artesian Well for Water to Supply Prospective Cattle Ranch.

BY ADDISON BENNETT. It is nothing new to bore wells in Oregon and Washington with the hope and expectation of striking natural gas or petroleum; it is quite another question to find either in paying quantities. Perhaps it would be safe to say that over 100 wells have been started in the two states, and some have gone down as deep as 3000 feet but up to a few days ago neither gas nor oil was found in any appreciable quantity.

Gas Wasted Five Years. Let us go at the subject chronologically, for this is a really a rediscovery, as a well at the location, or within a few hundred feet thereof, has been flowing at the rate of 300,000 cubic feet a day since May 25, 1912. It was on land belonging to the Conservative Lang Company, of Spokane. They owned several thousand acres of scrubland in Benton County, bordering on the north of the Battlemore Hills, which is a range of hills something like 1000 feet high running from the northwest to the southeast, about 20 miles long, as shown on the map. These hills are practically half way between the Yakima and Columbia rivers, for in that township the Columbia flows practically from the west to the east.

Shepherd Lights Well. One day an impatient shepherd came along and touched a match to it, and a great flame shot heavenward. Finding it an easy matter to start the flame, but very difficult to stop, he went his way and left it. For something like 15 months the flame was a beacon by day and night, then the owners of the land, the Langs, thought they saw something worth while, so he leased the section on which the well was, and also took other adjacent lands, some from the state and some from private owners.

Well in Desolate Locality. Geographically the well is in section 21, township 11 north, range 26 E. W. M. It is almost due north of Irwin, Or., and 23 miles distant. It is 142 miles east and 67 miles north of Portland, or about 162 miles in an air line. The location is 15 miles west of the Columbia River, about the same distance north of the Yakima River, and from 11 to 12 miles north of the Northern Pacific and O. W. R. & N. W. R. south of the Chicago, Milwaukee & St. Paul Railway.

Gas Burns Freely in Stoves. The gas from the old well is piped to the houses erected for the workmen and burns in the cook stoves and heaters without any sort of refining or preparation, although the stoves are crude, simply wood or coal stoves, with a pipe in the firebox, through which a number of small holes have been bored. There is no odor apparent in the buildings or adjacent to the well.

Wedges Yield Gold. Wedges that split the great trees of the Oregon forests and split them in a fashion superior to all other wedges clove the way to the fortune that William Druck, once a resident of Portland, left when he departed this life on January 18 at Coronado, Cal.

Druck Marries in Australia. At Bathurst, Australia, he was wedded to Sophia Weir, and became the father of six children, three boys and three girls. The daughters alone survive him. In 1865 they left Australia and voyaged to San Francisco, and later to Portland.

Requests Are Announced. Specific requests have been announced by the Security Savings & Trust Company as executor and trustee in a synopsis of the will of the wedgemaker.

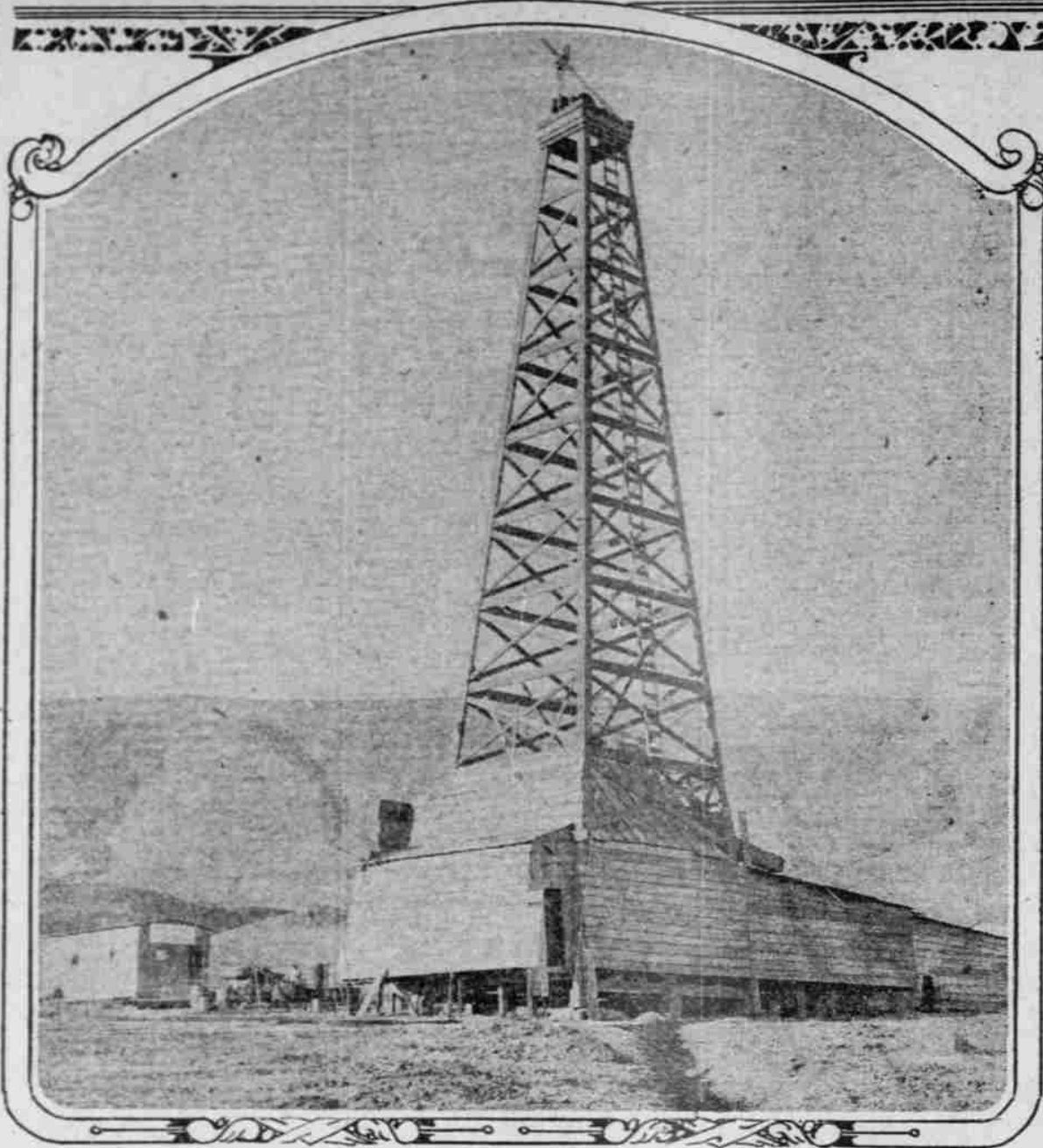
COTTAGE GROVE BOY ILL. Charles Whipples, Suffering From Pneumonia and Measles.

COTTAGE GROVE, Or., Feb. 9.—(Special.)—Charles Whipples, son of Mr. and Mrs. Finley Whipples, who enlisted in the Navy from Irwin, is dangerously ill at Oak Island Navy Hospital, across the bay from San Francisco. Last week his parents here received word that his life had been despaired of and Mrs. Whipples left Friday for her son's bedside. Since her arrival his condition has greatly improved, and hopes are held out for his complete recovery.

Delays to Be Corrected. Delays in dumping garbage at the city incinerator because of improperly constructed garbage wagons is being corrected by the city.

WILLIAM DRUCK, Pioneer of Portland and Famous Wedgemaker, Whose Death Occurred at Coronado, Cal., on January 18.

GAS WELL IN BENTON COUNTY, WASHINGTON, THAT FLOWS 3,000,000 FEET DAILY.



PROPERTY NOW BEING DEVELOPED WHICH OWNERS HOPE WILL LEAD TO BIG OIL STRIKE.

WEDGES YIELD GOLD

Career of William Druck, Once Portland, Notable.

FORTUNE MADE AT FORGE

German Immigrant of Early Days, Once Familiar Figure Here, at Death Recently in California Left Estate of \$275,000.

Wedges that split the great trees of the Oregon forests and split them in a fashion superior to all other wedges clove the way to the fortune that William Druck, once a resident of Portland, left when he departed this life on January 18 at Coronado, Cal.

Druck Marries in Australia. At Bathurst, Australia, he was wedded to Sophia Weir, and became the father of six children, three boys and three girls.

Requests Are Announced. Specific requests have been announced by the Security Savings & Trust Company as executor and trustee in a synopsis of the will of the wedgemaker.

COTTAGE GROVE BOY ILL. Charles Whipples, Suffering From Pneumonia and Measles.

COTTAGE GROVE, Or., Feb. 9.—(Special.)—Charles Whipples, son of Mr. and Mrs. Finley Whipples, who enlisted in the Navy from Irwin, is dangerously ill at Oak Island Navy Hospital, across the bay from San Francisco.

Delays to Be Corrected. Delays in dumping garbage at the city incinerator because of improperly constructed garbage wagons is being corrected by the city.

WILLIAM DRUCK, Pioneer of Portland and Famous Wedgemaker, Whose Death Occurred at Coronado, Cal., on January 18.

CITY SCORES AGAIN

Another Big Interest Coming to Portland Soon.

MRS. WILLA HELYER DIES

Lane County Resident Works Her Way Through College.

COTTAGE GROVE, Or., Feb. 9.—(Special.)—Mrs. Willa Helyer, who passed away February 2, was born January 30, 1875, 14 miles southeast of Cottage Grove. In 1893 she went to Sherman County, near Kent, Or., about 30 miles from the railroad. There she took up a homestead, which proved a valuable wheat ranch and which she still owned at the time of her death.

PINE GROVE INSTITUTE ON. Patriotic Note on Programme Which Will Be Closed With Sermon.

HOOD RIVER, Or., Feb. 9.—(Special.)—The fifth annual institute of the Pine Grove community, representative of the church, school, orchard industry and grange, which began last night and which annually attracts residents of all parts of the valley, is characterized this year by the patriotic note of the programme.

COTTAGE GROVE BOY ILL. Charles Whipples, Suffering From Pneumonia and Measles.

COTTAGE GROVE, Or., Feb. 9.—(Special.)—Charles Whipples, son of Mr. and Mrs. Finley Whipples, who enlisted in the Navy from Irwin, is dangerously ill at Oak Island Navy Hospital, across the bay from San Francisco.

Delays to Be Corrected. Delays in dumping garbage at the city incinerator because of improperly constructed garbage wagons is being corrected by the city.

WILLIAM DRUCK, Pioneer of Portland and Famous Wedgemaker, Whose Death Occurred at Coronado, Cal., on January 18.

CITY SCORES AGAIN

Another Big Interest Coming to Portland Soon.

MRS. WILLA HELYER DIES

Lane County Resident Works Her Way Through College.

COTTAGE GROVE, Or., Feb. 9.—(Special.)—Mrs. Willa Helyer, who passed away February 2, was born January 30, 1875, 14 miles southeast of Cottage Grove. In 1893 she went to Sherman County, near Kent, Or., about 30 miles from the railroad. There she took up a homestead, which proved a valuable wheat ranch and which she still owned at the time of her death.

PINE GROVE INSTITUTE ON. Patriotic Note on Programme Which Will Be Closed With Sermon.

HOOD RIVER, Or., Feb. 9.—(Special.)—The fifth annual institute of the Pine Grove community, representative of the church, school, orchard industry and grange, which began last night and which annually attracts residents of all parts of the valley, is characterized this year by the patriotic note of the programme.

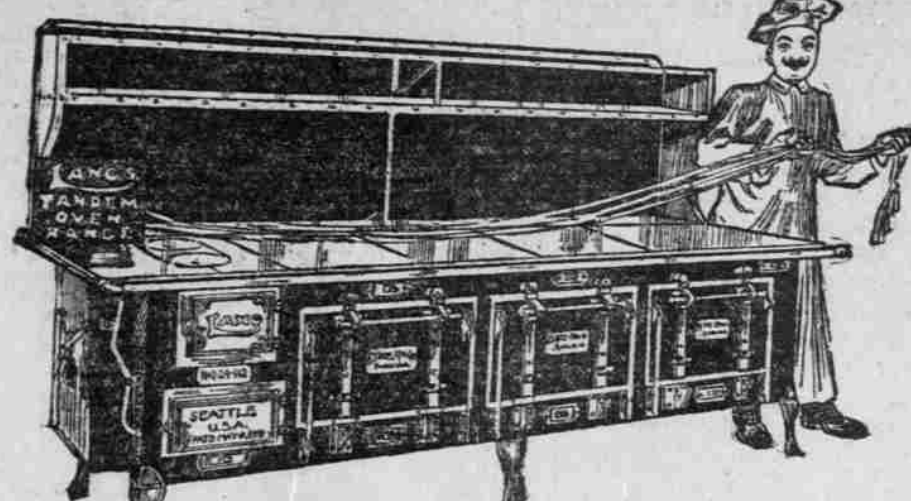
COTTAGE GROVE BOY ILL. Charles Whipples, Suffering From Pneumonia and Measles.

COTTAGE GROVE, Or., Feb. 9.—(Special.)—Charles Whipples, son of Mr. and Mrs. Finley Whipples, who enlisted in the Navy from Irwin, is dangerously ill at Oak Island Navy Hospital, across the bay from San Francisco.

Delays to Be Corrected. Delays in dumping garbage at the city incinerator because of improperly constructed garbage wagons is being corrected by the city.

WILLIAM DRUCK, Pioneer of Portland and Famous Wedgemaker, Whose Death Occurred at Coronado, Cal., on January 18.

Opening Announcement



Portland Branch F. S. Lang Mfg. Co. makers of the famous Lang's Hot-Blast Ranges

It is the best range on the market today and it burns one-half as much fuel as other ranges.

The Lang Range is a Pacific Coast product, adopted by the U. S. Army and Navy and used by the leading hotels and restaurants throughout the country. Ask the chefs—they know. Our family ranges have the same principle as the hotel ranges and burn coal, wood, sawdust or gas.



Housewives should look into this matter when purchasing a range. Every stove manufacturer will tell you his range is a fuel saver—but can he prove it? His range is constructed exactly the same as the other fellows'. Every range on the market has the same construction, same principle—except the LANG. Remember, this is a PATENTED Range—it must be different than other ranges, otherwise it could not be PATENTED. Its construction is entirely different, the stove-pipe is in one corner—the heated air comes in contact with the gases and smoke in firebox and produces PERFECT COMBUSTION. The grate is composed of separate grate bars, which can be closed up tight. The top has TWO LIDS only—leaving the entire cooking surface smooth. Housewives have found that they never use the back lids on stoves—they only tend to catch grease and dirt and hurt the draft. The LANG is the ONLY Range that has this feature.

The entire top and oven are heated evenly—no divisions or flue strips in the LANG Range. It is the most perfect baker on the market—and the most popular range in America.

AND REMEMBER the LANG Range is fully GUARANTEED—if it does not do everything we claim for it, we will take it back and refund purchase price. We will also take your old range in as part payment, and make you terms. YOU CANNOT AFFORD TO BUY ON OLD STYLE RANGE when the LANG HOT BLAST SMOKE BURNING RANGE, the new, modern, up-to-date range, is offered you at a LOWER price.

Take time to INVESTIGATE this wonderful fuel-saving range. Step into our salesroom NOW and let us show you WHY the LANG is the range for you to buy.

F. S. Lang Manufacturing Co. 191 Fourth Street, Moose Building, Near the Market

Western Pine Manufacturers' Association, With Headquarters in Spokane, to Open General Offices in Portland Shortly.

By the decision of the Western Pine Manufacturers' Association to remove its headquarters from Spokane to this city, Portland gains prestige as the center of the lumber activities in the Pacific Northwest. It is from this city that the general administration of spruce and fir production for war purposes is now directed.

The actual removal of the pine manufacturers' headquarters to this city will not be effected before some time in April, when the lease to their present offices in Spokane expires.

Rosarians Plan Celebration. Royal Rosarians will celebrate Lincoln's birthday next Tuesday evening with an informal dance and band concert in the lobby of the Multnomah Hotel.

Hotel. The concert will begin at 8 o'clock, and the dancing at 9:30 P. M. Robert Krohn will be master of ceremonies. J. B. Ettinger, director; John C. Boyer, assistant director; E. C. Peets, manager; Mrs. J. B. Ettinger, soloist, and George E. Hall, drum major, the Royal Rosarian quartet will sing.

CARVER STARTS JITNEYS

Second Attempt Made to Establish Service Under Franchise.

Stephen Carver is now making his second effort to establish jitney service in compliance with franchises granted him by the voters at the last city election. Two jitneys have been put on the Division-street run, operating from Fifth and Alder streets to East Thirtieth and Division streets.

Lawyers to Be Honored. Joint memorial services in honor of

Judge J. C. Moreland and Senator Charles W. Fulton will be held in the United States District Courtroom in the Postoffice building at 2 o'clock next Saturday afternoon, by the State and County Bar Associations. Judge Robert H. Tucker, president of the State Bar Association, has written, to every judge and many of the attorneys in Oregon, urging them to come, and a large attendance is expected.

Peter Lawning Held to Jury.

Peter Lawning was yesterday held to the Federal grand jury by United States Commissioner Drake on a charge of causing obscene literature to be sent through the mail. His bonds were fixed at \$1500. The specific charge against Lawning is that of inducing his minor children to compose indecent letters, which were mailed to a suitor of his 18-year-old daughter.

Albany Society to Meet. The Albany Society will hold its annual meeting next Thursday evening at 8 o'clock at the Central Library. All former residents of Albany and Linn County are invited to attend the meeting.

Only a Cold—Then a Cough—Then ?

First you feel a little chilly—then you can't get warm. Followed by smarting eyes and sneezes. Then comes the cough. Then what? That depends upon your system's condition. If you are strong, a few days unpleasantness. If you are weak, it may go on longer, may result seriously. The weakness gains, and a host of disease germs find lodgment. The next you know, you are really sick. Colds are dangerous when they cannot be thrown off; the strong man throws them off easily.

The Moral Is to Keep Yourself Well

A neglected cold leaves an after effect of a congested membrane. It may be in the nose, the throat, or the lungs. Sometimes it is in the stomach and intestines. Perhaps you have grown used to it, and fail to notice any soreness. But it's there. A fresh cold aggravates it. Soon you have chronic catarrh. In time, that harbors a cold and forms a point of infection. It spreads until your whole body suffers from systemic catarrh. Then you are really in danger. Don't wait for that.

But don't wait until you are sick. While wonderful cures of chronic colds and catarrh by Peruna are daily reported, and in the last forty years have been so numerous as to make Peruna the nation's Remedy, it is better to stay well. Have Peruna at hand, use it freely at the first symptoms, and you will keep your body so well fortified that you will be free of colds, free of catarrhal symptoms, and enjoy your life to the full.

That's the common sense way in which thousands of people preserve their health. It's the kind of preparedness we all agree upon. It's true life insurance, that pays the benefits while you can enjoy them.

Ask the thousands who use Peruna. It could not have gained the place it occupies in the American household if it did not have unusual merit. Forget your prejudices and let Peruna make good for you, as it has for so many.

You may obtain Peruna in tablet form for convenience. Carry a box with you!

The Peruna Company, Columbus, Ohio.

