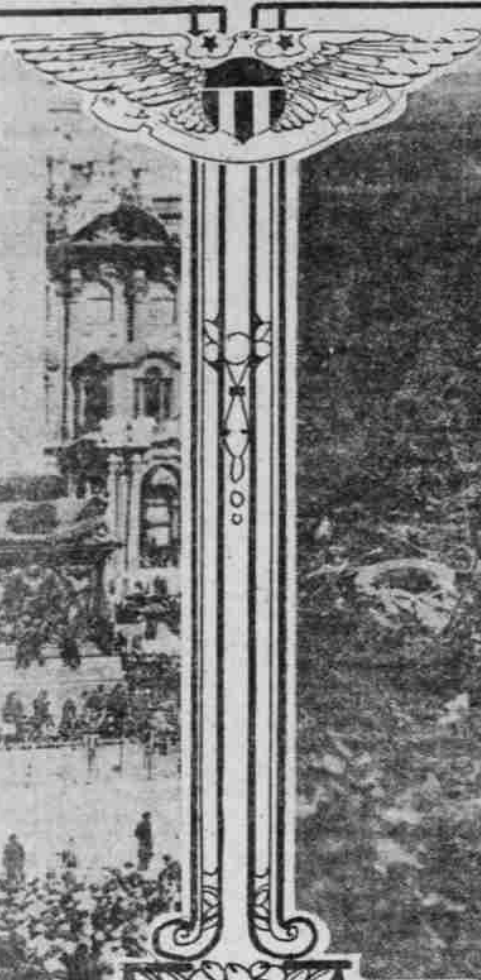


# AMERICAN FLAG IS MUCH SEEN AND HONORED IN FRANCE

Stars and Stripes Attain New Distinction in Bestowal of Decorations for Bravery—Vast Throng Hears Address of Russian Prime Minister Lenine—Engines Built for Slavs on Duty in New Jersey.



© Underwood.



© Underwood.

A VAST throng attended a meeting addressed by Nikolai Lenine, Prime Minister of the Bolsheviki government, in front of the Winter Palace in Petrograd. The crowd was made up largely of workmen and soldiers. This was after the Bolsheviki had taken over the government.

Marked with the insignia of the Government railways, engines made for Russia, which have not been shipped because of the uncertainty of the situation there, are doing duty "somewhere in New Jersey" pushing long lines of coal cars toward their destination to the places where the fuel is greatly needed. The locomotives were made in the Baldwin Locomotive Works, and are of a different type than the engines used regularly on American roads. These engines have been a great help in speeding the transportation of coal, and without them the coal shortage would have been even more acute.

Italian women and children of the northern districts have had a taste of the same sort of suffering that the women and children of Belgium and France experienced early in the war. The Austro-German forces driving over the mountains made them homeless refugees. Knowing by report the fate that awaited them if they remained in the path of the invader, they fled with what possessions they could carry to safety.

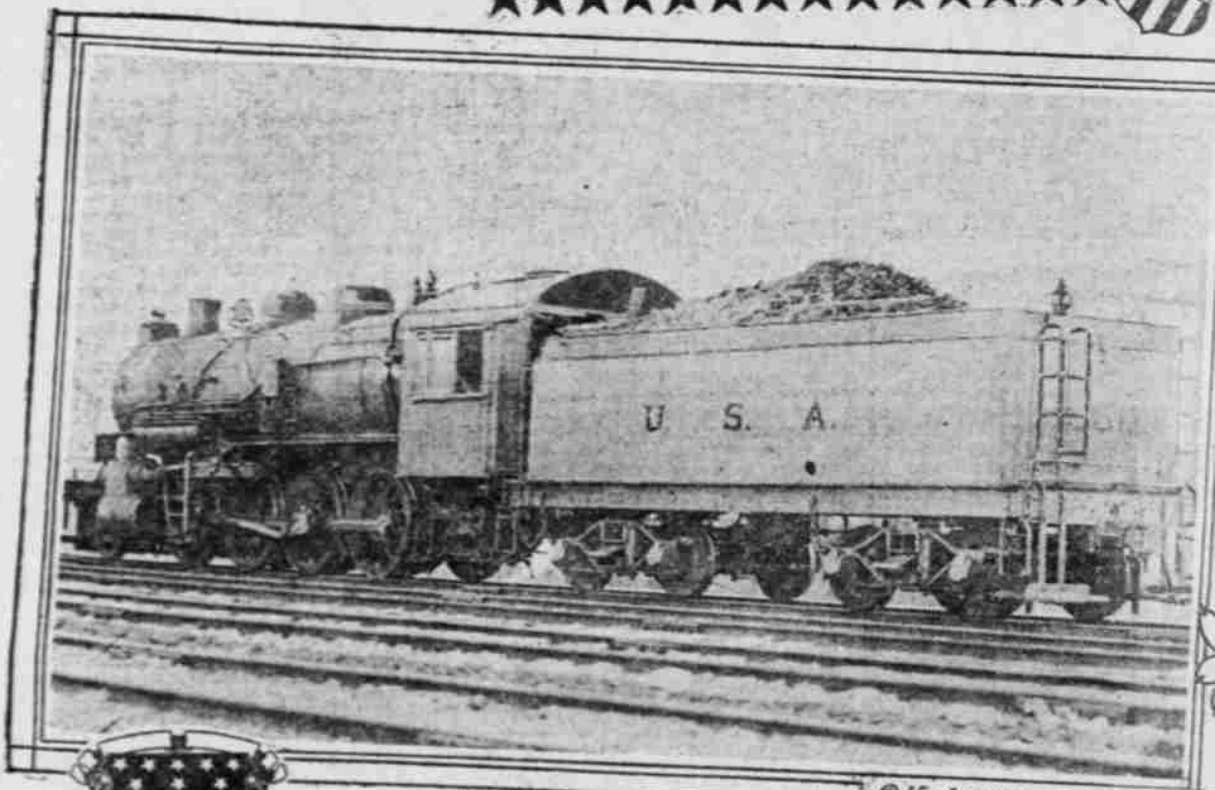
It was not always necessary for the troops of the British forces to drink from wells and to chance making the next watering place in their advance through the Holy Lands over the Sinai Desert. The troops who fought at Gaza drank water from Egypt pumped through an American pipeline and were supplied over a broad-gauge railroad laid clear across the 150 miles of the Sinai Desert. Every ounce of the material for the pipeline, the railroad and the other works came from the United States or Great Britain. The city of Jerusalem was made possible by industry, organization and help of material from the United States.

When the British forces were at the height of their advance in the great Cambrai battle, the East County troops were operating their machine guns from the German second line system which had already been captured. When they reached this position they stopped for a moment in the thick of the battle to get ready a few bites of hot food to give new energy to the men.

In the recent successful British thrust toward Cambrai, the Germans, driven to desperation by the powerful attacks of the "tanks," supported by infantry and cavalry, tried to place every hindrance in the path of the advancing British army. Unmoved by the beauty of the monster trees that graced the roadside in this pretty portion of France, they hewed all of them down to block the road over which the British were advancing.

The work of rushing the bonds for the liberty loans to completion so that the certificates will be soon in the hands of subscribers is going on with great speed in the Government Bureau of Printing and Engraving at Washington. Soon everyone who came across and planked down his dollars for Uncle Sam will have tangible evidence of his patriotism in the form of the green certificates that the Government issues. Important factors in rushing the bonds to completion are the women workers in the printing office.

The Stars and Stripes attain new honors these days in war-torn France, for it is becoming the habit of the French Generals to salute a hero, in the custom of his country, before an American color guard. In awarding decorations to military heroes the French Generals pass down the line of brave men and pin the cross of war upon their breasts, at the same time bestowing the accolade, which is a kiss upon their cheek.



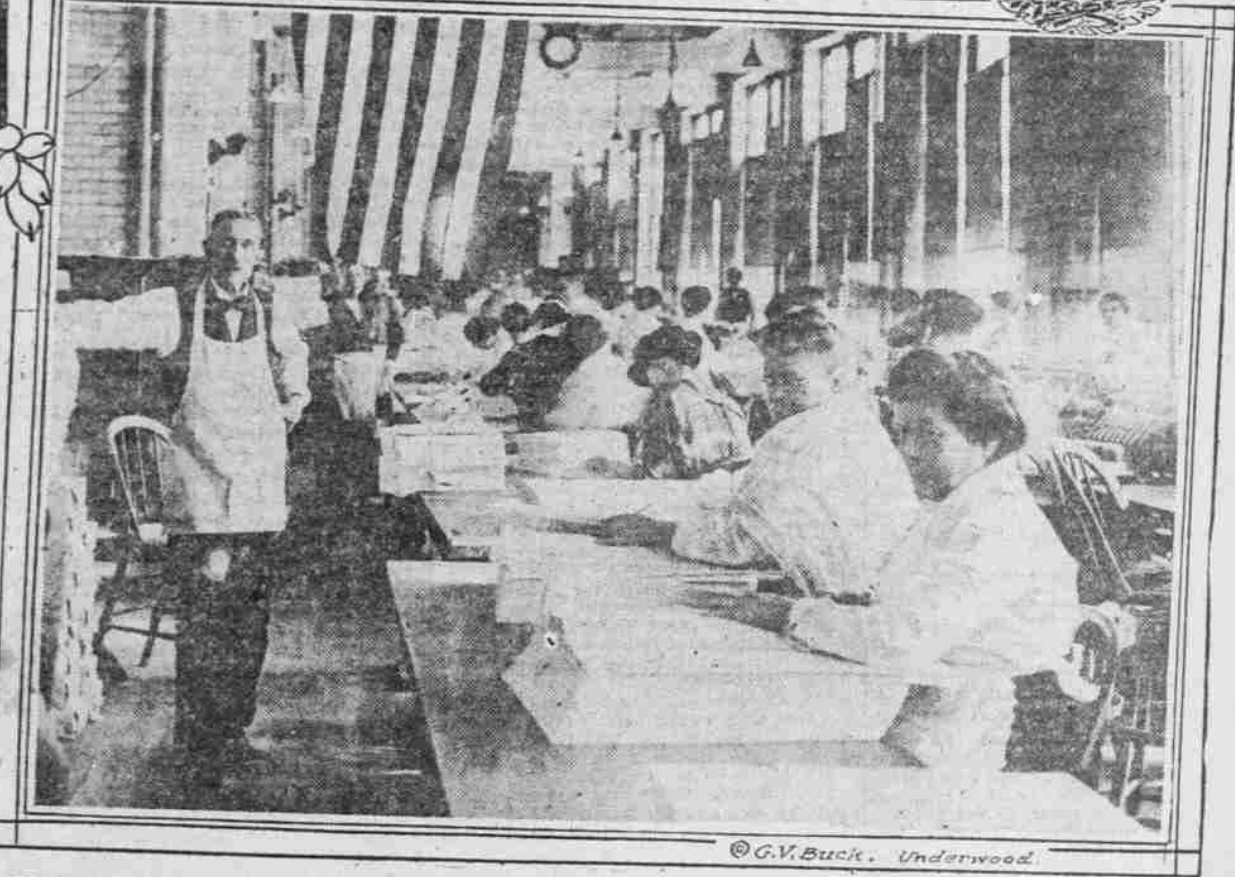
© Underwood.



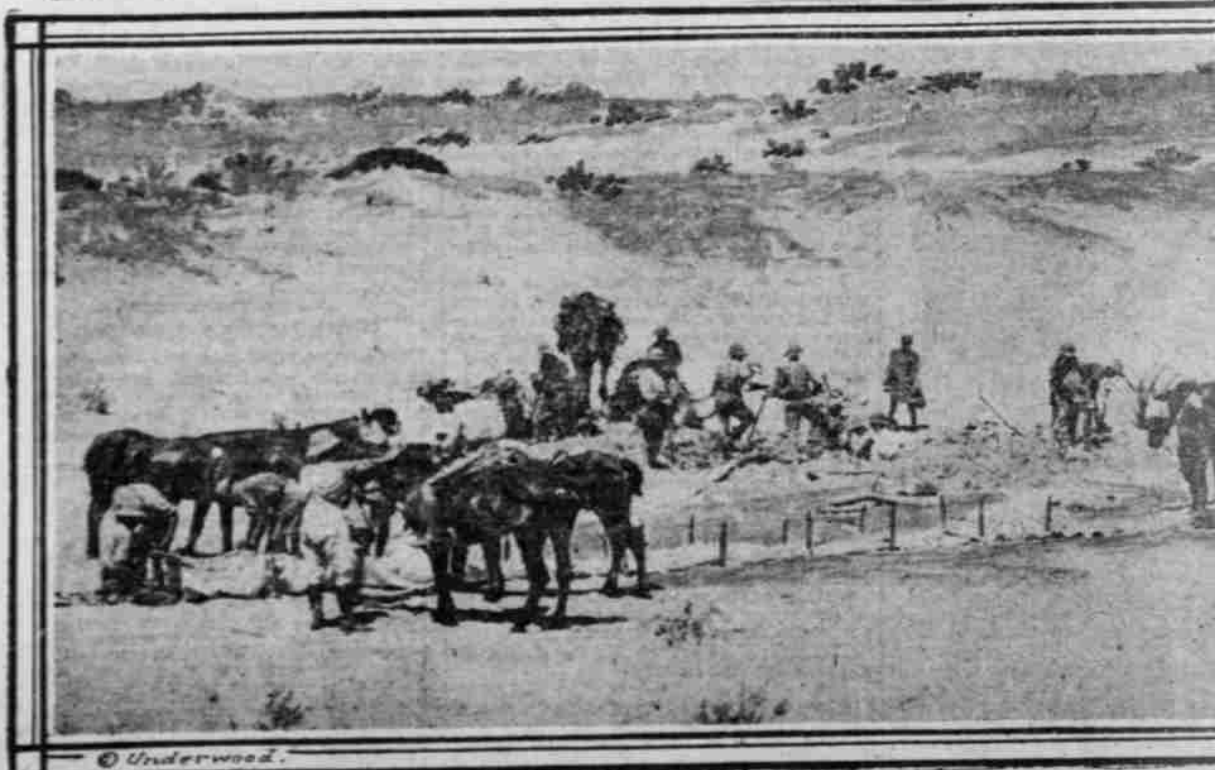
© Underwood.



© Underwood.



© G.V. Buck. Underwood.



© Underwood.



© Committee of Public Information. Underwood.