

# KISSELKAR

## The ALL-YEAR Car

WITH Top and Body gracefully blending—you have a cozy closed coach or a swagger open roofless car as you desire. The ALL-YEAR Top is built-in, not on. No visible fastenings—no rattles.

### Hundred Point Six

The sturdy Kissel-built power-plant, dependable axles and brakes—the special heat-treated frame and resilient springs that have met all Pacific Coast road and grade tests for over a year, are only a few of its Hundred Quality Features.

#### Our Service "Factories"

Each one of our service stations from San Diego to Seattle is a veritable factory in itself so far as complete service and mechanical experts are concerned. Such service counts.

ALL-YEAR models \$1735 up. Open cars \$1295 up—f. o. b. factory.



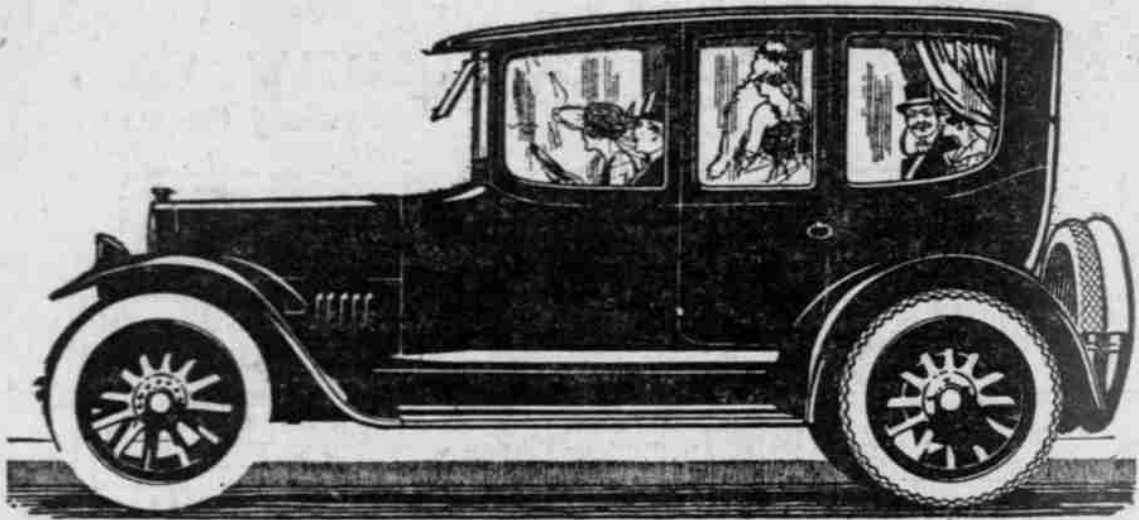
Don't Original Men That Changed the Motoring Habits of a Nation



#### PACIFIC KISSELKAR BRANCH

W. L. Hughson, President  
Portland Branch, Broadway at Davis.  
Oldest Motor Car Dealers on the Coast with branches at

SEATTLE LOS ANGELES OAKLAND  
FRESNO SAN DIEGO SAN FRANCISCO



# HUGE TIRE and ACCESSORY SALE

## 1912—Celebrating Our Splendid New Salesroom—1918

THOUSANDS of high-grade tires at a fraction of their present value. Tires have advanced over FORTY PER CENT the past year and are going higher. We bought and contracted for thousands of tires at 1916 prices and now offer them at AMAZING REDUCTIONS. Four thousand first-grade, best-quality, guaranteed tires offered, subject to prior sale.

| Size     | Make, Style               | Reg. Price | Sale Price | Guarantee  | Size     | Make, Style               | Reg. Price | Sale Price | Guarantee  |
|----------|---------------------------|------------|------------|------------|----------|---------------------------|------------|------------|------------|
| 30x3     | Capitol Plain Clin.       | \$13.65    | \$10.95    | 4000 miles | 34x4     | U. S. Chain SS.           | \$36.65    | \$32.30    | 3500 miles |
| 30x3     | Quaker Plain Clin.        | 19.45      | 13.25      | 5000 miles | 34x4     | Defiance Plain SS.        | 29.15      | 20.80      | 4000 miles |
| 30x3     | Capitol Nonskid Clin.     | 14.30      | 12.80      | 4000 miles | 34x4     | Mohawk Plain SS.          | 35.00      | 23.85      | 5000 miles |
| 30x3 1/2 | Fisk Red Top Nonskid.     | 22.90      | 18.95      | 4000 miles | 34x4     | Quaker Nonskid QD or SS.  | 43.45      | 31.70      | 5000 miles |
| 30x3 1/2 | Quaker Nonskid Clin.      | 27.00      | 18.90      | 5000 miles | 34x4     | Capitol Nonskid QD or SS. | 31.25      | 26.20      | 4000 miles |
| 30x3 1/2 | Capitol Nonskid Clin.     | 18.35      | 13.90      | 4000 miles | 34x4     | Portage Nonskid QD.       | 34.40      | 26.65      | 5000 miles |
| 30x3 1/2 | Quaker Nonskid S. S.      | 32.00      | 21.80      | 5000 miles | 34x4     | Republic Plain QD.        | 32.95      | 22.75      | 4000 miles |
| 32x3 1/2 | Capitol Nonskid SS or QD. | 21.75      | 17.15      | 4000 miles | 34x4     | Republic Stagard SS.      | 38.50      | 31.40      | 5000 miles |
| 32x3 1/2 | Capitol Plain QD.         | 20.80      | 16.75      | 4000 miles | 35x4     | Republic Plain QD or SS.  | 34.45      | 25.90      | 4000 miles |
| 32x3 1/2 | Republic Stagard SS.      | 26.40      | 21.80      | 5000 miles | 35x4     | U. S. Plain QD.           | 36.20      | 25.90      | 3500 miles |
| 32x3 1/2 | Republic Stagard QD.      | 26.40      | 16.95      | 5000 miles | 35x4 1/2 | Republic WM Nonskid QD.   | 44.90      | 32.65      | 3500 miles |
| 32x3 1/2 | Republic WM Nonskid QD.   | 22.25      | 14.10      | 3500 miles | 35x4 1/2 | Republic Plain QD.        | 45.75      | 31.80      | 4000 miles |
| 32x3 1/2 | Republic Plain QD.        | 22.50      | 13.35      | 3500 miles | 35x4 1/2 | Capitol Nonskid QD or SS. | 42.00      | 34.65      | 4000 miles |
| 32x3 1/2 | Portage Nonskid QD.       | 25.90      | 17.15      | 5000 miles | 35x4 1/2 | Quaker Nonskid QD or SS.  | 58.00      | 42.30      | 5000 miles |
| 32x3 1/2 | Mohawk Nonskid QD.        | 28.05      | 16.40      | 5000 miles | 35x4 1/2 | Capitol Nonskid QD or SS. | 43.75      | 35.95      | 4000 miles |
| 34x3 1/2 | Goodrich Plain QD.        | 25.85      | 17.40      | 4000 miles | 35x4 1/2 | Republic Stagard SS.      | 53.60      | 39.85      | 5000 miles |
| 34x3 1/2 | Republic Stagard QD.      | 29.95      | 19.10      | 5000 miles | 35x4 1/2 | Republic Plain QD.        | 45.80      | 29.65      | 4000 miles |
| 34x3 1/2 | Republic WM Nonskid QD.   | 26.10      | 17.85      | 3500 miles | 35x4 1/2 | Republic QD.              | 46.40      | 29.65      | 4000 miles |
| 34x3 1/2 | Quaker Nonskid SS.        | 34.80      | 24.35      | 5000 miles | 35x4 1/2 | Republic WM Nonskid QD.   | 47.80      | 32.15      | 3500 miles |
| 31x4     | Quaker Nonskid Clin.      | 40.25      | 29.35      | 5000 miles | 36x4 1/2 | Republic Stagard QD.      | 54.30      | 34.30      | 5000 miles |
| 31x4     | Republic Stagard Clin.    | 35.20      | 28.15      | 5000 miles | 36x4 1/2 | Quaker Nonskid QD or SS.  | 55.65      | 34.30      | 5000 miles |
| 32x4     | Quaker Nonskid SS.        | 30.05      | 19.65      | 4000 miles | 36x4 1/2 | Capitol Nonskid QD or SS. | 44.45      | 36.25      | 4000 miles |
| 32x4     | Defiance Plain SS.        | 40.25      | 29.95      | 5000 miles | 36x4 1/2 | Portage Nonskid QD.       | 53.35      | 34.30      | 5000 miles |
| 32x4     | Republic Plain QD.        | 32.25      | 21.15      | 4000 miles | 37x4 1/2 | Republic Plain QD or SS.  | 48.35      | 34.25      | 4000 miles |
| 33x4     | Republic WM Nonskid QD.   | 33.60      | 21.85      | 3500 miles | 37x4 1/2 | Quaker NS.                | 60.70      | 44.25      | 5000 miles |
| 33x4     | Republic Stagard QD.      | 37.70      | 26.45      | 5000 miles | 35x5     | Goodrich Plain SS.        | 46.90      | 35.25      | 3500 miles |
| 33x4     | Capitol Nonskid QD or SS. | 30.40      | 25.25      | 4000 miles | 35x5     | Republic Plain QD.        | 53.65      | 36.25      | 5000 miles |
| 33x4     | Capitol Plain QD or SS.   | 29.15      | 24.25      | 4000 miles | 35x5     | Mohawk Nonskid SS.        | 70.35      | 46.15      | 5000 miles |
| 33x4     | Quaker Nonskid QD or SS.  | 42.65      | 31.10      | 5000 miles | 36x5     | United States Plain QD.   | 58.25      | 35.40      | 3500 miles |
| 33x4     | Fisk Red Top SS.          | 35.85      | 29.80      | 4000 miles | 37x5     | Capitol Nonskid QD or SS. | 52.95      | 39.80      | 4000 miles |
| 34x4     | Fisk Red Top SS.          | 36.75      | 32.30      | 4000 miles | 37x5     | Quaker Nonskid QD.        | 69.30      | 50.55      | 5000 miles |
|          |                           |            |            |            | 37x5     | Goodrich Plain QD.        | 49.65      | 30.90      | 3500 miles |
|          |                           |            |            |            | 37x5     | National Highway QD.      | 61.10      | 32.45      | 5000 miles |
|          |                           |            |            |            | 37x5     | Republic Plain QD.        | 56.85      | 32.00      | 4000 miles |

### Two Thousand Selected Factory Seconds

OUR STOCK OF THESE CONSISTS IN PART OF FISK, GOODYEAR, McGRAW, FEDERAL, FIRESTONE, DIAMOND, LEE, CHAMPION, HIGHWAY, ETC., ETC.

They are new, fresh stock tires that were slightly blemished at time of manufacture. Offered with or without guarantee.

| Size     | Plain   | Nonskid | Size     | Plain   | Nonskid | Size     | Plain   | Nonskid |
|----------|---------|---------|----------|---------|---------|----------|---------|---------|
| 28x3     | \$ 8.55 | \$ 9.70 | 36x3 1/2 | \$15.60 | \$21.15 | 34x4 1/2 | \$24.40 | \$26.40 |
| 30x3     | 8.95    | 9.95    | 31x4     | 17.85   | 18.95   | 35x4 1/2 | 25.30   | 28.65   |
| 30x3 1/2 | 11.75   | 12.90   | 32x4     | 17.95   | 19.25   | 36x4 1/2 | 25.95   | 29.05   |
| 31x3 1/2 | 12.50   | 13.35   | 33x4     | 18.30   | 20.65   | 37x4 1/2 | 26.65   | 29.95   |
| 32x3 1/2 | 13.35   | 14.10   | 34x4     | 19.85   | 21.25   | 35x5     | 29.85   | 32.25   |
| 34x3 1/2 | 14.95   | 15.65   | 35x4     | 20.35   | 22.10   | 36x5     | 30.35   | 32.55   |
|          |         |         | 36x4     | 20.85   | 22.75   | 37x5     | 30.90   | 33.05   |

### Your Golden Opportunity While They Last—New, Fresh Stock

STANDARD MAKE RED INNER TUBES, MANUFACTURED BY ONE OF THE BIG RELIABLE COMPANIES

| Size     | Price  | Size     | Price  | Size     | Price  |
|----------|--------|----------|--------|----------|--------|
| 28x3     | \$2.05 | 32x4     | \$3.35 | 35x4 1/2 | \$4.30 |
| 30x3     | 2.00   | 33x4     | 3.40   | 36x4 1/2 | 4.40   |
| 30x3 1/2 | 2.50   | 34x4     | 3.55   | 37x4 1/2 | 4.50   |
| 32x3 1/2 | 2.65   | 35x4     | 3.65   | 36x5     | 5.30   |
| 31x4     | 3.25   | 36x4     | 3.75   | 37x5     | 5.40   |
|          |        | 34x4 1/2 | 4.20   |          |        |

### PEERLESS PURE GUM TUBES

TWO-YEAR GUARANTEE—HAND-MADE—PURE FLOATING STOCK. THIS WONDERFUL INNER TUBE HAS GREATER TENSILE STRENGTH, MORE ELASTICITY, AND THEREFORE LONGER LIFE AND MILEAGE THAN ANY OTHER TUBE MADE. MADE BY THE LARGEST TUBE MANUFACTURERS IN THE WORLD.

| Size       | Gray   | Red    | Size     | Gray   | Red    | Size     | Gray   | Red    |
|------------|--------|--------|----------|--------|--------|----------|--------|--------|
| 28x3 M. C. | \$2.18 | \$2.52 | 36x3 1/2 | \$3.04 | \$3.62 | 34x4 1/2 | \$4.60 | \$5.44 |
| 28x3       | 2.18   | 2.52   | 31x4     | 3.48   | 4.27   | 35x4 1/2 | 4.73   | 5.55   |
| 30x3       | 2.33   | 2.61   | 32x4     | 3.60   | 4.40   | 36x4 1/2 | 4.86   | 5.74   |
| 30x3 1/2   | 2.64   | 3.22   | 33x4     | 3.73   | 4.48   | 37x4 1/2 | 4.98   | 5.96   |
| 31x3 1/2   | 2.78   | 3.35   | 34x4     | 3.85   | 4.59   | 35x5     | 5.66   | 6.71   |
| 32x3 1/2   | 2.78   | 3.35   | 35x4     | 3.98   | 4.70   | 36x5     | 5.78   | 6.86   |
| 34x3 1/2   | 2.90   | 3.50   | 36x4     | 4.12   | 4.82   | 37x5     | 5.93   | 6.99   |

### SUPPLIES—SUPPLIES—SUPPLIES

SPECIALLY PRICED FOR THIS SALE ONLY

- (Limited Quantity to Each Customer)
- MICHELIN MASTIC or PEERLESS MASTIC. Reg. price, 50c; SALE PRICE, 32c
  - FORD RUBBER MATS. Reg. price, \$1.50; SALE PRICE, .84c
  - WOVEN STEEL RUNNING BOARD MATS. Reg. price, \$1.50; SALE PRICE, .50c
  - REAR SIGHT MIRRORS. Sale Price, \$1.25
  - CHAMPION "X" SPARK PLUGS. Reg. price, \$1.25; sale price, .47c
  - FORD GASOLINE GAUGES. \$1 value, sale price, .38c
  - STEWART SPEEDOMETERS. Reg. price, \$1.25; sale price, .56c
  - HOOVER TIRE LOCK CABLES. Reg. price, \$1.25; sale price, .56c
  - FRICITION TAPE. 2-oz. roll, reg. price, \$1.25; sale price, .17c
  - ELECTRIC LAMPS. 11-inch HEAD LAMPS, per pair, sale price, \$3.05
  - WINDSHIELD CLEANERS. Reg. price, \$1.50; sale price, .90c
  - HYDROMETERS. The 1 1/2 kind, sale price, each, .45c
  - GOLDEN WEST UNIONALS. A one-piece khaki garment of exceptional value. Sale price, \$2.69
  - MAHVEL JUNIOR VULCANIZERS. Reg. price, \$1; sale price, .78c
  - FORD FAN BELTS. Oak tan, best grade, each, .25c
  - CEMENT. Standard make, in either patching or vulcanizing, quarter pint cans, each, \$1.10
  - HORNS (Hand Operated). "Spartan" type, reg. price, \$1.03
  - HORNS (Electric Motor Driven). "Samson Jr." type, reg. price, \$4.80
  - CLOCKS—Rim wind and set, 3 styles. Reg. price, \$1; sale price, \$3.95

### NEW TRUCK IS COMING

NORTHWEST AUTO COMPANY ADDS BETHLEHEM LINE

Deal Is Closed by Fred W. Vogler While in East, and Three Carloads Are Now on the Way.

The 2 1/2-ton Bethlehem has a 144-inch wheelbase and 4 by 4 1/2 motor, governed to 15 miles an hour. In obtaining the Bethlehem for this territory, the Northwest Auto Company has obtained a moderate priced truck to round out its commercial department, which includes also the Ames worm driven Ford attachment, 1909-pound Stewart delivery with express body, Reo 3/4-ton speed wagon and 2-ton

truck, Indiana 1, 2, 3 1/2 and 5-ton worm driven truck and the Duplex four-wheel drive. Three carloads of Bethlehems are on the way, and the first carload may arrive in time for the show.

**FITTING WHEEL SPINDLE HARD**  
Best Way to Slip Bearing Into Place Explained.

In replacing a bearing on a front wheel spindle for which it is a tight fit, the car owner sometimes slips the bearing on the taper end of the spindle and then uses the wheel as a hammer to force it home, wheel and bearing sliding into position on the spindle at the same time. This is poor business as the strain on the bearing may break the hardened shoulder of the inner race, which is meant to withstand wear but not shocks of this kind. The best way of accomplishing this work is to slip a short length of pipe over the spindle, the inner end resting against

the inner race of the bearing. By hammering the outer end of the pipe carefully the bearing will slip into place without trouble.

#### NATIONAL PARKS TO BE OPEN

Many Easterners Expected to Motor Here in Touring Season.

Information reached Portland this week from Secretary of the Interior Lane announcing that the National parks would be open as usual this year and that the department would continue to invite and encourage tourist travel to the National Parks. This information sounded mighty good to W. D. Albright, Northwest manager of the B. F. Goodrich Rubber Company. As railroad traffic will be somewhat handicapped during the touring or motoring season, those visiting the National Parks will use their machines in making the trip and he is confident that a large number of Easterners will motor to the Northwest.



With the Ford Sedan it's different—here is an enclosed motor car with refined appointments and luxurious furnishings—for an exceedingly small price, \$695 f. o. b. Detroit. The Ford Sedan is very pleasing to women who drive, as it brings the conveniences and safety of an electric car, with such a charming difference in first cost and after-maintenance. It is more flexible in management than the electric and possesses other advantages as an all-the-year car. Large doors, sliding plate glass windows, with the latest type of ventilating windshield—silk curtains and heavy cloth upholstered seats make the Ford Sedan, for five passengers, the most desirable of family cars. For all social events, for the theater, taking the children to school, for touring it is really ideal, serving just as efficiently in the Winter as it does in the Summer. And with all these excellencies is the standard Ford chassis that means years of satisfactory service.

Any of the authorized Ford dealers listed below will be pleased to demonstrate the Sedan for you, book your order for reasonably quick delivery and pledge you the certainty of efficient "after service" when such becomes necessary.

- Talbot & Casey, Inc. Grand Ave. at E. Ankeny
- Rushlight & Penny Broadway at E. Third St.
- Pacific KisselKar Branch Broadway at Davis
- Francis Motor Car Co. East 13th and Hawthorne
- Palace Garage Co. 12th and Stark Sts.
- Robinson Smith Co. Sixth and Madison Sts.

Make the acquaintance of the Ford dealer near you.

# Autoparts Supply Co.

Portland 80-82 Sixth Street—Corner Oak  
Seattle Tacoma Spokane  
Phone Broadway 5508