

**NEW HUDSON HERE;  
LINES ARE SNAPPY**

Much Style Added to Touring Car by Slight Lowering of Body Lines.

**SILENT MOTOR FEATURE**

C. L. Boss Automobile Company, Hudson Distributor for Oregon, Receives First of New 1918 Super-Six Models.

It's remarkable what a difference even a slight change in body design can make in the general appearance of a car. The new Hudson Super-Six touring car model, the first carload shipment of which arrived last week for the C. L. Boss Automobile Company, Oregon distributors for the Hudson, is a case in point.

By a slight lowering of the body line somewhat after the manner of the Hudson speedster model, which has been so popular here, a world of style has been added to the appearance of the touring car. And it actually looks 500 pounds lighter.

As a matter of fact, the weight of the 1918 model is virtually the same as that of the 1917 car, 3164 pounds just as unloaded at the depot, and only 3222 pounds all ready for the road with extra tire, gasoline and oil. But instead of looking much heavier than it really is, as was the case with the former model, the new Hudson looks its lightness.

In short, it is now a car of especially snappy and attractive lines, as well as one of grand performance.

**Motor Runs Silently.**

In addition to the lowering of the body line, a bevel edge has been carried around from the cowl, which itself comes on the new model with rounded instead of square corners.

Another noteworthy feature of the new Hudson is its silence of operation. The motor of the 1918 model can hardly be heard. There is a deep purr and nothing louder as the driver steps on the accelerator pedal and the car responds with a bound.

Several mechanical changes have been embodied in the new chassis, though some of them is radical. Nor has any radical changes been made in the carburetor or motor. Probably the most important change in the new touring car model ever that of 1917 is the addition of a thermo-siphon control of the water circulation. This in no way affects the shutter, which is still hand-operated, but it does maintain the water circulation at the proper temperature and in conjunction with the shutter gives complete water control.

**Luxurious Springs Used.**

Attendant with this, the heated air intake has been removed and in its place is a plate permitting the openings at the side of the bonnet to be closed. When the front shutters are closed the engine is thus in a closed chamber containing air of the necessary warmth.

The new Hudson touring car model seats seven passengers. The rear seat accommodates three persons without crowding. The use of Marshall cushion springs in the upholstery makes it even more comfortable than its predecessor. There has been a slight flattening of the car springs, making for greater riding comfort.

The car is finished in a slightly lighter blue color than was the 1917 model. Mr. Boss has several carloads of the new model on the way. They cannot arrive soon enough to suit him, for the arrival of the first of the new cars has resulted in many inquiries.

**MOTOR DELIVERY IS URGED**

**Council of National Defense Finds It Affects Big Saving.**

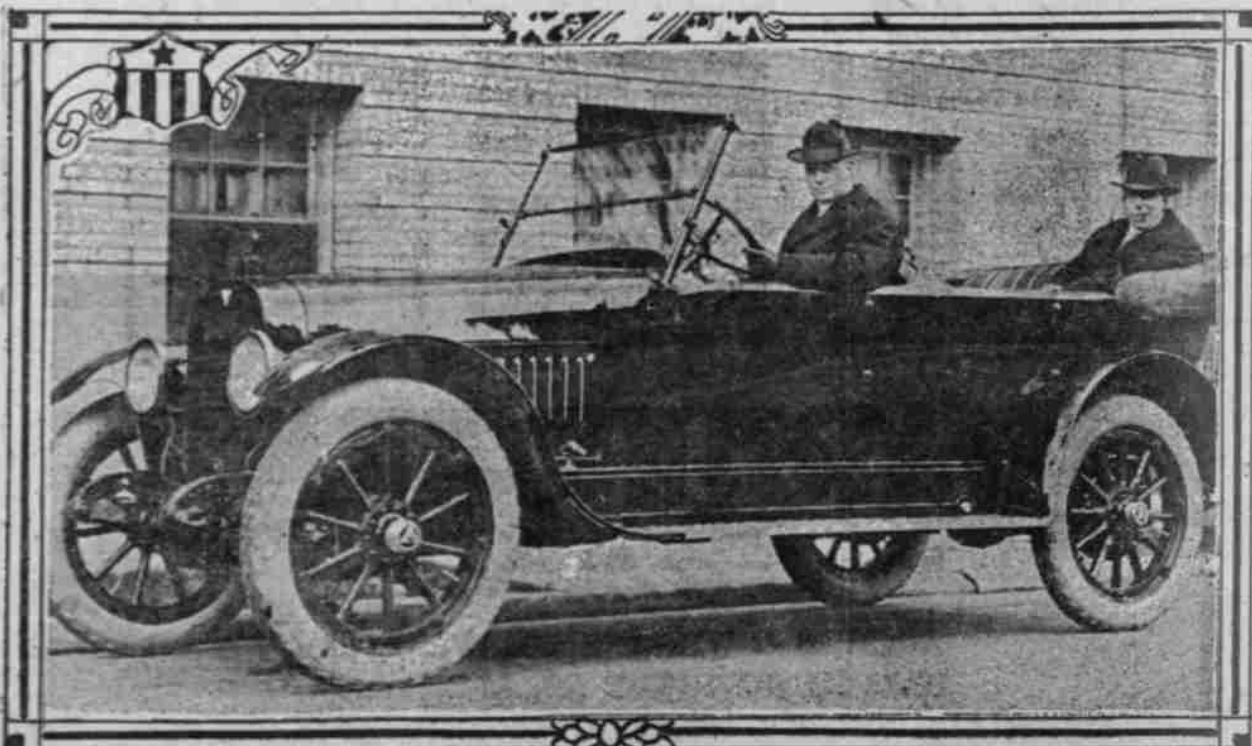
A careful study of 21 co-operative delivery systems made by the Commercial Economy Board of the Council of National Defense, shows that they are operated by a total of 297 men as compared with 453 men required for the individual systems replaced and that the service to the customer is practically everywhere as good as formerly and in some places better. Motor delivery wagons are used extensively in these co-operative services.

After a conference by the board with representatives of the 43 State Councils of Defense, agents are to visit all the smaller cities and towns and urge adoption of this system.

**Motorcycles in Army.**

Provision Motorcycle Company No. 1, which was stationed along the border during the Mexican troubles, is now with the United States forces somewhere close to the battle lines in France. This company still flies a flag presented by the Goodyear Tire & Rubber Company, to be used as a squad flag to distinguish them from others. It is a silk flag upon which is shown the likeness of a motorcycle wheel, with a wingfoot—the symbol of speed and service—emblazoned across the hub. All the machines in this company left our shores equipped with Goodyear tires.

**SLIGHT CHANGE IN BODY LINES GREATLY IMPROVES APPEARANCE OF 1918 HUDSON TOURING CAR.**



Latest Hudson Touring Car Model, Received Last Week by C. L. Boss Automobile Company, Hudson Distributors in This Territory. Mr. Boss is at the Wheel.

**MAXWELL**

Most Miles per Gallon • Most Miles on Tires

**When Business Needs You Most,  
—Conserve Your Energy**

When success means straining nerve force to the utmost  
—when minutes given to your affairs are precious  
—when your strength is the driving force of your store or factory or farm  
—then you must have a motor car.

A motor car saves valuable time—saves your vitality—during business hours.

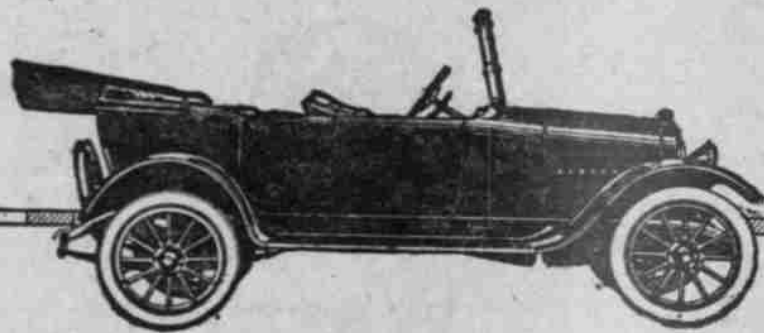
And—after business hours—provides recreation and vigor—giving outdoor enjoyment that helps you in the daily battle.

The economy, durability, and mechanical perfection of the standardized Maxwell car have been proved so conclusively they are now accepted facts.

The Maxwell is the car without a peer for the man who is working under full steam.

Touring Car \$745; Roadster \$745; Berline \$1095  
Sedan with wire wheels \$1195. F. O. B. Detroit

**C. L. Boss Automobile Co.**  
615-17 Washington Street



**VOGLER TELLS OF SHOW**

PRESIDENT OF NORTHWEST AUTO COMPANY WRITES HOME.

Owing to War There Are Few Radical Changes in Design and Few New Models, He Says.

General first impressions of the New York show have been received by the Northwest Auto Company from Fred W. Vogler, its president, who went East to attend the show, which began January 8.

"The conditions," writes Mr. Vogler, "under which the industry is working are materially different from those at the time of previous shows. From an engineering standpoint, technical progress is the main motive and the times are not propitious for any radical changes. There are very few new models, as the uncertainty of the future in the way of necessary equipment to make radical changes in production on a commercial basis has discouraged experimental work and extensive investment in new machines. On the other hand, there are the usual detailed improvements on practically every model on exhibition.

"These improvements are the results partly of observation and advice of distributors and service stations, partly of conclusions drawn from the observations of salesmen, and partly from the engineering department.

"Smooth flowing stream lines have about reached their limit and no further change in body design is apparent.

"It is impossible to say at this time just what the conditions will be during the coming year, but it is certain that standard, proved cars will bring a premium and that reliable trucks especially adapted for agriculture, mining and logging purposes in particular and for business purposes in general will be ordered months and perhaps a year or two in advance to assure deliveries. Even now there is talk of 'priority rights' being utilized by those in charge of production needed directly and indirectly for war purposes."

**Keeping Out the Rain.**

With the slanting type of windshields water is likely to leak through the slight opening between the two panes of glass when a heavy storm is

encountered. This trouble may be obviated by making one of the panes overlap the other, which, of course, calls for the fitting of a new upper or lower half.

**REAL GAS GOOD MOTOR FUEL**

English Help Overcome Gasoline Shortage in Unusual Way.

American motorists will view with interest the ways in which their English brethren meet the gasoline shortage which is so serious with them, says Milestones. They have found that but a slight modification of the motor is necessary to fit it to use ordinary illuminating gas instead of gasoline. With gasoline hovering about the dollar

**HERE'S A NEW ONE—AUTO THIEVES HURRY CAL.**

Somewhat out of the ordinary in making away with stolen cars was the method of Springfield, Mass., thieves, who buried a car in a lonely wooded spot not far from the state line. Boys passing discovered what appeared to be a newly made grave and notified the police, who, when they dug a short time, uncovered a windshield. The car bore a Massachusetts license and had been reported stolen in Springfield.

**Tire Girls Drill.**

The girls of the Goodyear Tire & Rubber Company branch of the Y. W. C. A., Akron, O., have perfected a military organization. Although Uncle Sam will hardly permit them to emulate the example of their brave sisters in the Russian Battalion of Death, in actual military service, their determination to keep up with the spirit of the times led them to ask for military instruction. The girls drill each week under the instruction of the Goodyear drillmaster.

**AUTO SHOW "GOES BIG"**

NEW MODELS AT NEW YORK CENTER OF INTEREST.

Dealers and Buyers Alike Realize That Time Is One for Optimism and Normal Business.

Telegraphic reports received by G. A. Kissel, president of the Kissel Motor Car Co., from the New York Kissel distributor, indicate that the 1918 New York Automobile Show, now on, will prove a wallow that business pessimists will never get over.

It reads: "Never has such genuine interest and enthusiasm been displayed at any of the previous National Automobile shows before. Not only was the old show spirit stronger in evidence, but the atmosphere was one of supreme confidence. Everybody acted as if it was his show and turned on the 'pep' to prove it.

"The outstanding feature at the opening was the optimism displayed not only by prospective buyers, but by visiting dealers. The air was charged with expectancy, as if everybody, realizing the part the automobile is playing in the life and work of the Nation, looked eagerly forward to the new models—as if they expected still greater improvements that would insure added utility, efficiency and economy.

"Nor were they disappointed. The automobile industry has again come to the front with a bang. The manufacturer—big men used to doing big things in a big way, men who recognize that anything can be done if hard enough efforts are expended, have so perfected the new models that without a doubt they represent the highest development the automobile has ever been brought to.

"No wonder the visitors were enthusiastic. With such evidence of 'Business as usual' with such proof that the auto industry is going right ahead, pessimists had only one thing to do—disappear for good or turn optimists.

"The dealers realize also that now is the time for optimism and that with the new models and co-operation of the industry, never before have they been offered such an opportunity to become a part and parcel of their local business world. By so doing they will render their communities a service that will prove vital to the business and industrial supremacy of their community and state."

**MOTOR TRUCKS TO BE USED**

Mail Delivery Between Big Cities Will Be Made by Auto.

Bids have been called for by the Postoffice Department for motor trucks to be used in postal service between New York and Philadelphia, between New York and Hartford, Conn., and between Detroit and Toledo. This is an



**Overland**  
\$1240

**The Thrift Car**

An office-on-wheels for many professional men—  
An indispensable asset for many business men—  
As much a necessity as it is a satisfaction for many women—room for five!  
With it you are master of bad weather instead of mastered by it.

Appearance, Performance, Comfort, Service and Price

Light Four Model or Small Sedan  
See Us Today—See First Price subject to change without notice

**The Overland Pacific, Inc.**  
Broadway 3535 Broadway and Davis St.

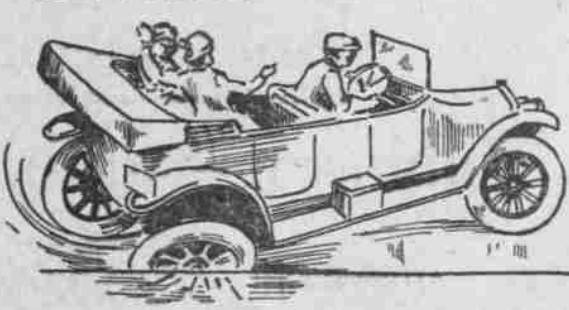
**COWLITZ COUNTY ROAD OPEN**

Flooded Highway Passable Again Between Kelso and Castle Rock.

KELSO, Wash., Jan. 5.—(Special.)—Between Kelso and Castle Rock the west side highway, over which Pacific Highway travel is being detoured while the latter route is blocked by road construction, is open to travel after having been closed for a week by high water in the Cowlitz River.

The Pacific Highway will be blocked to auto travel all winter two miles south of Castle Rock, and tourists must take the detour road from Kelso to Castle Rock. This route leaves the Pacific Highway at the Rockwood Hotel corner at Kelso, crossing the bridge to the west side and continuing up the river to Castle Rock, where the Cow-

**SWISH—**



**A SKID—Ends in a Broken Wheel**

What now?  
Is the local dealer able to supply you with a new wheel, so you can be on your way in a few hours?  
Or  
Must you have one made and be out of the use of the car for several days, to say nothing of expense?  
We carry a \$40,000 stock of repair parts to protect owners of

**Mitchell**  
CARS

in just such emergencies  
Mitchell, Lewis & Staver Co.  
Broadway at Oak E. Morrison and First

**LEXINGTON SERVICE**

To correct statements to the contrary, the Brunn Motor Car Co. announces that COMPLETE SERVICE FACILITIES for Lexington cars are provided here through LOUIS BUNTZEL and F. V. FORBES, at 110 Thirteenth Street, who are equipped for all service requirements.

**BRUNN MOTOR CAR CO.**  
444 Stark Street