

LIBERTY GIRLS PARADE TO BE BIG FEATURE

School Boys and Girls Will Take Part in Marching Event Wednesday.

2700 WILL BE IN LINE

Formation of National Emblem by 120 Little Maids to Be Striking. Rainbow Girls Will Give Dancing Drill.

Children—2700 boys and girls in a marching host... will form one of the central events of the Rose Festival...

The children's parade ever has been one of the first features of the festival in public favor... Robert Krohn, who has directed the preparatory training for the spectacle this season...

Liberty Girls Will Lead. The parade will be led by the Liberty Girls, 125 in number, from 12 different schools in costumes of the National colors and wearing liberty caps...

High Schools to Take Part. Through this festival parade will be somewhat shorter than those of previous years, fully as many children will participate and the discrepancy is accounted for by the fact that this is the first occasion on which Portland High Schools have appeared in the parade...

PAPERS REFUSED ALIENS. Three Germans, Seeking Citizenship, Told to Wait End of War.

EUGENE, Or., June 9.—(Special.)—Of a class of 16 applicants for citizenship examined in the Lane County Circuit Court...

Work of installing the \$25,000 pipe organ in the public Auditorium will be started tomorrow.

OFFICIAL PROGRAMME OF THE ELEVENTH ANNUAL ROSE FESTIVAL. Wednesday, June 13. 7 A. M. A Festival Center—Sunrise gun, raising of flag...

Crab race—Boy Scouts, James E. Brock, casting contest—Anglers and Fishermen's Club, Dr. E. C. McFarland.

7 A. M. Festival Center—Sunrise gun, raising of flag; National salute by Oregon Field Artillery detachment, Battery A.

10 A. M. Queen Nina and party leave Portland Hotel for Multnomah Field, route of parade from court in Portland Hotel south on Sixth to Yamhill, west on Yamhill to Chapman, south on Chapman to Salmon, thence to field.

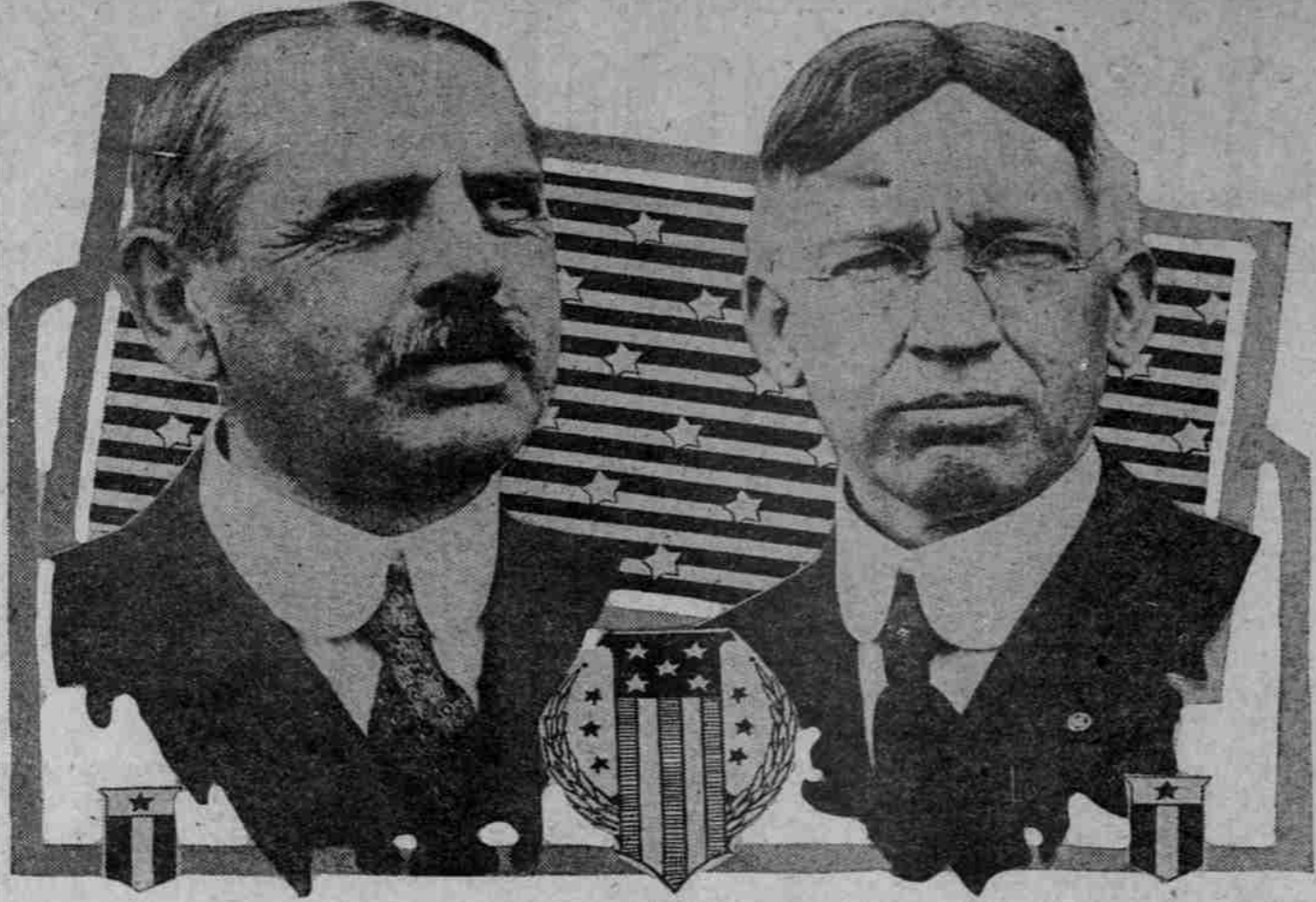
13:30 P. M.—Queen Nina and party leave Portland Hotel for Multnomah Field, route of parade from court in Portland Hotel south on Sixth to Yamhill, west on Yamhill to Chapman, south on Chapman to Salmon, thence to field.

1:30 P. M.—Queen Nina and party leave Portland Hotel for Multnomah Field, route of parade from court in Portland Hotel south on Sixth to Yamhill, west on Yamhill to Chapman, south on Chapman to Salmon, thence to field.

1:30 P. M.—Queen Nina and party leave Portland Hotel for Multnomah Field, route of parade from court in Portland Hotel south on Sixth to Yamhill, west on Yamhill to Chapman, south on Chapman to Salmon, thence to field.

1:30 P. M.—Queen Nina and party leave Portland Hotel for Multnomah Field, route of parade from court in Portland Hotel south on Sixth to Yamhill, west on Yamhill to Chapman, south on Chapman to Salmon, thence to field.

PROMOTIONS IN UNITED STATES WEATHER BUREAU SERVICE GIVE PORTLAND NEW OFFICIAL AND CREATE ONE DISTRICT ON PACIFIC COAST.



Left—Edward A. Beala, Transferred to San Francisco as Coast Head. Right—Alfred H. Thieszen, Assigned to Portland from Salt Lake.

It was 17 years ago, March 17, that Edward A. Beala came to Portland as inspector in the Weather Bureau and made the first forecast for this district, and tonight he will issue his last forecast as to prospective Northwest conditions...

Head of School Tells Students They Can Do as Well as Those Who Have Preceded Them. Summer Course Offers.

To mark the closing of the school year at Hill Military Academy, special exercises were held Friday afternoon in the assembly room.

Blaze on East Ninth Street Originates Near Box of Matches. Fire, which started at 3:30 o'clock yesterday morning in a grocery store at 833 East Ninth street North, did about \$350 damage before it was finally placed under control.

Suit Is Brought for Damages. C. L. Hadley filed suit yesterday against the Portland Railway, Light & Power Co. for \$225 damages, alleged to have been received in a collision between his automobile and a streetcar April 9.

Crab race—Boy Scouts, James E. Brock, casting contest—Anglers and Fishermen's Club, Dr. E. C. McFarland. Exhibition drill and jumping contest—Portland Hunt Club, A. M. Griley, Festival director, in charge.

7 A. M. Festival Center—Sunrise gun, raising of flag; National salute by Oregon Field Artillery detachment, Battery A.

10 A. M. Queen Nina and party leave Portland Hotel for Multnomah Field, route of parade from court in Portland Hotel south on Sixth to Yamhill, west on Yamhill to Chapman, south on Chapman to Salmon, thence to field.

13:30 P. M.—Queen Nina and party leave Portland Hotel for Multnomah Field, route of parade from court in Portland Hotel south on Sixth to Yamhill, west on Yamhill to Chapman, south on Chapman to Salmon, thence to field.

1:30 P. M.—Queen Nina and party leave Portland Hotel for Multnomah Field, route of parade from court in Portland Hotel south on Sixth to Yamhill, west on Yamhill to Chapman, south on Chapman to Salmon, thence to field.

1:30 P. M.—Queen Nina and party leave Portland Hotel for Multnomah Field, route of parade from court in Portland Hotel south on Sixth to Yamhill, west on Yamhill to Chapman, south on Chapman to Salmon, thence to field.

1:30 P. M.—Queen Nina and party leave Portland Hotel for Multnomah Field, route of parade from court in Portland Hotel south on Sixth to Yamhill, west on Yamhill to Chapman, south on Chapman to Salmon, thence to field.

LOOKS BEAUTIFUL FESTIVAL ARTISTRY

Myriads of Roses in Portland Promised to Transform Streets into Bowers.

LIGHTING WILL BE FEATURE

Backward Season Will Make Roses Less Plentiful Than Heretofore. Programme to Start Wednesday Is Fully Completed.

HIGHLIGHTS IN PORTLAND'S ELEVENTH ANNUAL ROSE FESTIVAL. Wednesday, June 13—National salute by Battery A opens Festival.

10 A. M.—Children's parade, East Side. 11:30 P. M.—Unveiling Goddess of Liberty, Festival Center, by President Wilson, in Washington, D. C.

Thursday, June 14—Grand parade in scores of organizations represented. 2 P. M.—Grand patriotic pageant forms at Fourteenth and Yamhill streets.

Friday, June 15—Grand floral parade, miles of roses and wild flowers. 2 P. M.—Grand floral parade forms at Fourteenth and Yamhill streets.

7:30 P. M.—Great community sing, 4000 trained voices, Park blocks. 8:30 P. M.—Royal Rosarians' ball, Cottillon Hall.

Ready for the Rose Festival! So says every director of Oregon's great floral festa, just a few days away.

National Salute to Be Fired. Wednesday, the opening day, will blink at the thunder of the National salute, 21 guns fired by Battery A.

Roses Are Less Plentiful. There is no gainsaying the fact that the backward season will serve to make roses less plentiful than in years of yore.

War Comes Close Home to Them. "The people of the East appear to be more alive to the real situation than Westerners. The reason is probably that they are more nearly in the war atmosphere."

Business in East Improved. Mr. Wortman reports that in certain ways business is very much improved in Eastern circles.

Grand Stand Tickets. Grand stand tickets for human rosette parade to be held at 10 A. M. Wednesday, June 15, may be purchased at Lennon's 303 Morrison.

Junior Naval Reserves Recruiting. Recruiting offices have been opened by the Oregon Junior Naval Reserve in the same office with the naval recruiting station in the Dekum building.

Woman Wins \$35 in \$1200 Suit. Florence Fletcher won a verdict for \$35 in her case against I. E. Staples, which was tried before a jury in Circuit Judge Tucker's court last week.

\$2 1/2 Gold Piece of 1833 Found. LEBANON, Or., June 9.—(Special.)—A two and one-half dollar gold piece was found this week by I. H. Peterson, while he was working in his garden in this city.

Beautiful Walnut STEGER & SONS \$285.00

Baby Grand Piano HALLET & DAVIS \$485.00

Beautiful Oak LESTER PIANO \$250.00

Practically New MAHOAGANY CASE PACKARD PIANO \$265.00

New 88-Note PLAYER PIANO \$450.00

DECKER & SON GOOD CONDITION. TERMS EILERS—BROADWAY AT ALDER

PIANOLA \$190.00

LEROY PIANO \$200.00

PIANOS \$250.00 Each

Walnut Case Hobart M. Cable \$265.00

Walnut Case FARRAND \$210.00

EILERS—BROADWAY AT ALDER

Do It Now Cut This Out and Mail WITH \$5.00 TO SIDNEY G. LATHROP, EXECUTIVE SECRETARY, ABINGTON BLDG.

EAST SEES MORE WAR People of Atlantic Seaboard Alive to Situation.

BURDEN SURE TO BE HEAVY H. C. Wortman, Returned From Business Trip, Reports Contrast of Viewpoints—West Not Less Loyal, but Farther Away.

PERUNA household Helper

Hotel Putler SEATTLE

Hotel Putler SEATTLE

Hotel Putler SEATTLE

Hotel Putler SEATTLE

Hotel Putler SEATTLE

Hotel Putler SEATTLE

Hotel Putler SEATTLE