

MANY CARS OFFERED BUYERS ALL WAY FROM \$1500 TO \$2000

Buick, Mitchell, Chandler, Haynes, Paige, Oakland, Kissel, Velle, Hudson, Cole and National All Have at Least One Model Within Limit.

IF YOU are going to step from booth to booth at this year's automobile show looking for a motor car that sells within \$250 on either side of \$1750, it might be well for you to study the price chart published in supplement with this article.

Assuming that your financial status dictates that you can spend as much as \$1500, but no more than \$2000, your requirements will be satisfied in one or other of the booths maintained by the Howard Auto Company, dealers in the Buick, Mitchell, Lewis & Staver Company, Gerlinger Motor Car Company, Chandler distributors, H. L. Mann Motor Car Company, Haynes dealers, the Oakland Auto Sales Company, the Pacific Kissel-Kar Branch, the D. C. Warren Motor Car Company, Velle dealers, Boss & Peake, Hudson distributors, the Paige Motor Sales Company, the Northwest Auto Company, Cole distributors, or the Manley Auto Company, distributors of the National.

The Buick six, a seven-passenger model known as the E49, may not arrive in Portland until April 1, according to information given out at the branch offices of the Howard Auto Company last week.

MITCHELL

Mitchell, Lewis & Staver Co.

The 1917 Mitchell six is a larger, roomier and considerably more beautiful car than the previous issue. Mechanically changes are confined to minor refinements and such increases in strength and size of parts as was made necessary by the two-inch increase in wheelbase. There are a large number of body types offered, all having the high and narrow radiator and smooth sloping hood.

Two little items which indicate the extent to which comfort has been considered are the glove compartment in the instrument board and the tonneau light in the back of the forward seat. Within the instrument board there is fitted a new compartment in which small traveling requisites may be carried and which is locked by the same key that operates the ignition lock.

The makers have announced four new enclosed cars, a cabriolet, sedan, limousine and coupe. The sedan is of the Springfield type and is finished upholstered and equipped in limousine style. The cabriolet is another four-season model and is a three-seater, an auxiliary seat for the fourth passenger.

CHANDLER

Gerlinger Motor Car Co.

Closed bodies are late features of the six-cylinder Chandler production. The four-passenger convertible coupe is of the Springfield design, with the same seating arrangement as the Chandler roadster, which is a clover-leaf pattern with a rear seat accommodating two. There are five inches more room in the coupe seats, as the baggage compartments have been removed. The convertible sedan is also of the Springfield type. The interior finish is simple yet effective, a feature being a five-inch mahogany panel across the center of the door and around the compartment. Four color options are offered.

HAYNES

H. L. Mann Motor Car Co.

For the coming season Haynes will offer two chassis types which carry

AUTOS WHICH SELL IN PORTLAND FOR MORE THAN \$1500 AND LESS THAN \$2000.

Buick E 49, seven-passenger six	\$1535
Mitchell standard six	1540
Chandler standard models	1545
Haynes five-passenger	1600
Paige Stratford model	1645
Haines, four and seven-passenger	1700
Oakland eight-cylinder models	1735
Kissel five-passenger sedan and coupe	1785
Velle, seven-passenger	1800
Hudson Super Six	1800
Paige, Brooklands and four-passenger roadster	1845
Cole standard models	1850
National, smaller model	1925

either the six-cylinder or 12-cylinder motor. The latest announcement in the new offering is a four-passenger roadster which will be fitted on the 127-inch wheelbase only. The rear seat in this model is 44 inches wide and the distance from the front of the rear to the back of the front seat is 30 1/2 inches. With a seat width of 17 inches, one will understand there is plenty of leg room in this rear compartment. The model 35 six-cylinder car has 121-inch wheelbase, and the model 37 a 127-inch wheelbase.

Besides the four-passenger roadster there are five and seven-passenger touring cars and a very attractive Springfield type touring sedan with removable side panels.

PAIGE

Paige Motor Sales Co.

The latest feature in the Paige products is a convertible two and four-passenger roadster which was announced for the first time at the New York show. What is to be known as the Brooklands four-passenger roadster will sell for \$1945 at Portland. The new body of this car contains unique and ingenious features of design. By an unique assembly the rear compartment may be entirely decked over when desired.

HUDSON

Boss & Peake Auto Co.

The Hudson Super-Six is being continued without mechanical change and the bodies also remain the same. The most recent announcement concerning the Hudson centers around the new radiator shutter, which may be mounted on any Hudson Super-Six at extra cost. This shutter is operated from the driver's compartment and is designed to regulate the water temperature for most efficient operation regardless of the atmospheric temperature. It also provides the means of heating the motor quickly when starting in cold weather.

OAKLAND

Oakland Auto Sales Co.

The model 50 eight-cylinder Oakland will be continued for another season with practically no changes. This car

is distinguished by its massive appearance and consequent roominess, its great power in proportion to the weight and its long springs which contribute materially to easier riding qualities. It carries the characteristic Oakland V-type radiator which has been used by this company for a number of years.

High lights in the specifications of this car are as follows: Aluminum pistons, underslung rear springs, three-quarter elliptic, 53 1/2 inches long, 34 by 4 1/2-inch tires all around, coach green finish, with wheels and chassis black as standard, and 127-inch wheelbase.

COLE

Northwest Auto Co.

The Cole line for 1917 will include four models and one chassis—a Cole-Springfield Touring, a Cole-Springfield Touring, a seven-passenger touring and a four-passenger Tuxedo roadster. Few changes have been made in the Cole eight chassis since the company began the production of eight. A wide solid truss midway between the steering wheel and rear axle takes the place of the torque and radius rods, drive being taken from the rear springs. The crankshaft in the Cole motor is counterbalanced by electrically welded weights which largely prevent whipping of the shaft or slapping of pistons.

NATIONAL SIX

Manley Auto Co.

The National Highway Six is being continued without material change, with prices somewhat higher. The car is characterized by its long, low lines, which has been a National feature for a number of years. In fact, the National company was one of the pioneers in the low-hung, straight-line type of body.

CHANGE IN LAW SOUGHT

PROTECTION FOR AUTOMOBILE MEN AIM OF B. C. SHELDON.

Proposed Amendment Would Provide That Chattel Mortgages Be Effective in Any County in State.

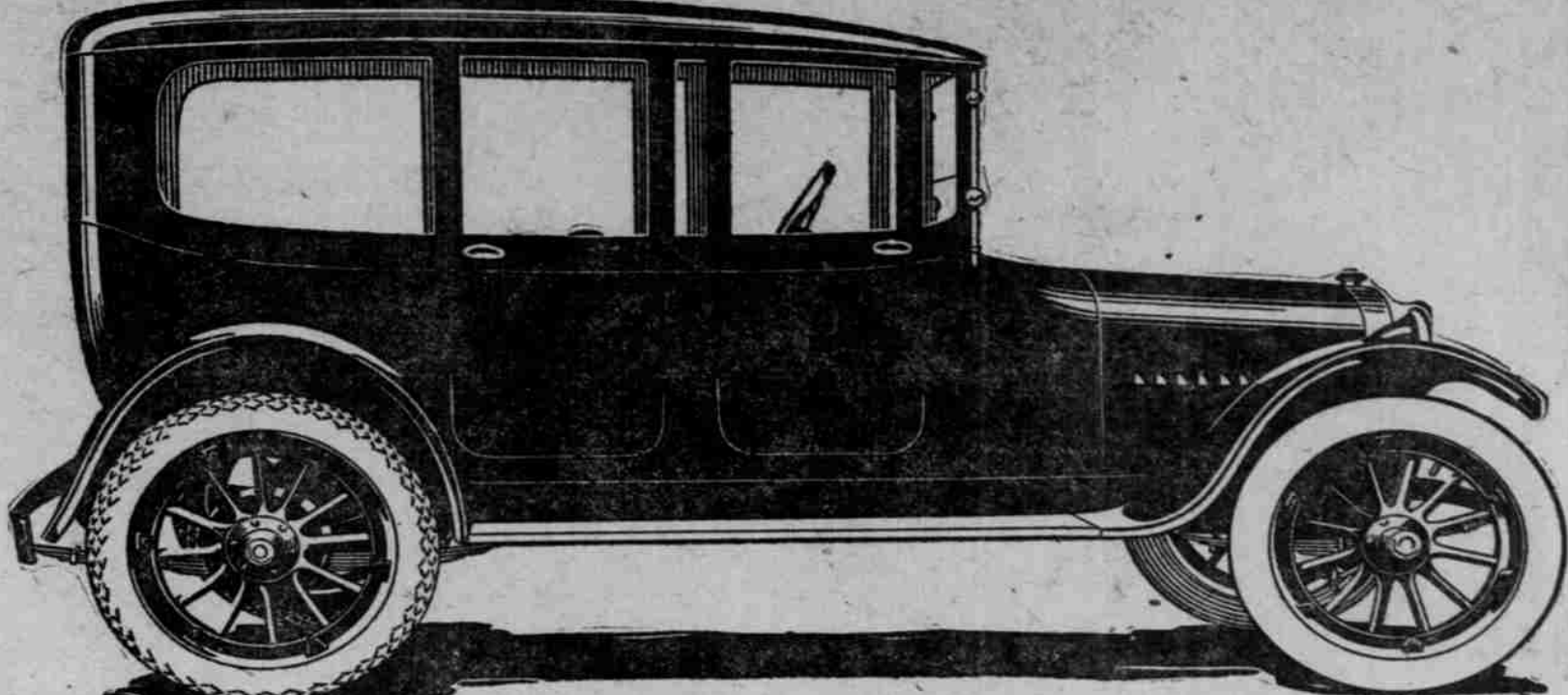
With the intention of amending the chattel mortgage law respecting automobiles, Benjamin C. Sheldon, Representative from Jackson County, has introduced a bill in the Legislature, known as House Bill 52, which is designed to prevent fraud, yet which would work no hardship except on the person attempting to commit the fraud.

As the law now stands, if an automobile is mortgaged and then taken from the county where the mortgage was given and remains in another county for 30 days, it can be sold and the holder of the mortgage will have no recourse, but must lose his lien on the automobile. This provision of the law invites fraud, and such fraud has been worked in a number of cases in this state.

The proposed amendment provides that a chattel mortgage on automobiles may be recorded in the Secretary of State's office and thereby become effective and enforceable in any county in the state.

"With such a large number of automobiles being sold on part payment, and with a chattel mortgage taken for the unpaid balance, it becomes impossible for the dealer to watch all such machines and make sure that they are not spirited away into another county for the 30-day period," says Mr. Sheldon.

Oakland



MODEL "34" SEDAN \$1125.00, PORTLAND

Why Model 34 Is the Sensible Six

At the Auto Show look at the Oakland Six from any angle, study it as a complete machine, or as a thing of many separate units—whatever your viewpoint, this car appeals to your common sense. It satisfies your desire for good investment, for power, comfort and performance, for attractive lines and distinctive style—and it does all this at a cost which good judgment tells you is a sensible price, \$975.00 at Portland.

- The new Oakland model is sensible because it is a Six.
- It is sensible because it is a powerful car.
- It is sensible because it has a high speed, overhead valve motor.
- It is sensible because it is a light-weight car.
- It is sensible because it is a very roomy car.
- It is sensible because of its wonderful riding qualities.
- It is sensible because of its low cost of operation.
- It is sensible because it has "made good."
- Lastly, it is sensible because of its price.

Oakland Auto Sales Co. Retail 522-24 Alder Street PORTLAND
Oregon Oakland Motors Co. Wholesale

DORT

ALL LOW PRICED CARS can easily be called "the best." "Equal to any car at any price."

But the man who pays the money, and who will investigate the Dort, will find that it has the stuff in it—a sincere structure of strength—of quality — of backbone — of energy — all beneath its beauty and comfort.

The Westinghouse Electric Starter and light system is but one of its many refinements.

The Dort has made good for thousands under every condition of service—under every test of economy and under every comparison of first cost.

The Line Complete

Northwest Auto Co.

Factory Distributors

Broadway at Couch Street — Portland Oregon

F.W. Vogler, pres. — C.M. Menzies, sales mgr.

Local representatives wanted in unoccupied territory

REO TRUCKS

A big percentage of trucks are Reos: Ask our truckman why.

The Auto Show is a convenient time and place to make direct comparisons.

And actual test is a most convincing proof.

Take advantage of both opportunities.