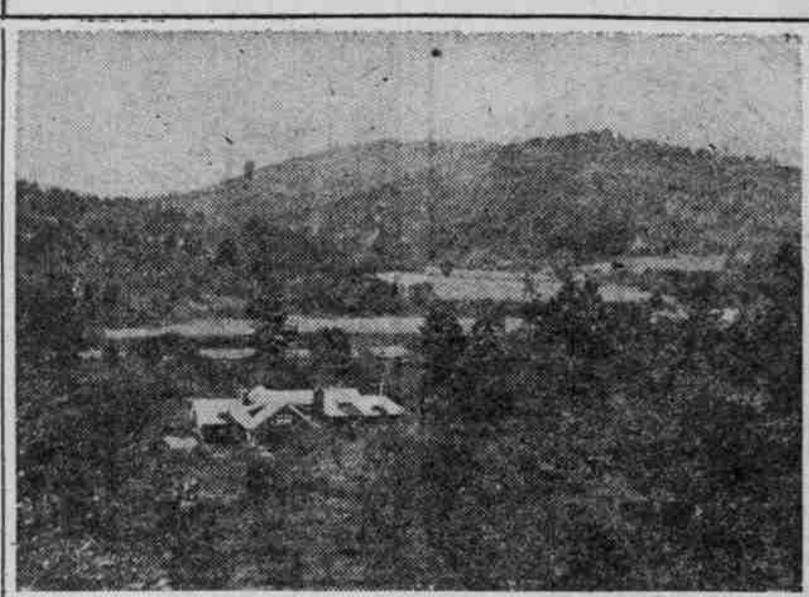


**RURAL HOME IN FOREST OF DOUGLAS COUNTY IS DELIGHT**

Hughes House Fits Appropriately Into Charming Landscape Without Disturbing in Least Harmony of Surroundings.



Hughes House, Mount Alto Ranch, Douglas County.



The House Offers No Jarring Note.

THE Hughes house, probably the best known house in Douglas County, stands in a small open spot along the Umpqua River, 20 miles east of Roseburg, near Glide postoffice. It is on the other side of the river from the county road and from Glide. It is connected with the road by a private ferry and with the postoffice by a cable. Aloof from the few distractions of a singularly quiet community, this dwelling, though modern and comparatively new, seems to be as homely and as much in place as an Indian tepee. Trim and fresh and up-to-date, yet it fits into natural surroundings that are distinctly unchanged. A few yards to the right or left grow Douglas County trees, just as they sprang from seeds, a heterogeneous company of firs, oaks, maples and laurels. Fifty yards in front is the Umpqua River, with a trail winding down to it through the yard of native grass and native flowers, unaltered from the time of Indian pilgrimages, yet not tall or rank or uneven. The unrestricted seasons work their magic changes, but this bungalow offers no jarring note. It is as much (Continued on Page 11.)



The physical changes in a woman from youth to old age are fraught with many dangers. The young girl, the young wife and mother, the middle aged woman struggling with the trials of "change of life," all have new physical conditions to contend with that only the hardiest withstand. The majority fall victims to some distressing feminine disorder that makes life a misery. When a woman feels that some disease peculiar to her sex is developing in her system she should immediately profit by the experience of others and begin taking

**Lydia E. Pinkham's Vegetable Compound**

For three generations this famous remedy has been helping sick women  
**Just as it helped these three women.**

**Girlhood.**

Taunton, Mass.—"I had pains in both sides and every month I had to stay at home from work and suffer a long time. One day a woman came to our house and asked my mother why I was suffering. Mother told her that I suffered every month and she said, 'Why don't you buy a bottle of Lydia E. Pinkham's Vegetable Compound?' My mother bought it and the next month I was so well that I worked all the month without staying at home a day. I am in good health now, and have told lots of girls about it."—Miss CLARICE MORIN, 22 Russell St., Taunton, Mass.

If all young women who are not well could see in our library the great file of letters like above they would be convinced our medicine would help them.

**Womanhood.**

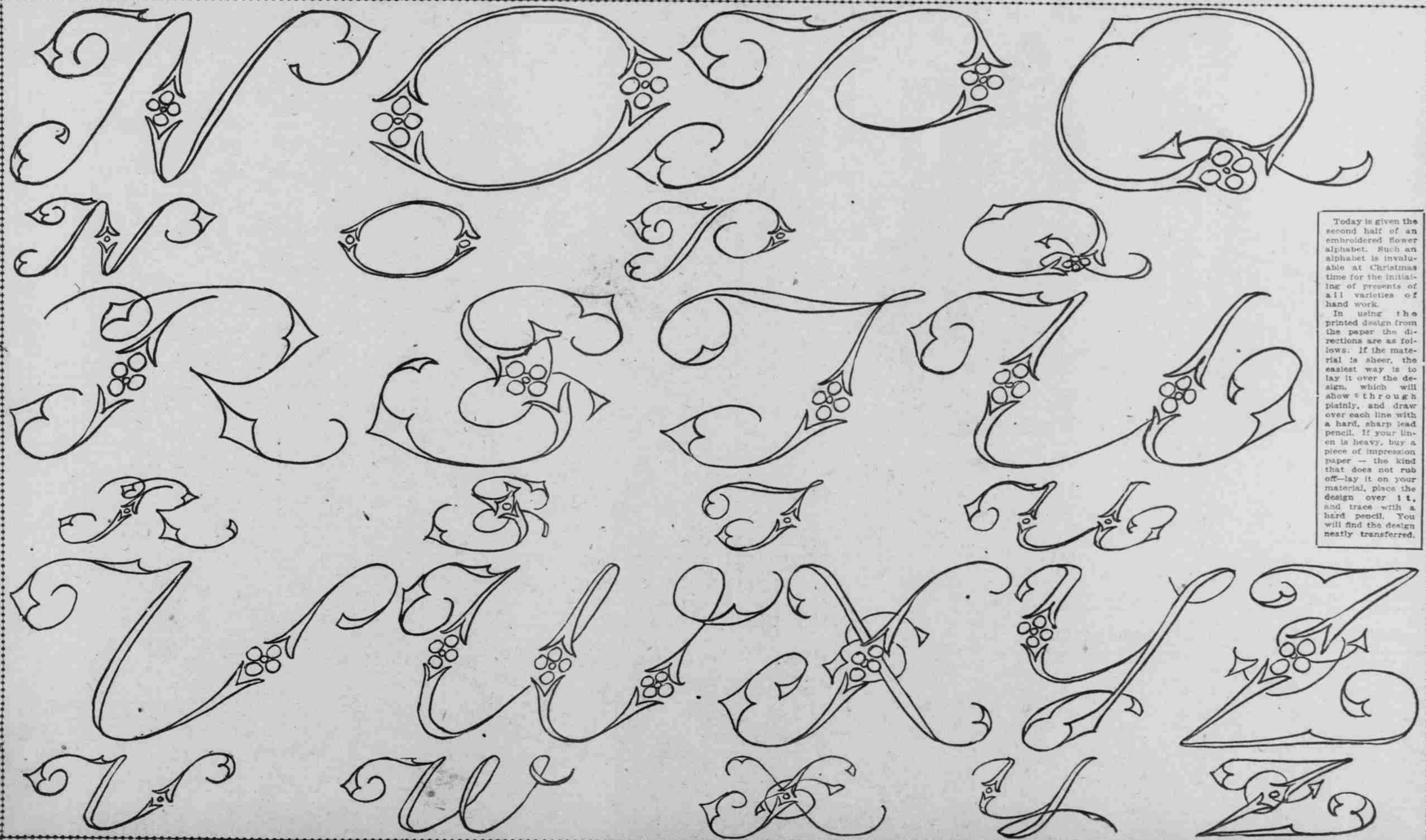
Miller's Falls, Mass.—"Doctors said I had displacement very badly and I would have to have an operation. I had a soreness in both sides and a pulling sensation in my right side. I could not do much work the pain was so bad. I was also troubled with irregularity and other weaknesses. My blood was poor. We had been married four years and had no children. After using Lydia E. Pinkham's Vegetable Compound and Blood Purifier I became well and strong and was saved from an operation. We are now the parents of a big baby girl, and I praise your remedies to others and give you permission to publish my letter."—Mrs. JOSEPH GUILBAULT, Jr., Bridge St., Miller's Falls, Mass.

**Change of Life.**

Englewood, Ill.—"While going through the Change of Life I suffered with headaches, nervousness, flashes of heat, and I suffered so much I did not know what I was doing at times. I spent \$1900 on doctors and not one did me any good. One day a lady called at my house and said she had been as sick as I was at one time, and Lydia E. Pinkham's Vegetable Compound made her well, so I took it and now I am just as well as I ever was. I cannot understand why women don't see how much pain and suffering they would escape by taking your medicine. I cannot praise it enough for it saved my life and kept me from the Insane Hospital."—Mrs. E. SHELTON, 5657 S. Halsted St., Englewood, Ill.

The great number of unsolicited letters like the above prove that Lydia E. Pinkham's Vegetable Compound is all that it is claimed to be. Lydia E. Pinkham Medicine Co., Lynn, Mass.

**SECOND HALF OF THE EMBROIDERED FLOWER ALPHABET**



Today is given the second half of an embroidered flower alphabet. Such an alphabet is invaluable at Christmas time for the initialing of presents of all varieties of hand work. In using the printed design from the paper the directions are as follows: If the material is sheer, the easiest way is to lay it over the design, which will show through plainly, and draw over each line with a hard, sharp lead pencil. If your linen is heavy, buy a piece of impression paper — the kind that does not rub off — lay it on your material, place the design over it, and trace with a hard pencil. You will find the design neatly transferred.