

MR. MYRICK TALKS ON RURAL CREDITS

Workings of New Law Shown From Viewpoint of Both Borrower and Investor.

GREAT SAVING PREDICTED

Bankers, Business Men and Farmers Hear Agricultural Economist Explain Advantages to Be Gained by Tillers of Soil.

To acquaint the farmers and the small investors of the country with the mutual benefits that they are to derive from the new Federal farm loan system, Herbert Myrick, well-known publisher, author, economist and widely-known exponent of improved agriculture on the farm, addressed a big gathering of bankers, business men and farmers at the Chamber of Commerce last night.

Mr. Myrick, who, for nearly a quarter of a century, has advocated an adequate system of rural credits under direction of either the state or Federal government or both, arrived in Portland yesterday afternoon.

Mr. Myrick's talk at the Chamber last night explained in intimate detail the purposes and the workings of the new Federal law. He showed by illustrative examples how the statute is expected to work—how it benefits the farmer, and how it benefits the investor.

In approaching his subject Mr. Myrick laid frequent emphasis on the difference in cost to the farmer of securing land loans under the old system of farm mortgages and under the new system.

"By the old method, so long in vogue," said he, "the cost of mortgage money to American farmers, including commissions and renewal charges, now averages about 8 1/2 per cent. This means that the average farmer now pays what is equal to \$35 yearly for the use of \$1000. In 23 years these annual charges of \$35 amount to \$805.

"Therefore, to pay interest, including commissions and renewal charges, upon a farm mortgage of \$1000, and to have the principal of the debt paid off in full at the end of 23 years costs, by the old method, \$805.

"The new system enables the borrower to pay his debt almost 'without feeling it'.

"Total payments yearly almost one-fifth less than by the old method, not only meet the interest on the principal, but also gradually discharge the principal also.

"The actual savings by the new over the old way is some \$5000 on each \$1000 borrowed for 23 years.

"The shorter the loan, the less the saving, but the debt is paid. Thereafter, all the interest accrues to the farm owner."

Mr. Myrick explained that the new law provides that any farmer, or any other who wish to borrow money for a long period of years may form a National farm loan association. Each farmer must pay in \$5 for his share, and must pay each \$100 he wishes to borrow. The association invests that money in shares of the Federal land bank for its district.

To start it, the Government temporarily advances so much of the land bank's \$700,000 capital as is not paid in by associations, individuals, corporations or states. Only shares owned by member associations and by the Government can vote.

Following the inspection of the plant, the regular monthly meeting of the association will be held in the Bridal Veil association hall. At this meeting important manufacturing, marketing and association problems will come up for discussion and final action.

At the conclusion of the business session the lumbermen will take automobiles and proceed on the Columbia Highway east as far as Bonneville, affording visiting millmen from other states an opportunity to view the practical scenery from Bridal Veil to Multnomah Falls.

WELL-KNOWN AUTHORITY ON RURAL CREDITS WHO SPOKE AT THE CHAMBER OF COMMERCE LAST NIGHT AND LOCAL COMMITTEE WHO RECEIVED HIM.



Left to right: W.L. Boise, John E. Cronan, Herbert Myrick, Frank S. Myers.

MILLMEN TO MEET

Bridal Veil Plant Will Be Place of Gathering.

LUMBER PROBLEMS TOPIC

At Conclusion of Sessions Members of West Coast Lumbermen's Association Will View Columbia Highway Scenery.

An important meeting of the North Pacific district of the West Coast Lumbermen's Association will be held in Portland Friday of this week.

The meeting, in fact, will be held at Bridal Veil, on the Columbia River Highway, about 32 miles east of Portland, but in speaking of lumber production Bridal Veil always is included in the Portland district.

The Bridal Veil plant is operated by water power and includes in its extraordinary equipment a water turbine 35 inches in diameter, turning over 730 revolutions per minute, with 2500 horse-power.

The Bridal Veil plant is somewhat unique in the lumber industry, being operated entirely by water power, with more than a dozen machines directly connected in such a manner as to eliminate the use of belting, chains or other transmission.

This meeting at Bridal Veil has been arranged in accordance with the association's policy of getting away from routine work and encouraging practical demonstrations of important industrial problems.

The programme for the session calls for the lumbermen to assemble at the Benson Hotel Friday morning, August 25.

At 11:30 automobiles will start with the entire party to Bridal Veil. Luncheon will be served at the plant, after which an inspection of its water power equipments and machinery will be made.

Problems to be discussed. Following the inspection of the plant, the regular monthly meeting of the association will be held in the Bridal Veil association hall.

At the conclusion of the business session the lumbermen will take automobiles and proceed on the Columbia Highway east as far as Bonneville, affording visiting millmen from other states an opportunity to view the practical scenery from Bridal Veil to Multnomah Falls.

JIMMY DUNNE HAS MOVED

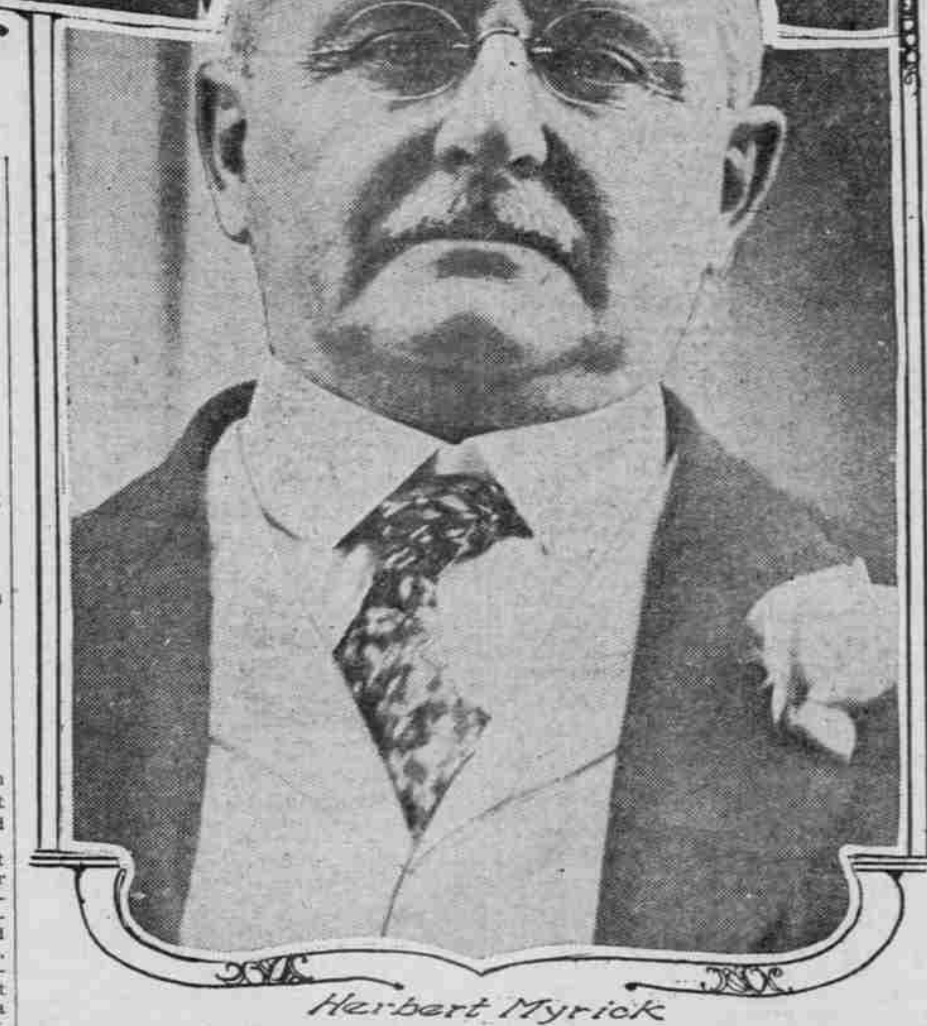
Clothier Opens Large Emporium in Eilers Building.

Jimmy Dunn, well-known dealer in men's suits and overcoats, for the last

COUPLE MARRIED IN NEWBERG WILL RESIDE IN PENDLETON.



NEWBERG, Or., Aug. 19.—(Special).—Miss Zelma Jones, daughter of Mrs. Anna Jones, and Virgil D. Fendall were married Thursday at the home of the bride's mother by Rev. P. C. Stannard, pastor of the Baptist Church of Newberg.



Herbert Myrick

PEACE FILM THRILLS

Wonderful Ince Production Opens Week's Run.

MUSIC ADDS TO STRENGTH

Critic Says Humanity's 'Greatest Emotions and Aspirations Are Thrown Into Sharpest Contrast in Finished Artistry.

PASTOR TO STAY LONGER

REV. M. P. FIKES WILL REMAIN AT WHITE TEMPLE SIX MONTHS

Action of Church Board Is Believed by Some to Forecast Call for Former Detroit Minister.

The White Temple is assured of a pastor until May 1, 1917, at least. Rev. Maurice Penfield Fikes, formerly of Detroit who has been supplying the pulpit for the month of August, has been asked to remain for a period of six months beginning November 1, and has consented.

The agreement reached appears to many of the members as a forerunner of one that will mean the calling of Dr. Fikes as permanent pastor. He will go East September 2 to fill an engagement made several months ago and will return to Portland the latter part of October.

On September 1 Dr. Fikes will give a lecture for the benefit of the Women's Society of the White Temple. His subject will be "The Man for Tomorrow."

INCREASE OF SALARY

Do you think you can get along on my salary of \$14 a week?

Why, certainly, doves. As an allowance now pays only gives me \$10.

PERSONAL MENTION.

R. H. Graves, of Corvallis, is at the Seaside.

John Harper, of Dallas, is at the Perkins.

George H. Baird, of Tacoma, is at the Imperial.

A. T. Bailey, of Spokane, is at the Portland.

F. H. Libbey, of Sheridan, is at the Nortonia.

H. D. Vaughn, of Kalama, Wash., is at the Eaton.

L. A. Jones, of Gervais, is registered at the Oregon.

J. Coblentz, of Astoria, is registered at the Corvallis.

W. H. Lassiter, of La Center, Wash., is at the Imperial.

H. A. Frick, of Boardman, registered at the Eaton yesterday.

Mr. and Mrs. S. W. Harrison, of Seaside, are at the Cornelius.

Mr. and Mrs. W. E. Stacker, of Tacoma, are at the Portland.

S. Miles, of Brownsville, registered at the Corvallis yesterday.

Mr. and Mrs. M. W. Isle, of Clarkston, Wash., are at the Eaton.

Mrs. Mary C. Miller, of Helena, Mont., is registered at the Portland.

Mr. and Mrs. A. D. Sommers, of Salem, are registered at the Cornelius.

Glenn D. Hart, of New York, was an arrival at the Imperial yesterday.

C. H. Haecker, of San Francisco, registered at the Imperial yesterday.

Lois Fenwick, of Helena, Mont., registered at the Portland yesterday.

SANTA FE RAILWAY INSURES EMPLOYEES

Two-Year Trial System in Force With Expense Borne by Company.

RANGE IS \$250 TO \$3000

President Ripley Sends Letter of Explanation to Local Officers Who Are Instructed to Send in Names of Beneficiaries.

Every employe of the Atchison, Topeka & Santa Fe railroad is to have his life insured at the expense of the company under a plan that became effective July 1.

The innovation was originated by President E. P. Ripley himself and is the result of many years' careful study by Mr. Ripley and other high officials of the company.

Employees of the Santa Fe's Portland office have just received advice that they will benefit from the operation of this system, together with a full explanation of its provisions.

Every employe is insured in proportion to the length of his service and the earning power with the company. The minimum limit is \$250 in case of death, and the maximum \$3000.

Two-Year Trial Started. Accompanying Mr. Ripley's circular letter on the subject is the following official explanation:

"The plan of providing something for a man's family upon his death has been under consideration for several years and an attempt has been made to gauge the success of its operation and its expense to the railroad, but it was felt that no definite conception of its workings could be formed until the plan was put into actual operation. This resulted in the determination to put it into effect for two years, with the distinct warning to employes that whether it is continued in the present form or in some modified form depends upon how it proves to work out in actual practice, so employes must not feel that its continued operation in its present form is assured.

"It is quite likely, however, that at the end of two years an even more liberal plan will be adopted.

"No charge of any kind will be assessed upon employes for the benefits thus assured their families.

"Every employe will this month get a card with his pay check, and on this card he should write the name of the party he wants to receive the money upon his death. All employes should see to it that they get these cards and that they fill them out promptly."

President Sends Letter. Mr. Ripley's letter says in part: "For some time past the directors and officers of this company have been considering a plan of making donations or paying benefits to the families of employes dying while in the service of the company."

"It has been believed that, regardless of the amount of wages a man may receive, he will derive comfort in the knowledge that in the event of his death those dependent on him will not be in absolute want."

"Beginning, therefore, on July 1, 1916, the company proposes to pay to such party, or parties, as such employe, dying while in its service and who has been in its employ for two or more years continuously, a sum equal to 5 per cent of the salary or wage received by him during the 12 months immediately preceding his death, multiplied by the number of years of continuous service, provided that the maximum amount payable shall be one year's pay, but shall in no case exceed \$3000; and provided further that the minimum shall be \$250."

Fields Near Gresham Found Assailed by "Black Scurf" and Late Blight by M. H. McKay.

M. H. McKay, assistant plant pathologist of the Oregon Agricultural College, has been passing the last two days making a potato disease survey of a portion of Multnomah county. He has visited fields in the neighborhood of Gresham. The commonest diseases found were rhizoctonia and late blight.

In almost every badly diseased hill the fungus rhizoctonia grows on the skin of the potatoes and forms the black resting bodies of the fungus which gives the disease the name of "black scurf".

The other common disease found was late blight, and it is just beginning. Whether it develops seriously or not depends upon weather conditions. The extent of the potato diseases varied greatly in different sections.

In order to stimulate the development of disease-free potatoes for seed purposes, the agricultural experiment station hopes to develop a plan of state inspection and certification.

The government of India will extend its wireless system until every army post has a station in the charge of a trained officer.

Thin men and women who would like to increase their weight with 10 or 15 pounds of healthy "stay-there" fat should try eating a little Sargol with their meals for a while and note results. Here is a good test worth trying: First weigh yourself and measure yourself. Then take Sargol—one tablet with every meal—for two weeks. Then weigh and measure again. It isn't a question of how you look or feel or what your friends say and think. The scales and the tape measure will tell their own story, and many thin men and women, we believe, can easily add from five to eight pounds in the first 14 days by following this simple direction. And best of all, the new flesh stays put.

Sargol does not of itself make fat, but mixing with your food it aims to turn the fat, sugars and starches of what you have eaten into rich, ripe fat-producing nourishment for the tissues and blood—prepares it in an easily assimilated form which the blood can readily accept. Much of this nourishment now passes from your body as waste. But Sargol works to stop the waste and do it quickly and to make the fat-producing contents of the very same meals you are eating now develop pounds and pounds of healthy flesh between your ribs and bones. Sargol is safe, pleasant, efficient and inexpensive. All leading druggists in this vicinity sell in large boxes 40 tablets to a package—on a guarantee of weight increase or money back, as found in each large box—Adv.

Seattle's Famous Hotel. Fine central location. Every modern appointment. Cafe one of finest on the Coast.

ACHESHIRE MITCHELL MANAGER. \$1 per day up with use of bath. \$2 per day up with private bath.

COMFORT & CONVENIENCE

J.P. FINLEY and SON MONTGOMERY AT FIFTH "The Better Way" THE FINLEY CHAPEL offers to all the refinement and elegance of a fine home. Our service remains always the same. Lack of great means is no longer a barrier to the best funeral.

Thin People Can Increase Weight. Thin men and women who would like to increase their weight with 10 or 15 pounds of healthy "stay-there" fat should try eating a little Sargol with their meals for a while and note results.

DISEASED TUBERS EYED. PLANT PATHOLOGIST STUDIES AFFLICTED POTATOES. Fields Near Gresham Found Assailed by "Black Scurf" and Late Blight by M. H. McKay.

PERSONAL MENTION. R. H. Graves, of Corvallis, is at the Seaside. John Harper, of Dallas, is at the Perkins.

GOING SOME! 10,000, 15,000, 20,000—not at all uncommon performances for Savages. Do you get miles like these from your tires?

SAVAGE TIRES. FACTORY DISTRIBUTOR JOHN A. WALTERS CO., Inc. Broadway at Ankeny St., Portland.