

HUGHES' MAJORITY IN STATE 15,117

Republican Vote Is \$100,000; Cummins Loses by 29,200; Burton Gets 7014.

WILSON VOTE IS SOLID

Roosevelt Gets Enough Backing to Nominates Him; Ed Wright Is Ahead in Eastern Oregon. Buchtel Is Nominated.

(Continued From Page 8.)

625, Kyle 130, McCulloch 198, Rusk 48, Service 103, Wright 105. Democratic National Delegates—Armitage 367, Bennett 359, Crawford 338, Hollister 292, Morgan 272, Morrow 142, O'Reilly 71, Tomlinson 85, Biggs 213, Holmes 118, King 195, Peterson 141, Worden 216.

Electors—Coshov 482, Haney 419, Neff 420, Sheahan 410, Stevenson 409. Probable nominees for Legislature are: Albert E. Elder and Wesley O. Smith, Republican; State Senator—Republican, W. Earl Thompson; Representative in Congress—Republican, Nicholas J. Sinnott. For judicial offices, state Supreme Court—Republican, Burnett and Moore.

County officers nominated are: Circuit Judge—Republican, D. Kuykendall, incumbent; Democrat, Rollo C. Groesbeck. District Attorney—Joseph S. Kent, Republican, and William M. Duncan, Democrat. Sheriff—D. P. Burton, Republican, incumbent, and George L. Humphrey, Democrat. County Clerk—C. J. Delap, Republican, incumbent, and Burt E. Hawkins, Democrat. County Commissioner—Thaddeus G. McHattan, Republican, and Burrell W. Short, Democrat. Treasurer—George W. Hayden, Republican, incumbent, and J. Hayden, Republican, and Jasper Bennett, Democrat. County School Superintendent—Miss Ella Wells, Republican. County Surveyor—E. B. Brown, Republican. Circuit Court Clerk—Clyde K. Brandenburg, Republican, and George Chastain, Democrat, incumbent. Coroner—Dr. A. A. Soule, Republican, and Earl Whitlock, Democrat.

OLCOTT AND MOORES CLOSE

Fulton Leads Ticket in Linn and Hughes Majority Is Large.

ALBANY, Or., May 20.—(Special.)—Complete returns from all precincts in Linn County on Republican primaries give: President—Burton 205, Cummins 629, Hughes 184.

Delegates-at-large—Ackerson 520, Boyd 187, Buland 626, Cameron 1472, Carey 952, Case 588, Fulton 1798, Hawkins 1456, King 584, Spencer 559, Warren 204, Worsley 584.

Delegates from First District—Abraham 1525, Bishop 1715, Calkins 1442, Steeves 640.

Presidential electors—Butler 2167, Cottel 2075, Ivanhoe 1632, Keady 1718, MacMahon 1815, North 1967, Wilson 1885.

Secretary of State—Moore 1563, Olcott 1538.

Public Service Commissioner—Buchtel 1133, Campbell 1663.

On the Democratic primaries, complete returns from 44 of the 52 precincts in the county give:

Delegates to National convention—Armitage 607, Bennett 676, Crawford 273, Hollister 440, Morgan 394, Morrow 285, O'Reilly 201, Tomlinson 229.

Delegates from First District—Jackson 801, Raddant 840, Turner 820, Warren 285, O'Reilly 201, Tomlinson 229.

Presidential electors—Coshov 565, Haney 538, Neff 532, Sheahan 524, Stevenson 529.

For the Republican nomination for two Circuit Judges in the Third Judicial District, comprising Linn and Marion counties, Percy E. Kelly, running for re-election, has a 2 to 1 lead in Linn County. Myron E. Pogue leads George G. Binham by 118 votes in this county. In Marion County, lead by Elisha P. Morcom a poor fourth.

From a field of five candidates, Linn County Republicans have nominated Robert S. Acheson, of Shedd; Charles Childs, of Brownsville, and F. H. Porter, of Halsey, for Representatives. There were no candidates for the Legislature on the Democratic ballots, but names were written in and the returns indicate that W. P. Elmore, of Brownville; Kevin R. Schultz, of Albany, and E. C. Peery, of Scio, are nominated. The first are named beyond doubt, and Peery has a good lead over Ben T. Suddell, of Albany.

Gale S. Hill, of Albany, was renominated for District Attorney by Republicans without opposition, and unofficial returns indicate he has received the Democratic nomination also.

On the county ticket the Republicans have renominated R. M. Russell for County Clerk, E. L. Fisher for Assessor, W. W. Francis for Treasurer, William Fortmiller for Coroner and T. J. Butler for Commissioner, and have nominated Ralph Thom, of Lebanon, for County Recorder. Maxwell Cummings, of Halsey, for County Surveyor, D. H. Bodine, running for renomination for Sheriff, and M. M. Kane, of Sweet Home, for Commissioner.

Incomplete returns indicate that County Clerk Russell, county Assessor Fisher and possibly some other Republican nominees have received the Democratic nominations also, and that Miss Velma Davis, of Albany, has been nominated for Recorder.

Mark V. Weatherford, of Albany, was written in generally on Democratic ballots as a candidate for Representative in Congress from the First District.

JOSEPHINE IS FOR CAMPBELL

Hughes Well Ahead; Cameron and Fulton Are Chosen.

GRANTS PASS, Or., May 20.—(Special.)—Complete returns from the primary election in Josephine County follow:

Republican delegates-at-large—Ackerson 407, Boyd 498, Buland 433, Cameron 571, Carey 472, Case 152, Fulton 512, Hawkins 382, Peterson 317, Spencer 458, Warren 179, Worsley 241.

Republican delegates for First Congressional District—Abraham 524, Bishop 714, Calkins 524, Steeves 154.

For President—Burton 144, Cummins 492, Hughes 561.

For Presidential electors—Butler 917, Cottel 518, Ivanhoe 429, Keady 481, MacMahon 708, North 914, Wilson 940.

For Secretary of State—Moore 559, Olcott 584.

For Representative in Congress—Hawley 1215.

For Justice of the Supreme Court—Burnett 1034, Moore 916.

For Democratic delegates-at-large—Armitage 320, Bennett 237, Crawford

SECRETARY OF STATE, WHO WINS REPUBLICAN NOMINATION FOR RE-ELECTION.



Ben W. Oldrett

251, Hollister 169, Morgan 204, Morrow 208, O'Reilly 167, Tomlinson 142. For Democratic delegates First Congressional District—Jackson 248, Raddant 193, Turner 213.

For Democratic Presidential electors—Coshov 458, Haney 245, Neff 355, Sheahan 257, Stevenson 247.

The following candidates were successful in securing nominations on the local Republican ticket: For Circuit Judge First District, Frank M. Calkins, 1140; State Senator, J. C. Smith; Representative, A. E. Voorhees; County Attorney, E. E. Blanchard; Sheriff, George W. Lewis; County Clerk, Eugene L. Coburn; County Treasurer, George S. Calhoun; County Assessor, Eclius Pollock; County School Superintendent, Lincoln Savage; County Surveyor, Horace C. Hall; County Coroner, S. Lougbridge; County Commissioner, G. M. Savage.

Democratic nominees are as follows: For County Attorney, W. T. Miller; Sheriff, W. J. Russell; Surveyor, R. A. Dean; County Commissioner, J. G. Howell.

WOMEN'S RACE IS CLOSEST

Cameron and Fulton Leading on Benton County Returns.

CORVALLIS, Or., May 20.—(Special.)—Complete unofficial returns, Benton County, give:

Delegates-at-large—Ackerson 364, Boyd 516, Buland 270, Cameron 943, Carey 514, Case 424, Fulton 947, Hawkins 1062, Peterson 482, Spencer 456, Warren 144, Worsley 442.

Delegates, First District—Abraham 893, Bishop 940, Calkins 927, Steeves 460.

For President—Burton 81, Cummins 421, Hughes 1745.

For Presidential electors—Butler 1304, Cottel 1170, Ivanhoe 1498, Keady 1010, MacMahon 1026, North 1231, Wilson 1253.

Secretary of State—Moore 801, Olcott 1052.

Public Service Commissioner—Buchtel 746, Campbell 855.

Twenty-seven out of 28 precincts give:

Democratic delegates-at-large—Armitage 294, Bennett 390, Crawford 407, Hollister 490, Morgan 304, Morrow 311, O'Reilly 188, Tomlinson 181.

Delegates, First District—Jackson 538, Raddant 512, Turner 355.

Electors—Coshov 588, Honey 576, Neff 557, Sheahan 552, Stevenson 580.

W. H. Lafferty received the Republican nomination for State Legislator by a margin of 53 votes.

The closest contest in Benton County was that between Misses Ella Johnson and Nora E. Miller, candidates for Democratic nomination for County Recorder. Complete unofficial returns indicate that W. P. Elmore, of Brownville; Kevin R. Schultz, of Albany, and E. C. Peery, of Scio, are nominated. The first are named beyond doubt, and Peery has a good lead over Ben T. Suddell, of Albany.

Gale S. Hill, of Albany, was renominated for District Attorney by Republicans without opposition, and unofficial returns indicate he has received the Democratic nomination also.

On the county ticket the Republicans have renominated R. M. Russell for County Clerk, E. L. Fisher for Assessor, W. W. Francis for Treasurer, William Fortmiller for Coroner and T. J. Butler for Commissioner, and have nominated Ralph Thom, of Lebanon, for County Recorder. Maxwell Cummings, of Halsey, for County Surveyor, D. H. Bodine, running for renomination for Sheriff, and M. M. Kane, of Sweet Home, for Commissioner.

Incomplete returns indicate that County Clerk Russell, county Assessor Fisher and possibly some other Republican nominees have received the Democratic nominations also, and that Miss Velma Davis, of Albany, has been nominated for Recorder.

MOORES HAS POLK MAJORITY

Dallas Druggist Is Nominated for Legislature.

DALLAS, Or., May 20.—(Special.)—Complete but unofficial Polk County returns give Moore a majority of 242 votes. Buchtel has apparently carried Polk County by 20 votes. Hughes has a majority of 500 votes. C. W. Fulton and George J. Cameron are leading all contestants.

For Representative for Lincoln and Polk counties W. V. Fuller, Republican, had no opposition. For Representative from Polk County, Conrad Staffin, druggist of Dallas, won with a majority of 208 over his opponents.

For District Attorney Walter L. Toole, Jr., of Dallas, defeated B. F.

Swopes, of Independence, with a majority of 56 votes. For County Clerk, Fred J. Hoffman, present County Treasurer, received a plurality of 306 votes; for school superintendent, Miss Almida J. Fuller, of Independence, defeated W. J. Reynolds, incumbent with a majority of 83 votes; A. V. R. Snyder defeated Mrs. Winnie Braden with a scant 12 votes; Homer R. Robb, a dark horse, defeated C. R. Canfield by 40 votes; for County Commissioner, Mose Manson, of Dallas, with a total vote of 1209, defeated George A. Wells, incumbent, with 788 votes.

LINCOLN COUNTY FOR BUCHTEL

Twenty-Three Republicans Write in Name of Roosevelt.

TOLEDO, Or., May 20.—(Special.)—Incomplete returns in Lincoln County give:

Delegates-at-large—Ackerson 162, Boyd 265, Mrs. G. L. Buland 196, Cameron 267, Carey 181, Case 133, Fulton 249, Hawkins 212, Peterson 111, Spencer 112, Warren 55, Worsley 131.

District delegates—Abraham 257, Bishop 257, Calkins 248, Steeves 148.

President—Burton 100, Cummins 198, Hughes 292, Roosevelt 27.

Electors—Butler 402, Cottel 376, Ivanhoe 183, Keady 264, MacMahon 291, North 245, Wilson 256.

Secretary of State—Moore 257, Olcott 343.

Commissioners—Buchtel 314, Campbell 2138, Morcom 475.

County Commissioners—Hunt 4125, Libby 2390, Wilson 875.

Coroner—Clogh, 4505; McIntire, 2627.

Constable—Lee W. Acheson, 363; Lou C. Brotherton, 409; John W. Holman, 445; W. D. Miles, 548; C. H. Pratt, 299; J. W. Roberts, 604; Percy M. Varney, 995.

Only 13 Progressives voted in Marion County. Roosevelt received 13 votes and Henry Ford one.

CAMPBELL LEADS IN SOUTH

Republicans of Douglas County Renominate Majority of Officials.

ROSEBURG, Or., May 20.—(Special.)—Complete unofficial election returns received from 54 of the 57 precincts in Douglas County give the following results:

Secretary of State—Charles E. Moore 184, Ben Olcott 197.

President—Burton 314, Cummins 937, Hughes 1650.

National Delegates—Ackerson 706, Boyd 1352, Buland 830, Cameron 1466, Carey 1195, Case 629, Fulton 1221, Hawkins 982, Peterson 612, Spencer 827, Warren 257, Worsley 672, Abraham 1606, Bishop 1142, Calkins 1451, Steeves 124.

Public Service Commissioner—Buchtel 1258, Campbell 1461.

Democratic National Delegates—Armitage 712, Bennett 647, Crawford 827, Hollister 517, Morgan 658, Morrow 591, O'Reilly 288, Tomlinson 249, Jackson 901, Raddant 538, Turner 998.

Electors—Coshov 588, Haney 691, Neff 714, Sheahan 721, Stevenson 551.

Republicans nominated for legislative, county and judicial offices follow: State Senators—Charles E. Moore, Brand and Roy Griggs, Representatives—George Neuner, District Attorney—John S. Coker, E. O. Taylor, for County Commissioner, Milton Germond, Surveyor—James Sawyers, Treasurer—O. C. Brown, School Superintendent—W. S. Wade, Coroner, and C. W. Clark, Clerk.

Democrats nominated for legislative, county and judicial offices follow: Jay Arthur McPhillips and E. W. Hase, Representatives; J. K. Howard, Joint Representative from Douglas and Jackson; C. H. Cleaves, School Superintendent; B. H. Nelson, Sheriff; Harry Pearce, Sheriff; T. Ashworth, Assessor; J. W. Hamilton and G. F. Skipworth were nominated for Circuit Judge.

HUGHES CARRIER MALHEUR

Not More than 60 Per Cent of Registered Vote Is Polled.

VALE, Or., May 20.—(Special.)—Twenty precincts out of 25 give Olcott 588, Moore 481, Hurley 713, Gowen 317, Stewart 192, Crandall 607, Donegan 158, Phillips 396.

Public Service Commissioner—McCulloch 858, Corey 162, Kyle 73, Rusk 35, Service 102, Wright 126.

Democratic returns are scattered and uncounted.

Hughes carries the county, with Cummins second and Burton third. Not more than 60 per cent of the county registered vote was polled. Ontario gave McCulloch 325 out of 351 and Vale gave Crandall 181 out of 225 for Joint Representative and Malheur counties.

BAKER LOCAL VOTE IS CLOSE

Hughes Favored and Olcott Given Large Majority.

BAKER, Or., May 20.—(Special.)—Twenty-six of the largest precincts complete out of 41 in Baker County give the following:

Republican—Secretary of State, Moore 495, Olcott 607; President, Burton 303, Cummins 361, Hughes 635; National Delegates—Armitage 341, Boyd 512, Buland 270, Cameron 559, Carey 444, Case 267, Fulton 561, Hawkins 372, Peterson 336, Spencer 423, Warren 276, Worsley 270; Second District, Brooks 902, Burgess 720, Pollard 314; Electors, Butler 904, Cottel 802, Ivanhoe 482, Keady 184, MacMahon 285, North 302, Wilson 800; Public Service Commission-

ary election in 84 out of 98 precincts in Lane County give Hughes, for President-Complete returns from yesterday's president, 2372, Cummins 1188 and Burton 387.

Delegate to National convention—Ackerson 1140, Boyd 2101, Buland 1049, Cameron 2176, Carey 1562, Case 1075, Fulton 1352, Hawkins 1513, Peterson 848, Spencer 1187, Warren 279, Worsley 950.

Delegates from First Congressional District—Abraham 1930, Bishop 1669, Calkins 2779, Steeves 1117.

For Vice-President of the United States—Wheeler 2004.

Electors of President and Vice-President—Butler 3077, Cottel 2686, Ivanhoe 1310, Keady 2192, MacMahon 2348, North 2322, Wilson 2374.

Secretary of State—Moore 2019, Olcott 2308.

Justices of the Supreme Court—Burnett 2460, Moore 2940.

Commission of the Public Service—Buchtel 1109, Campbell 2329.

Judges of the Circuit Court, Second District—Buchanan 2176, Cardwell 1703, Coke 2295, Potter 3328, Schilbrede 1640.

Democratic delegate to the National convention—Armitage 518, Bennett 384, Crawford 362, Hollister 361, Morgan 230, Morrow 173, O'Reilly 127, Tomlinson 154.

Judge of the Circuit Court, Second District—Hamilton 483, Skipworth 511.

The county ticket nominated by the Republicans follows:

Legislature—Louis E. Bean, Allen Eaton, Walter E. Johnson.

District Attorney—J. M. Evers, Assessor—D. P. Burton.

County Clerk—Stacey M. Russell. Sheriff—Charles P. Barnard.

Treasurer—Samuel W. Taylor. Commissioner—Ernest L. Spencer.

The Democrats nominated James C. Parker, incumbent, as a candidate for Sheriff.

HENRY FORD GETS ONE VOTE

Eleven Other Marion County Progressives Support Roosevelt.

SALEM, Or., May 20.—(Special.)—Complete returns on the Republican vote in Marion County give:

Delegates, state at large—Ackerson 1457; Boyd, 3967; Buland, 1380; Cameron, 4132; Carey, 2518; Case, 1337; Fulton, 2007; Hawkins, 2080; Peterson, 1317; Spencer, 1560; Warren, 447; Worsley, 1245.

Delegates, First District—Abraham, 3276; Bishop, 5083; Calkins, 2532; Steeves, 1947.

President—Burton, 736; Cummins, 1256; Hughes, 4451.

Electors—Butler, 5045; Cottel, 4716; Ivanhoe, 2275; Keady, 3459; MacMahon, 4107; North 4778; Wilson, 4632.

Secretary of State—Moore, 3409; Olcott, 4261.

Public Service Commissioner—Buchtel, 620; Campbell, 2055.

Circuit Judge—4392; Kelly, 5372; Morcom, 1252; Pogue, 2978.

Representatives—Balknap, 2845; Sam H. Brown, 2845; Calkins, 2839; Elgin, 3034; Seymour Jones, 4021; W. A. Jones, 4138; Keoch, 2143; Martin, 2054; McInturf, 1245; Page, 2555; Robertson, 2745; Schlarb, 2877.

District Attorney—Carson, 359; Gehlar, 2349; Keyes, 2138; McCord, 274; Smith, 1718; Winslow, 1287.

Sheriff—Cooper, 2604; Needham, 4925; County Assessor—Anderson, 1924; West, 5478.

School Superintendent—Cornelius, 2194; Gaunt, 827; Phillips, 1069; Smith, 3621.

County Commissioners—Hunt, 4125; Libby, 2390; Wilson, 875.

Coroner—Clogh, 4505; McIntire, 2627.

Constable—Lee W. Acheson, 363; Lou C. Brotherton, 409; John W. Holman, 445; W. D. Miles, 548; C. H. Pratt, 299; J. W. Roberts, 604; Percy M. Varney, 995.

Only 13 Progressives voted in Marion County. Roosevelt received 13 votes and Henry Ford one.

CAMPBELL LEADS IN SOUTH

Republicans of Douglas County Renominate Majority of Officials.

ROSEBURG, Or., May 20.—(Special.)—Complete unofficial election returns received from 54 of the 57 precincts in Douglas County give the following results:

Secretary of State—Charles E. Moore 184, Ben Olcott 197.

President—Burton 314, Cummins 937, Hughes 1650.

National Delegates—Ackerson 706, Boyd 1352, Buland 830, Cameron 1466, Carey 1195, Case 629, Fulton 1221, Hawkins 982, Peterson 612, Spencer 827, Warren 257, Worsley 672, Abraham 1606, Bishop 1142, Calkins 1451, Steeves 124.

Public Service Commissioner—Buchtel 1258, Campbell 1461.

Democratic National Delegates—Armitage 712, Bennett 647, Crawford 827, Hollister 517, Morgan 658, Morrow 591, O'Reilly 288, Tomlinson 249, Jackson 901, Raddant 538, Turner 998.

Electors—Coshov 588, Haney 691, Neff 714, Sheahan 721, Stevenson 551.

Republicans nominated for legislative, county and judicial offices follow: State Senators—Charles E. Moore, Brand and Roy Griggs, Representatives—George Neuner, District Attorney—John S. Coker, E. O. Taylor, for County Commissioner, Milton Germond, Surveyor—James Sawyers, Treasurer—O. C. Brown, School Superintendent—W. S. Wade, Coroner, and C. W. Clark, Clerk.

Democrats nominated for legislative, county and judicial offices follow: Jay Arthur McPhillips and E. W. Hase, Representatives; J. K. Howard, Joint Representative from Douglas and Jackson; C. H. Cleaves, School Superintendent; B. H. Nelson, Sheriff; Harry Pearce, Sheriff; T. Ashworth, Assessor; J. W. Hamilton and G. F. Skipworth were nominated for Circuit Judge.

HUGHES CARRIER MALHEUR

Not More than 60 Per Cent of Registered Vote Is Polled.

VALE, Or., May 20.—(Special.)—Twenty precincts out of 25 give Olcott 588, Moore 481, Hurley 713, Gowen 317, Stewart 192, Crandall 607, Donegan 158, Phillips 396.

Public Service Commissioner—McCulloch 858, Corey 162, Kyle 73, Rusk 35, Service 102, Wright 126.

Democratic returns are scattered and uncounted.

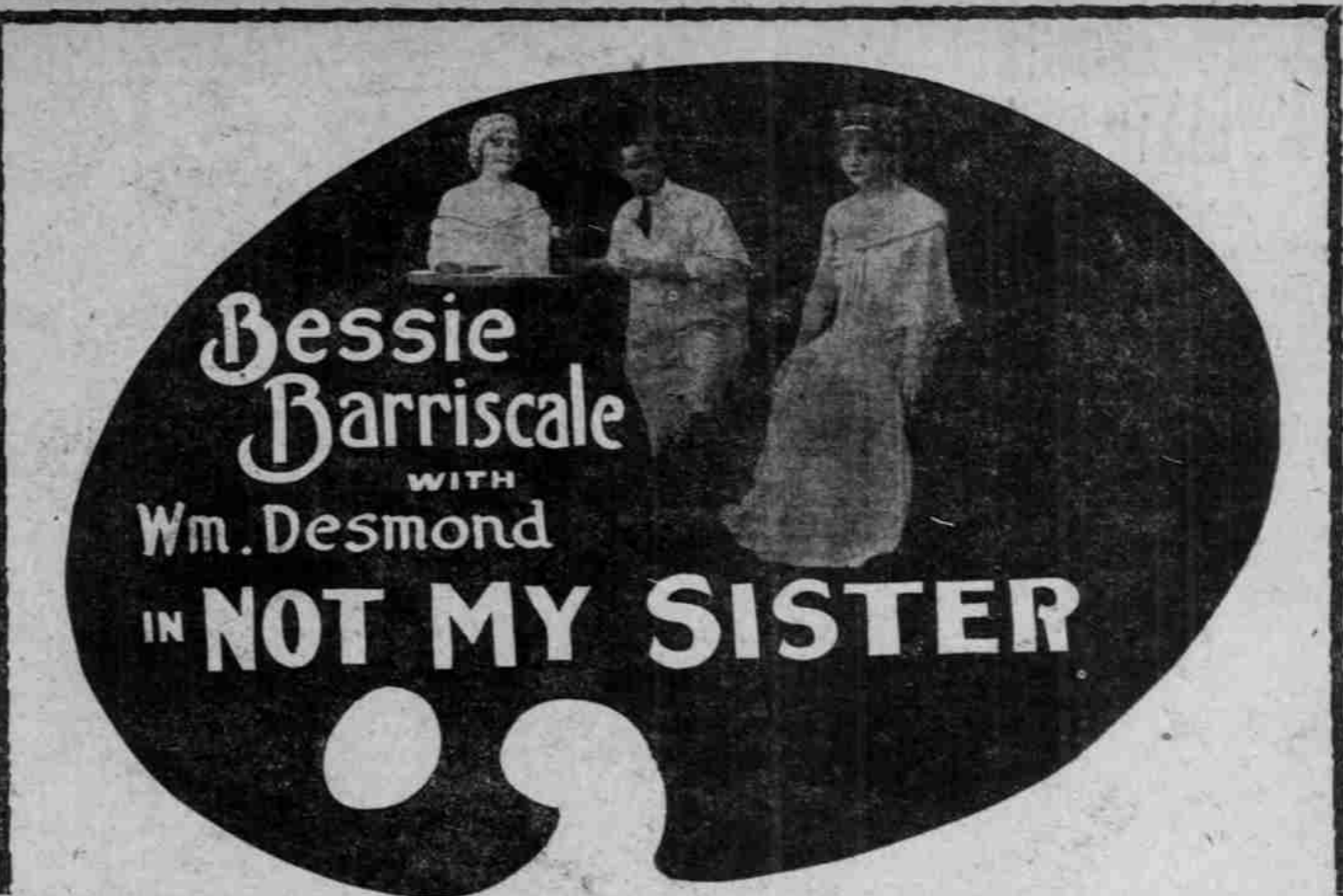
Hughes carries the county, with Cummins second and Burton third. Not more than 60 per cent of the county registered vote was polled. Ontario gave McCulloch 325 out of 351 and Vale gave Crandall 181 out of 225 for Joint Representative and Malheur counties.

BAKER LOCAL VOTE IS CLOSE

Hughes Favored and Olcott Given Large Majority.

BAKER, Or., May 20.—(Special.)—Twenty-six of the largest precincts complete out of 41 in Baker County give the following:

Republican—Secretary of State, Moore 495, Olcott 607; President, Burton 303, Cummins 361, Hughes 635; National Delegates—Armitage 341, Boyd 512, Buland 270, Cameron 559, Carey 444, Case 267, Fulton 561, Hawkins 372, Peterson 336, Spencer 423, Warren 276, Worsley 270; Second District, Brooks 902, Burgess 720, Pollard 314; Electors, Butler 904, Cottel 802, Ivanhoe 482, Keady 184, MacMahon 285, North 302, Wilson 800; Public Service Commission-



Born to love, trusting in her affections, a woman sins. Then come days of bitter anguish, nights of frightful torture. Later, in the light of a true love, comes humility and peace. Should this wife, happily married, confess to her husband a misstep made in her youth?

A DASH OF COURAGE WE ADMIT that this is another of those famously funny Keystone comedies. FOUR DAYS STARTING TODAY. WEEK-DAY 10c, EVENINGS 15c. CHILDREN 5c. CONTINUOUS 10:30 A. M. TO 11 P. M. COLUMBIA

er, Corey 528, Kyle 22, McCulloch 137, Rusk 55, Service 478, Wright