

MAYACHI MARU IS IN

Young Japanese Skipper Ends Difficult Trip Across.

ARRIVAL DELAYED BY GALE

Vessel Heads Into Blow for 12 Hours With Disabled Steering Gear—Sulphur and Hardwood Come Off Here.

Captain M. Miyake is 22 years of age and has been in command of vessels two years, but being one of the youngest skippers in the Japanese merchant marine does not detract from his ability to handle the Japanese steamer Mayachi Maru, which reached municipal dock No. 2 today...

Captain Miyake says that Japanese shipyards have been going to their full capacity, but when they have had a shortage of steel was apparent, shipments from the United States not having been received regularly...

The Mayachi Maru was formerly the Tami Maru, and was sold shortly before starting to load at Otaru, hence the change of name. Miyake is said to be a word originally coined by the Ainu race, and was sold shortly before starting to load at Otaru, hence the change of name...

WAR LOSSES ARE TABULATED

Increase Indicated in Destruction of Vessels This Year.

Data published by the New York Journal of Commerce bearing on maritime losses due to the European conflict, covering vessels destroyed between August 1, 1914, and May 1, 1915, place the total at approximately 5,452,259 gross tons...

Table showing Allied Shipping Destroyed and Neutral Shipping Destroyed with columns for Gross Tons and Nationality.

ALASKA COAST PILOT OUT

Government Issues New Publication in Interest of Navigators.

The United States Coast and Geodetic Survey has issued a Coast Pilot that will doubtless be a boon to Alaskan shipping. This book, containing 293 pages, including indexes, contains the charts of the coast of Alaska from Yakutat Bay to the Arctic Ocean...

GRAHAMONA REPAIRS START

Multnomah County Has Work Done at Plant of Joseph Supple.

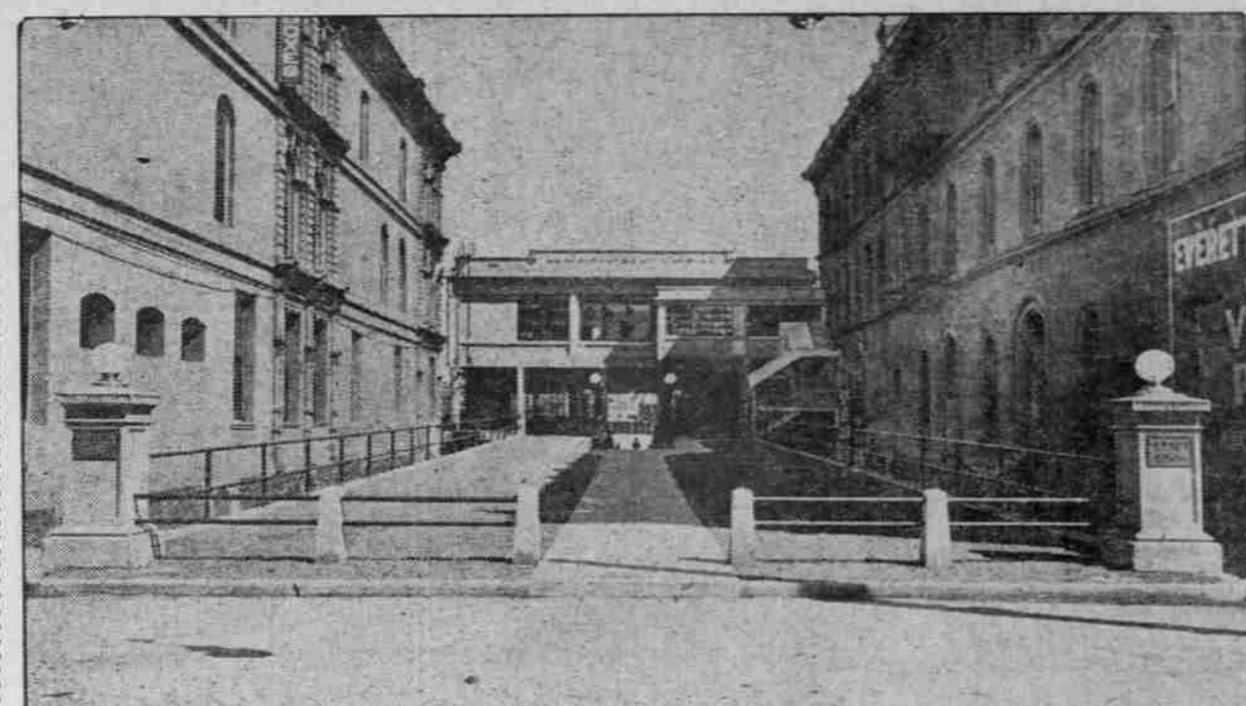
Repairs to the Yellow Stack steamer Grahamona having been arranged for by the Multnomah County Commissioners, the vessel having been damaged when the Morrison-street bridge drew swung against her Monday night...

BEAR TAKES LIGHTEST LOAD

At That "Big Three" Steamer Is Dispatched with 2300 Tons.

Though there were 2300 tons of commodities stowed beneath her hatches when she sailed yesterday afternoon, it was the smallest cargo the steamer Bear has taken from Portland for California ports in a year. The reason for the vessel not being crammed to capacity was the fact the steamer Rose City sailed Wednesday, a place being made for her on the sailing card...

STREET END BECOMES ATTRACTIVE SPOT ON WATERFRONT THROUGH IMPROVEMENTS FOSTERED BY MUNICIPAL BODIES.



STARK-STREET MUNICIPAL BOAT LANDING AND MULKHEY PARK.

From what was an unsightly collection of rocks, dirt and broken planks a few years ago, the foot of Stark street has been improved through the efforts of harbor authorities until today it is the most slightly place on the waterfront. The municipal landing originally built by the Commission of Public Docks in 1913 was a one-story structure with a slip leading to a float for the accommodation of small vessels and pleasure craft...

ROANOKE 34 YEARS OLD

VESSEL IN DISASTER WAS PRODUCT OF FAMOUS BUILDER.

Geo. W. Elder and Breakwater Were Made by Same Concern as Ship That Turned Turtle. In the destruction of a vessel at sea the concern of the general public is chiefly centered on the loss of life. Mariners, while as deeply interested in that feature, especially when old shipmates are thought aboard, are prone to hark back to the history of the vessel, as they did the other day relative to the loss of the steamer Roanoke off the California coast...

WEATHER ADDS TO JOURNEY

Travelers View Two Rivers on Way to Flavel for Ocean Trip.

It was a jolly crowd of passengers to leave the North Bank depot yesterday on the Great Northern Pacific steamer train to connect with the fleet of motor launch boats that were to take the Golden Gate on scheduled time. The Great Northern had aboard 120 tons of freight, in the shipments being a rummer, cereals, wire, box shoes, paper and canned salmon. The Northern Pacific, her sistership, is due back in service soon and when the Great Northern is sent to the yard for a short time both will be on the run and the express service of last summer resumed.

TIE CARRIER IS ON WAY

British Steamer Photinia Four Days Out of Callao for Columbia.

Sailing from Callao May 10 the British steamer Photinia is on the way here to load part of a lot of tea stacked at Kalama for delivery at London, they having been ordered last year in the interest of the British government. There are two orders at Kalama, the first having been assembled there from other points on the river, and the Photinia cannot take both, so a second steamer is to follow. The second cargo will be dispatched by the Pacific Export Lumber Company.

JETTY FUND NEED EMPHASIZED

Chamber to Urge Immediate Action to Prevent Suspension of Work.

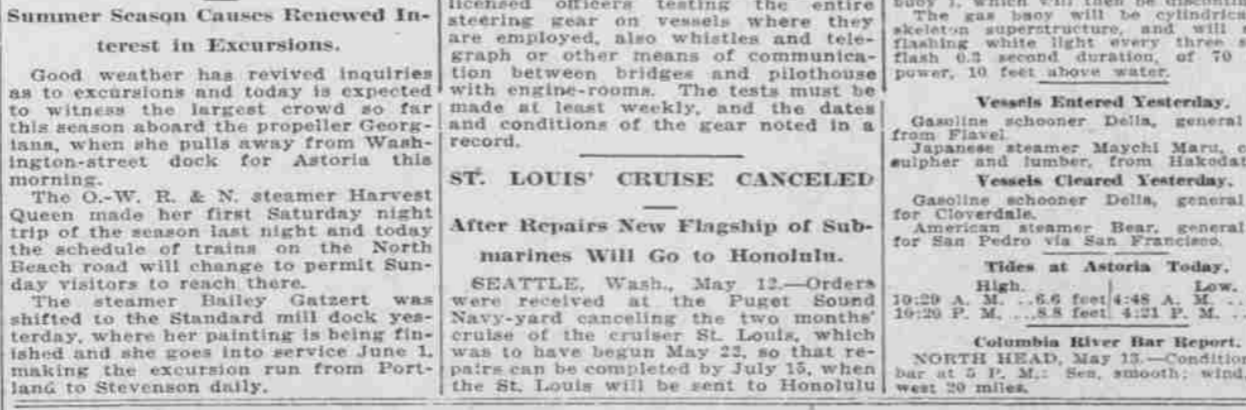
Action will be taken by the Chamber of Commerce in directing the attention of the Oregon delegation at Washington to the danger of operations on the north jetty being suspended next month unless the rivers and harbors bill is passed. News that a shutdown is contemplated June 15 because funds on hand will not carry the project beyond that date, and at the same time leaves money for maintaining the dredge Chinook on the entrance channel work until October, caused considerable discussion yesterday. Not only the jetty's advancement, but other improvements will be retarded if Congress does not act immediately.

RIVER SCHEDULES RESUMING

Summer Season Causes Renewed Interest in Excursions.

Good weather has revived inquiries as to excursions and today is expected to witness the largest crowd so far this season aboard the propeller Georgetown, when she pulls away from Washington-street dock for Astoria this morning. The O. W. R. & N. steamer Harvest Queen made her first Saturday night trip of the season last night and today the schedule of trains on the North Beach road will change to permit Sunday visitors to reach there by the steamer Bailey Gatzert was shifted to the Standard mill dock yesterday, where her painting is being finished and she goes into service June 1, making the excursion run from Portland to Stevenson daily.

TRAMP DISCHARGES HARDWOOD AND SULPHUR CARGO AT PORTLAND AND LOADS WAR SUPPLIES ON PUGET SOUND FOR VLADIVOSTOK.



MUNICIPAL DOCK NO. 2. JAPANESE SEAMER MAYACHI MARU AT DOCK NO. 2.

BOGEY MAN'S STAY

Permanent Portland-Alaska Service Proposed.

LUMBER IS BEING CARRIED

Puget Sound Interests Open Negotiations for Change, but Commercial Forces Here Fight for Retention.

When the Columbia Contract Company transports the last of an order for 6,000,000 feet of lumber placed by the Government with the Eagle Lumber Company for delivery at Anchorage, it is proposed to make permanent the barge service between Portland and Alaska. The company is loading the first two barges at Inman-Poulsen's mill and they will be started north in a few days, followed by two others. The tug Samson and Henry J. Hiddle will tow two of the fleet at a time and such dispatch is planned that the lumber contract will be closed before the Alaska season opens from there to Alaska.

The operation of the large line places no burden on Portlanders other than supplying business, the Columbia Contract Company having its own equipment and caring for its maintenance. The trade and commerce bureau of the Chamber of Commerce is in touch with considerable freight to be moved north and is endeavoring to have at least a portion of the rail orders of the United States Steel Products Company handled via Portland, working rails to come from barges can be done much more quickly than when stowed in the hold of a steamer, while the barges can be stored in any storage, where they will be without regard to the depth of water.

MARINE INTELLIGENCE

Steamer Schedule

Table with columns for Name, From, Date, and other details regarding the steamer schedule.

News from Northwest Ports

GRAYS HARBOR, Wash., May 13.—(Special.)—The schooner Fearless and King of the Sea, both on route to Australia, with lumber cargoes, both on route to Australia. The steamer Dalry (Galaxy) arrived early this morning and is loading at the Donegan mill. The schooner Expansion, 100 days out of Sydney, for Grays Harbor, is expected any time now.

WILLAMETTE HAS FEE

MRS. FRANCES GITTESS CROWNED QUEEN OF MAY.

WILLAMETTE UNIVERSITY, Salem, Or., May 13.—(Special.)—The coronation of Miss Frances W. Gittess as queen of the festival, the academy, was held this afternoon was a ludicrous affair, with a number of the "preps" tasting the cold water. The freshmen were given a number of good words to bring the trees into a healthy condition again.

ABERDEEN CENSUS GROWS

School Children in Grays Harbor City Number 2714.

ABERDEEN, Wash., May 13.—(Special.)—With the Aberdeen school census not yet complete, 2714 names have been secured, which is 14 more than the number obtained last year. This year's census will set a new record, last year's census having been the best up until that time. The census canvass will be completed by Monday night and probably will show an increase of more than 100 names over last year.

GOLD CUTS SALMON RUN

SHORT SEASON IN ALASKAN WATERS IS PREDICTED.

A short run of salmon in Alaskan waters with the fish coming in one gigantic bunch is predicted as a result of the late winter in the Bering Sea district, according to a letter written by H. Brown, warden of the Alaska fisheries service, to the Bureau of Fisheries, Washington, D. C., and which has been forwarded to the Alaska Pacific fisheries office in Portland. The letter, which was sent from Bristol Bay, bears the date of February 19. "Conditions now point to the present winter running well over into the summer in the Bering Sea region, with the opening of the salmon season coming late. This will produce a short run, with the fish coming in one gigantic bunch, according to H. Brown, warden of the Alaska fisheries office in Portland. The letter, which was sent from Bristol Bay, bears the date of February 19. "Conditions now point to the present winter running well over into the summer in the Bering Sea region, with the opening of the salmon season coming late. This will produce a short run, with the fish coming in one gigantic bunch, according to H. Brown, warden of the Alaska fisheries office in Portland. The letter, which was sent from Bristol Bay, bears the date of February 19.

RICHES LEAD TO JAIL

Youths Are Held Pending Investigation of Property.

COSTLY PICTURES IN HOUSE

Expensive Lace Curtains, Rugs and Other Articles Are Discovered at Home of Laborer—Stores Are Missing Goods.

The discovery of an expensive lot of rugs, lace curtains, jardiniere and pictures in the home of Robert Christensen, 787 Walker street, yesterday led to the arrest of young Christensen, aged 23 years, who is held pending the investigation of Christensen's ownership. Christensen, who is only 22 years old, has been living at 787 Walker street with his 28-year-old wife for more than a year. Mrs. Christensen told the police that she did not know how her husband acquired the interior decorations, and the officers are inclined to believe that the goods were located in the home of the laborer, Christensen acquired the property, honestly.

Police Assert Theft Record.

The detectives have been trailing Christensen for three weeks. He has a bad record, they say, and is alleged to be out under guard from a sentence for larceny. The police suspected him after reports of burglaries came to headquarters from the St. Johns district. The whereabouts of the young man at the time that several mysterious attacks were made on Albert Gautier, 1649 Beekley street, will be investigated also.

Rich Curtains Are Found.

Mrs. Christensen was absent. The police hunted the premises until noon when the lace curtains were located there. The floors were covered with expensive rugs. Expensive pictures hung on the walls. The windows were hung with valuable lace curtains and located an entrance, and was crawling down through a hole in the ceiling of the attic when Christensen opened the rear door of the house and admitted Detective Hellyer.

Value Pined at \$600.

Chamberlain was arrested last night as he was returning from the St. Johns tunnel, where he works, to his home at Dekum avenue and Greeley street. The police say they obtained partial confessions from each of the young men. Some of the goods were located from the Meier & Frank and Olds, Wortman & King stores, it is said. A \$65 camera among the articles found in the house. The police estimate the value of all the goods found at \$600.

\$200,000 BOND ISSUES UP

Splintered Bidding Expected Tomorrow at Port of Umpqua Sale.

MAIRSHFIELD, Or., May 13.—(Special.)—The bidding for the \$200,000 bond issue of the Port of Umpqua will be spirited next Monday, the date for making the sale. There are representatives on the ground from Kerr Bros., Denver; Carsten & Earles, Seattle; John E. Price, Seattle, and the Lumbermen's Bank of Portland, besides others. Bids were received May 1, but rejected, on the statement that they were too low. The prices for Monday's bids are expected to be materially higher than before, since the war scare, which was attributed as the reason of lack of bids, is over.

WILLAMETTE HAS FEE

MRS. FRANCES GITTESS CROWNED QUEEN OF MAY.

WILLAMETTE UNIVERSITY, Salem, Or., May 13.—(Special.)—The coronation of Miss Frances W. Gittess as queen of the festival, the academy, was held this afternoon was a ludicrous affair, with a number of the "preps" tasting the cold water. The freshmen were given a number of good words to bring the trees into a healthy condition again.

ABERDEEN CENSUS GROWS

School Children in Grays Harbor City Number 2714.

ABERDEEN, Wash., May 13.—(Special.)—With the Aberdeen school census not yet complete, 2714 names have been secured, which is 14 more than the number obtained last year. This year's census will set a new record, last year's census having been the best up until that time. The census canvass will be completed by Monday night and probably will show an increase of more than 100 names over last year.

GOLD CUTS SALMON RUN

SHORT SEASON IN ALASKAN WATERS IS PREDICTED.

A short run of salmon in Alaskan waters with the fish coming in one gigantic bunch is predicted as a result of the late winter in the Bering Sea district, according to a letter written by H. Brown, warden of the Alaska fisheries service, to the Bureau of Fisheries, Washington, D. C., and which has been forwarded to the Alaska Pacific fisheries office in Portland. The letter, which was sent from Bristol Bay, bears the date of February 19. "Conditions now point to the present winter running well over into the summer in the Bering Sea region, with the opening of the salmon season coming late. This will produce a short run, with the fish coming in one gigantic bunch, according to H. Brown, warden of the Alaska fisheries office in Portland. The letter, which was sent from Bristol Bay, bears the date of February 19.

KRYPTOK

FAR VISION Without Lines in the Lens KRYPTOKS made by us cost no more than Kryptoks made by other opticians, but the Kryptoks supplied by us are better, being finished on specially made machines and in the finest, most completely equipped retail optical factory in Portland.

Besides, we do all the work under one roof, from the examination of your eyes to the accurate fitting of the finished glasses.

THOMPSON

OPTICAL INSTITUTE 209-10-11 Corbett Bldg. Fifth and Morrison

Dr. Rebec Will Speak.

Dr. George Rebec will speak Friday, May 19, in room H, Central Library, 802 1/2 Commercial street, on "Socialism as a Phase of the Conflict of Ideals," under the auspices of the Intercollegiate Socialist Society.