

BRIDESMAIDS AFFECT FLUFFY APPEARANCE EVEN TO BOUQUET

Lovely New Pattern Described Is of Water Lily Design With Ivory White Blossoms Nested in Green Leaves. Seeming to Float on Ground of Shimmering Water-green.



THIS year's bridesmaid is a fluffy young person, all puffs and frills of airy tulle—even her bouquet of apple blossoms is swathed in yards of tulle—a pretty idea of the introduction of ribbons, always a youthful trimming. Pale pink satin ribbon in various widths gives substance to the airy tulle skirt and the bodice of pink satin is swathed over a fitted featherboned lining to make the waistline trim and slender. The little shirred under-bodice with its puffed sleeve drawn up on pink ribbon is especially girlish and dainty.

One of the loveliest new patterns in silken fabric is the water-lily design—the ivory white blossoms nested in green leaves seeming to float on a ground of shimmering water-green. This beautiful taffeta silk has been selected for the afternoon frock with trailing ribbons of ivory white in a new sash arrangement and sleeves drawn in over white tulle frills with narrower white ribbons. The crispy flaring skirt, faced for 10 inches with light, resilient stiffening, swings out above a petticoat of frilled black net. One white water lily nestles at the front of the bodice.

Compelling smartness and distinction are the characteristics of the fashionable going-away gown. One that meets the requirements in every detail is a widely flaring skirt—at least six yards around the hem—which contrasts modestly with a close-fitting bodice and ripple pleat. The shoulder cape lends a final note of modernness. Small hat and high buttoned boots have their important part in the costume. Gray and blue plaid taffeta has been selected for the toilette, the little French hat of corded gray silk having appliqued blue daisies.

Used to It. (From the Ladies Home Journal.) The man had been hailed before the magistrate on some trivial charge. "Let me go," said the man. "I know you. Are you not the man who was married in a cage of man-eating lions?" "Yes, your honor," replied the culprit. "I am the man." "Exciting wasn't it?" continued the justice. "Well," said the man, judicially, "it was then; it wouldn't be now."

FASHIONABLE WEDDING GOWNS NOW CLEAR FLOOR BY ABOUT FIVE INCHES

Bridal Train, All of Lace, Most Appropriate for June Ceremonies—Bridesmaids Carry Veiled Bouquets—Blue, Citron or Coffee Color Used for "Going-Away" Costume—Trousseau to Last Six Months.

WEDDING gowns are surely flying in the face of tradition this year, for few of them sweep the ground, as a conventional wedding gown has been supposed to do from time immemorial—away from the days of 1820, when short bridal costumes, showing sandaled slippers, were known to be worn. One has become so accustomed, however, to sweeping, trailing satin bridal robes, that one's instinctive propriety is apt to be a wee bit shocked at glimpse of the first modish wedding costume of this 1916 Spring, but after all there is no hard and fast rule about the length of a wedding gown—so long as it is of snowy satin and clouded with a silvery veil and embellished with orange blossoms and pearls, there seems no valid reason why it should not be quite short at the hem if fashion wills it so.

Of course the wedding train remains long. It sweeps downward and outward in the traditional way behind the bride, lending her staidness and dignity—the symbol of her new matrimony estate, as the enshrouding veil is the symbol of her sweet virginity—but the modern wedding train falls from the shoulder instead of the waistline and is often not attached to the skirt at all. Souvenir Idea Removed. With the removal of the long train, after the wedding, the costume becomes a charming white evening frock. A most practical and praiseworthy idea this, for few brides can afford to lay away a costly wedding gown and keep it merely as a souvenir and perhaps an heirloom for the next generation. As for wearing one's wedding gown to festivities after the honeymoon and bearing the burden of the cumbersome

train over one's arm while other young women are dancing comfortably in short skirts, one may do it once or twice, but after that the long-trailed costume is likely to be laid away in lavender. The train of lace is peculiarly beautiful and appropriate for a Summer wedding and its lightness and airiness add to the charm of the gown. Such a train, caught all around the edge to a satin foundation by a heavy white silk cord, sweeps away from a wedding gown just completed for a bride of early June. Over this train of point d'Alençon falls the filmy tulle veil, its turn edged with fine Mechlin. The veil falls to the end of the train and the upper half, turned back from the face, reaches the knees. Face Is Visible. The modern bride wears her veil arranged so that her face is visible, also part of her coiffure. The veil over the face is scarcely seen at all these days. Sometimes the tulle is supported by a bandeau of pearls or orange blossoms; or it may be shirred into a puff which is attached to the hair at the back, rising above the head like a misty halo. A bride of April wore a little lattice-work cap made of pearl beads and across the back of this her veil was fastened. A tulle veil is easier to adjust at the back than a lace one, which is heavier and more likely to drag at its fastenings than the airy tulle. A rather pretty notion is the veiling of wedding bouquets with tulle, for the more tulle about the bride's costume the more levels and mysterious she looks coming up the aisle. At a recent wedding all the bouquets were tulle veiled—the bride's, white orchids and lilies of the valley, having a cloud

the new colored glazed kids, in patent leather with contrasting tops and in washable white kid; pumps, slippers and bodior mules must not be forgotten. Even to gloves, handbags and parasols the bride must be adequately equipped for her future position, for no husband is supposed to buy clothes for his wife for six months at least after the wedding.

The bride is apt to be most deeply concerned about her going-away and traveling costume, after the vital matter of the wedding gown has been settled. Blue seems to be a favored color for "going-away" gowns this season and a few smart models in coffee tone have been recorded. One bride of importance, still standing, appeared in a citron-colored taffeta and citron cloth topcoat to bid goodbyes to her assembled friends. Since hat and buttoned boots were black, the effect was smart indeed, but citron is a shade that admits no rivals in color alongside.

Seagull Perches on Latest Creation of Milliner.

Henry II Collar Is Exclusive, but Only Women With Sloping Shoulders Should Attempt It—Dainty Boots Appear.

WHAT could be lovelier for a Summer day than a seagull hat, a recent creation? The hat itself is of white silk crepe with underbrim of navy blue straw. White grosgrain ribbon encircles the crown and over the front of crown and flat sailor brim spreads a white gull breast. Streamlining away backward from one side of the crown is a long white gull wing, held to the crown under a tailored bow of the white ribbon. One of these hats has been purchased for wear with yachting costume of white mohair accompanied by a natty jacket of navy serge.

The Henry II collar is very smart, but only the woman with sloping shoulders should essay it. A long throat is not as essential as a shoulder that slopes down from the throat, for worn on square, high shoulder, this type of collar will make a figure unpleasantly chunky. The Henry II collar looks like a silk scarf loosely twisted around the neck and left to rest carelessly on the shoulders. A Fremet frock of navy and checked navy-and-white taffeta has a close-fitting bodice with one of those big collars, and looped panniers over the navy silk spread over a rather flaring skirt of the checked taffeta. Collar and panniers are lined with a resilient fabric to insure their continued crispness; the underskirt of navy taffeta is also faced deeply with this light stiffening—whitish—which Fremet and several other couturiers have adopted.

New Suit Materials Out.

New dress and suit materials in linen and cottons follow very closely in weave the woolen materials now in vogue. There is a white cotton gabardine which weaves and appears as almost indistinguishable from the wool, but is lighter and cooler for Summer wear. New white tricotine cotton suitings have apparently the same jersey weave as those of silk and wool and are quite as attractive for Summer sport blouses and suits. These are plain cotton gabardines and also novelty striped gabardines, white with a black stripe, which will be most desirable for beach and country suits this Summer for the matron. The stripe in them is very thin and delicate and gives a certain dash to the fabric. White linens are in various weaves, including the coarser crash and also the new corded linens. These latter come in a medium wood brown and a Labrador blue, very attractive colors for dark linen suits. White pique, in flat hands of corduroy like stripes, is found in the new white fabrics. Palm Beach cloth also has a fine weave without any marking of warp or woof. In one of these, however, the threads themselves are of silk, which gives it a slightly changeable look.

Natural Query.

Baltimore American. "Jones is in the hospital very much run down. Nervous prostration or automobile?"

NEW EGG CONTRIVANCE IS BREAKFAST FEATURE

Light Frame of Silver Adjusted to Plate Has Cuff With Individual Salt and Pepper Cellar for Use in English Style.



THERE have been various devices for the serving of eggs at breakfast, but perhaps a new contrivance is the cleverest and most convenient yet put on the market. Even the woman who loathes boiled eggs but eats them because they are nourishing without being fattening, will enjoy her breakfast egg served in this novel and attractive manner. A light frame of silver fits around the plate and can be removed or adjusted at will. To this frame are attached the three standards—one for salt, one for pepper and the third for the egg cup itself, a silver hook projecting from the egg cup holding the rounded egg spoon. Of course one must eat one's egg in the English fashion from this small cup—that is by clipping off the top and then eating the contents directly from the shell—but everybody who cultivates distinguished manners has learned to eat eggs in this English fashion, whether or not a messy mixture stirred up in a larger egg cup is secretly preferred.

WOMEN FORGE TO FRONT IN EVENTS CHRONICLED BY PRESS AND CAMERA

Prettiest of Younger Set in Society at Washington Is Much Entertained—Daughter of Late Charles H. Coster Is Engaged to Austrian Count.



Catherine Pace.



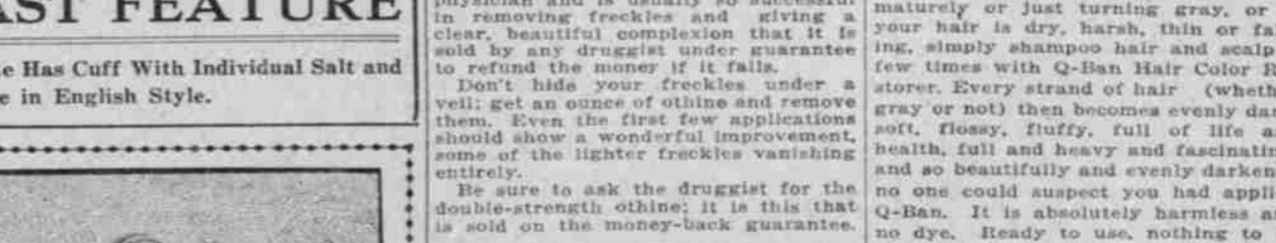
Nancy O'Donoghue.



Maude Coster.



Isabelle Pearson.



Suzanne E. Warren.

CATHERINE PACE has been one of the prettiest of the younger set in Washington society. She has been much entertained during the past season. Miss Pace is the daughter of Lewis D. Pace. MAUDE COSTER, daughter of the late Charles H. Coster, of New York, will marry Count Otto Salm-Hoogstraeten, of Austria. Her father was a member of the Morgan banking-house. Her mother belonged to the well-known Pell family. One of the prettiest of the recent visitors to New York and Washington is Isabelle Pearson, of Buenos Ayres. She is the daughter of Mr. and Mrs. Samuel Hale Pearson and her father is one of the richest men in the wealthy Argentine. Olive Thomas, who is a leading member of the Ziegfeld Follies, is one of the prettiest as she is one of the cleverest of the younger show girls. Miss Thomas has more admirers than any other show girl in New York. When she went to Palm Beach this Winter a society paper said she created a sensation not more among the men than among their wives. Miss Thomas has her choice of many motor cars to ride in and any restaurant in New York at which to dine. She spends most of her time, however, in a pretty little flat where she has a tiny gas stove on which she cooks her own supper when she is in the mood for cooking. Suzanne Warren, daughter of Mr. and Mrs. Charles Elliott Warren, of

new soft cloth, like an improved divetyn, with a checkboard pattern, which each one of the French houses has used and which the American houses have taken up with enthusiasm for the early Spring. It comes more in black and white than any other one color, but there are excessively good looking suits of it in blue and cream and brown and yellow. Cats and Needles. (From Popular Science Monthly.) Cats seem to have a habit of swallowing needles. When a cat is brought to a veterinary hospital suffering with cough the doctor always looks for a needle. In one instance Dr. Childs, of New York, operated on a cat to remove what he thought was an ordinary needle. He found a hatpin nine inches long. But the cat's life was saved.

There are enough serge suits and gowns on every day to prove that the fabric is not out of fashion, but a thin fabric of gabardine with a slight twill in it is placed a bit above serge in the order of new fashions. Both of these materials are used for frocks and for skirts and coats, but there is a new soft cloth, like an improved divetyn, with a checkboard pattern, which each one of the French houses has used and which the American houses have taken up with enthusiasm for the early Spring. It comes more in black and white than any other one color, but there are excessively good looking suits of it in blue and cream and brown and yellow. Cats and Needles. (From Popular Science Monthly.) Cats seem to have a habit of swallowing needles. When a cat is brought to a veterinary hospital suffering with cough the doctor always looks for a needle. In one instance Dr. Childs, of New York, operated on a cat to remove what he thought was an ordinary needle. He found a hatpin nine inches long. But the cat's life was saved.

HAIR GRAY? THEN APPLY Q-BAN

FRECKLES It Darkens Gray Hair Evenly. No Dye—Harmless.

Actually does—so you can see it with your own eyes—turn every gray hair to your head beautifully dark. If your hair is gray, streaked with gray, prematurely or just turning gray, or if your hair is dry, harsh, thin or falling, simply shampoo hair and scalp a few times with Q-Ban Hair Color Restorer. Every strand of hair (whether gray or not) then becomes evenly dark, soft, lustrous, fluffy, full of life and health, full and heavy and fascinating, and so beautifully and evenly darkened no one could suspect you had applied Q-Ban. It is absolutely harmless and no dye. Ready to use, nothing to be added. Give it a trial. 50c for a big bottle at Huntley's Drug Store, 4th and Washington Sts., Portland, Or. Out-of-town folks supplied by mail.—Advertisement.

Gray, Faded Hair Made Any Natural Color

No matter how gray, faded, streaked or lifeless your hair may be, La GOUTTE-a-GOUTTE will restore it to any desired shade of black, brown, dark chestnut, or any other color. NO APPLICATION AND NO AFTER SHAMPOO IS NECESSARY and your hair will be soft and glossy, with a lovely, lasting, natural color that will neither fade nor rub off on your hands. La Goutte-a-Goutte does not discolor the scalp. Is Sold and Applied in All First Class Hairdressing Establishments. A hairdresser can color your hair satisfactorily only by using La Goutte-a-Goutte, so please insist on this when you are coloring. La Goutte-a-Goutte. I have written an interesting and instructive illustrated pamphlet on the hair and scalp. A copy of which will be mailed FREE to anyone on request. L. PIERRE VALLIGNY, Room 11 14 East 44th St., New York

Mary T. Goldman's Gray Hair Restorer

conveys the original color to gray and faded hair and will leave the hair clean, fluffy and natural. On hand at all dealers; or direct from laboratory, express prepaid, on receipt of \$1.00. Trial bottle free. Mention original color. (53) Remember the name: Mary T. Goldman and avoid imitations. Mary T. Goldman, Goldman Bldg., St. Paul, Minn.—Adv.

TODAY'S BEAUTY TALK

You can make a delightful shampoo with very little effort and for a very trifling cost, if you get from your druggist a package of cantrox and dissolve a teaspoonful in a cup of hot water. Your shampoo is now ready. Just pour a little at a time on the scalp and rub briskly. This creates an abundance of thick, white lather that thoroughly dissolves and removes the dandruff, excess oil and dirt. After rinsing, the hair dries quickly, with a fluffiness that makes it seem heavier than it is, and takes on a rich luster and a softness that makes arranging it a pleasure.—Adv.

Hairs Quickly Vanish After This Treatment

(Helps to Beauty) Science has aided in simplifying the banishing of hairy growth from the face, and according to a beauty specialist, the most effective treatment yet devised consists of applying a delicate paste to the hairy surface for 2 or 3 minutes. The paste is made by mixing some water with a little powdered delatone. When this paste is removed and the skin washed every trace of hair has vanished. Be sure to get real delatone.—Adv.