



"America's Most Sanitary and Economical Gas Ranges"



No Stove Blacking Required—Cleans Like a China Plate

## Announcing the Spring Showing of the Famous A-B Gas Ranges

Here is great good news: We are ready with the new models of the A-B Gas Range line. This means that hundreds of homes will be made happy, for the new models are the most beautiful and the most complete that the factory has ever produced. The A-B Gas Ranges are the most popular in all the world; they have a host of friends from coast to coast. The A-B Gas Ranges are totally different from the ordinary

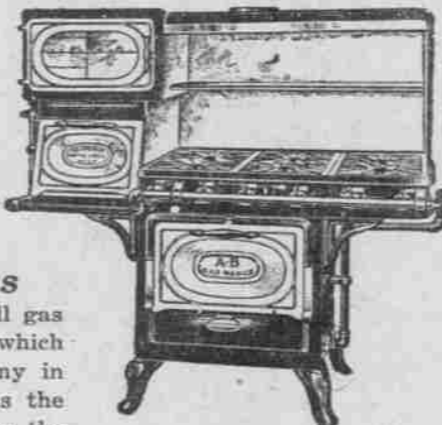
old-style gas consumers. The A-B line is the most beautiful, the most sanitary, the most economical, the most durable, the easiest to clean. You will enjoy inspecting the A-B line. Come and see the automatic lighter, the patented gas valve, the rustproof finish and scores of other features that make the A-B the peer of them all, and don't overlook the fact that the A-B saves you 25 per cent on your gas bill.



\$1.00 a Week

### Special \$5.00 Offer

By special arrangement with the A-B Stove Company we are permitted, for a limited length of time, to allow \$5 on any used low or top-oven gas range in exchange for an A-B Sanitary. A liberal allowance made for your old range or heater in exchange for an A-B.



We Charge No Interest

### Costs No More Than Inferior Ranges

Notwithstanding the fact that the A-B Gas Range is the peer of all gas ranges, the fact remains that they cost no more than other ranges, which possess none of the splendid A-B features. There is true economy in buying an A-B Sanitary. Economy in the first cost—and then as the months go by, a steady, appreciated saving in the gas bill. In time the gas saving will pay the initial outlay.

## High-Quality Wilton Rugs

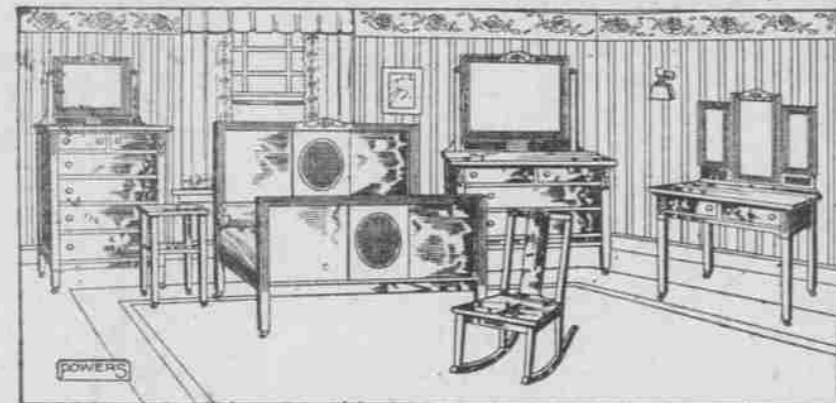
No season when they were so beautiful, so varied in design and color, nor when a larger assortment was made ready for your selection.

Anglo-Persians	Herati and Ardibel
27x54 Wilton Rugs offered at.....	8x8 Wilton Rugs offered at.....
\$ 7.00	\$42.00
36x63 Wilton Rugs offered at.....	8-5x10-6 Wilton Rugs offered at.....
\$11.25	\$61.75
46x7-6 Wilton Rugs offered at.....	12x12 Wilton Rugs offered at.....
\$23.25	\$68.00



## Linoleums and Drapery Materials

8c Printed Linoleums in new Spring patterns, on your floor, the yard.....	60c
\$1.00 grade Printed Linoleum of extra quality and thickness, on your floor at the yard.....	75c
11.50 Inland Linoleum in checks, wood floor and small designs, on your floor at the yard.....	\$1.17
7c Figured Madras, mulberry, green or brown, the yard.....	48c
15c Scotch Lappet, for kitchen or bath curtains, the yard.....	9c
50c Cream Scrim, with colored overdraperies attached, the yard.....	35c
20c Ecru Scrim, with drawn-work border, the yard.....	14c



## The Famous J. McNeil Whistler Bedroom Suite—Four Pieces

Ivory Enamel—Walnut

\$120 Value for \$98.50  
\$10 Cash—\$2 Week

Here is, without question, one of the biggest values in Chamber Furniture offered in months. A beautifully designed suite, splendidly made, with a smooth eggshell finish, in your choice of two woods. Study the beautiful design, which is an example of the genius of James Whistler. Note the elegance and simplicity of the suite, and remember to compare it with others you have seen at a much greater price. Suite consists of bed, dresser, dressing table and chiffonier.

Any Three Pieces \$73.85—Any Two Pieces \$49.75

Powers Main Floor

## VICTROLA

Showrooms the Most Comfortable in the City

Just forty feet from the main entrance, beautifully furnished, well ventilated and designed for your comfort.

Take a whole year to pay for this Victrola outfit \$86.30

Victrola as Shown, Seven Record Albums, Eight 10-in. Double-Speed Records—Sixteen Selections—700 Needles, Record Cleaner.

## Wicker Furniture

For Porch or Indoor Use

Wicker Furniture is furniture of double utility. Ideally adapted for outdoor use, more and more in recent years it has come to be used indoors as well. We have some particularly fine pieces now on show which will be selling at a very moderate price throughout the week.

A COMPLETE SHOWING OF GRASS, FIBER AND REED.

Automatic, Self-Locking, Adjustable

## Dress Forms

\$1 Down, 50c Week

Why pay from \$17 to \$25 for a dress form, when a form superior can be had at this special price? Each section is equipped with a self-locking device—each section locks itself into place. All adjustments are independent of each other and can be made to conform to all shapes and proportions, as well as to all changes of style, no matter how radical they may be.

Price . . . \$12.50

## This Big \$19.75 Solid Oak Buffet Specially Priced at \$12.90

A Solid Oak Buffet at a price less than fir. Built on good lines and appropriate for apartment or home use. It has a large mirror, double-door compartment, long linen drawer and two small drawers, one lined for silver. Don't overlook the price.

Reed Hood Carriage

Hand-made body, enameled in ivory, full spring seat and large flaring pusher bar, for \$19.85

Sturgis Go-Cart Special

Beautifully finished and fitted with storm-cloth hood which will not crack. One motion folding. \$11.65

## Sealy Mattresses

Guaranteed for Twenty Years

# POWERS

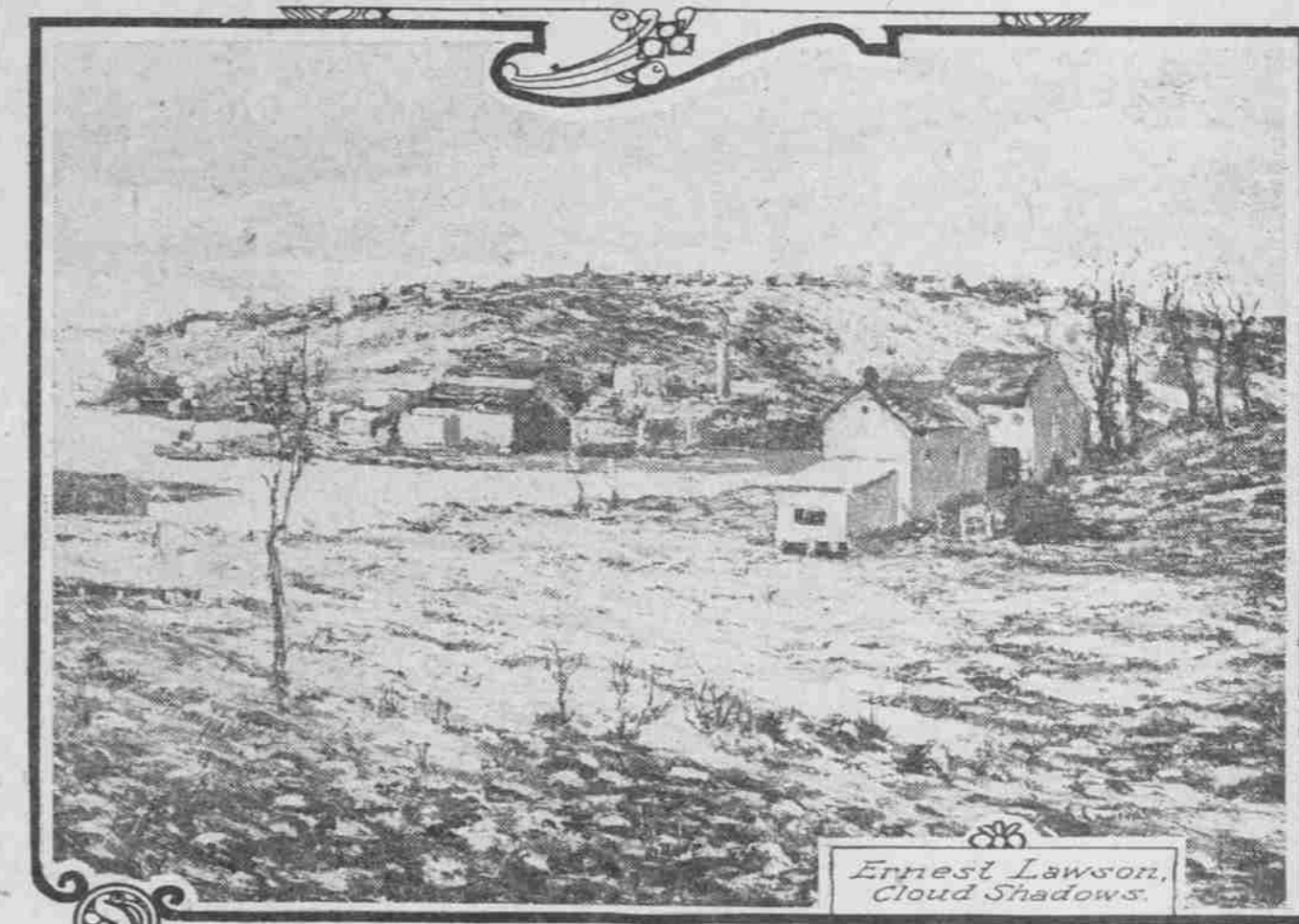
QUALITY FIRST

USE YOUR CREDIT

THIRD & YAMHILL

## ART APPEALING TO EVERY TASTE IS ON DISPLAY NOW AT MUSEUM

Best Oils From San Diego Exposition Are Here en Route to East and Subjects Are Taken in Most Instances From Everyday Life of City and Woodland.



George Bellows, Men of the Docks.

BY EDITH KNIGHT HOLMES.  
BRILLIANT colors, daringly applied, are noted in the exhibition at the Portland Art Museum, which opened early last week and will continue until April 24—Easter Monday.

The pictures shown in the collection are excellent and interesting examples of the modern movement in art. They are vivid, colorful and pleasing. But they aren't extreme. Even the uninitiated can appreciate them and will not need an explanation of what he sees.

This exhibit was shown at the San Diego Exposition and is now on its way to its home in the East. The pictures are all New York men of the modern school, nearly all of them being comparatively young. Some were pupils of Robert Henri, one of the best-known men of the present day art world.

On entering the gallery the eye first is caught by Ernest Lawson's "Cloud Shadows," a large painting depicting an ideal hamlet near the sea. Overhead are the great flying clouds which cast deep shadows on the landscape, intensifying the green of grass and shrubbery and giving the picture its title.

Doak Scene is Lifelike.  
"The Boathouse in Winter," a snowscape with sparkling atmosphere and showing in the distance the City College of New York, is another Lawson picture that is sure to attract. "The Hill at Inwood" is another, rich in coloring.

George Bellows has pictured on a large canvas a dock scene in New York harbor. Men busy with their work, dray horses standing ready to haul the load, boats, tugs, the smoke of the big city—all are faithfully reproduced in a strong style full of feeling. "New York," another scene in the heart of the busy metropolis, is full of action. Bellows' other offering is a night scene, "The Approach to the Bridge."

The great awe, the loneliness of a strange city is experienced by those who "get" the message of this painting. Of different type is "The Little Girl in White," a pleasing picture of youth.

Irish Child Picture Allures.  
William Glackens has handled his outdoor scenes of "Summer in Long Island," "A Cape Cod Shore" and "Skating in Central Park" in a delightful manner. There is action and fine color work in all the shows.

George Laka has given "Woman With Macaws," "The Theologian," "Phantasy," "Cuban Dancers" and "Children of the Slums." The last is full of pathos. The dancers are bright and gay, full of life; the theologian is dignified, impressive. Shadows in the face at close range are of unusual coloring.

Robert Henri's Irish children have drawn admiring groups of art lovers ever since they were hung in the gallery. There is "Pat," whose eyes, close to, are vivid emerald green, and yet at a few paces they become bright blue. Pat has red hair, painted against a strong rose-colored back-



Childe Hassam, In Brittany.

ground, which may sound startling to those of the old school, but is in fact a happy combination. Another "Irish Lad" has a green setting for his merry, boyish face. Henri's "Irish Lass" has just a hint of solemnity. His "Mary O'R" is a regular girl, healthy and happy in her pink apron. Two Indian studies, "One Tse" and "Tom Po Qui," are rich in color effects, brilliant, strong.

The sea any the sky are depicted in two beautiful paintings by Childe Hassam. "In Brittany" shows a man and a maid. The man appears to be waiting for his answer. The detail of woodland and the distant shrubs with atmospheric effect is charming. "The Beryl Gorge, Appledore," shows rocks, sea and sky and a nude woman looking through the gorge.

Probably the most modern or extreme of all is Carl Sprinchorn's "Gods at Play." Youth splashing in the water is depicted.

A sunny window in "An Interior," "Virginia III," a graceful girl; "Sporting Life," stern, almost brutal character study—these are among the offer-

ings of the young artist, Guy du Bois. Decidedly modern is the theme, "Movies," used by John Sloan, who has shown a crowd gathering round a movie theater, hurrying to the show. His "Chinese Restaurant" is interesting, full of color and life. City and country have been drawn on for inspiration.

The exhibit will remain at the museum for the next two weeks, giving opportunity to all who are interested to see some of the best modern paintings that were shown in the southern exposition.

"Dairymple Heir" to Prison Goes.  
MILWAUKEE, April 2.—It will be five years before the Dairymple estate at Allegheny, Pa., is again claimed by Keith Edward Dairymple, who declares he is the only heir to the millions. Keith was sentenced to serve half a decade in the penitentiary on the charge of forgery. He was arrested in Chicago and said he passed the bogus checks to get money to fight his claim for the fortune.