

SOCIAL ELECT FROLIC IN SMART GARBS AT CORONADO SPANISH BALL



Mrs. A. D. Short, Wife of Lieut. Short, U.S.A.

Martha Andrew Kneedler, Daughter of Major W. L. Kneedler, U.S.A., Retired.

Kneedler's costume was classic and she was one of the most stunning dancers present. Mrs. Short was exceptionally correct in her Spanish senorita costume of gay colors and trappings. The party was one of the most brilliant events in California social history and brought together prominent women and promising girls from all parts of the country. The Coronado Hotel had been converted into a brilliant arena for the social sparring, and a specially built stage within the hotel made it possible for the brilliant costumes to be exploited to best advantage.

NO SEX IN WAR PAY ASKED

French Writer Pleads for Equal Wages for Factory Workers.

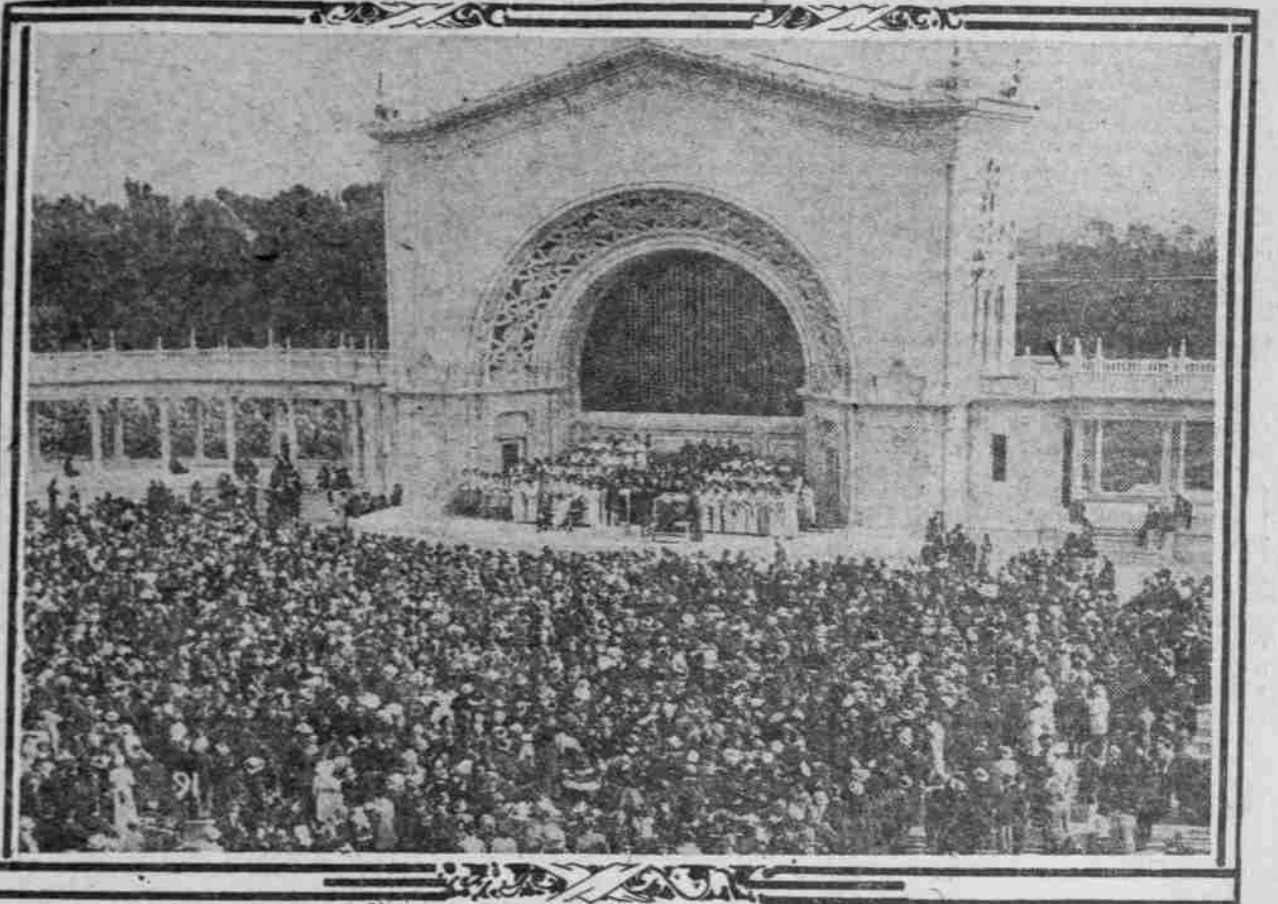
PARIS, France, Feb. 10.—Urban Gohier, in Le Journal, pleads for equal wages for men and women who are workers in France in war time. He comments on the proposed law before the government by which young soldiers employed in offices are to be replaced by women. If this should go into effect the young men sent to the front would replace an army of territorialists who would be liberated to work in the fields and shops.

NBODY CLAIMS WOMAN

Texas Divorcee Tells Sad Story and of Death of Child.

CHICAGO, Feb. 7.—Mrs. Nana V. Haynes, of Nevada, Tex., remains at the psychopathic hospital, unclaimed by relatives. She said that she had been divorced from her husband and that her only child died when small. Her mind does not seem to be clear, however.

DEDICATION OF THE 1916 SAN DIEGO EXPOSITION TO BE HELD MARCH 18



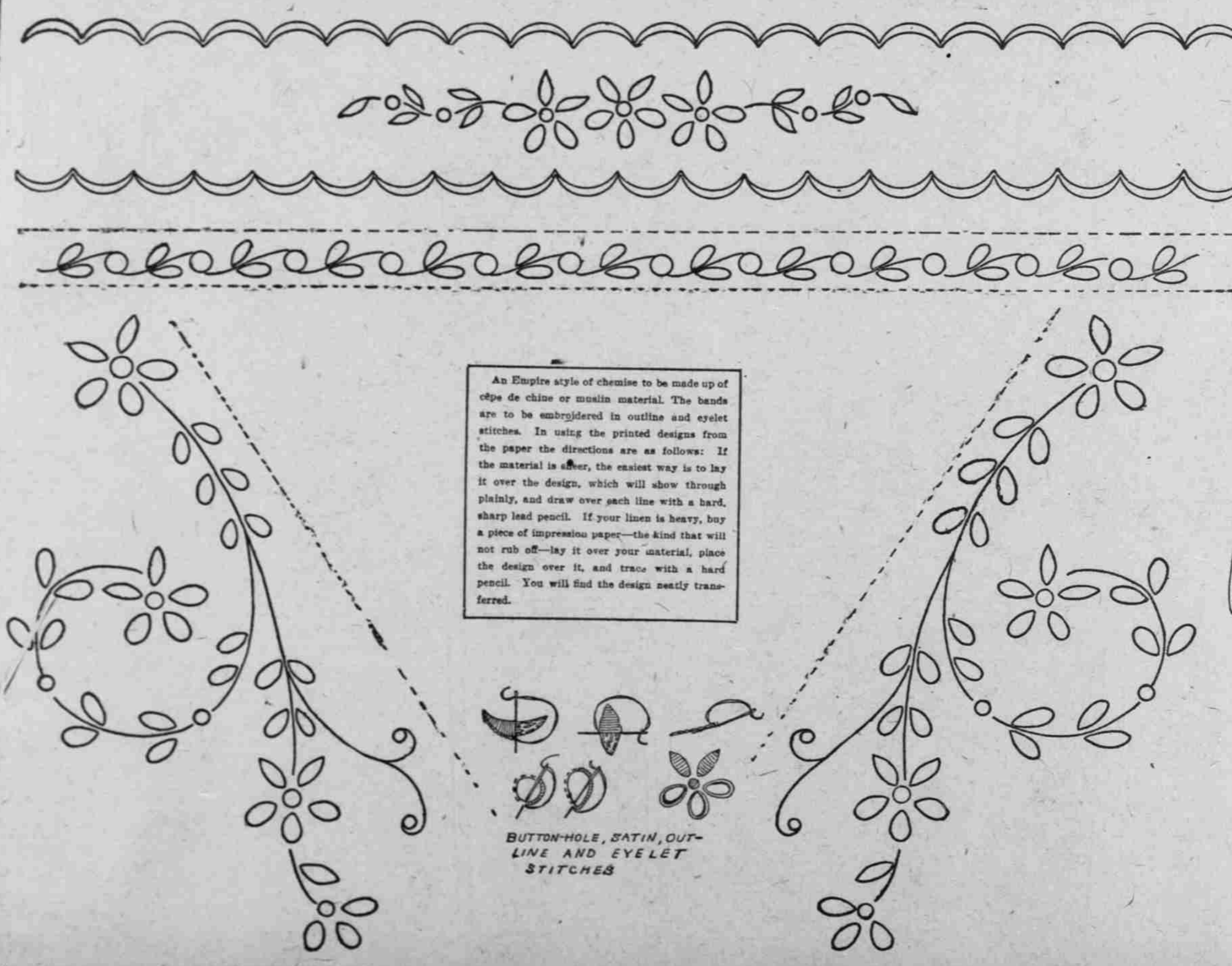
Sunday Scene At San Diego Exposition Showing World's Greatest Out Door Pipe Organ

SATURDAY, March 18, 1916, will be a red letter day for San Diego and the Southwest. This is the date just decided upon for the formal dedication of the big 1916 exhibition. All the best features of the 1915 exposition remain, and in addition to these have been added the exhibits of 16 nations, and scores of commercial exhibits which have caused an overflow that cannot be accommodated even with the construction of new buildings. The increase in scope has caused the new board of directors to make the name of the 1916 enterprise the Panama-California International Exposition.

THE Spanish costume ball at Coronado Beach in California a few weeks ago brought together a grand array of prominent women, among whom was a Portland girl, Nan Fennoyer Russell, whose engagement and wedding plans were announced al-

most immediately following the direct outcome of the ball. Two of the strikingly costumed women at the ball were Mrs. A. D. Short, wife of Lieuten-

EMBROIDERED CHEMISE FOR SPRING AND SUMMER WEAR



An Empire style of chemise to be made up of cöpe de chine or muslin material. The bands are to be embroidered in outline and eyelet stitches. In using the printed designs from the paper the directions are as follows: If the material is sheer, the easiest way is to lay it over the design, which will show through plainly, and draw over each line with a hard, sharp lead pencil. If your linen is heavy, buy a piece of impression paper—the kind that will not rub off—lay it over your material, place the design over it, and trace with a hard pencil. You will find the design neatly transferred.

BUTTON-HOLE, SATIN, OUT-LINE AND EYELET STITCHES



M. C. Frick, the "Coke King," has two hobbies—music and pictures.

Call on a Neighbor. Baltimore Sun. An old Scotswoman, who, at considerable personal inconvenience, had gone a good way to visit a friend who was ill, learned on her arrival that the alarming symptoms had subsided. "Ah! hoo are ye the day, Mrs. Crawford?" she inquired in breathless anxiety. "Oh, I nearly well noo, thank ye, Mrs. Graham." "Nearly well!" exclaimed the breathless visitor. "After me comin' sae far to see ye, loo!"

in bringing about a surplus above the operating expenses, is at the head of the new organization for 1916. President Davidson is actively in charge and devotes his time to exposition activities without any compensation. Music will be one of the big features of the special events plan for the year and the officials announce that more hands will be employed on the exposition grounds than at any period during the San Francisco exposition. Two Government bands now give daily concerts and at least three more have been promised in addition to the musical organizations contracted for by the exposition. The largest outdoor organ in the world, the gift of John D. and A. R. Spreckles, gives daily concerts, rain or shine, and Dr. H. J. Stewart is proving as popular with the organ audiences of the new year as in the 13 months just passed. While new exhibits are being placed and Isthmus attractions are organizing to please the tickle fancy of the public, the usual admission charge has been reduced one-half.

Fun Isthmus to Open March 4. The Isthmus which housed the amusement features will be better than the past year, and the half-mile of paved street will be the home of many of the best attractions from the San Francisco exposition as well as amusements new to all expositions. The formal opening of the new Isthmus will be held Saturday, March 4. As a recognition of leap year, and possibly the first exposition ever held in leap year, the exposition directors have christened one of the beautiful courts as "The Court of Leap Year." In this enclosure, enhanced by fountains, cozy corners, cupids and a wealth of flowers, young women visitors to the exposition will hold sway. All dances here will be leap-year dances—all music will be that to appeal to a feminine fancy, and in this house "Newlyweds" and "Honeymooners" will receive suitable greetings. President Davidson Retained. President G. A. Davidson, who was president of the 1915 exposition, and who was one of the strongest factors

was not sufficient instruction and entertainment; and even in the one phase of international participation the exposition had made no promise. But with 1916 the defect has been remedied, and the word "International" goes into the title of the enterprise. One of the most successful features of last year's exposition was the model farm where every phase of farming activity was given consideration. It was a ten-acre tract with buildings, truck garden, orange, lemon and grapefruit grove, poultry and stock. It is needless to say that the condition of crops, stock and all details will be better than last year.

Other Nations Participate. Other nations participating on a large scale are Russia, The Netherlands, Switzerland, Spain, Portugal, Germany, Austria, Brazil, Pan-Pacific countries, Japan, Persia and India. With the addition of strong foreign participation, the one apparent weakness of the 1915 exposition has been remedied. No visitor of the 2,500,000 who passed through the gates even hinted that the exposition grounds and buildings were not beautiful—in fact more attractive than imagination could have pictured them. There was no complaint that there