

CONGRESS TO BEGIN SESSION TOMORROW

Predominating Issue of Defense Complicated by Revenue Problems.

PARTY LINES ARE DRAWN

Democrats Have Only 24 Majority in House—Republicans Will Endeavor to Restore Protective Tariff Rates.

WASHINGTON, Dec. 4.—National defenses and the means of providing money to carry out the administration plans admitted to be the chief problems which the 64th Congress will face when it assembles at noon Monday.

Democratic leaders who had hoped to make military preparedness a non-partisan question are not confident of success, notwithstanding the widespread endorsement given President Wilson's program by prominent members and organizations affiliated with minority parties.

Certain Republican leaders have indicated they are ready to make political capital of the Democratic dilemma should the party in power find itself compelled to resort to a bond issue or any of the tariff measures hitherto considered by them.

President Wilson will outline the salient needs of the country in a personal address to Congress Tuesday, after which committees will be organized and actual legislative grinding initiated.

The President's first communication probably will concern chiefly the needs of the Army and Navy, giving special attention to revelations and responsibilities growing out of the European war, and what may be done to finance a plan of preparedness to assure continuing safety of the Nation.

The new Congress is still Democratic, but not so overwhelmingly as it has been on previous occasions when President Wilson addressed it.

Wilson to Discuss Needs. President Wilson will outline the salient needs of the country in a personal address to Congress Tuesday, after which committees will be organized and actual legislative grinding initiated.

The President's first communication probably will concern chiefly the needs of the Army and Navy, giving special attention to revelations and responsibilities growing out of the European war, and what may be done to finance a plan of preparedness to assure continuing safety of the Nation.

The new Congress is still Democratic, but not so overwhelmingly as it has been on previous occasions when President Wilson addressed it.

Wilson to Discuss Needs. President Wilson will outline the salient needs of the country in a personal address to Congress Tuesday, after which committees will be organized and actual legislative grinding initiated.

The President's first communication probably will concern chiefly the needs of the Army and Navy, giving special attention to revelations and responsibilities growing out of the European war, and what may be done to finance a plan of preparedness to assure continuing safety of the Nation.

The new Congress is still Democratic, but not so overwhelmingly as it has been on previous occasions when President Wilson addressed it.

Wilson to Discuss Needs. President Wilson will outline the salient needs of the country in a personal address to Congress Tuesday, after which committees will be organized and actual legislative grinding initiated.

The President's first communication probably will concern chiefly the needs of the Army and Navy, giving special attention to revelations and responsibilities growing out of the European war, and what may be done to finance a plan of preparedness to assure continuing safety of the Nation.

The new Congress is still Democratic, but not so overwhelmingly as it has been on previous occasions when President Wilson addressed it.

Wilson to Discuss Needs. President Wilson will outline the salient needs of the country in a personal address to Congress Tuesday, after which committees will be organized and actual legislative grinding initiated.

The President's first communication probably will concern chiefly the needs of the Army and Navy, giving special attention to revelations and responsibilities growing out of the European war, and what may be done to finance a plan of preparedness to assure continuing safety of the Nation.

The new Congress is still Democratic, but not so overwhelmingly as it has been on previous occasions when President Wilson addressed it.

Wilson to Discuss Needs. President Wilson will outline the salient needs of the country in a personal address to Congress Tuesday, after which committees will be organized and actual legislative grinding initiated.

The President's first communication probably will concern chiefly the needs of the Army and Navy, giving special attention to revelations and responsibilities growing out of the European war, and what may be done to finance a plan of preparedness to assure continuing safety of the Nation.

The new Congress is still Democratic, but not so overwhelmingly as it has been on previous occasions when President Wilson addressed it.

Wilson to Discuss Needs. President Wilson will outline the salient needs of the country in a personal address to Congress Tuesday, after which committees will be organized and actual legislative grinding initiated.

The President's first communication probably will concern chiefly the needs of the Army and Navy, giving special attention to revelations and responsibilities growing out of the European war, and what may be done to finance a plan of preparedness to assure continuing safety of the Nation.

The new Congress is still Democratic, but not so overwhelmingly as it has been on previous occasions when President Wilson addressed it.

WORK IN BRIEF AHEAD OF FIRST SESSION OF THE 64TH CONGRESS, WHICH BEGINS TOMORROW.

Legislation the Democratic Majority Will Insist on Enacting, Appropriation Measures Being Approved. National defense—Army appropriation bill, \$170,000,000; Navy appropriation bill, \$200,000,000; fortification appropriation bill, \$8,000,000; increase in number of students at the West Point Military Academy and at the Naval Academy.

LANE MAY GO ON BENCH

INTERIOR SECRETARY MENTIONED FOR SUPREME COURT.

Congress May Be Asked to Permit Retirement of Justice Lamar on Account of Illness.

WAR VICTIM REACHES HOME

Man Who Escaped Two Submarine Attacks Visits Mother in Kelso.

LAUNCH FIRE BREAKS OUT

Damage to Flora and Cargo at Woodland Estimated at \$750.

PIONEER WOMAN IS 95

BIRTHDAY OF "GRANDMA" SMITH CELEBRATED AT AUMSVILLE.

GET RID OF HUMORS AND AVOID DISEASE

Humors in the blood cause internal derangements that affect the whole system, as well as pimples, boils and other eruptions.

WHY "AN-URIC" IS AN INSURANCE AGAINST SUDDEN DEATH

Sufferers From Backache, Rheumatism and Kidney Trouble

Before an Insurance Company will take a risk on your life the examining physician will test the urine and report whether you are a good risk.

It is disconcerting to find, as hot water melts sugar, besides being absolutely harmless, will test the urine and report whether you are a good risk.

It is disconcerting to find, as hot water melts sugar, besides being absolutely harmless, will test the urine and report whether you are a good risk.

It is disconcerting to find, as hot water melts sugar, besides being absolutely harmless, will test the urine and report whether you are a good risk.

It is disconcerting to find, as hot water melts sugar, besides being absolutely harmless, will test the urine and report whether you are a good risk.

It is disconcerting to find, as hot water melts sugar, besides being absolutely harmless, will test the urine and report whether you are a good risk.

It is disconcerting to find, as hot water melts sugar, besides being absolutely harmless, will test the urine and report whether you are a good risk.

It is disconcerting to find, as hot water melts sugar, besides being absolutely harmless, will test the urine and report whether you are a good risk.

It is disconcerting to find, as hot water melts sugar, besides being absolutely harmless, will test the urine and report whether you are a good risk.

OREGON SCHOOLS LEAD

RURAL CREDIT SYSTEM PRAISED BY FEDERAL OFFICIAL.

Dr. P. P. Claxton Says Washington Plan of Providing Farms for Teachers Is Ideal Condition.

OREGONIAN NEWS BUREAU, Washington, Dec. 4.—Oregon leads all states of the Union in giving school credit for industrial work done in the home.

But, not only are we sure of service—we are equally sure of our merchandise, featuring, because of exceptional merit,

With the Guarantee that ensures pure-wool fabrics, London shrunk by cold-water process, hand-tailored and silk-sewed. We want you to see them.

"Look for the Guarantee and Price Ticket on the Sleeve."

Corner Fourth and Alder Streets.

A shell weighing about 20 pounds extends into a shore of 1200 pieces.

WE PRIDE ourselves upon the point that many of our new customers are sent here by the old ones.

YOU know what that means—no man recommends what he does not believe in—and belief in us, as well as what we sell, is amply demonstrated by our sure, steady growth.

But, not only are we sure of service—we are equally sure of our merchandise, featuring, because of exceptional merit,

With the Guarantee that ensures pure-wool fabrics, London shrunk by cold-water process, hand-tailored and silk-sewed. We want you to see them.

"Look for the Guarantee and Price Ticket on the Sleeve."

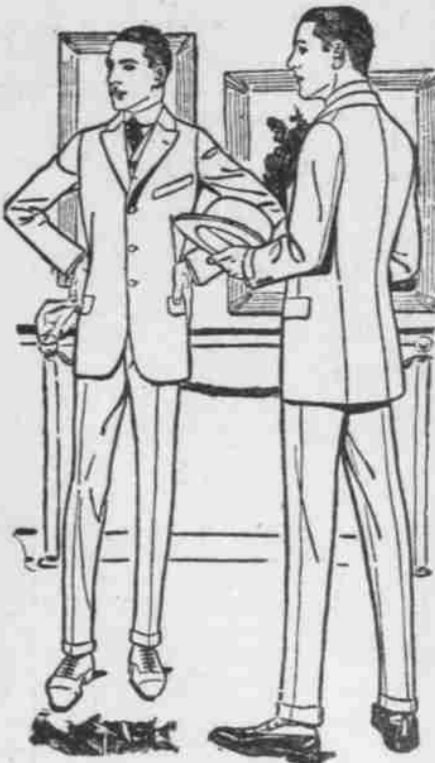
Corner Fourth and Alder Streets.

A shell weighing about 20 pounds extends into a shore of 1200 pieces.

With the Guarantee that ensures pure-wool fabrics, London shrunk by cold-water process, hand-tailored and silk-sewed. We want you to see them.

"Look for the Guarantee and Price Ticket on the Sleeve."

Corner Fourth and Alder Streets.



Buy Gifts Now—Pay Next Year

You are invited to investigate our system of extending, accommodating, helpful credit.

Goods Purchased Now Will Be Held Until Christmas. If you have an account here, add your gift purchases without additional payment. Then arrange for delivery later.

Big Sale of Holiday Gifts at Edwards

A Wonderful Furniture-Buying Opportunity for Home Furnishers and Holiday Shoppers.

Practical Gift Hints for Wife, Husband, Son and Daughter

ALL YOU NEED PAY IS \$1.00 WEEKLY

Morris Chair. The push-button kind, solid oak in light golden finish, with either velvet or brown imitation leather cushions. Splendid holiday value at \$17.50.

Colonial Desk. As pictured above—rich mahogany veneer, full-length drawer, well-arranged interior, splendid holiday value at \$19.50.

Mission Desk. Quartered Oak Lady's Desk, finished in light golden wax, substantially built. Roomy writing surface. Priced \$11.95.

Pedestal. Wax golden oak or light or dark finished. Height 31 inches, top 12 inches square. Pretty, practical style. Christmas special \$3.95.

Footstool. The one pictured here may be had in any finish. Covered with genuine Span-\$1.98.

Child's Desk and Chair. Genuine oak in rich golden finish. Top of desk 18 x 22 inches. Top raises to get at inside. Chair is very strongly made. A splendid value for the two pieces, which are regularly priced at \$4.50.

Dining Tables for Little Tots. These were specially made to gladden the hearts of little folks on Christmas morning. Dull golden finish. Special price \$1.50.

"KALTEX" FOR HER GIFT. Tapestry-Covered Chairs and Rockers.

Rocker \$17.95. Chair \$16.95. Individuality and charm distinguish this class of furniture. Stained brown finish with pockets in arm. Just the thing for sewing or reading. Softly padded back and long-cushion seat of beautiful tapestry. A new assortment just arrived for holidays.

A Wonderful Assortment of Overstuffed Rockers

Now Here for Gift Selections—\$13.50 to \$187.50. LEATHER—TAPESTRIES—DENIMS

A low, broad and massive rocker. Is luxuriously upholstered in brown Spanish leatherette. A special holiday value at \$13.50.

This fine Rocker shows here is not expensive, yet high grade. Shown in brown Spanish leatherette. A special holiday value at \$25.00.

Entirely upholstered in durable brown Spanish leather—spring back, specially constructed, loose-cushion seat. One of our best holiday values at \$48.00.

High-Back Chair or Rocker. A very plain and pleasing design. This chair may be purchased at this price in an assortment of tapestries which will best suit your other furnishings. Holiday value at \$32.50.

This Low Arm Chair, exactly as pictured, covered with figured denim over high-grade upholstery. Priced for \$29.25 Christmas at.

MUSIC CABINETS AT COST. Reduced as follows: \$8.00 to \$5.95; \$11.00 to \$7.90; \$11.50 to \$8.65; \$14.00 to \$10.95; \$18.50 to \$13.85; \$26.00 to \$19.65.

