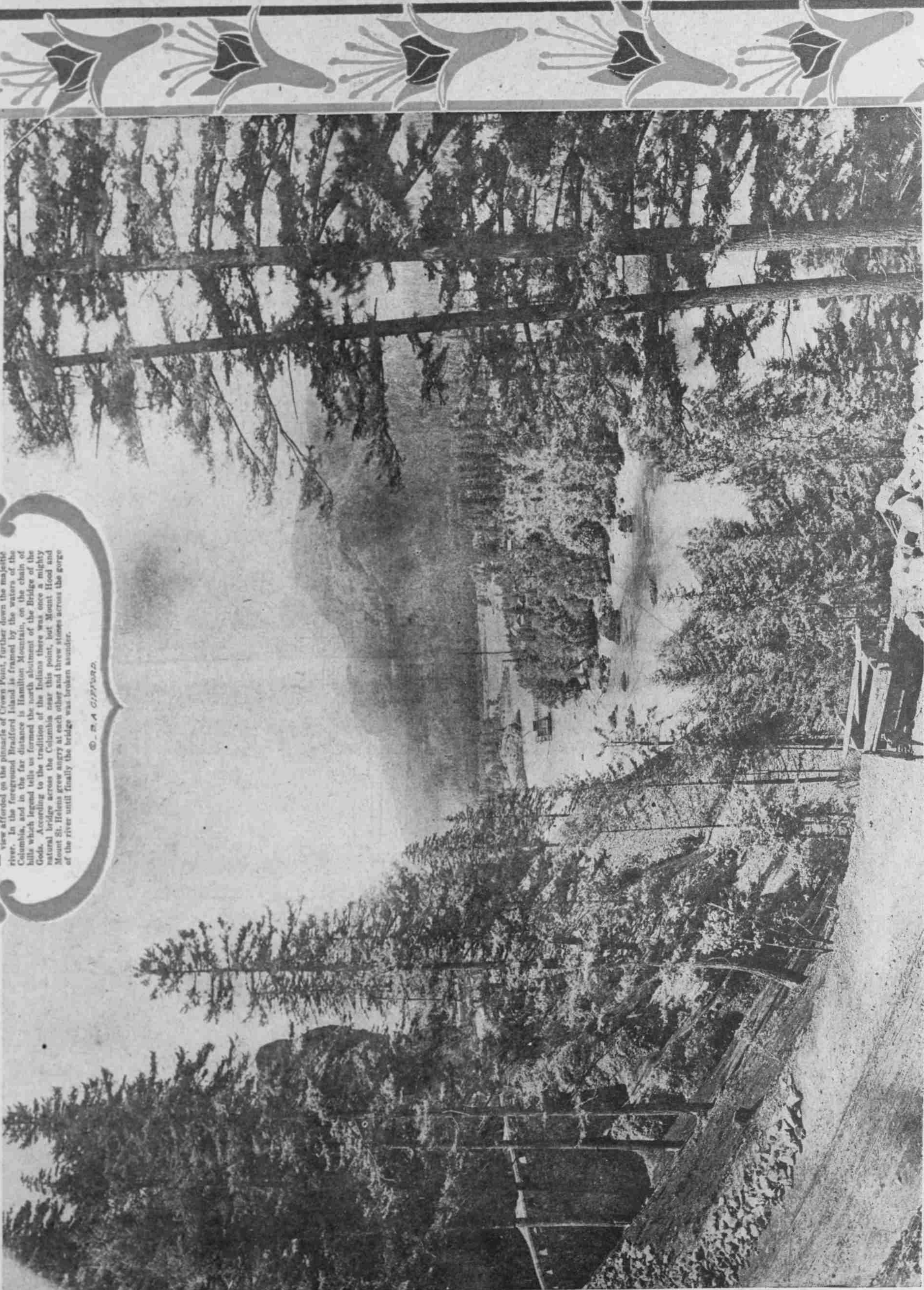




**COLUMBIA RIVER HIGHWAY
NEAR BONNEVILLE.
BRADFORD ISLAND AND HAMILTON MOUNTAIN,
IN DISTANCE.**

IN DRIVING over the Columbia River Highway from Hood River toward Portland there is one point of vantage near the site of the world's largest fish hatchery at Bonneville that compares with the wonderful landscape view afforded on the pinnacle of Crown Point, farther down the majestic river. In the foreground Bradford Island framed by the waters of the Columbia, and in the far distance is Hamilton Mountain, on the chain of hills which legend tells us formed the north abutment of the Bridge of the Gods. According to the tradition of the Indians there was once a mighty natural bridge across the Columbia near this point, but Mount Hood and Mount St. Helens grew angry at each other and threw steeples across the gorge of the river until finally the bridge was broken asunder.

©. R. A. GIPSYARD.



A. BURR.