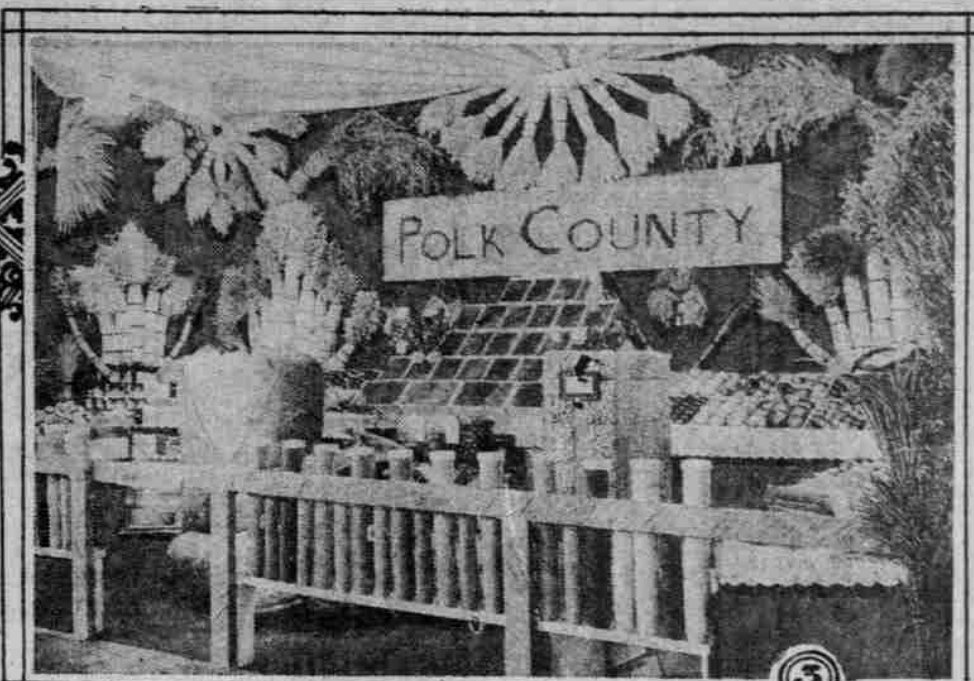
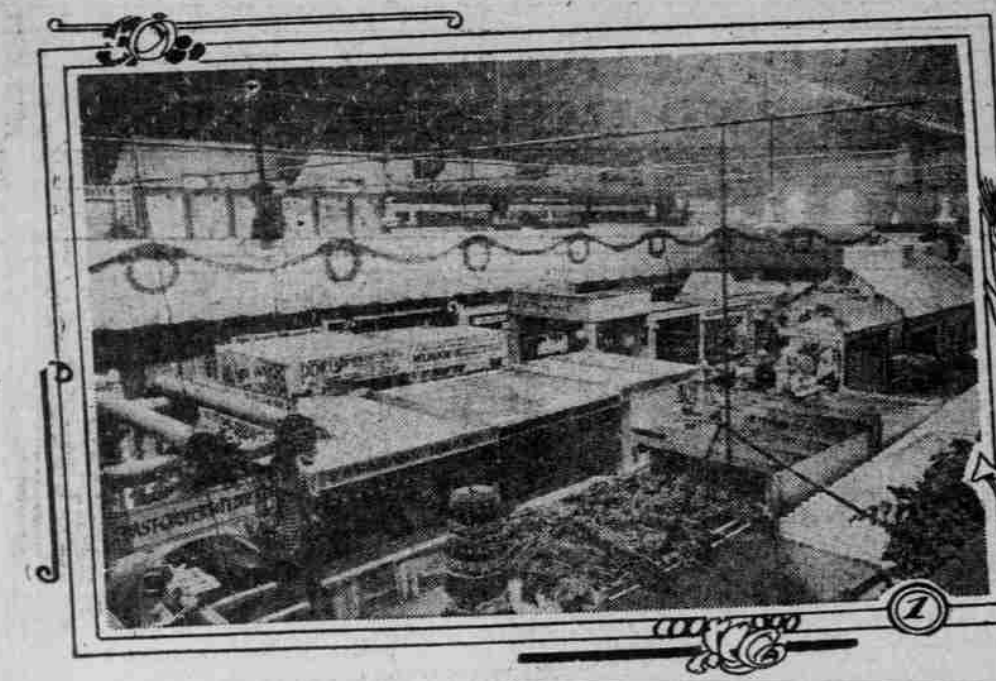


GLORY OF OREGON'S BIG SHOW IS TO SHINE EVEN BRIGHTER

Successes of Opening Week to Be Excelled and Varied Array of Prizes Is Offered for Benefit of Visitors.



MANUFACTURERS' AND LAND PRODUCTS SHOW, SEVENTH ANNUAL PROGRAMME, WEEK NOVEMBER 1 TO 6.

Monday, November 1.
Manufacturers' day, A. J. Kingsley, chairman; Elks' night, K. K. Kubli, chairman; Klamath Falls, Ashland, Grants Pass, Medford day.

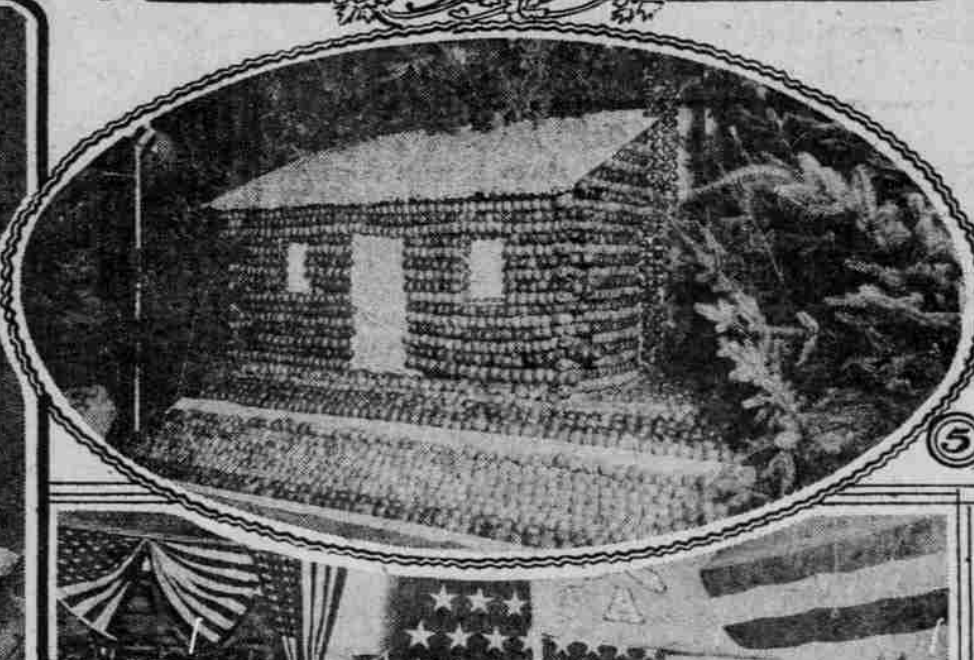
Tuesday, November 2.
O.-W. R. & N. day, Eugene, Eugene and Albany day, R. H. Crozier, chairman.

Wednesday, November 3.
Japanese day, Y. Nakaya, chairman.

Thursday, November 4.
Loop day; McMinnville day; old-fashioned baby show, Mrs. Maude Burley, chairman; Mrs. F. Joplin, vice-chairman, and Mrs. Marion Dryden, secretary.

Friday, November 5.
Realty Board day, Clayton Oehler, chairman; Central and Eastern Oregon day.

Saturday, November 6.
Farmers' marketing day, John P. Carroll, chairman; Multnomah County day, Rufus C. Holman, chairman; Oregon day, Frank W. Fowler, chairman.



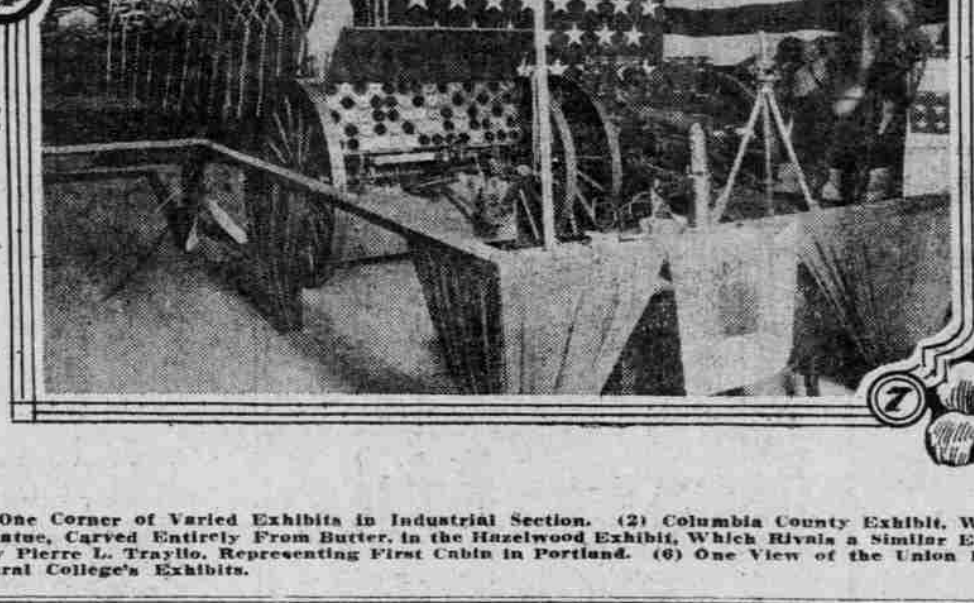
WITH a week of wonderful success completed, the Manufacturers' and Land Products Show is entering the second week with the expectation of setting still a new record in interest and attendance at the big exposition.

The first days of the first week were in a measure consumed in getting the exhibits all in place and the show running smoothly in every department. All of the preliminary work is now well done and the exhibits are all at their best for the opening of the second week.

The special features of the coming week will be on a bigger scale and of still broader appeal to the public than those of the preceding week, and prizes distributed at special programmes alone will be represented many thousands of dollars.

All of the first week the interest centered about the land products pavilion, and tomorrow afternoon the manufacturers' section will especially come into the limelight.

Tomorrow afternoon is manufacturers' day and all of the manufacturers and exhibitors in the show will participate in the programme and will contribute to the list of prizes to be given to the public.



(1) View of One Corner of Varied Exhibits in Industrial Section. (2) Columbia County Exhibit, Which Drew Much Admiration and Comment. (3) What Polk County Sent to the Show. (4) Butter Statue, Carved Entirely From Butter, in the Hazelwood Exhibit, Which Rivals a Similar Exhibit of the Panama-Pacific International Exposition at San Francisco. (5) House Built of Apples by Pierre L. Traylor, Representing First Cabin in Portland. (6) One View of the Union Pacific Company's Offering at the Show. (7) Battery A's Exhibit. (8) One of the Oregon Agricultural College's Exhibits.

Prizes for Day Worth \$1000.
Distribution of prizes will be the feature of the afternoon and all visitors to the show will receive coupons. Prizes to the value of \$1000 will be distributed to those who attend the big exposition.

A. J. Kingsley is chairman for Manufacturers' day and M. J. Walsh, of the exposition committee. Three sets of prizes will be distributed in addition to the special articles donated for Monday there will be the daily distribution of prizes from the various booths at the show.

Following is the complete lineup for Monday at the exposition:

Manufacturers' Day:
A. J. Kingsley, chairman; F. S. Mann, Pacific Stevedore Company; W. H. McMoner, W. H. McMoner & Co.; P. Feldman, Mount Hood Soap Company; M. J. Heller, Heller & Under Co.; F. L. Knight, Knight Packing Company.

The following prizes will be distributed:

Doenbecher Manufacturing Company, one up-to-date dresser; Hirsch-Weis Company, one canvas hamock; Model's Ready-to-wear Company, two boxes candy; Har-Picko Works, one case assorted pickles; Mount Hood Soap Company, one box Lullu soap; Coast Scrub Company, one gallon Tea Garden Drips.

Exhibitors' Night:
M. J. Walsh, chairman; J. L. Duffy, Independent Coal; J. C. Engle, Pierce-Tomlinson Company; Frank Pierce, Pierce-Tomlinson Company.

The following prizes will be distributed:

M. J. Walsh & Company, one beautiful reading lamp; Independent Coal & Ice Company, one-half ton of coal; J. C. Eng-

Southern Clans Coming.
Monday will bring delegations from Klamath Falls, Ashland, Medford and Grants Pass, under the programme of the Elks of Portland.

Tuesday is O.-W. R. & N. day, and features delegations from Salem, Eugene and Albany. The Albany Pioneers, a marching organization, with a band, will come from the Hub City. Mayors of Corvallis, Salem, Eugene and Albany have been invited to be guests of the Chamber of Commerce for the day. The delegations will march from the depot to the exposition, and Mayor Elsie will greet the visiting Mayors.

Wednesday brings Japanese day. Delegates to the first annual convention of the Western Walnut Association, in session in Portland November 2 and 3, will attend the exposition, and the exhibits of walnuts will be installed in the show at the conclusion of the convention.

Thursday features Loop day, McMinnville day, old-fashioned baby show and the presentation at the exposition of members and delegates of the Oregon Clayworkers Association. They will spend the evening of November 4 at the show.

Friday, November 5, brings the Realty Board to the exposition and delegations from Central and Eastern Oregon. Booster delegations from Forest Grove have been touring Western Washington County in the interest of the exposition, and a big delegation will come to the land show on Friday with their own band. Saturday will be Farmers' Marketing day, Multnomah County day and Oregon day. From Oregon will come almost all the people in the town with their band.

stalled the attractive corn booth at the exposition.

Floata Will Be Big Feature.
Following the officials will come the main body of the employees with the women in automobiles and the men, eight abreast, carrying the cornstalks to represent a moving cornfield.

Floata will be a big feature of the pageant, and the procession as a whole will be the most spectacular seen on the streets since the great fraternal and industrial parade of Ross Festival days.

The first float will represent the uncultivated area of Oregon, as typified by the sagebrush and the jackrabbit. Next will follow the float showing irrigation, the cultivated land, the growing crop and, last, the cornfield in maturity.

Section 2 will consist of farming implements suitably decorated, donated for the parade by implement dealers of Portland, including the International Harvester Company, John Deere Plow Company, Parlin & Orendorf, Freeman & Son, Mitchell, Lewis & Staver, Moline Plow Company, Western Plow Company, R. M. Wade & Co., Fay & Egan and Oskar Huber.

Employees to Inspect Exhibits.
Upon arrival at the exposition the employees will inspect the exhibits. One of the features at the show will be a descriptive lecture of the famous Pendleton Roundup, by A. C. Jackson, the company's advertising agent, and a talk on corn by Farmer Smith. Motion pictures of the Roundup will be displayed. The formation for the O.-W. R. & N. parade will be as follows:

Grand marshal, D. E. Clark; marshal first section, Forester; marshal second section, Koch; marshal third section, Brown, Greenwood, White.

Line of March.
Wells-Fargo building, Sixth and Oak, to Third street, to Morrison, to Fifth, Fifth to Washington, to Sixth, to Morrison, to Broadway, to Washington, to Tenth, to Armory.

First Section.
Police platoon, O.-W. R. & N. band, big sign, drill team; autos, officials, J. D. Farrell, R. E. Miller, C. L. Smith; shield, flag, robes; 200 employees, boys, eight abreast, with corn stalks.

Floata—1. Freeman tractor, sagebrush float.

2. Holt tractor, P. & O. plow, etc.

3. International tractor, irrigating plant, two manure spreaders, planter.

Second Section.

1. Bull tractor, float young corn.

2. Holt tractor, float corn in shocks (bushy brook).

3. International tractor, silo, silo filler.

4. Tractor, float, hoes and sheep.

5. Road roller, road machinery.

Third Section.
Autos with women.

ed the record will be duplicated again this year, since many mothers already have called up the exposition for information. The committee in charge has issued the following statement giving the names of those in charge of the event, place of making entries and the prizes to be awarded in the various classes:

Mrs. Maude Burley, chairman; Mrs. F. Joplin, vice-chairman; Mrs. Marion Dryden, secretary.

Committee from Oregon Chapter, Daughters of Confederacy: Mrs. F. Joplin, Mrs. K. S. McGuire, Mrs. P. H. Thompson and Mrs. E. M. Silva.

Committee from Peninsula Lavender Club: Mrs. Cornelia Haynes, Mrs. J. E. Reynolds, Mrs. Marion Dryden, councillor-at-large (Lavender).

Branch No. 1: Mrs. Maude Burley, Mrs. S. H. Ross, Mrs. E. A. Thrall, Mrs. J. E. Know, Mrs. C. K. Claggett, Mrs. Charles Olson.

Entries will be taken from 9 to 1 until Tuesday, 6 P. M. November 2, by Mrs. W. M. Coplan, Broadway 1400; Mrs. Marion Dryden, Broadway 440, women's parlor, Chamber of Commerce; Mrs. F. Joplin, East 141; Mrs. S. A. Thrall, East 288; Mrs. N. S. McGuire, East 4343.

Booth for entries has been installed at 1410 Main, Elks' new building, Mrs. F. Joplin and Mrs. R. N. McGuire, Friday, Mrs. V. M. Silva, Saturday.

Classes: Judged on beauty, brightness, activity; either sex, under 6 months, two prizes; best boy, 6 months to 1 year; best girl, 6 months to 1 year; best boy, 1 to 2 years; best girl, 1 to 2 years; best twins, two prizes; best chicks.

A souvenir will be given each baby entered. Special prizes will be given to the best group of grandmothers exhibiting not less than three grandchildren. Institutions exhibiting groups of babies in uniform; Manufacturers exhibiting specially dressed baby, expiating his particular line of goods. Age limit, 3 years. Blue ribbon.

HERMIONE TO BE SEEN BY NEW YORK AUDIENCE

Don Marquis Proposes Staging His Eccentric Character, Who Always Is in Forefront of Radicals Following Each "Highbrow" Fad.

Don Marquis, philosopher, poet and humorist, is thinking of staging "Hermione." She is a young woman, product of Mr. Marquis' brain, who belongs to a "little group of serious thinkers" which takes up with enthusiasm every new fad from eugenics to "the dear Swamie" who preach Oriental religions. She is an admirer of the most radical development of vers libre and she revels in eugenics, which she thinks "just sweet." Mr. Marquis conducts a department of quizzical comment in one of New York's papers, but he is better known in the literary world as the author of some delightful verse.

Japanese Day at Land Show to Be Wednesday.

Special Programme Being Arranged and Interpreters Will Explain Farm Exhibits.

JAPAN will be the first country to be honored with a special day at the Manufacturers' and Land Products Show. Wednesday has been set aside as Japanese day, and Y. Nakaya is working with the officials of the big exhibition to provide features that will attract his countrymen to the show in great numbers.

The Japanese are fine farmers, and Japanese interpreters will be about the various exhibits to explain the meaning of the many displays. Assisting Chairman Nakaya will be a committee consisting of T. Uchida, S. Sekiguchi, H. Kohara and G. Somekawa.

At the intersection of Tenth and Washington streets will hang large Japanese lanterns to call attention to the event, and all afternoon Wednesday and until the close of the night show six Japanese women of the city will serve tea and rice cakes.

The free theater at the exposition will be beautifully decorated with lanterns and flags and it will resemble cherry blossom time in fair Japan. The members of the Japanese committee, through their associations and publications, are giving widespread publicity to the event, and it is estimated more than 2000 Japanese will be attracted to the show.

SAYRE NARROWLY ESCAPES

Son-in-Law of President Wilson Has Exciting Experience.

MINNEAPOLIS, Minn., Oct. 25.—"We are delighted. Every member of President Wilson's family is tremendously pleased." Mrs. Galt is a most charming woman.

This was the statement of Francis B. Sayre, son-in-law of the President, in commenting on the engagement of his father-in-law to Mrs. Norman Galt. Sayre was on his way East to Minneapolis, Minn., from Labrador, where he has been cruising with Dr. W. T. Grenfell. He tells a graphic story how he narrowly escaped death there.

"We were coming into Battle Harbor," said Sayre, "which has one of the worst channels on the coast. I had just been relieved from my trick at the wheel.

"As I was walking down the deck I felt a tremendous shock, which knocked me down. We were on the rocks.

"We worked all night to get the boat off and steamed into the harbor early next day, all of us thankful to have escaped.

"The second time we were near death" was when a pinnacle of a great iceberg broke and crashed down very near to our vessel."

The Chinese language is very difficult to learn, although there is no doubt, it is necessary to master about 20,000 syllable characters.

HUGE CORN PAGEANT TO BE GIVEN ON TUESDAY

O.-W. R. & N. Employees Will Demonstrate Lead Taken in Successful Development of Industry in Northwest—Half-Holiday Declared.

A SOLID acre of Northwest corn on the stalk moving over the streets of Portland! This is the central feature of the pageant to be staged Tuesday by the employees of the O.-W. R. & N. in connection with their participation in the Manufacturers' and Land Products Show, now in progress at the Armory.

More than 500 employees of the company will carry the 12 and 14-foot stalks. The company has taken the lead in the successful development of corn in the Northwest, and this feature of Oregon's agricultural greatness will be emphasized in the Tuesday afternoon procession.

J. D. Farrell, president of the company, has declared a half-holiday, and the members of the O.-W. R. & N. Employees' Club will be in charge of the great demonstration. George F. Koch is chairman of the committee, and has for his assistants A. G. Brown, Harold West and A. C. Forrester.

Parade Will Start at 1:30.

The Tuesday pageant is to impress Portland people and visitors in the city with the interest the O.-W. R. & N. is taking in the agricultural and indus-

trial development of Oregon and the entire Northwest.

Promptly at 1:30 o'clock the parade will leave the Wells-Fargo building, home of the company. It will be more than a mile in length. Before arrival at the exposition the parade will move from Sixth to Oak, Oak to Third, Third to Morrison, Morrison to Fifth, Fifth to Washington, Washington to Sixth, Sixth to Morrison, Morrison to Broadway, Broadway to Washington, Washington to Tenth and to the exposition building.

The parade will be headed by a platoon of Portland police, followed by the O.-W. R. & N. band, led by Steve Westover, of the company shops at Albina. Next will follow the Employees' Club drill team of 49 men and officials of the company in automobiles headed by President Farrell and R. E. Miller, traffic manager of the company, who retired November 1. The pageant will be something of a testimonial to Mr. Miller, who has taken such a prominent part in the agricultural development in this part of the country and directed the company's corn campaign. In this car will also be Farmer Smith, who has made such strides for the company along agricultural lines and in-

Interest High for Baby Show at Exposition Thursday.

Conditions for Old-Fashioned Contest Are Announced by Committee in Charge.

INTEREST now centers in the old-fashioned baby show at the Manufacturers' and Land Products Exposition next Thursday afternoon.

The baby show last year brought out more than 500 babies, and it is expect-



Don Marquis.

Elks Will Rule at Land Show Tomorrow Night.

Lodge Dooms Pessimism to Die and Band Will Aid in Entertainment.

ELKS of Portland propose to make their presence known at the Manufacturers' and Land Products Exposition tomorrow night.

"It may be blue Monday," said K. K. Kubli, "but I have enlisted E. A. Marshall and Monroe Goldstein in the cause," and we have promised to stir things up.

"Death is the verdict. Old Man Pessimism doomed to die," reads the invitation card being sent out inviting all Elks to be present at the show tomorrow night.

"All members of Portland Lodge, No. 142, B. F. O. E., irrespective of race, creed, political affiliation or previous condition of nerves, are hereby notified to report at the Elks' Temple in this city at 7:45 P. M., Monday, November 1, for the purpose of proceeding in a body to the Manufacturers' and Land Products Show," continues the invitation.

The Elks' Band of 49 pieces under the leadership of Signor Tiganio will lead the parade to the Armory and the musicians in their beautiful uniforms will be the center of attraction during the evening.

One of the features in the theater will be the films of the 1912 grand lodge, which will be run through at the request of many Elks in Portland who have not as yet seen them. Elks from nearby cities and towns are invited to join in the parade and Elks from any part of the world in Portland next Monday are expected at the exposition.

The Elks have 5000 miles of railways and about 50,000 miles of telegraph wire.

Elks Will Rule at Land Show Tomorrow Night.

Lodge Dooms Pessimism to Die and Band Will Aid in Entertainment.

ELKS of Portland propose to make their presence known at the Manufacturers' and Land Products Exposition tomorrow night.

"It may be blue Monday," said K. K. Kubli, "but I have enlisted E. A. Marshall and Monroe Goldstein in the cause," and we have promised to stir things up.

"Death is the verdict. Old Man Pessimism doomed to die," reads the invitation card being sent out inviting all Elks to be present at the show tomorrow night.

"All members of Portland Lodge, No. 142, B. F. O. E., irrespective of race, creed, political affiliation or previous condition of nerves, are hereby notified to report at the Elks' Temple in this city at 7:45 P. M., Monday, November 1, for the purpose of proceeding in a body to the Manufacturers' and Land Products Show," continues the invitation.

The Elks' Band of 49 pieces under the leadership of Signor Tiganio will lead the parade to the Armory and the musicians in their beautiful uniforms will be the center of attraction during the evening.

One of the features in the theater will be the films of the 1912 grand lodge, which will be run through at the request of many Elks in Portland who have not as yet seen them. Elks from nearby cities and towns are invited to join in the parade and Elks from any part of the world in Portland next Monday are expected at the exposition.

The Elks have 5000 miles of railways and about 50,000 miles of telegraph wire.