

OWN HOME SOUGHT FOR RURAL TEACHER

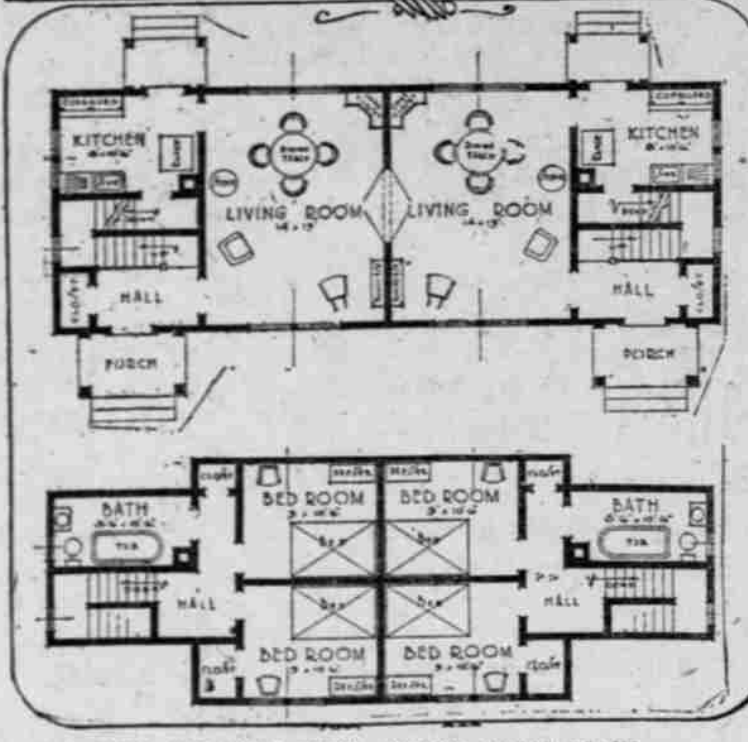
Plans Are Outlined to Encourage Construction in Washington.

"BOARDING OUT" OPPOSED

Possibility for Marriage and Pleasant Surroundings Shown—Types Are Adopted for Large and Small Districts.

OLYMPIA, Wash., Aug. 21.—(Special.)—In an endeavor to encourage the construction of teachers' cottages in rural school districts, State Superintendent of Public Instruction Josephine Corlies Preston, has prepared and officially approved two sets of plans of typical cottages being at the service of school districts desiring to provide quarters for teachers.

TEACHER'S MODEL COTTAGE PLANNED FOR USE IN WASHINGTON STATE.



TOP—EXTERIOR VIEW. BELOW—FLOOR PLANS.

DEPOSITS RULED OUT

Washington Telephone Companies Must Return \$100,000.

STATE ORDER IS ISSUED

Bills for Service Can Be Collected in Advance, but No Money To Be Demanded.

CLYMPIA, Wash., Aug. 21.—(Special.)—A far-reaching order of the Public Service Commission today prohibits telephone companies in collecting a deposit to assure payment of bills by subscribers.

CLYMPIA, Wash., Aug. 21.—(Special.)—The grand jury has been summoned for the September term of the county court at Olympia.

CLYMPIA, Wash., Aug. 21.—(Special.)—The grand jury has been summoned for the September term of the county court at Olympia.

CLYMPIA, Wash., Aug. 21.—(Special.)—The grand jury has been summoned for the September term of the county court at Olympia.

CLYMPIA, Wash., Aug. 21.—(Special.)—The grand jury has been summoned for the September term of the county court at Olympia.

CLYMPIA, Wash., Aug. 21.—(Special.)—The grand jury has been summoned for the September term of the county court at Olympia.

CLYMPIA, Wash., Aug. 21.—(Special.)—The grand jury has been summoned for the September term of the county court at Olympia.

CLYMPIA, Wash., Aug. 21.—(Special.)—The grand jury has been summoned for the September term of the county court at Olympia.

CLYMPIA, Wash., Aug. 21.—(Special.)—The grand jury has been summoned for the September term of the county court at Olympia.

CLYMPIA, Wash., Aug. 21.—(Special.)—The grand jury has been summoned for the September term of the county court at Olympia.

CLYMPIA, Wash., Aug. 21.—(Special.)—The grand jury has been summoned for the September term of the county court at Olympia.

CLYMPIA, Wash., Aug. 21.—(Special.)—The grand jury has been summoned for the September term of the county court at Olympia.

CLYMPIA, Wash., Aug. 21.—(Special.)—The grand jury has been summoned for the September term of the county court at Olympia.

CLYMPIA, Wash., Aug. 21.—(Special.)—The grand jury has been summoned for the September term of the county court at Olympia.

CLYMPIA, Wash., Aug. 21.—(Special.)—The grand jury has been summoned for the September term of the county court at Olympia.

CLYMPIA, Wash., Aug. 21.—(Special.)—The grand jury has been summoned for the September term of the county court at Olympia.

3 BROTHERS SLAIN

Joe Mastig, of Coos Bay, Back From Trip to Europe.

ORIENT ALSO IS VISITED

Journey Started to See Aged Parent in Germany, but Death Intervenes and War Prevents Landing on Native Soil.

MARSHFIELD, Or., Aug. 21.—(Special.)—When Joe Mastig, of this city, left Coos Bay in the Fall of 1914, his friends believed he was going home to fight for Germany, although he had been naturalized and denied any intent of going into the Kaiser's army.

MARSHFIELD, Or., Aug. 21.—(Special.)—When Joe Mastig, of this city, left Coos Bay in the Fall of 1914, his friends believed he was going home to fight for Germany, although he had been naturalized and denied any intent of going into the Kaiser's army.

MARSHFIELD, Or., Aug. 21.—(Special.)—When Joe Mastig, of this city, left Coos Bay in the Fall of 1914, his friends believed he was going home to fight for Germany, although he had been naturalized and denied any intent of going into the Kaiser's army.

MARSHFIELD, Or., Aug. 21.—(Special.)—When Joe Mastig, of this city, left Coos Bay in the Fall of 1914, his friends believed he was going home to fight for Germany, although he had been naturalized and denied any intent of going into the Kaiser's army.

MARSHFIELD, Or., Aug. 21.—(Special.)—When Joe Mastig, of this city, left Coos Bay in the Fall of 1914, his friends believed he was going home to fight for Germany, although he had been naturalized and denied any intent of going into the Kaiser's army.

MARSHFIELD, Or., Aug. 21.—(Special.)—When Joe Mastig, of this city, left Coos Bay in the Fall of 1914, his friends believed he was going home to fight for Germany, although he had been naturalized and denied any intent of going into the Kaiser's army.

MARSHFIELD, Or., Aug. 21.—(Special.)—When Joe Mastig, of this city, left Coos Bay in the Fall of 1914, his friends believed he was going home to fight for Germany, although he had been naturalized and denied any intent of going into the Kaiser's army.

MARSHFIELD, Or., Aug. 21.—(Special.)—When Joe Mastig, of this city, left Coos Bay in the Fall of 1914, his friends believed he was going home to fight for Germany, although he had been naturalized and denied any intent of going into the Kaiser's army.

MARSHFIELD, Or., Aug. 21.—(Special.)—When Joe Mastig, of this city, left Coos Bay in the Fall of 1914, his friends believed he was going home to fight for Germany, although he had been naturalized and denied any intent of going into the Kaiser's army.

MARSHFIELD, Or., Aug. 21.—(Special.)—When Joe Mastig, of this city, left Coos Bay in the Fall of 1914, his friends believed he was going home to fight for Germany, although he had been naturalized and denied any intent of going into the Kaiser's army.

MARSHFIELD, Or., Aug. 21.—(Special.)—When Joe Mastig, of this city, left Coos Bay in the Fall of 1914, his friends believed he was going home to fight for Germany, although he had been naturalized and denied any intent of going into the Kaiser's army.

MARSHFIELD, Or., Aug. 21.—(Special.)—When Joe Mastig, of this city, left Coos Bay in the Fall of 1914, his friends believed he was going home to fight for Germany, although he had been naturalized and denied any intent of going into the Kaiser's army.

MARSHFIELD, Or., Aug. 21.—(Special.)—When Joe Mastig, of this city, left Coos Bay in the Fall of 1914, his friends believed he was going home to fight for Germany, although he had been naturalized and denied any intent of going into the Kaiser's army.

MARSHFIELD, Or., Aug. 21.—(Special.)—When Joe Mastig, of this city, left Coos Bay in the Fall of 1914, his friends believed he was going home to fight for Germany, although he had been naturalized and denied any intent of going into the Kaiser's army.

MARSHFIELD, Or., Aug. 21.—(Special.)—When Joe Mastig, of this city, left Coos Bay in the Fall of 1914, his friends believed he was going home to fight for Germany, although he had been naturalized and denied any intent of going into the Kaiser's army.

MARSHFIELD, Or., Aug. 21.—(Special.)—When Joe Mastig, of this city, left Coos Bay in the Fall of 1914, his friends believed he was going home to fight for Germany, although he had been naturalized and denied any intent of going into the Kaiser's army.

MARSHFIELD, Or., Aug. 21.—(Special.)—When Joe Mastig, of this city, left Coos Bay in the Fall of 1914, his friends believed he was going home to fight for Germany, although he had been naturalized and denied any intent of going into the Kaiser's army.

MARSHFIELD, Or., Aug. 21.—(Special.)—When Joe Mastig, of this city, left Coos Bay in the Fall of 1914, his friends believed he was going home to fight for Germany, although he had been naturalized and denied any intent of going into the Kaiser's army.

MARSHFIELD, Or., Aug. 21.—(Special.)—When Joe Mastig, of this city, left Coos Bay in the Fall of 1914, his friends believed he was going home to fight for Germany, although he had been naturalized and denied any intent of going into the Kaiser's army.

MARSHFIELD, Or., Aug. 21.—(Special.)—When Joe Mastig, of this city, left Coos Bay in the Fall of 1914, his friends believed he was going home to fight for Germany, although he had been naturalized and denied any intent of going into the Kaiser's army.

MARSHFIELD, Or., Aug. 21.—(Special.)—When Joe Mastig, of this city, left Coos Bay in the Fall of 1914, his friends believed he was going home to fight for Germany, although he had been naturalized and denied any intent of going into the Kaiser's army.

MARSHFIELD, Or., Aug. 21.—(Special.)—When Joe Mastig, of this city, left Coos Bay in the Fall of 1914, his friends believed he was going home to fight for Germany, although he had been naturalized and denied any intent of going into the Kaiser's army.

MARSHFIELD, Or., Aug. 21.—(Special.)—When Joe Mastig, of this city, left Coos Bay in the Fall of 1914, his friends believed he was going home to fight for Germany, although he had been naturalized and denied any intent of going into the Kaiser's army.

MARSHFIELD, Or., Aug. 21.—(Special.)—When Joe Mastig, of this city, left Coos Bay in the Fall of 1914, his friends believed he was going home to fight for Germany, although he had been naturalized and denied any intent of going into the Kaiser's army.

MARSHFIELD, Or., Aug. 21.—(Special.)—When Joe Mastig, of this city, left Coos Bay in the Fall of 1914, his friends believed he was going home to fight for Germany, although he had been naturalized and denied any intent of going into the Kaiser's army.

MARSHFIELD, Or., Aug. 21.—(Special.)—When Joe Mastig, of this city, left Coos Bay in the Fall of 1914, his friends believed he was going home to fight for Germany, although he had been naturalized and denied any intent of going into the Kaiser's army.

1909 he came to Eugene and entered the university as a student, graduating with the class of 1904. His father for a year in Hill Military Academy, at Portland, after which he went to Seattle and spent two years, completing a law degree.

Mr. Goodrich is a member of the board of directors and assistant cashier of the First National Bank, having been connected with the institution since 1907. He is vice-president of the Eugene Commercial Club, a member of the board of directors of the Eugene public library, and a trustee of the Eugene branch of the Y. M. C. A.

KENNEWICK PRIZES FIXED

List of Offerings Completed for Grape Carnival in Fall.

KENNEWICK, Wash., Aug. 21.—(Special.)—The premium list for the Kennewick River Valley Grape Carnival, to be held here September 12, 14 and 15, has been completed. The prizes will be awarded for exhibits in agriculture, horticulture, livestock, dry farming, domestic art and by boys' and girls' clubs. Nearly \$1000 in cash and merchandise will be given.

The notable feature this year is that all railroads and large mercantile concerns have refused to award any long-line prizes in agriculture, horticulture, livestock, dry farming, domestic art and by boys' and girls' clubs. Nearly \$1000 in cash and merchandise will be given.

Best three displays of farm products from any district outside of Kennewick—First, \$25; second, \$15; third, \$10. Best three individual displays of grapes—First, \$25; second, \$15; third, \$10. Awards for other grape displays, \$100. Livestock awards, \$250. Vegetable awards, \$40. Cereals raised in the valley, \$30. Best general display dry land products—First, \$10; second, \$5.

Best three individual displays of grapes—First, \$25; second, \$15; third, \$10. Awards for other grape displays, \$100. Livestock awards, \$250. Vegetable awards, \$40. Cereals raised in the valley, \$30. Best general display dry land products—First, \$10; second, \$5.

Best three individual displays of grapes—First, \$25; second, \$15; third, \$10. Awards for other grape displays, \$100. Livestock awards, \$250. Vegetable awards, \$40. Cereals raised in the valley, \$30. Best general display dry land products—First, \$10; second, \$5.

Best three individual displays of grapes—First, \$25; second, \$15; third, \$10. Awards for other grape displays, \$100. Livestock awards, \$250. Vegetable awards, \$40. Cereals raised in the valley, \$30. Best general display dry land products—First, \$10; second, \$5.

Best three individual displays of grapes—First, \$25; second, \$15; third, \$10. Awards for other grape displays, \$100. Livestock awards, \$250. Vegetable awards, \$40. Cereals raised in the valley, \$30. Best general display dry land products—First, \$10; second, \$5.

Best three individual displays of grapes—First, \$25; second, \$15; third, \$10. Awards for other grape displays, \$100. Livestock awards, \$250. Vegetable awards, \$40. Cereals raised in the valley, \$30. Best general display dry land products—First, \$10; second, \$5.

Best three individual displays of grapes—First, \$25; second, \$15; third, \$10. Awards for other grape displays, \$100. Livestock awards, \$250. Vegetable awards, \$40. Cereals raised in the valley, \$30. Best general display dry land products—First, \$10; second, \$5.

Best three individual displays of grapes—First, \$25; second, \$15; third, \$10. Awards for other grape displays, \$100. Livestock awards, \$250. Vegetable awards, \$40. Cereals raised in the valley, \$30. Best general display dry land products—First, \$10; second, \$5.

Best three individual displays of grapes—First, \$25; second, \$15; third, \$10. Awards for other grape displays, \$100. Livestock awards, \$250. Vegetable awards, \$40. Cereals raised in the valley, \$30. Best general display dry land products—First, \$10; second, \$5.

Best three individual displays of grapes—First, \$25; second, \$15; third, \$10. Awards for other grape displays, \$100. Livestock awards, \$250. Vegetable awards, \$40. Cereals raised in the valley, \$30. Best general display dry land products—First, \$10; second, \$5.

Best three individual displays of grapes—First, \$25; second, \$15; third, \$10. Awards for other grape displays, \$100. Livestock awards, \$250. Vegetable awards, \$40. Cereals raised in the valley, \$30. Best general display dry land products—First, \$10; second, \$5.

Best three individual displays of grapes—First, \$25; second, \$15; third, \$10. Awards for other grape displays, \$100. Livestock awards, \$250. Vegetable awards, \$40. Cereals raised in the valley, \$30. Best general display dry land products—First, \$10; second, \$5.

Best three individual displays of grapes—First, \$25; second, \$15; third, \$10. Awards for other grape displays, \$100. Livestock awards, \$250. Vegetable awards, \$40. Cereals raised in the valley, \$30. Best general display dry land products—First, \$10; second, \$5.

Best three individual displays of grapes—First, \$25; second, \$15; third, \$10. Awards for other grape displays, \$100. Livestock awards, \$250. Vegetable awards, \$40. Cereals raised in the valley, \$30. Best general display dry land products—First, \$10; second, \$5.

Best three individual displays of grapes—First, \$25; second, \$15; third, \$10. Awards for other grape displays, \$100. Livestock awards, \$250. Vegetable awards, \$40. Cereals raised in the valley, \$30. Best general display dry land products—First, \$10; second, \$5.

Best three individual displays of grapes—First, \$25; second, \$15; third, \$10. Awards for other grape displays, \$100. Livestock awards, \$250. Vegetable awards, \$40. Cereals raised in the valley, \$30. Best general display dry land products—First, \$10; second, \$5.

Best three individual displays of grapes—First, \$25; second, \$15; third, \$10. Awards for other grape displays, \$100. Livestock awards, \$250. Vegetable awards, \$40. Cereals raised in the valley, \$30. Best general display dry land products—First, \$10; second, \$5.

Best three individual displays of grapes—First, \$25; second, \$15; third, \$10. Awards for other grape displays, \$100. Livestock awards, \$250. Vegetable awards, \$40. Cereals raised in the valley, \$30. Best general display dry land products—First, \$10; second, \$5.

Best three individual displays of grapes—First, \$25; second, \$15; third, \$10. Awards for other grape displays, \$100. Livestock awards, \$250. Vegetable awards, \$40. Cereals raised in the valley, \$30. Best general display dry land products—First, \$10; second, \$5.

Best three individual displays of grapes—First, \$25; second, \$15; third, \$10. Awards for other grape displays, \$100. Livestock awards, \$250. Vegetable awards, \$40. Cereals raised in the valley, \$30. Best general display dry land products—First, \$10; second, \$5.

Best three individual displays of grapes—First, \$25; second, \$15; third, \$10. Awards for other grape displays, \$100. Livestock awards, \$250. Vegetable awards, \$40. Cereals raised in the valley, \$30. Best general display dry land products—First, \$10; second, \$5.

Best three individual displays of grapes—First, \$25; second, \$15; third, \$10. Awards for other grape displays, \$100. Livestock awards, \$250. Vegetable awards, \$40. Cereals raised in the valley, \$30. Best general display dry land products—First, \$10; second, \$5.

Best three individual displays of grapes—First, \$25; second, \$15; third, \$10. Awards for other grape displays, \$100. Livestock awards, \$250. Vegetable awards, \$40. Cereals raised in the valley, \$30. Best general display dry land products—First, \$10; second, \$5.

NIGHT SCHOOL OPENS Wednesday, September 1, 1915

Why not spend your evenings so that when the opportunity comes you are ready to grasp it?

Call on our Mr. Walker and plan your Winter's work, or check the subject you wish to study and mail. We will send full information.

Behrke-Walker BUSINESS COLLEGE 4th and Yamhill Sts. Portland, Oregon.

Columbia University PORTLAND, OREGON

A Catholic Boarding and Day School for Young Men and Boys, Delightfully Located on the Banks of the Willamette.

Offers Courses in the College, the Preparatory or High School, the Commercial School, the Grammar Grade Schools.

For Catalogue Apply to the Registrar

COUNTY LAND SALE IS SET

Washington Tracts to Be Disposed Of on October 5.

OLYMPIA, Wash., Aug. 21.—(Special.)—Simultaneous sales of state lands in 29 counties of Washington have been ordered by State Land Commissioner Clark V. Noyes for October 5. The sales will be conducted by the County Auditors and \$265,276.48 worth of land and timber will be disposed of to the highest bidder.

The character of the land offered is as follows: Agricultural or grazing lands, \$158,913.67; tidelands, \$349.99; shore lands of lakes, Washington and Union, Seattle, \$12,529.79; large areas, 1328; timber, \$33,770.36; total, \$265,276.48.

SEASIDE GETS LUNG MOTOR

By Public Subscription \$150 Procured to Aid in Life Saving.

SEASIDE, Or., Aug. 21.—(Special.)—The new lung motor, purchased by public subscription, arrived yesterday and is on exhibit here. The two drowning deaths that have taken place this season on the Clatsop beaches cause a great deal of concern among the business men.

St. Paul's School Boarding School for Girls

WALLA WALLA, WASH. Founded 1872. Delightful school home, offering every educational advantage. Climate, beautiful and dry. Terms, moderate. Academic, post-graduate, intermediate departments. Unusual opportunities in vocal and instrumental music and art.

LINK'S BUSINESS COLLEGE

Stenographers, Bookkeepers and Cashiers Trained and Supplied. We Save You Time and Money. We Train You Thoroughly. FALL TERM OPENS WEDNESDAY, SEPT. 1, 1915

MISS CATLIN'S SCHOOL

For Boarding and Day Pupils. Opens September 1st. Prepares for Eastern Schools and Colleges. Primary and intermediate departments. Motivated instruction for the children. Special primary for boys. Course in Art, Music and Dramatic and Physical Education. Special care in health of students. Christian education. Under the supervision of the Board of Education. Full term begins September 1st. For catalogue address: Miss Catlin, Mills College, P. O., Colton, Ore.

Mills College

Suburbs of Oakland, California. The only women's college on the Pacific Coast. Entrance and graduation requirements equivalent to University of California. Complete Department. Full training in Bookkeeping, and in Commercial, Domestic Science and Education. Music, Painting, Chinese, Japanese, and in Gymnastics and Physical Education. Special care in health of students. Christian education. Under the supervision of the Board of Education. Full term begins September 1st. For catalogue address: Mills College, P. O., Colton, Ore.

Manzanita Hall for Boys

An accredited school, adjacent to Stanford University, preparing for entrance to the universities and technical schools. Next term begins August 21, 1915. For catalogue and specific information, address: W. A. SHELDON, Head Master, PALO ALTO, CALIFORNIA

St. Mary's Academy and College

Conducted for girls by the SISTERS OF THE HOLY NAMES OF JESUS AND MARY. COMPLETE GRADE, ACADEMIC AND COLLEGE COURSES—Commercial, Domestic Science and Education, Music, Painting, Voice, Violin, Violoncello, Harp, Harmony, Art, Water Color, Oil Painting, Chinese, Japanese, and in Gymnastics and Physical Education. Special care in health of students. Christian education. Under the supervision of the Board of Education. Full term begins September 1st. For catalogue address: St. Mary's Academy, Portland, Ore.

PACIFIC UNIVERSITY

FOREST GROVE, OREGON. Stands for Character Building. "Standard" work—Splendid Campus and Buildings. Send for free illustrated Bulletin and catalogue. C. J. BUSHNELL, Pres., Forest Grove, Or.

Castilleja School for Girls

Accredited to Colleges East and West. Grammar and Primary Departments. Send for illustrated catalogue. Principal, Mary L. Lacey, A. S. PALO ALTO, CALIF.

SCHOOL OF THE PORTLAND ART ASSOCIATION

Day, Evening and Saturday Classes. Drawing, Painting, Composition, Designs and Crafts. Seventh Year Begins October 4, 1915. Museum of Art, Fifth and Taylor Sts.

Belmont School (For Boys)

21 miles south of San Francisco. We think that we give to our boys what thoughtful parents wish. Our graduates enter, on recommendation, institutions that admit on certificate and on examination (see page 24 of our catalogue) to Harvard, the Massachusetts Institute of Technology, and Yale, whose admission requirements are the highest. We offer a beautiful illustrated catalogue, which gives not only a very good idea of the spirit and the attractive school home, but also the equipment and the facilities of the school. Write, however, and quite take the place of a visit to the school. W. T. REED, Head Master, Box 8, Belmont, Cal.

HOLY NAMES NORMAL SCHOOL

MARYLHURST, OSWEGO, OREGON. Accredited by the State of Oregon. Standard normal course of two years above four years of High School course. Trained instructors. Practical work in every department. Full session will open September 7, 1915. For Year Book Address Secretary, or Procure Same at Oregonian Office.

RAY GOODRICH NAMED GOVERNOR APPOINTS HIM MEMBER OF UNIVERSITY REGENTS

Member of the Alumni Will Fill Unexpired Term of the Late S. H. Friendly, of Eugene.

EUGENE, Or., Aug. 21.—(Special.)—Ray Goodrich, assistant cashier of the First National Bank of Eugene, was appointed member of the University of Oregon board of regents by Governor Withycombe today to fill the unexpired term of S. H. Friendly, deceased, and to serve until April, 1917.

The appointment of Ray Goodrich came as a surprise to him. A newspaper's dispatch was his first knowledge. When shown a copy of the dispatch received by the Evening Guard, he said: "I certainly appreciate the honor of being appointed to replace a man like Mr. Friendly. I will try to walk in his shoes."

Mr. Goodrich is a native of Oregon. He was born in Yamhill County, where he attended the common schools. For two years he attended the Oregon Agricultural College at Corvallis. In

1909 he came to Eugene and entered the university as a student, graduating with the class of 1904. His father for a year in Hill Military Academy, at Portland, after which he went to Seattle and spent two years, completing a law degree.

Mr. Goodrich is a member of the board of directors and assistant cashier of the First National Bank, having been connected with the institution since 1907. He is vice-president of the Eugene Commercial Club, a member of the board of directors of the Eugene public library, and a trustee of the Eugene branch of the Y. M. C. A.

Mr. Goodrich is a member of the board of directors and assistant cashier of the First National Bank, having been connected with the institution since 1907. He is vice-president of the Eugene Commercial Club, a member of the board of directors of the Eugene public library, and a trustee of the Eugene branch of the Y. M. C. A.

Mr. Goodrich is a member of the board of directors and assistant cashier of the First National Bank, having been connected with the institution since 1907. He is vice-president of the Eugene Commercial Club, a member of the board of directors of the Eugene public library, and a trustee of the Eugene branch of the Y. M. C. A.

Mr. Goodrich is a member of the board of directors and assistant cashier of the First National Bank, having been connected with the institution since 1907. He is vice-president of the Eugene Commercial Club, a member of the board of directors of the Eugene public library, and a trustee of the Eugene branch of the Y. M. C. A.

Mr. Goodrich is a member of the board of directors and assistant cashier of the First National Bank, having been connected with the institution since 1907. He is vice-president of the Eugene Commercial Club, a member of the board of directors of the Eugene public library, and a trustee of the Eugene branch of the Y. M. C. A.

Mr. Goodrich is a member of the board of directors and assistant cashier of the First National Bank, having been connected with the institution since 1907. He is vice-president of the Eugene Commercial Club, a member of the board of directors of the Eugene public library, and a trustee of the Eugene branch of the Y. M. C. A.

Mr. Goodrich is a member of the board of directors and assistant cashier of the First National Bank, having been connected with the institution since 1907. He is vice-president of the Eugene Commercial Club, a member of the board of directors of the Eugene public library, and a trustee of the Eugene branch of the Y. M. C. A.

Mr. Goodrich is a member of the board of directors and assistant cashier of the First National Bank, having been connected with the institution since 1907. He is vice-president of the Eugene Commercial Club, a member of the board of directors of the Eugene public library, and a trustee of the Eugene branch of the Y. M. C. A.

Mr. Goodrich is a member of the board of directors and assistant cashier of the First National Bank, having been connected with the institution since 1907. He is vice-president of the Eugene Commercial Club, a member of the board of directors of the Eugene public library, and a trustee of the Eugene branch of the Y. M. C. A.

Mr. Goodrich is a member of the board of directors and assistant cashier of the First National Bank, having been connected with the institution since 1907. He is vice-president of the Eugene Commercial Club, a member of the board of directors of the Eugene public library, and a trustee of the Eugene branch of the Y. M. C. A.

Mr. Goodrich is a member of the board of directors and assistant cashier of the First National Bank, having been connected with the institution since 1907. He is vice-president of the Eugene Commercial Club, a member of the board of directors of the Eugene public library, and a trustee of the Eugene branch of the Y. M. C. A.

Mr. Goodrich is a member of the board of directors and assistant cashier of the First National Bank, having been connected with the institution since 1907. He is vice-president of the Eugene Commercial Club, a member of the board of directors of the Eugene public library, and a trustee of the Eugene branch of the Y. M. C. A.

Mr. Goodrich is a member of the board of directors and assistant cashier of the First National Bank, having been connected with the institution since 1907. He is vice-president of the Eugene Commercial Club, a member of the board of directors of the Eugene public library, and a trustee of the Eugene branch of the Y. M. C. A.