

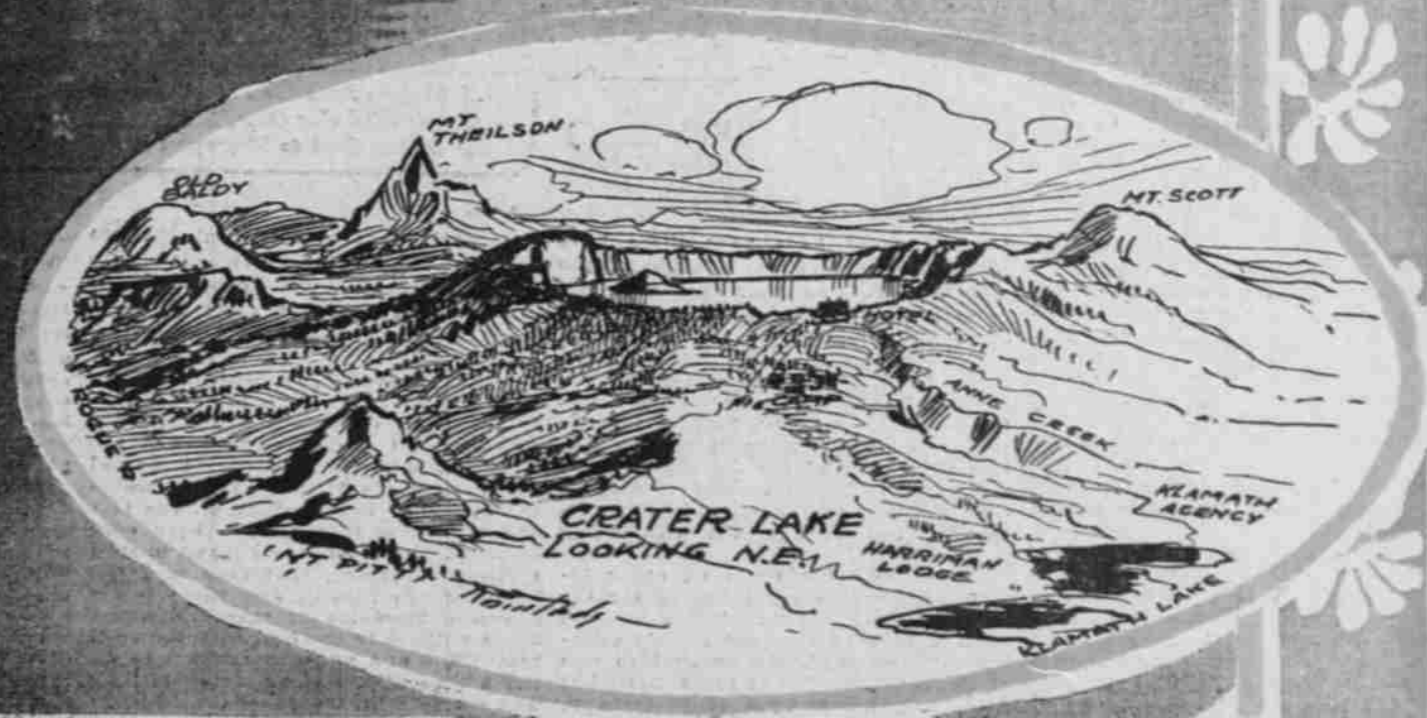
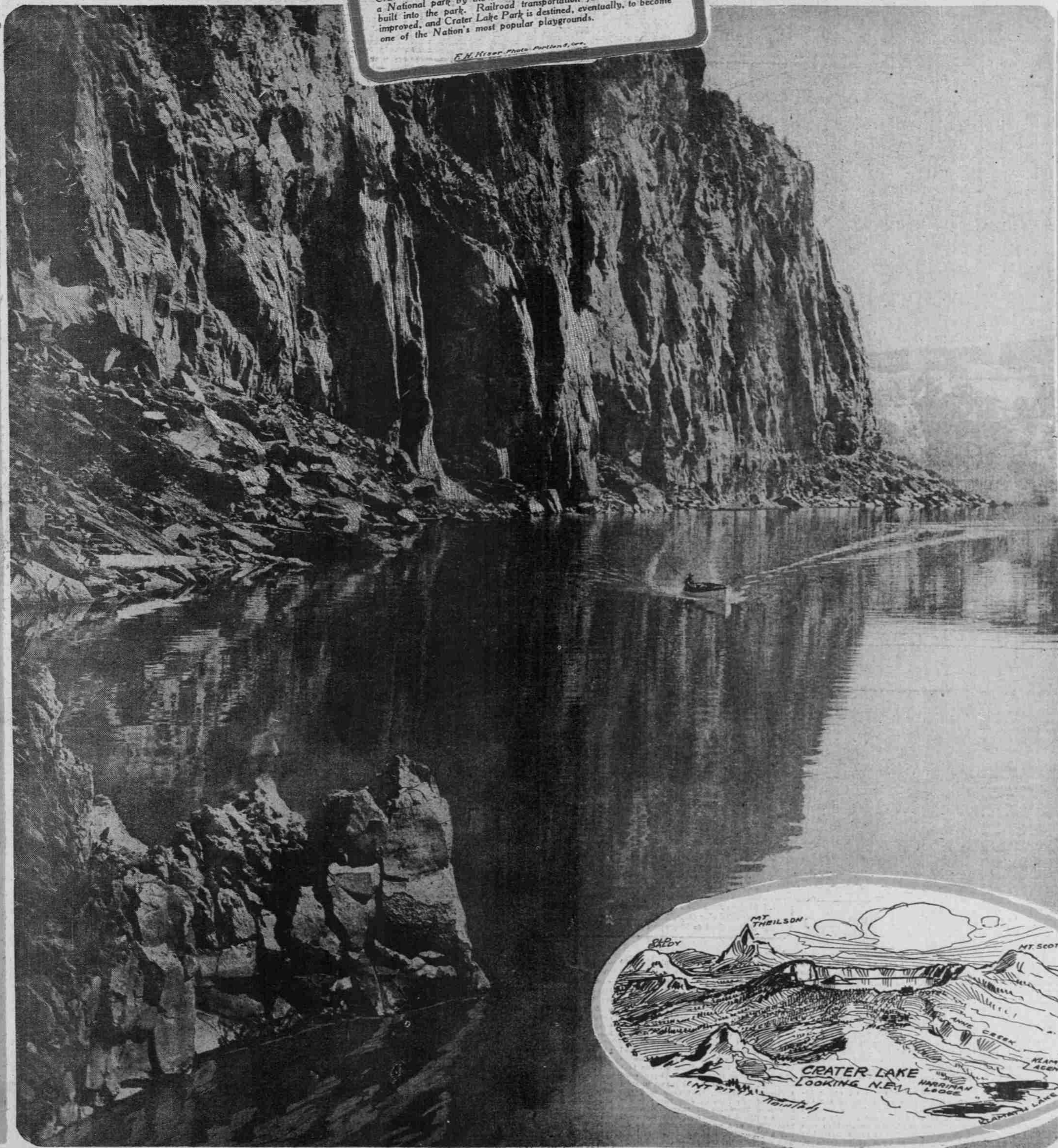


## East Palisades

**C**RATER LAKE rests in an abyss in the depths of an extinct volcano. Its shores are formed by the rocky sides of what was once a fiery crater. They rise to huge perpendicular heights a thousand feet above the surface of the water. Their shadows on the ultra-blue pool form grotesque and fanciful figures. These walls are so high and so abrupt that it is impossible to reach the edge of the water except through occasional narrow trails that wind around over the rocky sides for long distances. Crater Lake and the territory surrounding it have been set aside as a National park by the Federal Government. Roads are being built into the park. Railroad transportation facilities are being improved, and Crater Lake Park is destined, eventually, to become one of the Nation's most popular playgrounds.

*E. M. Hise, Photo Portland, Ore.*

## Crater Lake



A. BURR