

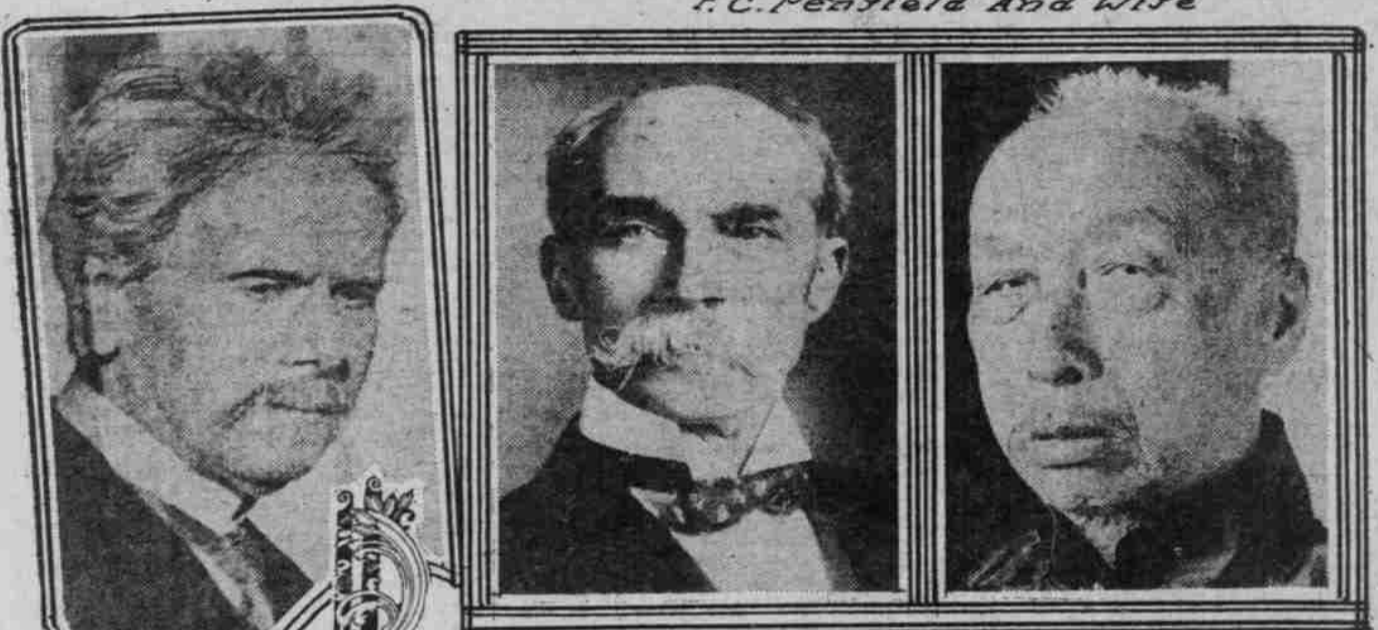
MEN WELL ADVANCED IN YEARS STILL ACTIVE IN WORLD AFFAIRS

General Benjamin F. Tracy Participates in Memorial Day Exercises Despite 85 Years and Accident on Way in Which He Is Wounded—Lord Lansdowne, at 70, Is Member of Britain's New Coalition Ministry.



B. F. Tracy

F. C. Penfield and Wife



Lord Lansdowne Chen Huan Chang.

President Braga, Portugal

though 85 years old, is still robust and he insisted on going to the exercises in spite of his wound.

NEW YORK, June 12.—As a result of the recent revolutionary rioting in Portugal, President Braga has resigned and former President Theodor Braga has been re-elected to the office.

General Benjamin F. Tracey, formerly Secretary of the Navy, was injured while going to the Memorial day exercises in Brooklyn in an automobile.

Sunday Church Services

- CHURCH NOTICES DUE THURSDAY
Church notices for the Sunday Oregonian should be in this office by Thursday at 5 P. M. It is not possible to assure publication of any notices after that hour.
ADVANCED THOUGHT.
Temple of Universal Fellowship—Services in W. O. W. Hall, Eleventh street between Washington and Alder, at 8 P. M. Topic: "The Effect of Occult Law on the Present Condition of Affairs," by Rev. Dr. J. M. Dickey. Soul communion service after the sermon; all welcome.
ASSOCIATED BIBLE STUDENTS.
(I. B. S. A.)
All meetings W. O. W. Hall, East Sixth street, Alder, 1:30 P. M.
BAPTIST.
First, White Temple, Twelfth and Taylor streets—Rev. W. B. Hinson, pastor, 11:30; 7:30; 9:30.
METHODIST EPISCOPAL.
First, 15th and Commercial streets—Rev. W. B. Hinson, pastor, 11:30; 7:30; 9:30.
LUTHERAN.
First, 15th and Commercial streets—Rev. W. B. Hinson, pastor, 11:30; 7:30; 9:30.
...

Rev. J. E. H. Simpson, rector, Sunday, 7:30 A. M., holy eucharist; 10:15, morning prayer; 1:30, afternoon prayer; 5:30, evening prayer; 8:00, holy eucharist; Friday evening services 8 o'clock.
St. Paul's, Woodman, Rev. Oswald W. Taylor, rector, Sunday, 10:15, morning prayer; 1:30, afternoon prayer; 5:30, evening prayer; 8:00, holy eucharist; Friday evening services 8 o'clock.

General German Church of the Evangelical Association, corner Tenth and Clay streets—G. F. Liening, pastor, Sunday services: Sunday school at 9:30 A. M.; preaching services, 10:45, 11:30, 1:30, 3:30, 5:30, 7:30, 9:30.
German Evangelical Lutheran Zion Church (except the services of the 10:45 and 1:30 P. M. services) at Concordia College in the afternoon.

St. Paul's (Danish) Union avenue North and Oregon streets, Rev. J. E. H. Simpson, pastor—Services, 11 A. M. and 8 P. M.; Sunday school, 9:30 A. M.
St. John's, Sellwood—Rev. John D. Rice, vicar, 8 o'clock communion, except on first Sunday of the month; 9:30, morning prayer; 11:30, afternoon prayer; 5:30, evening prayer; 8:00, holy eucharist; Friday evening services 8 o'clock.

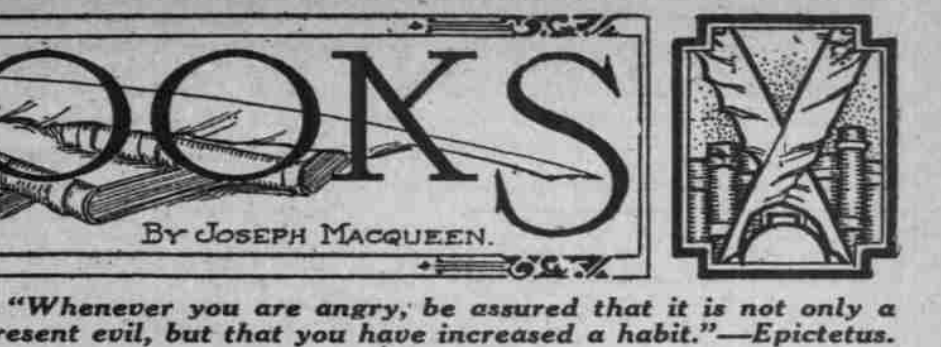
St. James' (English), corner West Park street, Allen street, and 10th—Rev. J. E. H. Simpson, pastor—Services at 11 A. M. and 8 P. M.; Sunday school, 9:30 A. M.
St. John's (Danish) Union avenue North and Oregon streets, Rev. J. E. H. Simpson, pastor—Services, 11 A. M. and 8 P. M.; Sunday school, 9:30 A. M.

St. Andrew's, East Ninth and Alberta streets—Rev. W. B. Hinson, pastor—Services, 11 A. M. and 8 P. M.; Sunday school, 9:30 A. M.
St. Paul's (Danish) Union avenue North and Oregon streets, Rev. J. E. H. Simpson, pastor—Services, 11 A. M. and 8 P. M.; Sunday school, 9:30 A. M.

St. James' (English), corner West Park street, Allen street, and 10th—Rev. J. E. H. Simpson, pastor—Services at 11 A. M. and 8 P. M.; Sunday school, 9:30 A. M.
St. John's (Danish) Union avenue North and Oregon streets, Rev. J. E. H. Simpson, pastor—Services, 11 A. M. and 8 P. M.; Sunday school, 9:30 A. M.

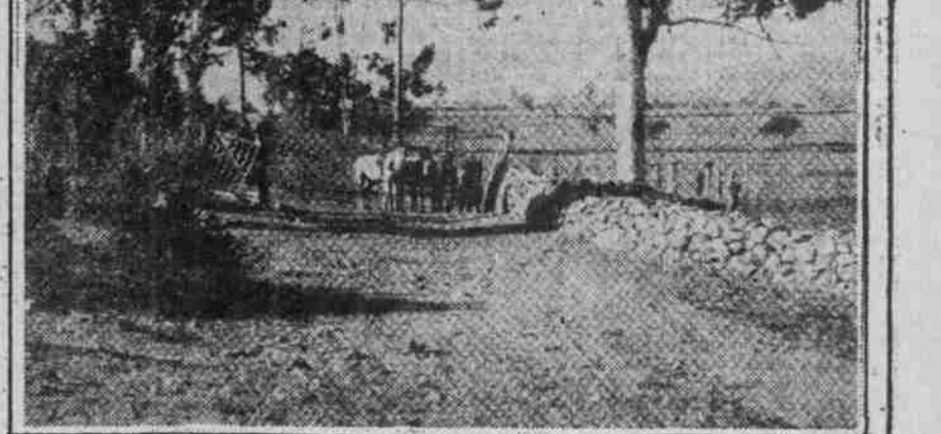
St. Andrew's, East Ninth and Alberta streets—Rev. W. B. Hinson, pastor—Services, 11 A. M. and 8 P. M.; Sunday school, 9:30 A. M.
St. Paul's (Danish) Union avenue North and Oregon streets, Rev. J. E. H. Simpson, pastor—Services, 11 A. M. and 8 P. M.; Sunday school, 9:30 A. M.

St. James' (English), corner West Park street, Allen street, and 10th—Rev. J. E. H. Simpson, pastor—Services at 11 A. M. and 8 P. M.; Sunday school, 9:30 A. M.
St. John's (Danish) Union avenue North and Oregon streets, Rev. J. E. H. Simpson, pastor—Services, 11 A. M. and 8 P. M.; Sunday school, 9:30 A. M.



By JOSEPH MACQUEEN.

"Whenever you are angry, be assured that it is not only a present evil, but that you have increased a habit."—Epictetus.



"A Chilean Landscape" from "South of Panama."

South of Panama, by Edward Elsworth Ross, F. B. D., L.L.D., illustrated, \$2.40. The Century Co., New York City.

South of Panama, by Edward Elsworth Ross, F. B. D., L.L.D., illustrated, \$2.40. The Century Co., New York City.

South of Panama, by Edward Elsworth Ross, F. B. D., L.L.D., illustrated, \$2.40. The Century Co., New York City.

South of Panama, by Edward Elsworth Ross, F. B. D., L.L.D., illustrated, \$2.40. The Century Co., New York City.

South of Panama, by Edward Elsworth Ross, F. B. D., L.L.D., illustrated, \$2.40. The Century Co., New York City.

South of Panama, by Edward Elsworth Ross, F. B. D., L.L.D., illustrated, \$2.40. The Century Co., New York City.

South of Panama, by Edward Elsworth Ross, F. B. D., L.L.D., illustrated, \$2.40. The Century Co., New York City.