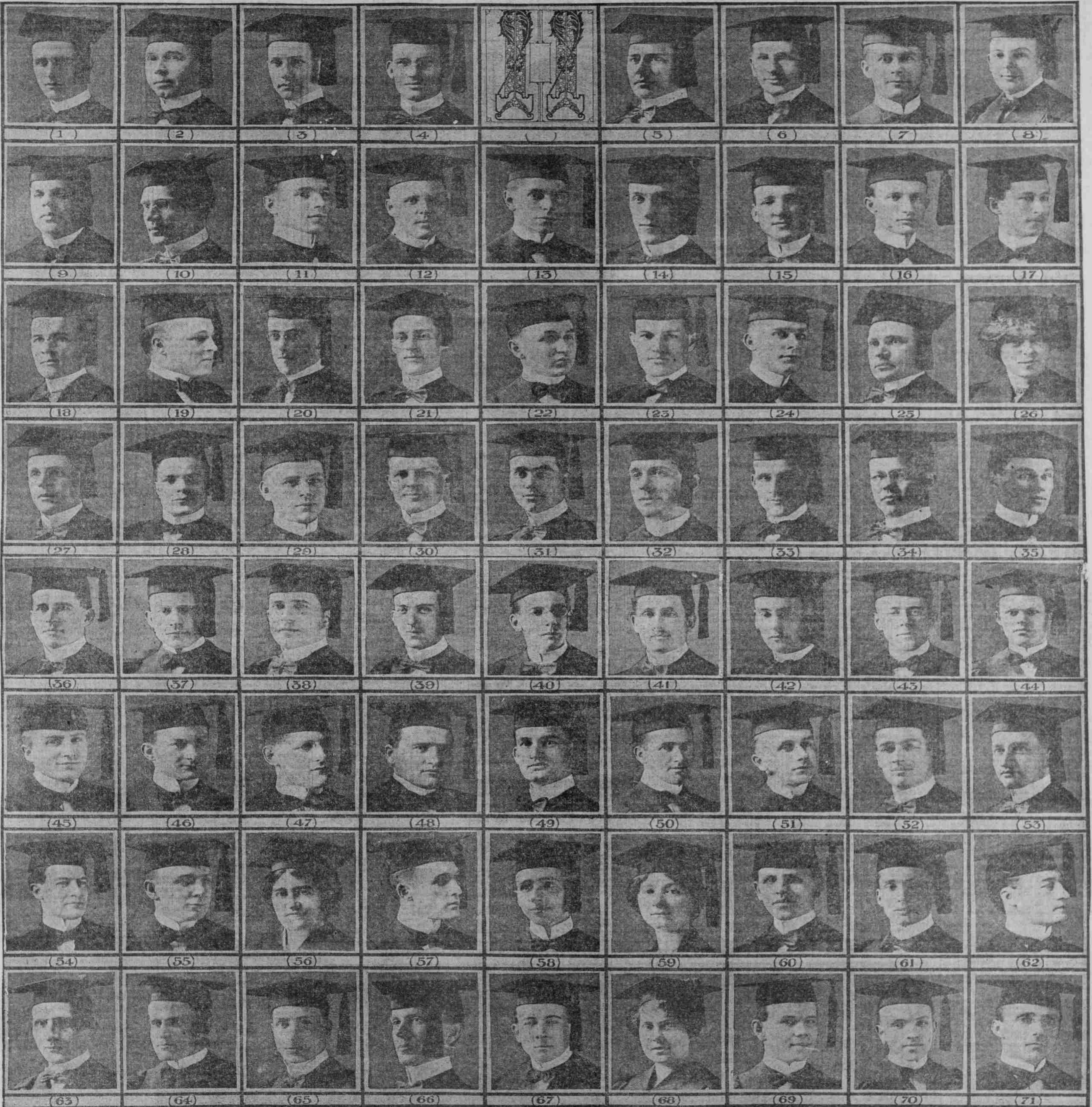


# New Graduates of North Pacific College Who Received the Degree of Doctor of Dental Medicine



Row 1: 1—Chester M. Allen. 2—Thomas Jefferson Anders, Jr. 3—Ray Appleby. 4—Thomas Rex Baldwin. 5—Robert Earle Blakemore. 6—Charles Herman Bleg. 7—Elmer Eleasur Blix. 8—Maurice Jay Butler.  
 Row 2: 9—Ray R. Butler. 10—John Clarence Campbell. 11—Lewis Christopherson. 12—Fred Louis Winder. 13—Ray Freeman Cole. 14—Charles Edward Corbett. 15—George Ellwood Dale. 16—Marion Ray Deiter. 17—Chester Cameron Edgar.  
 Row 3: 18—Bert Roy Elliott. 19—George Frank Freeburger. 20—Harlow Lee Gibbon. 21—William Bruce McDonald Gordon. 22—Adolph C. Grabbert. 23—Dallas E. Hardenbrook. 24—Walter Wellington Hart. 25—Edward Harford. 26—Asta Lucy Hauge.  
 Row 4: 27—Charles David Hester. 28—Wallace Hylander. 29—Harry Elmer Johnson. 30—Verne Lewis Johnson. 31—Francis Claudius Jones. 32—Harry J. Kelly. 33—Ernest Monroe Kenyon. 34—Claude Marshall Lovelace. 35—Wynn G. Manning.  
 Row 5: 36—Grant McClellan. 37—Earl Jefferson McClung. 38—Stuart McGuire. 39—Reginald Eric McKeon. 40—Grover Thomas McLaughlin. 41—Thomas Glenn McMartin. 42—James Albert McMillan. 43—Frank Everett McNett. 44—Fred Leland Mellor.  
 Row 6: 45—Ralph Ira Mills. 46—Chester Edward Nelson. 47—John Errol Newman. 48—Olaf August Olson. 49—Wallace H. Pasley. 50—Charles Theodore Prehn, Jr. 51—Charles Arthur Rae. 52—Robert Bruce Robbins. 53—Avery Roy Roberts.  
 Row 7: 54—Edward Cheney Roberts. 55—Alfred Frank Sempert. 56—Emma Elizabeth Shaughnessy. 57—Harley Roscoe Smith. 58—Lorenzo Fred Snyder. 59—Mary Stephenson. 60—Samuel Harold Sussman. 61—Walter Raleigh Swart. 62—Francis Charles Tierney.  
 Row 8: 63—Galen Adams Truesdell. 64—H. H. Van Eaton. 65—Henry Alexander Wagner. 66—Charles Jeremiah Webster. 67—Richmond Wells. 68—Elvera F. Westberg. 69—Victor Maurice Westberg. 70—Gordon Lee Whitcomb. 71—Clyde Bostwick Wilde.  
 72—Charles Clearland Cleek.

—Photos by the Pusleys.

## MANUAL TRAINING ADDED

**Bandon Schools to Start With Course in Higher Grades.**

BANDON, Or., May 22.—(Special.)—Plans and specifications for the installation of manual training in the Bandon public schools are being considered by the Board of Directors, and the opening of the Fall term will see this part of the local educational system. For the first year instruction in manual training will be confined to the

pupils in the three higher grades of the grammar schools.

Domestic science, which has been a part of the high school course of study, will be extended to the grades during the next semester, and the commercial course will be enlarged.

**Lebanon Men Work on Roads.**

LEBANON, Or., May 22.—(Special.)—“Good Roads Day” was observed in Lebanon Thursday. All business houses were closed during working hours and the men of the community worked on the roads leading into the city.

## LEBANON CLUB ELECTS

**Mrs. A. C. Lewis Chosen to Lead Woman's Study Organization.**

LEBANON, Or., May 22.—(Special.)—The Woman's Study Club closed a successful year's work on Tuesday. For a number of years the club has pursued the Bay View course of study, and has just completed the study of South America and Mexico. It was decided to discontinue the Bay View course and

a subject for study will be determined later.

The club was organized in 1906 and has a membership limited to 15. Four of the charter members are now members of the club.

Officers elected for the ensuing year are: Mrs. J. C. Booth, president; Miss Helen V. Crawford, vice-president; Mrs. G. A. Waggoner, secretary; Mrs. A. C. Lewis, treasurer.

Colonel Sherman Merrill, who was sworn in as Mayor of Laurel, Del., recently, is only 24 years old, and the only Republican ever elected Mayor there.

## CITY MERGER PROPOSED

**Including Hammond and Beach District in Warrenton Urged.**

FORT STEVENS, Or., May 22.—(Special.)—A recent election by which a section of Skipanon and Flavel became part of the City of Warrenton has given birth to a plan to include Hammond and the beach district about Fort Stevens in the larger City of Warrenton.

Considerable opposition to the plan

is said to be apparent, however, among some of the taxpayers of Hammond. The charter has a clause to the effect that the rate of taxation should not exceed 3 mills.

The rapid growth of Flavel since the coming of the Hill docks is rapidly filling up the space between Hammond and Warrenton. Consolidation is becoming a matter of necessity as well as desirability, those in favor of the plan assert.

**Kelso Women Hold Institute.**

RELSON, Wash., May 22.—(Special.)—

With Mrs. M. B. Platt, state president, and Mrs. M. C. Munns, state corresponding secretary, present the Kelso Women's Christian Temperance Union conducted a splendid institute Thursday. A number of interesting and educational addresses were presented by the two state officers and by local members. In the evening a medal contest was held, with a number of young persons participating.

In the 16th century dictionaries were chained in the schoolhouses as Bibles were in the churches, by reason of their costliness and rarity.