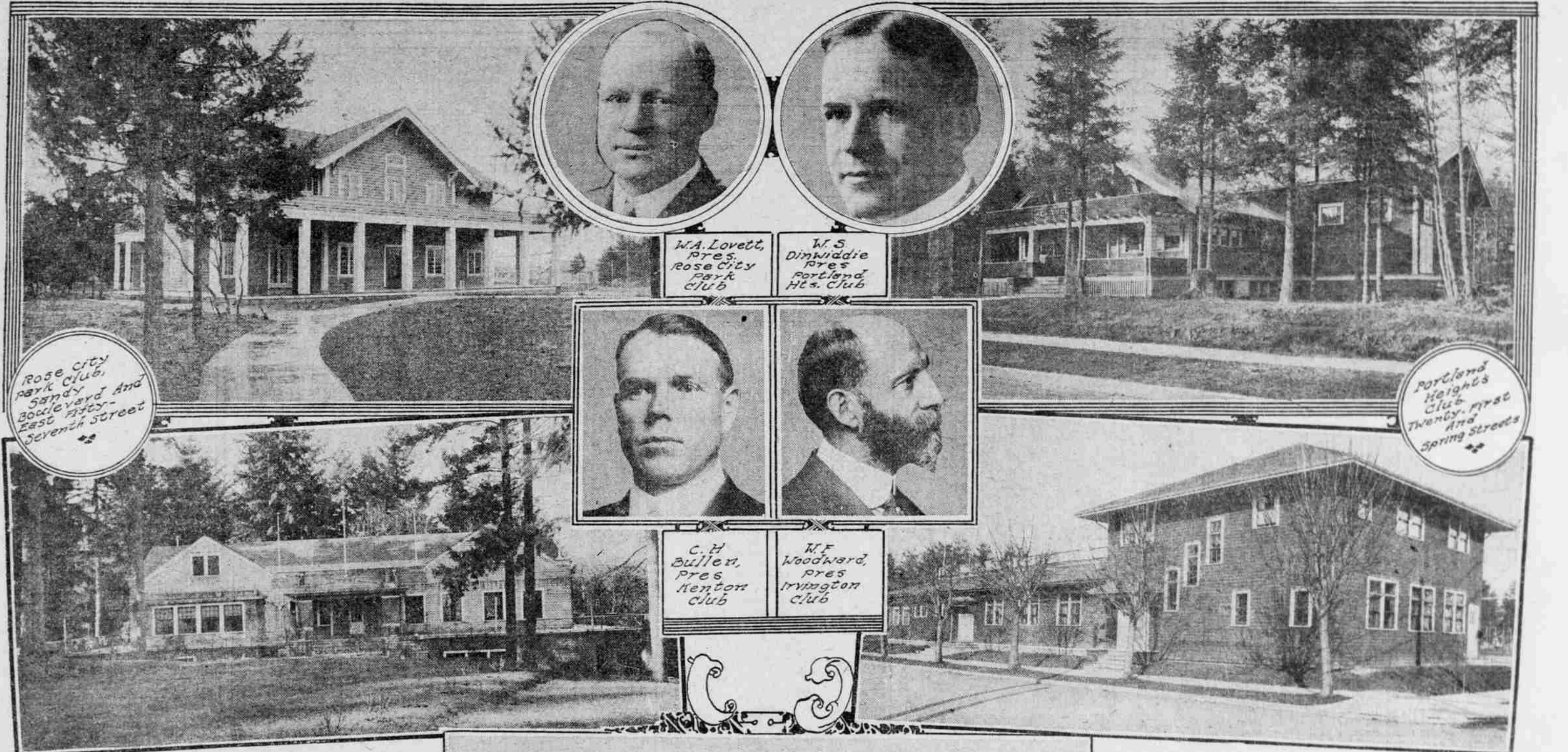


MANY HOMELIKE DISTRICT CLUBS THRIVE IN PORTLAND

Irvington, Portland Heights, Rose City Park, Laurelhurst and Kenton Support Organizations That Impart Community Spirit in Affording Entertainment for Young Folk and Grownups.



Rose City Park Club, 500 Broadway and East Taylor, Seventh Street

Portland Heights Club, Twenty First and Spring Streets

Kenton Club, 27 East Russet Street

Laurelhurst Club, New

Irvington Club, Thompson St. Near E. Twenty Second

Laurelhurst Park

Laurelhurst Club, New

Laurelhurst Club, New

Laurelhurst Club, New

Laurelhurst Club, New

Laurelhurst Club, New

Laurelhurst Club, New

Laurelhurst Club, New

Laurelhurst Club, New

Laurelhurst Club, New

Laurelhurst Club, New

Laurelhurst Club, New

Laurelhurst Club, New

Laurelhurst Club, New

Laurelhurst Club, New

Laurelhurst Club, New

Laurelhurst Club, New

Laurelhurst Club, New

Laurelhurst Club, New

Laurelhurst Club, New

Laurelhurst Club, New

Laurelhurst Club, New

Laurelhurst Club, New

Laurelhurst Club, New

BY CHESTER A. MOORES.
Do you belong to a community club? Do you enjoy the benefits and comforts of a neighborhood home? If not, and you want to find out what you are missing, ask your friends in Irvington or Portland Heights, in Rose City Park, in Laurelhurst or in Kenton.

Portland, the pioneer of the Northwest in the social center movement which now is sweeping all large cities, has five attractive community club buildings which serve as social clearing-houses in as many residential districts.

These are the Irvington Club, on the north side of Thompson street between East Twenty-first and East Twenty-second streets; the Portland Heights Club, on the southwest corner of Twenty-first and Spring streets; the Rose City Park Club, at the intersection of Sandy road with East Twenty-seventh street; the Laurelhurst Club, on East Ankeny street between Laurelhurst avenue and East Thirty-ninth street; and the Kenton Club, on West Russet street between Fenwick street and Pa. avenue.

Other Buildings Planned.
Plans have been put forward recently in each addition, Irvington Park and Westover Terraces for the construction of similar buildings in those localities.

The standard community club of Portland and the one of the entire Northwest which represents the model ideas for such an institution is the Irvington Club, the first of its character organized in Oregon or Washington.

It was 18 years ago that Walter M. Cook, Walter A. Goss, Vernon Hardy, Frank J. Raley, Dr. E. W. Moore, Ralph W. Wilbur and William F. Woodward organized a modest little tennis club that has since grown into a powerful institution for good and happy living.

The club's principal attention, naturally, is directed toward the growing children. The club gives these children opportunities of becoming acquainted under happy neighborly surroundings with the children of other clubs.

District Made Popular.
The club has been a powerful factor in making Irvington a popular community to reside in.

Natorium in Planned.
The proposed new building will, when completed, satisfy every social and athletic possibility.

Neighborhood Use Allowed.
Whenever desired the building is used by the women or men of the neighborhood for afternoon teas, or for afternoon or evening affairs of any kind.

Winter a series of educational lectures was given. The attempt of the club officials to keep the building in use all the time has usually proved successful. Card parties, dances, social reunions of college associations and outdoor dances held on the tennis courts in the summer are among the jolliest affairs.

The six tennis courts at the Irvington Club are considered the best in the Northwest. They have been the scene of many championship tournaments and have been visited by some of the most skillful tennis "sharks" in the country.

parties are held on the second Wednesday night of each month, and the dances on the fourth Wednesday evening. These affairs are for the members and their friends.

The women arranged a Christmas party with a Santa for the children, at which they were ably assisted by the teachers and pupils of the Kenton School. The school orchestra rendered a number of selections, and the pupils gave the usual holiday programme.

The success of the Kenton Club has been due to the fact that each member has seemed willing to put his shoulder to the wheel when he is needed to carry forward any club enterprise.

The club recently elected the following officers to serve during the coming year: C. H. Bullen, president; Dr. S. M. Strohecker, vice-president; John H. Seyfer, secretary, and Warren Keeler, treasurer.

There are five students from Oregon in the Johns Hopkins Medical School, namely, Harold Bean, Carl Martzloff, Harold Bates, of Portland; Harvey Slater, of Salem, and Chris Sturgis, of Pendleton. They are all enthusiastic about the training that they are receiving at the Johns Hopkins.

Among the Oregon residents who called from Philadelphia on the Great Northern in its initial run through the Panama Canal were Drake C. O'Reilly, Ione Lewis and George Trowbridge, of Portland, and Colonel Young, of Vancouver Barracks.

As the winter has advanced the Oregon bread apples, like the leaves of bread, have grown smaller. The price of bread has finally been raised to 6 cents. The loaves would be taken for 5 cents if they were further decreased to meet the rising price of wheat.

So long as the restaurants continue to serve Northwestern apples there will be no objection. Oregon students at Columbia have the habit of causing a disturbance in the fruit stands where any but the Western product is offered.

The Oregon and Washington apples have no serious competitors at this time of the year. There are a few fancy packed Virginia apples in the market with red nettings, reporting insupportably the fine flavor that they possess.

George Merritt of Medford, formerly director of education for the Boy Scouts of America, has resigned his position to accept a position with the Municipal Research Bureau. He recently returned from Albany, where with other experts, he investigated the books of the different state departments, with a view to advising the

incoming administration as to certain reforms. Pete Burns, well known in Portland, still is doing an orderly time with his college men's trio. He has been playing at the Orpheum in Brooklyn, but leaves on a series of out-of-town engagements shortly.

Professor William Guthrie, who has tried more cases before the Supreme Court of the United States than any other living man, paid Oregon a rather doubtful compliment in a lecture this week before his class in constitutional law at Columbia University. "Oregon is the most progressive or advanced or radical state," he said, putting emphatically too much emphasis upon the "radical."

POTATO STARCH DATA OUT

Plant to Cost About \$15,000 Will Care for 3000 Acres, Is Estimate.

EUGENE, Or., Feb. 15.—(Special.)—A potato starch plant costing from \$10,000 to \$15,000 and properly conducted during a season will take care of the cull product from about 3000 acres, according to figures gathered by the University of Oregon school of commerce. The University says: "Potato starch commands three to four cents a pound in the New England market. It brings, as a rule, one and one-half times the price of corn starch. Analysis of more than 50 varieties of potatoes grown in Oregon gives an average starch content of 18 per cent."

"Potato starch commands three to four cents a pound in the New England market. It brings, as a rule, one and one-half times the price of corn starch. Analysis of more than 50 varieties of potatoes grown in Oregon gives an average starch content of 18 per cent."

"Potato starch commands three to four cents a pound in the New England market. It brings, as a rule, one and one-half times the price of corn starch. Analysis of more than 50 varieties of potatoes grown in Oregon gives an average starch content of 18 per cent."

"Potato starch commands three to four cents a pound in the New England market. It brings, as a rule, one and one-half times the price of corn starch. Analysis of more than 50 varieties of potatoes grown in Oregon gives an average starch content of 18 per cent."

"Potato starch commands three to four cents a pound in the New England market. It brings, as a rule, one and one-half times the price of corn starch. Analysis of more than 50 varieties of potatoes grown in Oregon gives an average starch content of 18 per cent."

"Potato starch commands three to four cents a pound in the New England market. It brings, as a rule, one and one-half times the price of corn starch. Analysis of more than 50 varieties of potatoes grown in Oregon gives an average starch content of 18 per cent."

"Potato starch commands three to four cents a pound in the New England market. It brings, as a rule, one and one-half times the price of corn starch. Analysis of more than 50 varieties of potatoes grown in Oregon gives an average starch content of 18 per cent."

"Potato starch commands three to four cents a pound in the New England market. It brings, as a rule, one and one-half times the price of corn starch. Analysis of more than 50 varieties of potatoes grown in Oregon gives an average starch content of 18 per cent."

"Potato starch commands three to four cents a pound in the New England market. It brings, as a rule, one and one-half times the price of corn starch. Analysis of more than 50 varieties of potatoes grown in Oregon gives an average starch content of 18 per cent."

"Potato starch commands three to four cents a pound in the New England market. It brings, as a rule, one and one-half times the price of corn starch. Analysis of more than 50 varieties of potatoes grown in Oregon gives an average starch content of 18 per cent."

"Potato starch commands three to four cents a pound in the New England market. It brings, as a rule, one and one-half times the price of corn starch. Analysis of more than 50 varieties of potatoes grown in Oregon gives an average starch content of 18 per cent."

"Potato starch commands three to four cents a pound in the New England market. It brings, as a rule, one and one-half times the price of corn starch. Analysis of more than 50 varieties of potatoes grown in Oregon gives an average starch content of 18 per cent."

"Potato starch commands three to four cents a pound in the New England market. It brings, as a rule, one and one-half times the price of corn starch. Analysis of more than 50 varieties of potatoes grown in Oregon gives an average starch content of 18 per cent."

OREGONIANS IN EASTERN CITY ONE HAPPY FAMILY

Oregon and Oregon Agricultural College Alumni in Schenectady Form Close Corporation—Five Oregon Students at Johns Hopkins.

BY ARTHUR M. GEARY.
NEW YORK, Feb. 20.—(Special.)—Harold Cockerline, of Eugene, a 1912 graduate of the University of Oregon, came to New York from Schenectady, this week, with a strange tale.

"Tell them for me," he says, "that the Oregon Agricultural College students are a fine crowd. The Oregon and Oregon Agricultural College alumni in the employ of the General Electric Company, form one large happy family. We camped on Ballston Lake during five months last summer and are going to do the same this summer. During the three years that I have been at Schenectady we have had our parties together, gone on picnics, and in fact formed a close corporation."

"There are a couple of University of Washington alumni that club with us. Twice we have gone down to Poughkeepsie and yelled ourselves hoarse for the crew from Washington."

"Don't forget to mention that I have found that the Oregon Agricultural College graduates are hard-working, capable students and good fellows. You could not find a better natured fellow than McMillan. Last September, when he left to marry a classmate and bring her back, we paddled a cowbell around his neck without making him angry."

Among the alumni of the Oregon Agricultural College at Schenectady are Mr. and Mrs. H. Phandorfer, who have been the proud parents of a baby girl, christened Dorothy, since January 20. Mr. Phandorfer is in the Western sales section of the switchboard department. The others from the Agricultural College are Mr. and Mrs. F. O. McMillan (Elizabeth Denny), of Salem, in the industrial control department; "Shorby" Gordon, of Portland, in the engineering department; and George Morris, in the student engineer department. The University of Oregon alumni are J. P. McGuire, whose home is now in Gigand Junction, Colo., and Harold Cockerline, of Eugene. F. W. Peters and John Dewhurst, of Seattle, are the two University of Washington graduates who have been adopted by the Oregon family.

It will be of interest to sportsmen in Oregon to know that a Federal District Court sitting in Arkansas, had held unconstitutional the statute of Congress, passed March 4, 1913, regulating the hunting of migratory birds. A note upon this case, United States vs. Shauver (214 Fed. 154), in the February number of the Columbia Law Review reads: "The argument that the migration of birds constitutes interstate commerce is more ingenious than convincing."

Last Fall there was considerable complaint in Oregon concerning the new Federal law, especially in Klamath County. It shortened the open season for ducks and geese and prevented

shooting before sunrise or after sunset.

There are five students from Oregon in the Johns Hopkins Medical School, namely, Harold Bean, Carl Martzloff, Harold Bates, of Portland; Harvey Slater, of Salem, and Chris Sturgis, of Pendleton. They are all enthusiastic about the training that they are receiving at the Johns Hopkins.

managed by a committee of three women who serve for one month at a time.

The present board of directors of the club is composed of W. S. Dinwiddie, President; D. A. Pattullo, treasurer; T. J. Geisler, William Young, W. J. Patterson, Rufus Holman, and J. W. Hammond, secretary.

Club's Entertainments Novel.
For novelty and variety of entertainment the Rose City Park Club is perhaps the leader. For instance last Friday night "Deestrick Skule" was staged at the club building under the direction of Mrs. D. J. Russell as teacher.

Other features on the calendar for the half year are a minstrel show, an April fool party for children, a cotton ball, children dancing parties, auction bridge, and informal dancing parties. The social activities of Laurelhurst center around the club. During the season many important formal affairs are held, as well as frequent informal evening parties and afternoon affairs.

Every other Friday extension lectures are given by the faculty of Reed College, followed with an informal dancing party.

The proximity of the park to the club makes it ideal for the mothers who can entertain their friends at the club while the children romp in the shade of the towering firs, free from danger of passing cars or vehicles.

The Laurelhurst Club is so arranged that members may hold private parties, while other members may enjoy the upper quarters without interfering with the private entertainment. It was opened from 12 o'clock until midnight and a caretaker is always in attendance.

Women Raise Funds.
Funds to build the club were raised by subscription to life memberships by the regular members. The furnishings were purchased from funds raised by the women of the club at entertainments held prior to the erection of the building.

The club has an active membership which takes a great interest in the social work of the club, as well as its activities in civic improvement. It was through the work of the club that arc lights were installed in the district and vacant lots kept cleared of weeds and undergrowth.

At the recent election H. S. McCutchen was elected president; Allen McCutchen, vice-president; Dr. E. T. Parker, treasurer; and Owen Summers, secretary. The directors are Mr. J. C. Engleish, Mrs. H. S. McCutchen and Mrs. J. O. Humphrey.

The influx of Portland community club group is the Kenton Club, composed of the residents of Kenton and surrounding territory, which is now entering upon its second successful year. The handsome clubhouse is at 27 West Russet street, just west of Patton avenue.

The club proper is of the bungalow type with large reception rooms, rest-rooms and a large cement basement with kitchen, shower bath and all the modern conveniences. At the rear is a large hall, 40 by 60 feet, with an excellent floor. This is used for a gymnasium, dances, card parties, concerts, etc. Large tennis courts that will be ready for the players early in Spring.

Among the club members are a large number of active tennis players who have planned an active summer on the courts. They hope to make tennis one of the prominent features of the season.

Social Affairs Many.
During the past year various committees arranged many social entertainments, card parties, dances, lectures and a most successful Christmas

party for the children of the entire neighborhood. The progressive 500

room, kitchen and dining-rooms. On the second floor are the billiard and cardrooms, shower baths and dressing-rooms. The furnishings were chosen to give an air of simple elegance throughout the building.

The social activities of Laurelhurst center around the club. During the season many important formal affairs are held, as well as frequent informal evening parties and afternoon affairs.

Every other Friday extension lectures are given by the faculty of Reed College, followed with an informal dancing party.

The proximity of the park to the club makes it ideal for the mothers who can entertain their friends at the club while the children romp in the shade of the towering firs, free from danger of passing cars or vehicles.

The Laurelhurst Club is so arranged that members may hold private parties, while other members may enjoy the upper quarters without interfering with the private entertainment. It was opened from 12 o'clock until midnight and a caretaker is always in attendance.

Women Raise Funds.
Funds to build the club were raised by subscription to life memberships by the regular members. The furnishings were purchased from funds raised by the women of the club at entertainments held prior to the erection of the building.

The club has an active membership which takes a great interest in the social work of the club, as well as its activities in civic improvement. It was through the work of the club that arc lights were installed in the district and vacant lots kept cleared of weeds and undergrowth.

At the recent election H. S. McCutchen was elected president; Allen McCutchen, vice-president; Dr. E. T. Parker, treasurer; and Owen Summers, secretary. The directors are Mr. J. C. Engleish, Mrs. H. S. McCutchen and Mrs. J. O. Humphrey.

The influx of Portland community club group is the Kenton Club, composed of the residents of Kenton and surrounding territory, which is now entering upon its second successful year. The handsome clubhouse is at 27 West Russet street, just west of Patton avenue.

The club proper is of the bungalow type with large reception rooms, rest-rooms and a large cement basement with kitchen, shower bath and all the modern conveniences. At the rear is a large hall, 40 by 60 feet, with an excellent floor. This is used for a gymnasium, dances, card parties, concerts, etc. Large tennis courts that will be ready for the players early in Spring.

Among the club members are a large number of active tennis players who have planned an active summer on the courts. They hope to make tennis one of the prominent features of the season.

Social Affairs Many.
During the past year various committees arranged many social entertainments, card parties, dances, lectures and a most successful Christmas

party for the children of the entire neighborhood. The progressive 500

WOMEN IN VIENNA

VIENNA, Feb. 21.—Everybody does their duty for the endangered fatherland. The poor woman on her way to factory contributes her mite to the collection boxes. The rich women open their parlors, bedrooms and kitchens to the wounded officers and soldiers.

Not only do the women of Austria, France, England, Germany suffer from war's deprivations, but the women in America are every day suffering from the many ills that women are heir to.

The diseases which weaken and torment women may in almost all cases be cured by the use of Dr. Pierce's Favorite Prescription. It establishes regularity, heals inflammation and ulceration, and cures women's weakness.

Every woman who has reason to believe that backache, headache, unnatural pain, low spirits, sleepless nights, irregularities or a catarrhal condition is caused by a derangement of the woman's functions, owes it to herself and dear ones to speedily overcome the trouble before a general breakdown causes permanent prostration.

Dr. Pierce's Favorite Prescription is a temperance remedy that any ailing woman can safely take because it is glycerine containing tonic properties and is not a secret remedy because its ingredients are printed on wrapper.

Get Dr. Pierce's Favorite Prescription today, either in liquid or tablet form, at any dealer in medicines, if you want to better your physical condition surely and speedily. Every ingredient in "Favorite Prescription" is printed along with the directions. If you want a specialist in women's diseases to diagnose your case, consult Dr. Pierce by letter, correspondence private and confidential, address Dr. Pierce, Invalids' Hotel, Buffalo, N. Y.—Adv.