

CLOSED CARS PLEASE

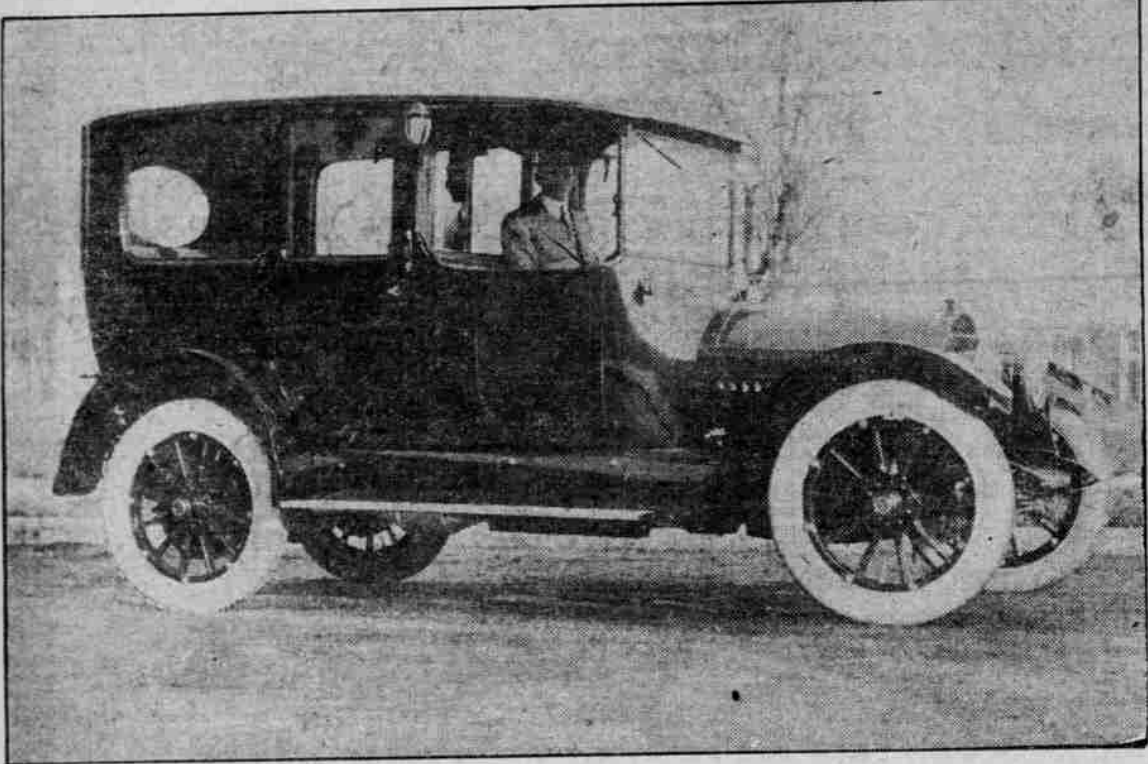
Demand of Winter Brings Out Many Beautiful Models.

CADILLAC HIGH IN RANK

Unusual Body Is Supplemented by Eight-Cylinder Motor That Makes Driving Amidst Traffic More Simple for Women.

One of the greatest signs of the standardization of the motor car is the constantly increasing demand for a closed car which combines elegance and luxury with practicality. This winter has produced many beautiful models from the leading manufacturers and one of the most beautiful is that of the Cadillac, mounted on the new eight-cylinder chassis.

CADILLAC LIMOUSINE, WHICH WILL BE FEATURED BY COVEY MOTOR CAR CO.



EIGHT-CYLINDER CLOSED CAR, JUST OUT OF THE CADILLAC FACTORIES.

In former years, when models changed with each season, the demand for the closed car was not as great as it might have been, but there was still a better reason. That was the fact that motors formerly were considered more or less of a Summer vehicle, which had no business being out of the garage in winter.

Closed Cadillac Is Impassable.
Happily, that idea has been swamped by the demands of modern life. The cars were built so as to be as much or more of a winter vehicle than a summer one.

Weight of Car Is One Piece.
We are exceptionally proud of the body which this car carries. It is of aluminum throughout with a special frame. No body strains which the car is ever apt to endure will in any way rack this construction.

Driving Made Simplest.
Sitting in that car convinces all that improvement in essentials is impossible. The eight motor makes driving the simplest. The woman, especially, appreciates this motor, for it makes trips through the most crowded downtown sections a simple matter.

NEW MOTOR TRUCK OUT

PACKARD COMPANY HAS LINE RANGING FROM 1 TO 6 TONS.

Each unit is designed especially for duties required of vehicles of its particular capacity.

An entirely new line of motor trucks is announced by the Packard Motor Car Company, of Detroit. The series, ranging in capacity from one to six tons, inclusive, possesses numerous features that spell economy to the user and overcome the difficulties formerly identified with the installation of worm drive.

The one-ton Packard is a new addition to this well-known family and marks the entrance of the company into the light duty field. Each unit is designed especially for the duties required of a truck of that capacity. So carefully have the Packard engineers developed the new product that it has taken three years for the forework. The preliminary trucks during the final test were driven a distance equivalent to five times around the earth. This mileage was established over the roughest road conditions to be encountered between Michigan and the Rocky Mountains. The matured design which has been

CARS USED IN WAR

Value of Trucks Proved by Service Given to Armies.

TROOPS AND GUNS DRAWN

Ambulance Motors Rush Wounded to Hospitals From Firing Line While Heavy Artillery Is Moved by Powerful Auto Engines.

The recent experiments with the motor car in the war have taught many useful lessons, and suggested interesting ideas. The possibility of defeating a sudden raid of the enemy on either side depends largely, not only on the number of men that could be concen-

CARS USED IN WAR

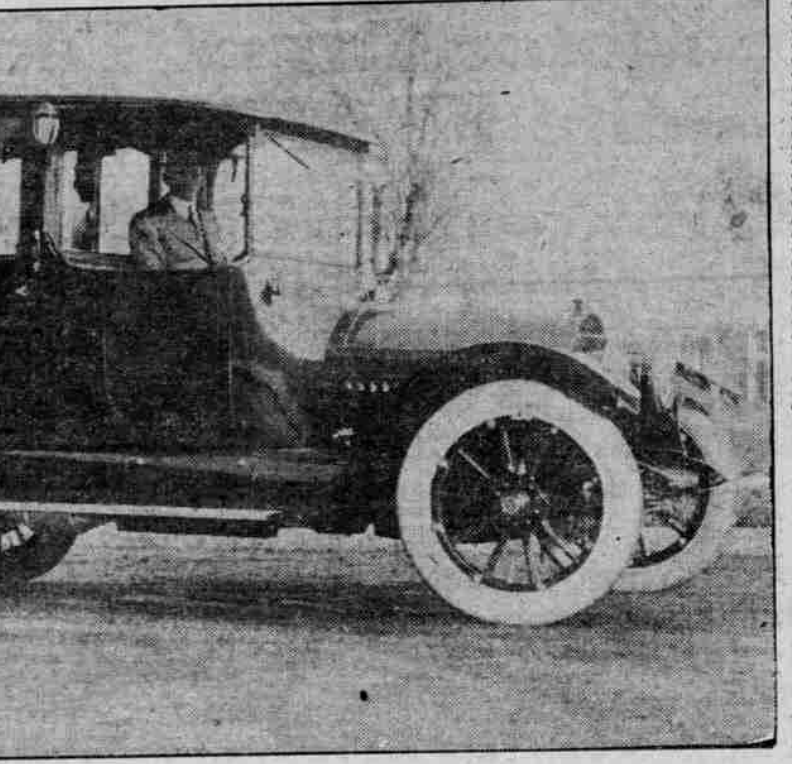
Value of Trucks Proved by Service Given to Armies.

TROOPS AND GUNS DRAWN

Ambulance Motors Rush Wounded to Hospitals From Firing Line While Heavy Artillery Is Moved by Powerful Auto Engines.

The recent experiments with the motor car in the war have taught many useful lessons, and suggested interesting ideas. The possibility of defeating a sudden raid of the enemy on either side depends largely, not only on the number of men that could be concen-

CADILLAC LIMOUSINE, WHICH WILL BE FEATURED BY COVEY MOTOR CAR CO.



EIGHT-CYLINDER CLOSED CAR, JUST OUT OF THE CADILLAC FACTORIES.

largest in the world, are prepared for early deliveries of the new models.

CADILLAC IS RECOGNIZED

SAN DIEGO FAIR OFFICIALS PURCHASE THREE CARS.

All Are to Do Special Service in Expedition—Others to Be Used at San Francisco.

The Covey Motor Car Company, local agent for the Cadillac eight-cylinder automobile, is rather proud of the fact that the car has been given official recognition by the officials of the Panama-California Exposition at San Diego.

Movies to Aid in Campaign for "Safety First."

Warnings Against Accidents to Appear on Screens of Baltimore Picture Houses at Instance of Police and Auto Club.

The board of police commissioners of Baltimore, in co-operation with the Automobile Club of Maryland has arranged with the management of all moving-picture parlors in Baltimore to display, in the near future, the following "safety first talks" on the screen.

1. "It is dangerous for children to play in the streets; they may be injured or killed by passing vehicles. Catching on behind vehicles is also a dangerous practice. Parents, be warned in time."

2. "Save yourself from accidents by crossing the streets at the crossings only; look both ways before crossing and be sure the way is clear."

3. "Drivers of all kinds of vehicles will avoid accidents and save themselves from arrest and consequent loss of time and money by observing the traffic regulations. Copies of these regulations will be sent gladly on application. Co-operate with us to make the streets reasonably safe."

4. "Drivers of automobiles and motorcycles are warned to keep within requirements of the motor vehicle laws and the traffic regulations. Do your part to help the police in trying to safeguard pedestrians and other vehicles from accidents; do not take chances."

CADILLAC LIMOUSINE, WHICH WILL BE FEATURED BY COVEY MOTOR CAR CO.



EIGHT-CYLINDER CLOSED CAR, JUST OUT OF THE CADILLAC FACTORIES.

trated at a given point, but also on the rapidity of the concentration. Now, to get troops rapidly to the coast, either railways or motorcars obviously must be used. It is undeniable that for long distance, the railways might be as rapid as a means of conveyance, nevertheless motorcars could transport troops more quickly to any strategic point on a coast than would be possible with the best arrangements capable of being made by railway.

Troops Transported Easily.
For years many of the foreign governments have organized motorcar owners, and already in England mobilization by motorcars has been made easier and complete. Assuming that the number of defenders to be transported to any given point as a flying squadron in the preliminary stages of an attack would not exceed 25,000, it should be possible by the use of 500 or 700 cars to transport this number easily. As regards equipment, motor buses, carrying baggage, could accomplish 12 miles per hour, and trailers could follow on an 8-mile per hour average. Thus on journeys, say of 100 miles, buses running at 10 miles per hour would not be more than five hours behind the columns at 20 miles per hour, if all started at once.

Artillery Moved by Trucks.
With regard to the artillery, attention has been called to the rapid method of carrying the German and French militia by mechanical power, in large numbers. To concentrate the artillery dozens of batteries have been moved by motor power, accompanied by the infantry. Other uses of the motorcar in the war have been for wireless telegraphy, scouting and general field staff work. For searchlight purposes, the powers of the motorcar have been used, as also for pumping and sawing.

In connection with the operation of motorcars upon the battlefield, their value now is being fairly tested, for until the present conflict, there have been no campaigns in which good roads have been available since the motorcar became a practical and trustworthy vehicle.

It is agreed generally that in the present conflict the armies have not been larger in comparison with those of the past, and the front lines

more extended, but the control has been difficult, even with the aid of the wireless and other improved methods of communication, thus when once an attack has been launched in many of these conflicts, it is obvious that if any alteration of plans at all was to take place, the commander must be able to move along the lines with the utmost rapidity, with reserves ready to operate on either flank at any critical moment. So with about 5000 cars, a force of 20,000 men has been made available at the required moment at almost any point.

Ambulance Cars in Use.
The use of motorcars for ambulance purposes also has been made effective. During the present war it has been of the greatest importance to get the wounded soldier away from the front as rapidly as possible, to the hospital centers. Motorcars have been proved to be extremely useful in this respect, left in the rear ready for use to be towed by a powerful machine, so as to eliminate the vibration which is inevitable when a vehicle is propelled by its own engine. In addition also to mechanically propelled artillery, machine guns of the largest character,

such as siege cannons and howitzers have been used, mounted upon self-propelled carriages.

Such guns, by their rapidity of movement, have been able to effect great destruction on the enemy's convoys, or masses of infantry and cavalry, and wide detours have been effected for this purpose.

Thus nearly every possible use of motorcars is being made in the present conflict, and has had a great influence, as all war problems always must depend largely upon mobility.

Illustrating Comparison.
Boston Transcript.
She entered the department store and complained about a lamp she had purchased, demanding that it be taken back.
"What's the matter with it, madam?"
"It has all the faults of my husband and none of his virtues."
"Please explain yourself."
"Well, it has a good deal of brass about it, it is remarkably brilliant, requires a great deal of attention, is unsteady on its legs, flares up occasionally, is always out at bedtime and is bound to smoke."

Laher-Full-Elliptic Ford Spring

\$25.00 Installed
(Including Bumper)

You Ride on the Springs

All your weight is on the springs of your car, all the jars and vibrations of the wheels come on the springs. Your car safety and your personal safety and comfort depend on the springs.

10 DAYS' TRIAL
All Laher-Full-Elliptic Ford Springs are sold with the understanding that if not satisfactory after 10 days' trial the purchase money will be refunded.

SAFE
SILENT
COMFORTABLE

DEALERS
We have some open territory in Oregon, Washington and California. Our sales contract is liberal and co-operative. Write or wire today for full information in regard to our sales proposition.

Written Guarantee for Six Months
There are many features of the LAHER-FULL-ELLYPTIC FORD SPRING. It adds greatly to your comfort. Gives your Ford a distinctive appearance. Lengthens the life of your engine. Holds the front axle firmly in position, and aids in your protection against accidents.

Laher-Full-Elliptic Ford Spring Co.

C. AERNE, JR., MGR. PORTLAND, OR.
25 N. FOURTEENTH ST. OUR EXHIBIT AT THE AUTO SHOW BOOTH

Rob-Roy Shock Absorber

Makes Rough Roads Smooth

See this demonstrated at the Auto Show, Jan. 23-30.

John A. Walter Co., Inc.
335 Ankeny Street, Portland, Oregon. State Agent.
Agents Wanted.

This is the one tire you can recommend to your friends

AJAX Tires

Guaranteed 5000 Miles

in writing

Non-Skid Until Worn Out

There are tires and tires. Ajax Tires are the ones to recommend to your friends. They are guaranteed in writing for 5000 miles. It isn't an idle warranty. It has been made for 9 years. It is time tried. The Ajax business grows in each season, as one Ajax user tells his Ajax satisfaction to his friends.

Tires are fashioned of rubber and fabric and these two elements are fused by vulcanization. But added to fine upriver Para rubber and Sea Island long staple fabric, Ajax Tires possess the steadfast determination of the makers for Quality. Ajax Tires are the best Tires in the world.

Ajax are the first tires to be guaranteed in writing and the first to set up 5000 miles as the minimum measure of their anticipated performance. The demand for Ajax Tires has always exceeded the supply. More and more Ajax Tires are made in each year, but Ajax dealers have never yet been able to secure all the Ajax Tires motorists have wanted to buy.

Ajax Tires are on all four wheels of cars of Ajax users. Have you noticed cars with a hybrid collection of four makes? The owner is still floundering. Ajax users are content, for they have solved the problem. Be an Ajax Booster!

"While others are claiming Quality we are guaranteeing it"

FACTORY BRANCH

AJAX-GRIEB RUBBER CO.

329 ANKENY ST., PORTLAND, OREGON.

HERCULES TIRES

The Tire That Stole the Skid From the Automobile

A Superior Tread That Insures You Safety and Durability

Sea Island Fiber on edge, placed at acute angles with road, interwoven with high-grade rubber, prevents cuts, punctures, skidding and insures 5000 miles.

F. H. SHERMAN, Gen. Agt.
63 Sixth St.

KENNEDY AUTO PAINTING COMPANY, INC.

Largest and Best Equipped Shop in the Northwest
Covey Building, Twenty-first and Washington
Marshall 5351, Main 6244