

THE DEBILITATING MORE BY TALK THAN WAR

Spellbinders Called Worst Foe of Industry and Progress in Country.

AID TO CAPITAL ASKED

Higher Rates Found Need of Rail Lines and Encouragement for Other Corporations to Make Prosperity Certain.

BY HENRY B. JOY.

President Packard Motor Car Company and Lincoln Highway Association.

The war has been a sudden shock and requires a little time for business to take inventory and find out the damage.

No man knows yet the ramifications of the war's good or evil effects.

American finances are being adjusted as to foreign exchanges which have suffered so acutely.

Reserve Bank Relieves Worry. The Federal Reserve bank situation is developing favorably.

The general industrial and commercial conditions in the United States have been suffering for years.

Politicians have been gathering votes and riding in office by attacking and misrepresenting business and wealth.

Some Congressmen, politicians and newspapers would say anything, true or untrue.

Personally I have constantly refused to join in attacks on the railroads as to excessive freight rates.

Now then, with this background, I want to say that even before the war the ability of this country to absorb issues of American securities was at a low ebb.

Railroads, industrial and other companies had to resort to the comparatively limited use of short-time securities to get necessary funds.

Public Generally Shy. Now the investing public is shy. It has seen its investments go down to doubtful or lesser value.

But of greater importance has been the lessening of earning capacity of our corporations and railroads.

In the face of our declining prosperity, which is, in effect, not simply ceasing to contract.

Higher Rates Required, He Says. The American people's ability to buy, to invest, was at low ebb before the war.

Unless American railroads can be permitted to charge higher freight rates or reduce wages.

A foreign security holder is in exactly the same situation as an American savings bank or insurance company.

Even without the war, we have so depreciated the value of our own securities, and therefore the securities issued representing these properties.

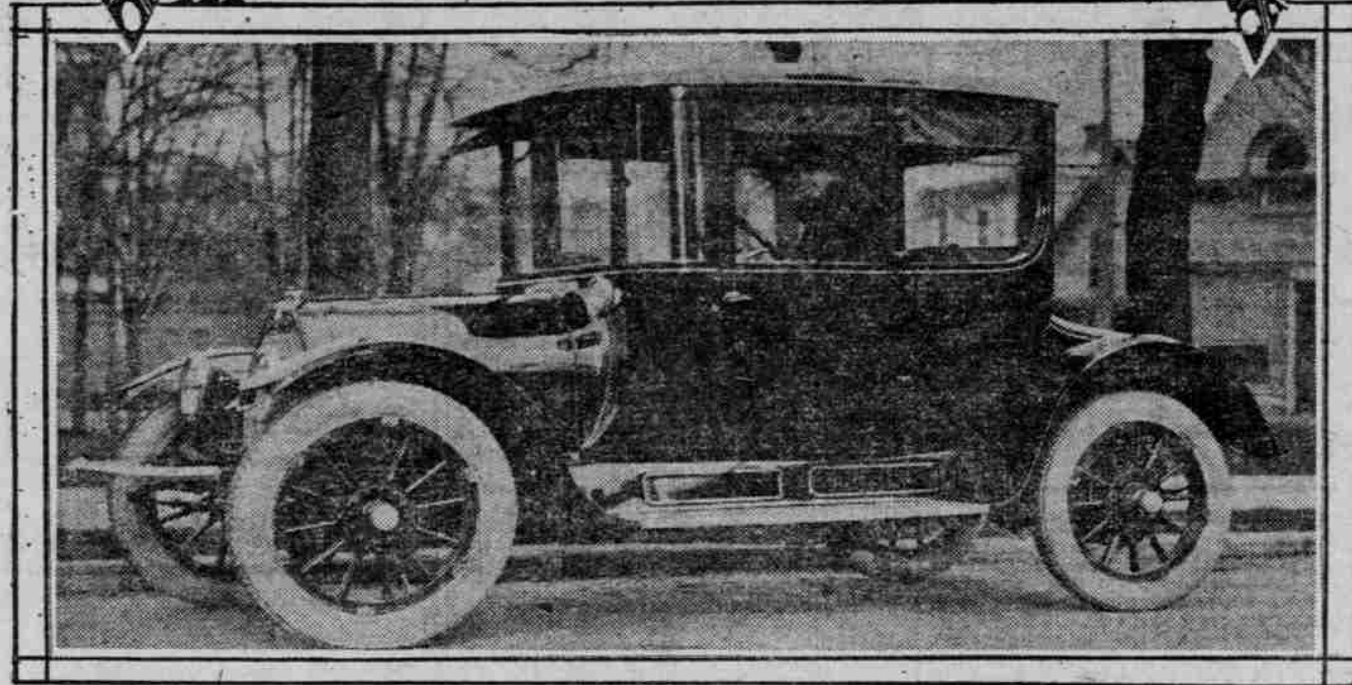
Prosperity and Companies Linked. It is strange how our people will go to hear a political spellbinder who has come to appeal for their votes.

In my opinion, the attacks on industry and prosperity, in addition to unwise legislation, are far more serious than any conditions arising from the

TWO RECENT TYPES OF CLOSED CARS WHICH ARRIVED TO BID FOR PORTLAND FAVOR.



The Studebaker Six Coupe



Overland Coupe

European war, and will last much longer.

If the railroads and industries of the United States were fully prosperous, and if we had wise laws promoting the establishment of an American merchant marine.

Improvements Increase Number of Autos Among Farmers.

AIRLIE, Or., Dec. 12.—(Special).—The roads about Airlie this winter are in better condition than during previous seasons.

Many miles of good roads now are open to the use of the farmers in nearly every part of the county.

NEW RECORD IS MADE

STOCK MAXWELL RUNS UP MOUNT WILSON IN 29 1/2.

Elevation of 6800 Feet Is Over Bad Road Nine Miles Long and Previous Time Was 42 Minutes.

The latest word of victory comes from Billy Carlson, one of the Maxwell racing team.

Mount Wilson is known the world over as a steep one, and one that is most difficult for an automobile to climb.

Over these nine miles through the snow, slush and ice, Billy Carlson forced his sturdy Maxwell, making an average of a mile every three minutes.

The Government observatory on Mount Wilson kept the official record of the race against time.

OVERLAND COUPE BEAUTY NEW MODEL IS BUILT AS IDEAL CAR FOR SOCIETY WOMAN.

Finish Is Luxuriant and Wide Body and Deep Seats Provide Comfort for Four, Including Driver.

Modern automobilism has produced another beautiful piece in the Overland coupe, which arrived in Portland during the week.

It is an ideal car for the society woman or for use as a town car.

In finish it is luxuriant and the seats are deep and the wide body allows comfortable seating for four persons.

A handy device is the automatic control of the two door sashes.

Report has just been received by a manufacturer of this country that an entire shipment of motorcycles had been commandeered at Antwerp.

NEW KING GREAT CAR

Gerlinger Company Is Agency for Eight-Cylinder Model.

ENGINE PLANT POWERFUL

Compact and Easily Reached in All Working Parts, Graceful Curves of Chassis Give Design Big Chance at Popularity.

Ed Gerlinger, of the Gerlinger Motor Car Company, announced during the week that he will handle the King Eight, the second eight-cylinder motor car to be manufactured in America.

BEAUTIFUL STUDEBAKER SIX FOR MOTORING IN WINTER.

Models That Formerly Failed to Appeal Are Rising in Popularity and Favor of Public.

The closed car is rising in popularity. This is illustrated by the many beautiful models which the manufacturers are sending out and some of which are arriving in Portland now.

Some people have no use for their motor car in the winter. It is locked up, tires removed and left to stand until the spring.

Formerly these models failed to appeal, principally because they were not as handy as the average automobile.

However, with all the controls inside the car the machines present the highest type of motor convenience.

No event in motordom has caused more interest than the little moderate-priced car which the former big makers of parts are turning out under their own name.

That the advance claims were in no way extravagant was the consensus of opinion both on the streets and among the dealers who took occasion to see the new car.

Dodge Brothers have been favorably known to the automobile trade for many years. They have manufactured the vital parts for several thousand popular cars during this period.

The establishment of a new standard in the low-priced field has been the aim of Dodge Brothers.

They have not attempted the impossible. Nor have they made claims to that effect.

They did not assert that they were building a \$5000 car that would sell for one-fifth of that sum.

Dodge Brothers' car is not a freak in any sense of the word or particular.

It is a product of the modern standard of construction and material into their product as motor cars selling for a much higher price.

The Four Dayton Riders Are Axel Kidgob, Who Made the 7000-Foot Mountain Record on Mount Hood; Bert Hedderly, Pete Irwin and Jack Tauscher.



does double duty, which allows but one practicable timing of the valves.

The inlet opens at top dead center and closes when 45 degrees past bottom dead center.

The outlet valves open 45 degrees before bottom dead center and close at top center.

The starter and generator are two separate units and to carry out the idea of balance they are placed on opposite sides of the engine.

A single cylinder air pump, with shaft connection in standard equipment.

This delivers directly to each of the three crank bearings. The thermostat system is used in cooling the car.

The car probably will be here in January. It will be shown at the New York show and those who have seen it have declared it a wonderful piece of mechanism.

The closed car is rising in popularity. This is illustrated by the many beautiful models which the manufacturers are sending out.

Some people have no use for their motor car in the winter. It is locked up, tires removed and left to stand until the spring.

Formerly these models failed to appeal, principally because they were not as handy as the average automobile.

However, with all the controls inside the car the machines present the highest type of motor convenience.

No event in motordom has caused more interest than the little moderate-priced car which the former big makers of parts are turning out under their own name.

That the advance claims were in no way extravagant was the consensus of opinion both on the streets and among the dealers who took occasion to see the new car.

Dodge Brothers have been favorably known to the automobile trade for many years. They have manufactured the vital parts for several thousand popular cars during this period.

The establishment of a new standard in the low-priced field has been the aim of Dodge Brothers.

They have not attempted the impossible. Nor have they made claims to that effect.

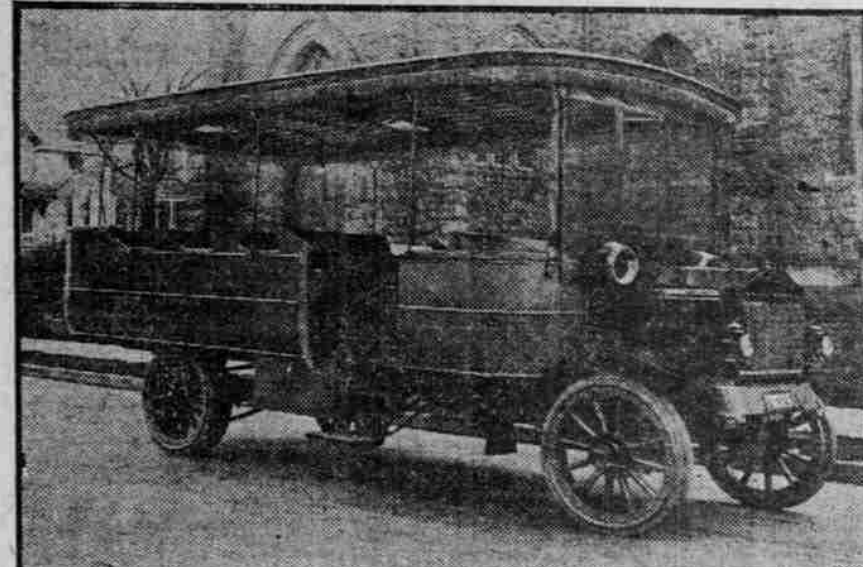
They did not assert that they were building a \$5000 car that would sell for one-fifth of that sum.

Dodge Brothers' car is not a freak in any sense of the word or particular.

It is a product of the modern standard of construction and material into their product as motor cars selling for a much higher price.

The Four Dayton Riders Are Axel Kidgob, Who Made the 7000-Foot Mountain Record on Mount Hood; Bert Hedderly, Pete Irwin and Jack Tauscher.

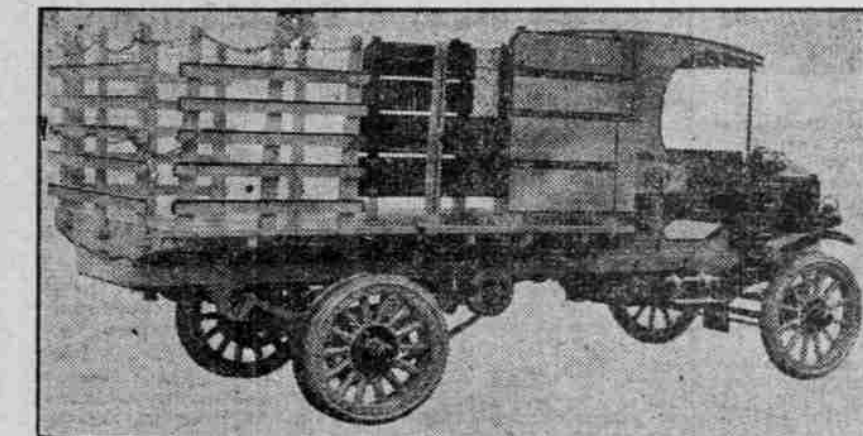
REO MOTOR BUSES



Motor Bus for country roads and Portland city streets; heated by the engine, with or without electric lights and starter.

For fuel, the truck successfully burns distillate with factory equipment, which costs only 7 cents a gallon and gives more power than gasoline.

REO MOTOR TRUCKS



This REO Two-Ton Truck Will Convince You

Other trucks of equal capacity cost more and costs more to operate, without giving you more in service or durability.

Reo's sales record for 1914 is phenomenal—Nothing in the state to compare with it this year

We have financed over seventy men here in Portland to become owners of trucks and motor buses.

Price \$1850—f. o. b. Portland \$600 down, balance \$100 per month

C. L. BOSS & CO.

Factory Distributors for Oregon and Southern Washington 615-617 Washington Portland, Oregon

DODGE CARS ATTRACT

CROWDS VISIT COVEY SHOWROOMS TO SEE EXHIBIT.

Advance Claims Are in No Wise Extravagant Is Consensus of Opinion—Low Price Will Prevail.

The Dodge Brothers' car has come and gone and those who took a chance on fighting their way through the crowd in the Covey Motor Car Company's showrooms.

No event in motordom has caused more interest than the little moderate-priced car which the former big makers of parts are turning out under their own name.

That the advance claims were in no way extravagant was the consensus of opinion both on the streets and among the dealers who took occasion to see the new car.

Dodge Brothers have been favorably known to the automobile trade for many years. They have manufactured the vital parts for several thousand popular cars during this period.

The establishment of a new standard in the low-priced field has been the aim of Dodge Brothers.

They have not attempted the impossible. Nor have they made claims to that effect.

They did not assert that they were building a \$5000 car that would sell for one-fifth of that sum.

Dodge Brothers' car is not a freak in any sense of the word or particular.

product have been thoroughly tested out by the engineers of this company for the past year and a half.

These parts are now found in other high-class machines. Dodge Brothers merely concentrated their ability towards manufacturing a machine of the best accepted standard construction at as low a cost as possible.

A unit power-plant, with cone clutch; motor, four-cylinder, cast in bloc, 3 1/2-inch bore by 4 1/2-inch stroke.

The appearance of Dodge Brothers' new machine is also very pleasing to the eye.

A beautiful streamline body, not of the exaggerated type, with plenty of room for five passengers.

The equipment is such as is seldom found in a car of this price and is conveniently arranged.

Limestone Cave Visited.

About 20 members of the Sacramento, Cal., Motorcycle Club participated in this year's run to Limestone Cave.

The equipment is such as is seldom found in a car of this price and is conveniently arranged.

You know it all just a little while before you begin to learn something.

Notice to Garages, Private Car Owners and Vulcanizers

We are always on the market to buy scrap rubber and can pay you the highest cash market prices at all-times.

J. Leve

Wholesale dealers in all grades of scrap rubber and metals. Office and metal place, 186 Columbia street.

AUTO REPAIRING

The increasing demand for expert work on ignition and electrical lighting and starting apparatus has caused us to open a department of automobile repairing.

Western Electric Works

213 Sixth Street.