

## PROGRAMME MADE FOR ELK SERVICES

William C. Bristol to Give Address at Memorial for Deceased Members.

EULOGIES TO BE SPOKEN

Ceremonies Will Be Conducted by Officers of Portland Lodge—Public to Be Admitted—Order of Exercises Announced.

William C. Bristol will deliver the principal address at the annual memorial exercises of the Portland Lodge of Elks, in the First Presbyterian Church, Twelfth and Alder streets, Sunday afternoon, December 2.

The annual eulogies on the lives of those members of the lodge who have died since the last memorial services were held will be pronounced by Ralph E. Moody, a past exalted ruler of the lodge.

Following is a list of those who have died within the year and the dates of their deaths:

Richard W. Barten, January 3; John Ecklund, January 21; S. T. Linklater, February 8; H. S. Rowe, March 20; Dan S. Kain, May 13; William Reid, May 19; S. S. Ferguson, May 20; George A. Fitch, June 5; V. C. Dunning, June 22; Charles B. Sternberg, August 26; D. F. Knap, August 26; W. W. Robinson, P. E. R., October 2; Frank J. Strubing, October 31; Mathias Foeller, October 31.

Members of the Portland lodge as well as visiting Elks will assemble in the lodge and clubrooms at 125 Sunday afternoon prior to the exercises. Headed by the lodge band they will march to the church in a body.

The services will be open to the public. Seats will be reserved for the lodge members.

The services will be conducted by the officers of the Portland lodge, who are as follows:

Exalted ruler, E. A. Marshall; esteemed leading knight, W. R. McDonald; esteemed loyal knight, Harry G. Allen; esteemed lecturing knight, Paul Chamberlain; secretary, M. R. Spaulding; treasurer, John B. Coffey; clerk, T. E. Dowling; esquire, R. L. Adams; inner guard, William A. Hart; chaplain, Albert Backus; organist, Aaron Harris; trustees, J. P. Finley, John E. Kelly and George P. Henry.

The memorial day committee in charge of the programme is J. J. Jennings, chairman; E. Jenkins, Leo Friede, C. Emil Force and Charles Ringler.

The following will be the order of exercises:

Organ, "Funeral March," Chopin; organ prelude, "In Winter," Edgar E. Courten, Kullak; quartet, "How the Day is Over," Shelley; Mrs. Jane Burns Albert, soprano; Mrs. Sara Glance Bowman, alto; Dr. R. M. Emerson, tenor; M. L. Bowman, bass; opening ritualistic exercises by Portland Lodge; recitation of "Our Absent Brothers," secretary of lodge; recitation of "Auld Lang Syne"; prayer, chaplain of lodge; violinello solo, "Andante Religioso," Thorne, Charles Duncan Ruff; address, William C. Bristol, member Portland lodge; soprano solo, "The Promise of Life," Cowen, Mrs. Jane Burns Albert; organ, Ralph E. Moody, past exalted ruler Portland lodge; duet for contralto and bass with violinello obligato, "Twilight," Nevin, Mrs. Sara Glance Bowman, M. L. Bowman, Portland lodge; Charles Duncan Ruff; closing ritualistic exercises by the lodge; quartet, "Softly and Low the Light of Day," Shackley, Mrs. Jane Burns Albert, Mrs. Sara Glance Bowman, Dr. R. M. Emerson, M. L. Bowman; doxology; benediction, chaplain of lodge; organ, "Postlude," Stearns, Edgar E. Courten.

Officers appointed will be Ben Rybke, chairman; F. Guy Haines, M. J. Hickey, J. A. Borthwick, Leo Lesner, T. J. Swivel, Harvey O'Bryan, B. B. Youmans, Felix Bloch, Alfred L. Stone, Valentine Kaiser, M. M. McMillen, Sylvan Durkin, H. T. Oviatt, Alex G. Riddell, W. L. Harris.

## LIFE SECRETS REVEALED

George Morris, Vocational Expert, to Talk at Y. M. C. A. Today.

Life secrets and vocational tendencies will be revealed at the Portland Young Men's Christian Association this afternoon, when George Morris, vocational expert, will examine the "bummer" on the heads of the men at the association's "social hour" at 2:15 o'clock.

Mrs. Morris will recite, Charles H. Barnum will sing. The theme of the meeting will be "Vocational Day" and the programme will be along lines that will interest men in school or already enlisted in business activities.

At 3:15 Robert Elmer Smith, pastor of the Sunnyside Methodist Church and ex-superintendent of the missionary work in the Hawaiian Islands, will speak on "Staying Put." The Warren sisters quartet will sing.

At the fellowship supper at 5:20 o'clock, J. W. Cressley, said to have the only collection of autographed photographs of John D. Rockefeller, President of the United States and other public men since Garfield's Administration, will speak.

## SECRETARY JOB POPULAR

Competition for Aides to Commissioners Promises to Be Keen.

Competition in the examination to be held December 8 for private secretaries to City Commissioners, will be keen, judging from the number of persons who have filed notice with the Municipal Civil Service Board of intention to compete for the positions.

The examination will feature an oral test to determine personal fitness of the applicants for the positions. This will have a weight of 50 points out of 100.

Those who have filed notices are: Henry C. Edwards, C. E. Atlas, Letta M. Donnelly, Luther A. Hammersly, Victor Oliver, Matilda C. Petersen, Margaret White, Monroe Goldstein, Mrs. Nettie B. Rhoades, Edwin A. Kent, C. W. Wardle, James P. McCorkle, Marcus F. McManus and James McCool.

## MULTNOMAH HEARS TALK

Dr. W. C. Adams Lectures at Suburb on Care of Teeth and Mouth.

Dr. W. C. Adams, chairman of the educational committee of the Portland District Dental Society, gave an illustrated lecture at Multnomah, on the electric railway, Tuesday, to a large audience of mothers and fathers on the care of the teeth and mouth. Pictures were shown as furnished by the National Dental Society along educational lines, showing the work done in the schools of Andover and Cleveland, O., and also pictures were shown of the "tooth brush drill" as given

in the Buckman School. Dr. Adams explained these pictures in detail, and especially emphasized the work that has been started in the Buckman School. Many questions were asked and answered concerning the work of the education department of the society Dr. Adams represented.

The society will introduce next Tuesday the "tooth brush drill" at the deaf department of the Buckman School the same as in the other rooms. An auxiliary to the National Dental Education Society has been organized in Portland, which gives additional facilities for the Portland society in its campaign of education.

## BROOKLYN CLUB AIDS POOR

Parent-Teachers' Association Plans to Relieve Winter Suffering.

Relief of needy families in the Brooklyn district was the principal business transacted at the meeting of the Brooklyn Parent-Teacher Association Wednesday afternoon.

A subscription was taken and money raised to purchase a load of wood for a destitute family. Donations of food and clothing were made and placed in baskets for distribution to families in need. Mrs. Frank C. Forbes, the president, announced the following chairmen of working committees for the ensuing year: Philanthropic, Mrs. Thomas S. Lake; civic, Mrs. Charles B. Methuen; visiting, Mrs. F. C. Fall; Mrs. Forbes.

## PROMINENT PORTLAND ELKS WHO WILL SPEAK AT ANNUAL MEMORIAL SERVICES OF LODGE NEXT SUNDAY.



W. C. Bristol



R. E. Moody

appointed a special committee to sell Red Cross seals in Portland stores and hotels December 13.

After the business Rev. Perry J. Green, of the New Thought Temple, delivered a short address on "Appreciation," in which he commented the philanthropic policy of the club. Miss Ethel Luke gave a solo. This was followed by a social hour. The members laid plans to relieve cases of need in the neighborhood, and after the club adjourned several families received assistance.

## TONG WAR MAY RESUME

Truce Held Unsatisfactory and Outbreak Expected at Blaine.

The next outbreak of the tong war is expected at Blaine, Wash., where several thousand Chinese are employed in the canneries. In the larger cities, it is pointed out, the police are too strong to allow the Chinese to carry on their wars undisturbed.

"My clients acknowledge that they were defeated," said Dan Powers, attorney for the Hop Sing, "but they are openly dissatisfied with the truce. On the other hand, the members of the Suey Sing tong are so elated with their victory that they refuse to speak to a Hop Sing. The Hop Sing are the oldest, largest and wealthiest tong on the Coast, and they are not inclined to accept their defeat with resignation. However, I do not look for a new outbreak in Portland."

Officers appointed will be Ben Rybke, chairman; F. Guy Haines, M. J. Hickey, J. A. Borthwick, Leo Lesner, T. J. Swivel, Harvey O'Bryan, B. B. Youmans, Felix Bloch, Alfred L. Stone, Valentine Kaiser, M. M. McMillen, Sylvan Durkin, H. T. Oviatt, Alex G. Riddell, W. L. Harris.

## Tillamook Court Installed.

M. J. Malloy, state chief ranger of the Catholic Order of Foresters, has returned to Portland from Tillamook, where he went with a degree team to install the Sacred Heart Court of the order last Sunday. Forty members were installed and the following officers were elected: Spiritual director, Rev. F. Van Clarenbeck; chief ranger, Henry Plasker; vice-chief ranger, John Kerchoff; past chief ranger, Frank Fitzpatrick; speaker, Ford V. Shaw; recording secretary, Joseph Delman; assistant secretary, Joseph Dorner; trustee, Herman Sanders, Bernard Jacobs and A. Bern.

## WOMEN OF GERMAN RED CROSS AUXILIARY TO HOLD ENTERTAINMENT AND SALE FOR BENEFIT OF CHARITY.



Mrs. Theresa Abendroth, President Women's Auxiliary German Red Cross

An interesting feature of the bazaar to be held December 4 and 5 in Deutsches Haus, under the auspices of the women's auxiliary of the German Red Cross Society, will be the program me that will be presented Friday evening and Saturday afternoon and evening. The choir of St. Paul's German Church will furnish several numbers on the opening night. G. Haselham is director and Mrs. Cornelia Barker Car will be violinist. Fancy dancing by the Yama Yama girls and a bogie man a will make their appearance. Among those participating will be Lenore Blasling, Eunice Cowdell, Laura Shay, Jean McDonald, Gladys Ramsey, Dorothy Logan, Roger Shay, Marjorie Leet and others.

The Arion Philharmonic Society will give a programme on Saturday night. Miss Gertrude Hoerber will play violin solos and Portland Social Turn Verein girls will give an exhibition of exercises as and drill.

## GIFT BOOKS LISTED

Library Suggests Suitable Christmas Presents.

## CHILDREN'S WANTS TOLD

Students Writing Essays Invited to Consult Articles on File—New Statement on Latin-American Trade Received.

Good books are always welcome Christmas gifts. Buy early, so that you can make a choice. Suggestions of books for adults may be found in the circulation department of the Central Library. Lists of books suitable for the members of your family, whatever their varied interests may be—for the mother, the educator, the business man, the child, the teacher, the philosopher,

may be had for the asking, and these lists give publisher and price.

The annual exhibit of books for children has been installed in the children's department. Miss Millard will be glad to give the benefit of her experience to those who want advice.

Copies of the report of the fourth annual convention of the Drama League of America may be obtained at the information desk.

Civics students who are writing essays on "Greater Portland" may learn at this desk of the conditions of the competition and can consult lists of books and articles or meetings at the library after 2 P. M. Call A 6579 or Main 1557-K, the information desk. Scarcely an evening passes without a gathering of some interest.

An interesting automobile engine, specially designed for exhibition purposes, showing the construction and operation of the automobile, has been lent to the technical department by the Ford Manufacturing Company, and is on exhibition in the technical room.

A new statement in the Latin-American trade situation, issued by the United States Foreign and Domestic Commerce Bureau, has just been received in the reference department. The daily consular reports, which can be obtained only by subscription, are also on file in this room. The new report of the War Department on terminal facilities of the United States may be found in this department.

A few more of the prices which are exceedingly interesting to pianists and home owners. Space will not permit us to list all of the makes and prices, but we want to say that the \$200, \$300 and \$500 pianos, all new ones, are now on sale for \$98, \$113 and \$145. The new player pianos, \$500 values, \$285; smaller sized, plain cases, \$245.

Many other slightly used Pianos, all with the most modern style attachments, on sale \$350 \$337 \$285 \$300 Largest size Fletcher Upright, walnut, \$165 \$325 Another Mahogany \$135 \$300 Stock Pianos, beautiful mahogany, new, the best and most expensive ever built by Weber \$498

Many other slightly used Pianos, all with the most modern style attachments, on sale \$350 \$337 \$285 \$300 Largest size Fletcher Upright, walnut, \$165 \$325 Another Mahogany \$135 \$300 Stock Pianos, beautiful mahogany, new, the best and most expensive ever built by Weber \$498

Many other slightly used Pianos, all with the most modern style attachments, on sale \$350 \$337 \$285 \$300 Largest size Fletcher Upright, walnut, \$165 \$325 Another Mahogany \$135 \$300 Stock Pianos, beautiful mahogany, new, the best and most expensive ever built by Weber \$498

Many other slightly used Pianos, all with the most modern style attachments, on sale \$350 \$337 \$285 \$300 Largest size Fletcher Upright, walnut, \$165 \$325 Another Mahogany \$135 \$300 Stock Pianos, beautiful mahogany, new, the best and most expensive ever built by Weber \$498

Many other slightly used Pianos, all with the most modern style attachments, on sale \$350 \$337 \$285 \$300 Largest size Fletcher Upright, walnut, \$165 \$325 Another Mahogany \$135 \$300 Stock Pianos, beautiful mahogany, new, the best and most expensive ever built by Weber \$498

Many other slightly used Pianos, all with the most modern style attachments, on sale \$350 \$337 \$285 \$300 Largest size Fletcher Upright, walnut, \$165 \$325 Another Mahogany \$135 \$300 Stock Pianos, beautiful mahogany, new, the best and most expensive ever built by Weber \$498

Many other slightly used Pianos, all with the most modern style attachments, on sale \$350 \$337 \$285 \$300 Largest size Fletcher Upright, walnut, \$165 \$325 Another Mahogany \$135 \$300 Stock Pianos, beautiful mahogany, new, the best and most expensive ever built by Weber \$498

Many other slightly used Pianos, all with the most modern style attachments, on sale \$350 \$337 \$285 \$300 Largest size Fletcher Upright, walnut, \$165 \$325 Another Mahogany \$135 \$300 Stock Pianos, beautiful mahogany, new, the best and most expensive ever built by Weber \$498

Many other slightly used Pianos, all with the most modern style attachments, on sale \$350 \$337 \$285 \$300 Largest size Fletcher Upright, walnut, \$165 \$325 Another Mahogany \$135 \$300 Stock Pianos, beautiful mahogany, new, the best and most expensive ever built by Weber \$498

Many other slightly used Pianos, all with the most modern style attachments, on sale \$350 \$337 \$285 \$300 Largest size Fletcher Upright, walnut, \$165 \$325 Another Mahogany \$135 \$300 Stock Pianos, beautiful mahogany, new, the best and most expensive ever built by Weber \$498

Many other slightly used Pianos, all with the most modern style attachments, on sale \$350 \$337 \$285 \$300 Largest size Fletcher Upright, walnut, \$165 \$325 Another Mahogany \$135 \$300 Stock Pianos, beautiful mahogany, new, the best and most expensive ever built by Weber \$498

Many other slightly used Pianos, all with the most modern style attachments, on sale \$350 \$337 \$285 \$300 Largest size Fletcher Upright, walnut, \$165 \$325 Another Mahogany \$135 \$300 Stock Pianos, beautiful mahogany, new, the best and most expensive ever built by Weber \$498

Many other slightly used Pianos, all with the most modern style attachments, on sale \$350 \$337 \$285 \$300 Largest size Fletcher Upright, walnut, \$165 \$325 Another Mahogany \$135 \$300 Stock Pianos, beautiful mahogany, new, the best and most expensive ever built by Weber \$498

Many other slightly used Pianos, all with the most modern style attachments, on sale \$350 \$337 \$285 \$300 Largest size Fletcher Upright, walnut, \$165 \$325 Another Mahogany \$135 \$300 Stock Pianos, beautiful mahogany, new, the best and most expensive ever built by Weber \$498

Many other slightly used Pianos, all with the most modern style attachments, on sale \$350 \$337 \$285 \$300 Largest size Fletcher Upright, walnut, \$165 \$325 Another Mahogany \$135 \$300 Stock Pianos, beautiful mahogany, new, the best and most expensive ever built by Weber \$498

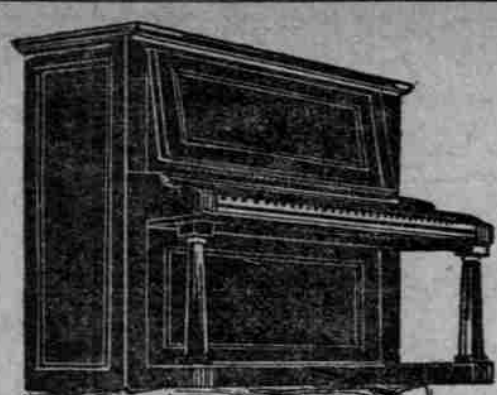
Many other slightly used Pianos, all with the most modern style attachments, on sale \$350 \$337 \$285 \$300 Largest size Fletcher Upright, walnut, \$165 \$325 Another Mahogany \$135 \$300 Stock Pianos, beautiful mahogany, new, the best and most expensive ever built by Weber \$498

Many other slightly used Pianos, all with the most modern style attachments, on sale \$350 \$337 \$285 \$300 Largest size Fletcher Upright, walnut, \$165 \$325 Another Mahogany \$135 \$300 Stock Pianos, beautiful mahogany, new, the best and most expensive ever built by Weber \$498

Many other slightly used Pianos, all with the most modern style attachments, on sale \$350 \$337 \$285 \$300 Largest size Fletcher Upright, walnut, \$165 \$325 Another Mahogany \$135 \$300 Stock Pianos, beautiful mahogany, new, the best and most expensive ever built by Weber \$498

Many other slightly used Pianos, all with the most modern style attachments, on sale \$350 \$337 \$285 \$300 Largest size Fletcher Upright, walnut, \$165 \$325 Another Mahogany \$135 \$300 Stock Pianos, beautiful mahogany, new, the best and most expensive ever built by Weber \$498

Many other slightly used Pianos, all with the most modern style attachments, on sale \$350 \$337 \$285 \$300 Largest size Fletcher Upright, walnut, \$165 \$325 Another Mahogany \$135 \$300 Stock Pianos, beautiful mahogany, new, the best and most expensive ever built by Weber \$498



WE ARE proud of the piano values we are offering to pianoless

homes in Portland and vicinity. We are proud of our record for September and October. Think of it—in one single month, October, in only one of our stores, Portland, Broadway at Alder, Eilers Building, we sold

over \$86,000.00 worth of pianos, player pianos and baby grand pianos, many autopian baby grand player pianos included. We have published the complete list several times. November's record will be far ahead of October. It is ahead of October now and one more day left in this month, Monday, November 30. It will be the biggest day we have had, for it is nearing on to the last call of the great sale. It is the manufacturers who are making the prices. The Manufacturers' Representatives, Ellsworth, Barnes & Davey, are now in charge. This Manufacturers' Emergency and Surplus Sale, combined with the slaughter of the costliest makes from the Soule Bros.' failure stock, which was ordered sold and was sold by order of the Court, are now in the hands of the manufacturers' representatives. Prices that were never before equalled. Terms that were never before heard of. Our agreement is that we buy three surplus pianos every time the manufacturers' representatives sell two. They can well afford to make exceptional discounts. They do not care for profit if they can get actual cost or even below cost prices for the two they sell now; the three pianos for future delivery keeps the wheels of the big factories moving. This is the greatest piano buying event ever announced on the Pacific Coast and hundreds of homes are taking advantage of the exceptional prices. If you expect to own a piano within the next ten years you should see the pianos herein advertised.



Open in the evening until 10 o'clock

Eilers Bldg., Broadway at Alder  
Phone Main 6655 for our Automobile, Home A 2350



\$525

Hardman

\$188



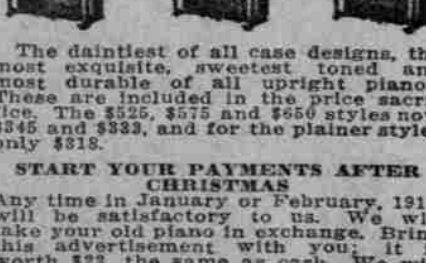
\$437



\$488



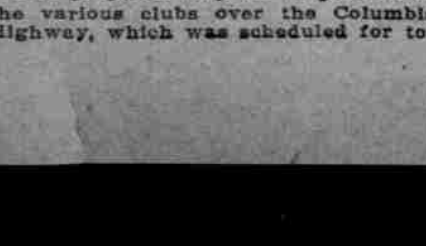
\$488



\$225



\$225



\$225



Tomorrow Only

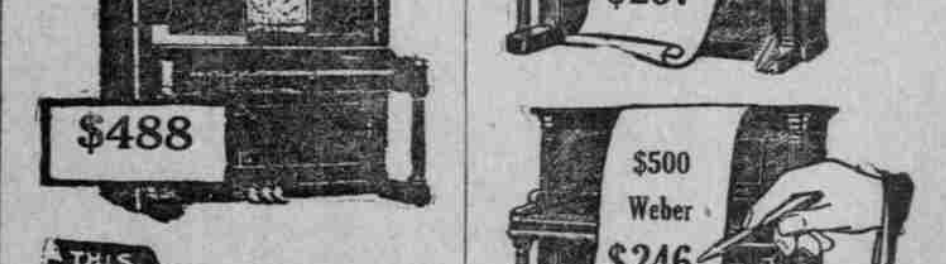
To the first person who calls tomorrow, bringing this ad with them, we will sell that \$525 Hardman Piano for \$188. We make this offer to test the value of Sunday advertising in this paper. Remember, tomorrow—Monday—only.



\$976



\$487



\$237



\$246



\$246



\$246

Among others, the old reliable makes, many of them never before advertised at special sale prices. Remember, during this sale we are not governed in any way by attempted manufacturers' price restrictions. We are cutting the prices on every piano in the house.

Eilers, of Course

Highway. At Gordon Falls a campfire lunch was to be served. The same programme will be the order when the postponed trip is taken.

The Kansas State Agricultural College has a campaign on for enlisting 20,000 Kansas boys and girls in agricultural and home-making contests this year. A special state organizer has been appointed.

Room B. of the Central Library on "The Divine Comedy; a Summary of Medievalism."

Dr. C. H. Chapman will deliver his next lecture in the course on "Current History" Thursday evening, December 3, at 8 o'clock, in Library Hall. His subject will be "The New Religion." The lectures are free.

## ROAD TRIP IS POSTPONED

Inspection of Columbia Highway by Clubs Awaits Better Weather.

The proposed trip of inspection of the various clubs over the Columbia Highway, which was scheduled for today, has been postponed until a later date because of the heavy winds and rains in the mountains.

The road enthusiasts were scheduled to leave at 7:50 A. M. today over the O-W. R. & N. in a special car. This car was to be sidetracked at Onesta Gorge, whence it was planned for the party to walk two and one-half miles to Gordon Falls over the Columbia

day, has been postponed until a later date because of the heavy winds and rains in the mountains.

The road enthusiasts were scheduled to leave at 7:50 A. M. today over the O-W. R. & N. in a special car. This car was to be sidetracked at Onesta Gorge, whence it was planned for the party to walk two and one-half miles to Gordon Falls over the Columbia

day, has been postponed until a later date because of the heavy winds and rains in the mountains.

The road enthusiasts were scheduled to leave at 7:50 A. M. today over the O-W. R. & N. in a special car. This car was to be sidetracked at Onesta Gorge, whence it was planned for the party to walk two and one-half miles to Gordon Falls over the Columbia