

JAMES J. HILL

Knew That the **KEY** to Cheap Freight Rates for a Territory of 1,200,000 Square Miles Was at

FLAVEL

Where He is Now Building Mammoth Docks and Terminal Yards to Accommodate the Great Northern, Northern Pacific and S. P. & S. with an Additional Expenditure of \$5,000,000 for Two of the Finest Steamships in the United States to Ply Between FLAVEL and SAN FRANCISCO

With Far Less **PORTLAND, TACOMA and SEATTLE** Made Many a Man Comfortable for Life on a Small Investment

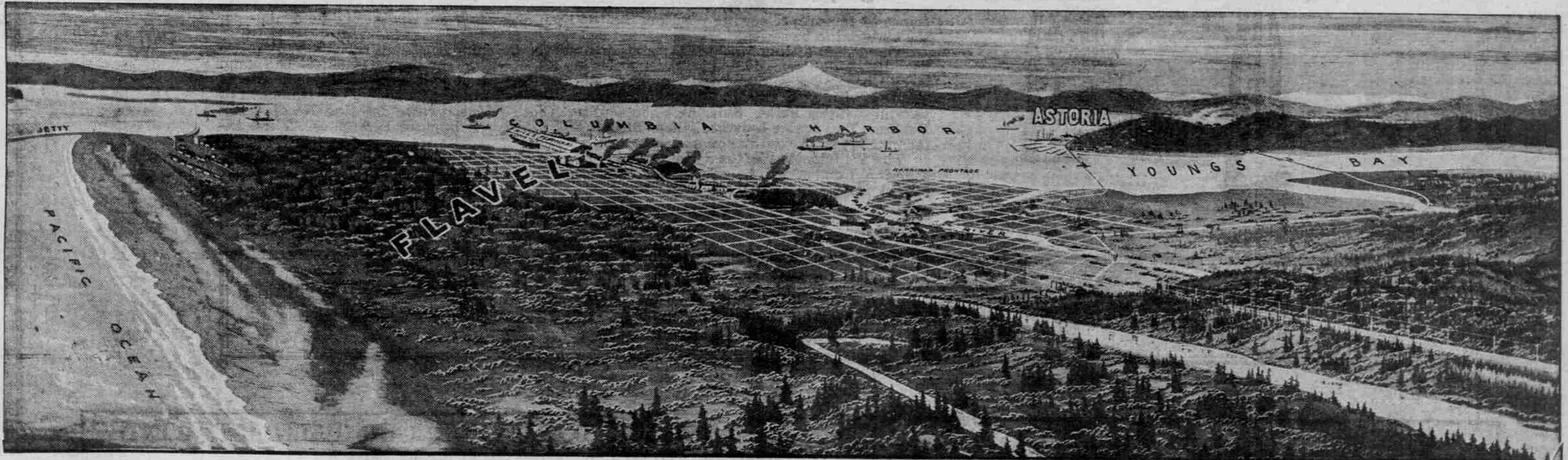
FLAVEL

BEING THE MOST STRATEGICAL POINT ON THE PACIFIC COAST, DEMANDS LARGE IMPROVEMENTS FROM THE START, AS THE VAST TONNAGE THAT WILL ACCRUE WITH THE UTILIZATION OF FLAVEL WILL BE BIG. READ IN THE FOLLOWING THE STATEMENTS OF LOUIS W. HILL, PRESIDENT GREAT NORTHERN, AND WILLIAM P. CLOUGH, CHAIRMAN OF THE BOARD OF DIRECTORS OF THE NORTHERN PACIFIC. ONE SPEAKS OF TONNAGE, THE OTHER REFERS TO PASSENGER TRAFFIC. WE THINK THESE STATEMENTS BY SUCH MEN SET THE STAMP OF APPROVAL UPON THE EXPECTED GROWTH OF FLAVEL.

Louis W. Hill, president of the Great Northern, standing on the ground at Flavel where the Hill terminals are now being built, said: "This is undoubtedly the place from which the grain shipments of the great Columbia River Basin will be made; you have the situation here unquestionably."

FLAVEL, OREGON
The Hub of the Columbia Harbor

William P. Clough, chairman of the board of directors of the Northern Pacific, made the statement that train schedules of the Great Northern, Northern Pacific and allied lines will be arranged throughout the Northwest so that passengers leaving Puget Sound, Spokane, the interior or Eugene in the morning will be able to reach FLAVEL by evening, there to embark on the great steamers of the Hill interests when they are put into operation and reach San Francisco the next evening. We decided that this district merited recognition and a quick and easy way to travel between here and San Francisco.



FREE FACTORY SITES

WE WILL GIVE TO THE MAN WHO WILL ESTABLISH

PAY-ROLL INDUSTRIES

A SITE FREE ADJOINING THE HILL DOCKS AND TERMINAL YARDS. WRITE US ABOUT THEM.

Direct Boat Line

FROM FLAVEL TO ASTORIA STARTS Oct. 19 MAKING CONNECTIONS AT ASTORIA WITH ALL TRAINS AND BOATS FROM PORTLAND.

Do You Wonder That the Shipping World Is Eyeing FLAVEL?

Since starting our sale, October 5th, we are getting inquiries from all parts of the Pacific Northwest for prices, plats and general information, stating they are pleased to see the FLAVEL townsite go on the market.

WE EXPECTED IT

As the people of the whole Columbia River Basin realize what the utilization of the Columbia Harbor means to the producer and business man in the saving of freight rates, and with the exceptional inducement the FLAVEL townsite is giving in setting aside 22 blocks of property adjoining the Hill docks and terminal yards for free factory sites, it makes a combination that builds hamlets into cities in a very short time. To anticipate moves of such character as this is to place yourself in the way to make a fortune in one good investment. The great interests have everything to gain and nothing to lose by the moves above portrayed and are accomplishing them as fast as time, money and brains can construct them. There is no chance that they will not do these things. To buy FLAVEL property is to make sure of your enjoying the vast increase in values that will come with the establishment of this port. Not to do so is to lose an opportunity that will not present itself again in a lifetime in all probability. Values of city realty are not determined by their productive capacity, but by the aggregate population about that point. There is everything to assure that there will be a great maritime city built at FLAVEL and if you would realize on this condition, now is the time to invest as the prices on this property are much lower than other harbors now bidding for notice and development.

PRICES \$250 to \$500 Lots—\$50 Down and \$10 Per Month
\$850 Lots—\$150 Down and \$20 Per Month

Warrenton-Astoria Townsite Co. (Inc.)

Astoria Office
422 Commercial St.
Phone Main 583
CHAS. DODGE
ASTORIA, OREGON

PORTLAND, OREGON
MAIN OFFICE
201 Northwest Bldg., Cor. 6th and Washington
PHONE MAIN 2675
DAVID DODGE

Flavel Office
Flavel Hotel
C. M. Hemphill
Flavel, Oregon

20% DISCOUNT FOR CASH

IF YOU WILL BUILD WITHIN 60 DAYS

WRITE US TODAY FOR LITERATURE ON FLAVEL.

10% DISCOUNT ON CONTRACT SALES

IF YOU WILL BUILD WITHIN 60 DAYS.

WHEN GOING TO OUR CITY STOP AT THE

FLAVEL HOTEL

C. T. BELCHER, MGR.
ONE OF THE FINEST HOTELS IN THE NORTHWEST.