

REGISTRATION FOR STATE IS 179,716

Estimate Is That Total Will Not Exceed 200,000, Only 40,000 More Than 1912.

BLAME LAID TO RED TAPE

Frequency of Elections Said to Play Part in Keeping Many From Polls - Republicans Enrolled 70 Per Cent.

SALEM, Or., April 25.—(Special).—Secretary of State Elliott announced today that the total registration as reported to him by the County Clerks was 179,716. There are only four days remaining on which to register for the primary, and unless there is a big increase on these days, the total will not be more than 200,000, or about 40,000 more than it was in 1912, when the women were not entitled to vote and the population of the state was considerably smaller.

It is the belief of persons here who have made a study of conditions, and who thought when the women were enfranchised that the vote would be almost doubled, that the apathy is largely due to the frequency of elections. They say the people have not only tired of going to the polls every six months or so to cast their ballots, but they are tired of the red tape of registration, and that not until conditions are remedied will a great proportion of the people exercise the right of franchise.

The registration, as reported to the Secretary of State, is divided among the parties as follows: Republican, 126,886; Democratic, 47,018; Progressive, 8,510; Prohibition, 8,545; Socialist, 4,935; and miscellaneous, 704.

Table showing registration statistics by county, including columns for County, Total, Rep., Dem., Prog., Pro., and Misc.

TILLAMOOK, Or., April 25.—(Special).—The registration in Tillamook County has been increased to 18,654, there being quite a number of women who registered as Republicans.

Table showing registration statistics for Tillamook County, including columns for Party, Men, Women, and Total.

LIBBY MINERS ARE OUT

STRIKERS SAY COMPANY REFUSED TO CREDIT ENTIRE OUTPUT. Coarse Screen Gave Concern 800 Tons of 'Velvet' in Month, is Allegation of Workmen Who Quit.

MARSHFIELD, Or., April 25.—(Special).—A strike of coal miners has been on at the Libby mine, three and a half miles from Marshfield, for three weeks. Forty men quit work when the manager, George Doll, refused to accede to their demands to put in a screen with one-eighth of an inch mesh.

The miners say they were being treated unfairly with the old method of screening. The screen was two inches wide in places and the miners lost much coal which should have been credited to them. The strikers say all the coal which goes through the screen is sold by the mine operator and that this "velvet" amounted to 800 tons in March.

There has been no violence and the miners have contented themselves with a simple warning to outsiders to stay away from the Libby mine, owing to the strike.

DRAMA LEAGUE ANSWERS

Portland Chapter Notes Effect of Work Here Already. PORTLAND, April 25.—(To the Editor).—In the Oregonian recently Leone Cass Baer says that the mine attendance on the opening night of the Stratford Players "bespeaks more for the vitality of true dramatic appreciation in Portland than the Drama League can ever feel responsible for."

This is perfectly true and it is the organizing into working units that the "true dramatic appreciation" that the Drama League hopes to assist.

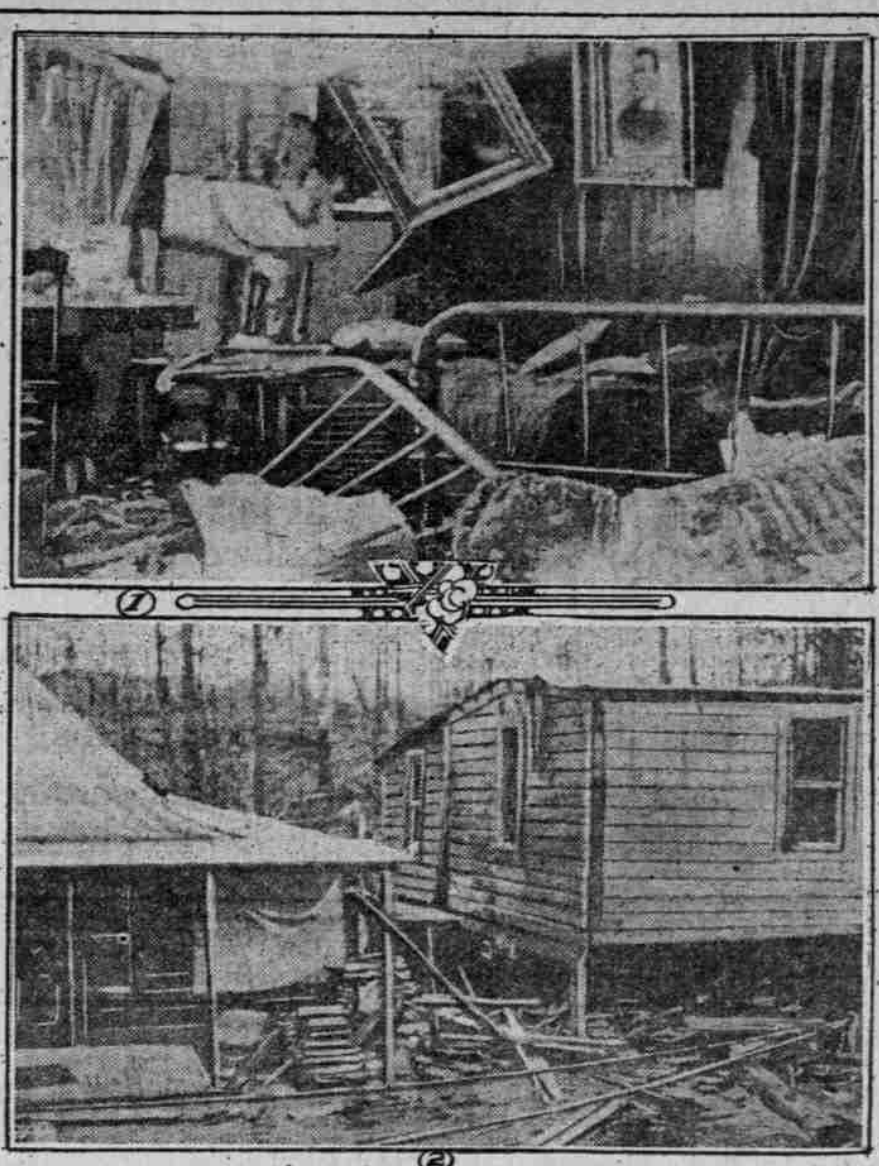
Every man, woman and child who has this interest in good drama is invited to join the league and help. We hope to become as strong as an organized public sentiment that the New York booking office will find it good business to send us the best plays and the best players.

STRIKE ON AT ASTORIA

Shopmen Ordered Out at Brewery by Portland Union. ASTORIA, Or., April 25.—(Special).—A shop strike was called today at the plant of the North Pacific Brewery. All employees were ordered out by the Portland union, of which they are members.

The cause of the strike is the storing of the beer in a Portland cold storage plant which is not satisfactory to the Engineers' Union.

SCENE OF ATTEMPTED MURDER OF FAMILY AT SCAPPOOSE



—BEDROOM WRECKED BY EXPLOSION. 2.—TENTHOUSE OCCUPIED BY THE GILMORE FAMILY.

GILMORE ASKS AID

Logger Fears Attempts on His Life Will Be Continued.

NEIGHBORS MOVE AWAY

As Powder Is Used Constantly and Access to It Easy, Sheriff Is Asked to Put Men in Camp to Apprehend Guilty Ones.

ST. HELENS, Or., April 25.—(Special).—J. A. Gilmore, superintendent of the Nehalem Timber & Logging Company's camp of this county, whose house was dynamited last week, was in St. Helens today to urge the Sheriff and District Attorney to protect him from further attempts on his life.

Mrs. Gilmore, who was seriously injured by the explosion, is still in the hospital at anvil and her condition is serious.

Mr. Gilmore says there is a feeling of enmity in camp on the part of some of the employees due to the reduction of wages and the discharge of some, and though Mr. Gilmore has acted on orders from the company the laborers think he is responsible.

Mr. Gilmore says that the persons who have now three times attempted to injure him and his family are employed still and that by placing secret guards about the camp they could be discovered.

So great is the fear on the part of others in the camp that further attempts will be made on Mr. Gilmore that all the people living in houses near his have moved. When he returned to camp Monday morning he found that some of his neighbors were living within a half mile of his tent-house.

When asked if he had any powder men in his camp he stated there were several and that the powder was open to all as they were working with dynamite constantly and it was necessary to send nearly every man at times for supplies of powder.

HIGHWAY BIDS ARE ASKED

Columbia County Preparing to Build River Drive. ST. HELENS, Or., April 25.—(Special).—The Columbia County Court has advertised May 6 for opening bids for

the construction of the Columbia Highway in Columbia County. Bids are to be received for the main road from the Clatsop County line to Tide Creek, near Deer Island. This covers about 40 miles of the north part of the county.

The road is divided into sections and bids may be entered for the whole or any section thereof. Bids for the construction of the remainder of the main road and the laterals will be asked for soon.

NEW IDAHO ROAD PLANNED

Lewiston Committee Starts Campaign for Link to Two Highways. LEWISTON, Idaho, April 25.—(Special).—The good roads committee of the Commercial Club has launched a campaign for building permanent highway up the Lewiston hill as the link to connect the Walla Walla-Clarkston state highway with the Palouse state highway, which leads to Spokane.

The Board of County Commissioners of Nespeque County have directed County Engineer Booth to make a survey for the road, and it is reported construction will start soon.

This action is the result of requests from citizens of Washington that steps be taken for the construction of this road.

SHEEP ARE ON DECREASE

25,000,000-Pound Reduction in Wool Clip in Five States Seen. LEWISTON, Idaho, April 25.—(Special).—According to an estimate prepared by the National Wool Warehouse & Storage Company, copies of which have been received here, sheep in Idaho have decreased numerically 10 per cent in the last two years. An even larger decrease is shown for some of the other intermountain states.

The figures are as follows: Idaho, 10 per cent; Montana, 40 per cent; Wyoming, 20 per cent; Utah, 15 per cent; Oregon, 10 per cent.

It is estimated that there will be a decrease of 25,000,000 pounds in the 1914 wool clip of the five states.

HALL ASSOCIATION INCORPORATED.

ASTORIA, Or., April 25.—(Special).—Articles of incorporation of Union Hall Association of Knappa, were filed in the County Clerk's office today. The association is described as a benevolent, literary and educational society. The incorporators, who are also trustees, are Jacob Sture, August Sture and D. A. McGinnis.

POISON OAK! IVY!

Instant relief in Sensitive Skin. Soothing and Cooling. "Bottled Comfort" for the skin. All druggists. 50c.—Adv.

GREATER ASTORIA LIVE WIRES ARE MAKING HISTORY AT THE MOUTH OF THE COLUMBIA



Front Row, Right to Left—Fred J. Johnson, Vice-President Port of Columbia Commercial Club; Manager Strubel; President Kinney; W. A. Sherman, President Astoria Chamber of Commerce; Back of Mr. Sherman, Brennan Van Dusen, Mrs. Owens-Adair; Back of Mrs. Owens-Adair, E. M. Cherry, Secretary Port of Columbia Commercial Club; G. B. Johnson, Board of Governors Port of Columbia Commercial Club; G. Clifford Barlow, President Wagonport Development League; Arthur J. Dayton, Financial Secretary Port of Columbia Commercial Club. ASTORIA, Or., April 25.—(Special).—Development of the lower Columbia River from St. Helens to its mouth is the object of the recently organized Port of Columbia Commercial Club and already the officers of the organization have started systematic work.

THESE MAGNIFICENT RESIDENCES TO BE SOLD AT AUCTION

on Friday Next at 10:30 A. M. at 862 and 864 Marshall Street Corner 26th. Liberal Terms Two Beautiful Semi-Detached Homes. For Inspection of said Property Apply to Auctioneer.



Each house contains ten rooms, viz.: Two bathrooms tiled, reception hall, living-room, library, dining-room, billiard-room, five bedrooms, sun porches, all hardwood floors, solid mahogany woodwork, plate-glass windows and doors, steam-heated, also garage, brick construction.

IN THESE TWO IDEALLY MAGNIFICENT HOMES you will find your own ideas and desires anticipated to an extent far beyond what you have dreamed possible. If this whole page were filled with the most detailed and minute description of these homes in the words of the keenest word painter there would still be lacking that exquisite satisfaction which you may experience only from a personal inspection. J. T. WILSON, Auctioneer.

OVATION GIVEN BOOTH

CANDIDATE FOR SENATE IS WELCOMED IN LINCOLN. Republican Pleased With Prospects After Campaign-Trip to Eastern Oregon Planned for This Week.

EUGENE, Or., April 25.—(Special).—Satisfied with the results of his visit to Robert A. Booth, candidate for the Republican nomination for United States Senator, returned to his home here this afternoon after campaigning for two days in Lincoln County.

Mr. Booth reports that he was given a splendid reception at both Toledo and Newport as well as at Lebanon, Brownsville and Halsay, in Linn County, which he visited before returning to Eugene.

He intends to go to Portland Monday and from that city cover Clackamas and the lower Columbia River counties and as much of Eastern Oregon as possible before the primary.

Mr. Booth reports that he was given a special delegation and was met by a special delegation and was met by a special delegation and was met by a special delegation.

WINLOCK LEPER ISOLATED

Chris Katajista Is Taken to Diamond Head Quarantine Station. WINLOCK, Wash., April 25.—(Special).—Chris Katajista, the Winlock leper, was taken to Diamond Head quarantine station today by county officials. He was taken in an automobile to Tacoma, where he was transferred to a launch.

About 60 days ago it was discovered that Katajista was afflicted. The county officials had no funds for the care of such patients, and Government officials at Washington ordered his removal to the Government station.

STREET PAVING STARTED

Fifty Men Are Now at Work Building Sidewalks at Woodland. WOODLAND, Wash., April 25.—(Special).—The contractors who have the job of paving the main business streets with concrete paving have begun work in earnest and now have everything

CLUB DESCRIBES LANDS

Silver Lake Body Issues Statement on Area to Be Opened. SILVER LAKE, Or., April 25.—(Special).—The Silver Lake Commercial Club has issued a statement on the value and character of the land to be thrown open June 9 in the Deschutes and Paulina National forests. In part, it says:

The land comprises about 70,000 acres, practically surrounding Silver Lake. It is composed of a rich, sandy loam, covered with sage-brush and scattering juniper. We do not want it understood that all of this 70,000 acres is tillable land, but about 35,000 acres is of this character.

Water is abundant, and the snow rarely falls to over a depth of 12 inches except in the mountains where it falls from three to five feet. The thermometer during the past winter was never below zero.

FRIENDS AID MRS. ROSS

New Household Articles Given to Nightriders' Victim. ABERDEEN, Wash., April 25.—(Special).—Friends of Mrs. Margaret M. Ross, whose home with its contents on the North River was recently burned by nightriders, are giving a miscellaneous shower of household articles to her with which to refurnish her home.

Reducing Limits to Come Up Again.

CENTRALIA, Wash., April 25.—(Special).—An election has been called for next Tuesday by the Town Council at Winlock to vote on reducing the corporate limits of the town. This is the second time this year the voters of Winlock have been called upon to vote on the question, the first election having been called in February. At that time the proposition was defeated.

Seattle Man Shoots Self and Wife.

SEATTLE, Wash., April 25.—Boyd F. Reed, a streetcar motorman, 32 years old, shot and killed his wife, Angelina Reed, aged 26, tonight and then shot and probably fatally wounded himself. They were married two months ago, but lived together only a short time.

Advertisement for 'The Doctor's Advice' by Dr. Lewis Baker, featuring a portrait of the doctor and text describing the medicine's benefits for various ailments.

Advertisement for 'GREAT SPECIAL OFFER' on HAYNER BOTTLED-IN-BOND WHISKEY, including details about the offer and a list of participating distillers.

Advertisement for 'D. D. D. Prescription' and 'D. D. D. Soap', describing their uses for skin conditions and general hygiene.