

**EIGHTY-FIVE TON
STACK OF CLOVER**
ON PILOT BUTTE RANCH

CENTRAL OREGON is a great hay country. All kinds of hay thrives there—timothy, alfalfa and clover. Every farm of consequence produces its crop of hay each season. Much of it is consumed on the farm. Much of it is baled and shipped to Portland. The Pilot Butte Ranch in Crook County is one of the most successful producers of clover. Last Fall 85 tons of clover hay, harvested from this ranch, was stacked near the main road leading to Bend. The hay is hauled to the stack on big two-horse ladders and hoisted into place on an improvised derrick with pulley attachments. Horses furnish the power for hoisting.

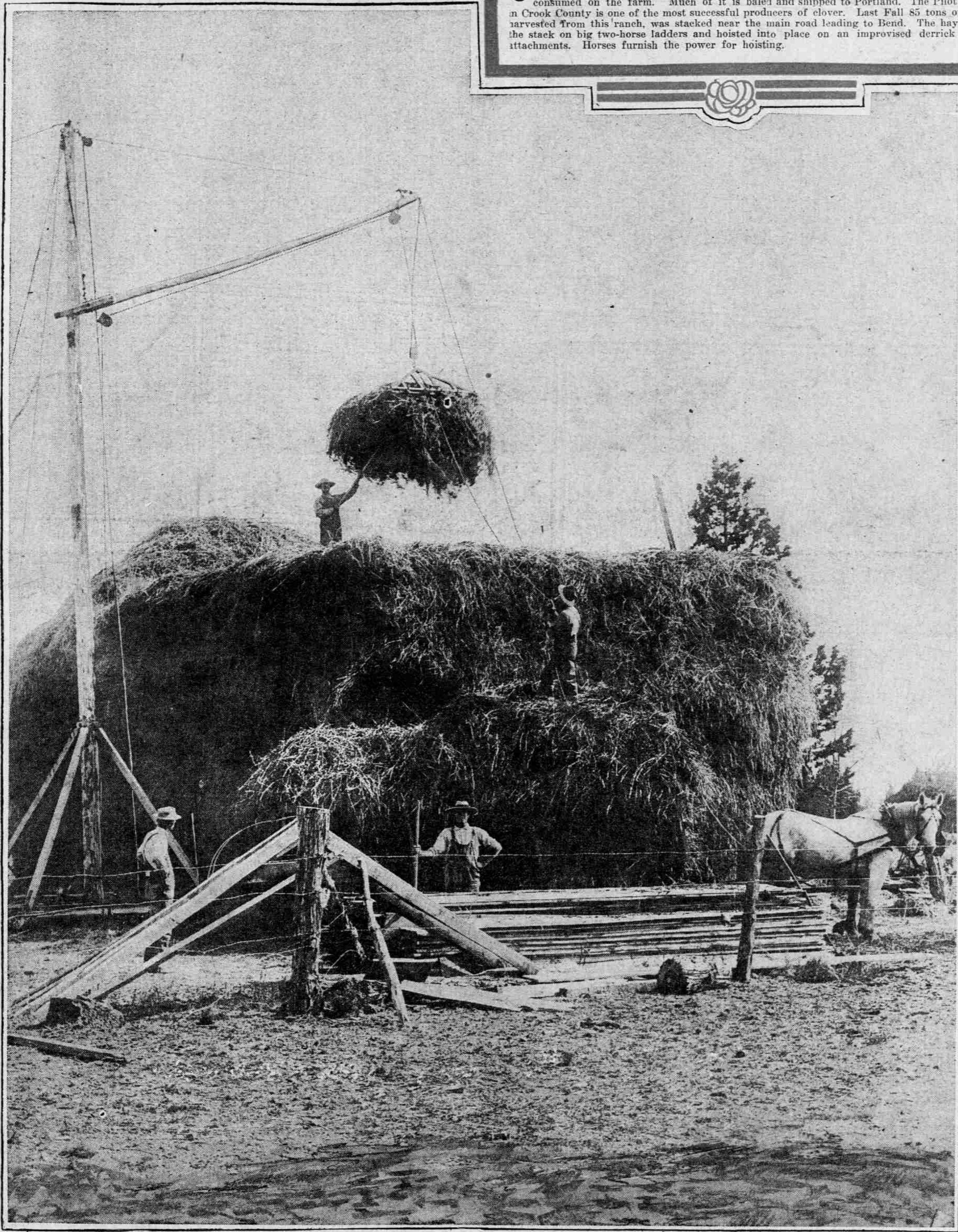


PHOTO BY B.A. GIFFORD.