

Great \$500,000 Clearance Sale—Every Article Reduced

"Baby Week" on 3d Floor; Prices Much Reduced—Agents Butterick Patterns, Nemo, Gossard "Lace Front" and American Lady Corsets

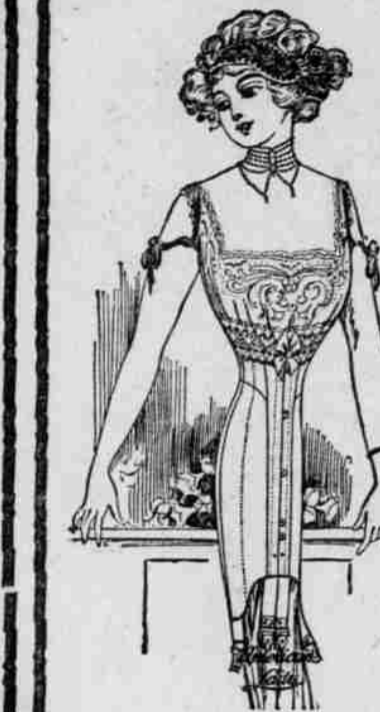
10c Marseilles Bibs, specially priced at 5c
 25c infants' sample Vests, special at only 10c
 35c infants' sample Vests, special at only 15c
 50c infants' sample Vests, special at only 25c
 5c infants' sample Vests, special at only 39c
 65c infants' flannelette Gowns, special, 39c

50c and 75c infants' pure silk Hose, 25c
 samples, on sale at the low price, pair
 \$1.25 and \$1.50 infants' all-wool Sweaters 98c
 \$2.00 infants' two-piece knitted sets, \$1.25
 50c infants' white Crib Blankets, special, 25c
 75c infants' heavy knit Sweaters, special, 49c

The Holtz Store
 GOLD BOND TRADING STAMPS
 WITH EVERY PURCHASE
 HOLTZ CORNER
 5th & WASH. STS.

Groceries at Special Prices Monday
 1000 cans best Calif. Asparagus at, can, 17c
 Spanish Stuffed Olives, pint jar, special, 20c
 Pork and Beans, can at 20c, 12c and 8c
 Waw-waw Cold Meat Sauce, bottle, spe, 19c
 C. & B. Chow Chow, bottle, special, only 23c
 Fancy Cresca Stuffed Dates, box, special, 35c
 2-lb. pkgs. Rolled Oats, for this sale at 10c
 Elk Laundry Soap, 11 bars, special at 25c
 Economy White Soap, 7 bars, this sale at 25c
 Blueing, special for this sale, bottle, only 5c
 Gold Dust, large package, special at only 20c
 Fancy Jams and Preserves, jar, special at 23c

Great Introductory Sale of American Lady Corsets



3000 American Lady Corsets—all new models are included in this sale and you have the advantage of selecting now from this vast assortment just the corset you want at a big saving on the purchase price. The American Lady Corsets are world leaders in perfection of style, material and design. Women of fashion everywhere are wearing American Lady Corsets. The sale prices will continue only during our January Clearance Sale. Scores of models at extraordinary reductions. A few are quoted here for your inspection

Best \$1.00 and \$1.25 Models at 89c
 No. 120—Made of French coutil, with deep lace top, cut on the new long lines; full complement of hose supporters. Specially adapted for slender and medium figures. Our best regular \$1.00 and \$1.25 models, at 89c.
 No. 125—Of fine batiste, specially modeled for slender figures, four hose supporters, and finished with medium hip and bust, from 18 to 24.
 No. 1104—Of French coutil, in excellent quality, cut on the smartest new lines and finished with handsome embroidered band top; two pairs of hose supporters; medium bust, long hips; sizes up to 26, in this sale, special at only **89c**

"American Lady" \$1.50 Models \$1.35
 No. 192—A Corset of superior merit, cut on the very newest lines, which form a perfect model foundation for any gown. These Corsets are specially constructed for hard wear and absolute satisfaction. Two pairs of hose supporters and handsome embroidered top; standard price \$1.50; our sale price, now **\$1.35**

"American Lady" \$3.00 Models \$2.25
 Nos. 298 and 250—One is the new boneless hip model for slender and medium figures, cut on especially well-fitting lines; the other a most ideal model for medium and stout figures, medium length with wide front steel, reciprocal waist line and 3 pairs of supporters. Regular \$2.50 and \$3 values **\$2.25**

"American Lady" \$3.50 Models \$3.15
 No. 328—Copied after the very spurtiest French models, constructed of finest imported coutil; attractively finished with deep lace border and satin ribbon and three pairs of hose supporters. Sizes up to 30. Our best regular \$3.50 values, offered special in this sale at the low price, in pairs of only, the pair **\$3.15**



\$1.25 Crepe de Chine 89c

\$2.25 Crepe Meteor \$1.49

On sale Monday, 1000 yards of best \$1.25 all pure silk Crepe de Chine, the favorite fabric for dancing frocks and afternoon gowns, in black, white and a complete assortment of light and dark shades; the regular \$1.25 quality, yard, only **89c**
 1200 yards of Crepe Meteor in most excellent \$2.25 quality—the most fashionable fabric for Spring, 1913. A soft, clinging material of lustrous finish; black, white and all afternoon and evening shades. Special sale price, Monday **\$1.49**
 Best \$3.00 Satin Charmeuse of heavy pure silk, all colors; \$3 to \$3.25 vals., yd. **\$1.89**

98c Embroideries 59c

35c Embroideries 25c

3000 yards of 27-inch Swiss Embroidery Flouncings in beautiful sheer quality, with well-worked open or semi-blind designs; also 45-inch Flouncings, 59c
 Cheap at 98c a yard, in this sale, special, yd. **25c**
 2000 yards of best 35c nainsook and cambric corset cover Embroideries in neat, well-worked patterns, some with lace edge effects; 18 inches wide, **25c**
 4000 yards of 10c and 15c Embroidery, Edges **5c**
 All Beaded Garnitures, special, ONE-HALF PRICE
 All Beaded Tunics, in this sale, ONE-THIRD OFF

Fifth Floor Bargain Store

6c Prints for 3 1/2c

12 1/2c Ginghams 8 1/3c

3000 yards of best double fold Dress Gingham in a choice variety of patterns. On Fifth floor Monday, 20 yards, 3 1/2c to a customer, special, yd. **3 1/2c**

25c Sheetings 19c

Full bleached and 2 1/2 yards wide, best wearing standard Sheetings, always 25c yard, on the fifth floor Monday at only, yard, **19c**

15c White Goods 10c

3000 yards of new fancy White Goods, in a very wide assortment of dainty stripes and checks. On the fifth floor tomorrow, yd. **10c**

12c Percales at 6c

5000 yards of medium and dark colored Percales, regular 12 1/2c values, on the fifth floor Monday at the low price, yard, **6c**

Cotton Remnants

500 remnants of Cotton Wash Goods, including Ginghams, Dimities, Batistes, Lawns, etc., in all lengths from full dress lengths to 1 3/4 yard, at **\$1.49** and down to **3c**

Linen Remnants

500 remnants of Table Linens and Toweling, in all qualities and kinds, from 5 yards down to 3/4 yard, pieces, priced from **\$1.95** to **2c**

Wool Remnants

200 remnants of Wool Dress Goods, plain colors and fancy suitings in every length from 1/2 yard trimming length up to full dress patterns, priced **\$2.95** down to **19c**

50c China for 10c

On the fifth floor Monday, all size plates, cups and saucers, sauce dishes, nappies, bon bon dishes, platters, etc., values to 50c each, **10c** placed on sale at, your choice

\$1.00 Gowns 59c

Women's flannelette Gowns of good, heavy, fleecy quality, in white and pink and blue striped; nicely finished with fancy braid. Regular \$1 garments, special fifth-floor bargain price, while they last **59c**

Women's Coats Up to \$25.00 at \$8.95 Dresses Up to \$18.75 at \$8.95



The greatest of all garment clearance sales brings this greatest Coat bargain into special prominence tomorrow. Gathered into one special lot, all our high-grade black broadcloth, striped tweed and diagonal cloth Coats, smart Johnny Coats, Misses' Norfolk and loose box-style Coats—more than 300 new, up-to-date garments—bound to include **\$8.95** just the coat you want. Regular values up to \$25. Your choice for this great clearance

100 BEAUTIFUL NEW DRESSES of French serge, storm serge, Panama and all-silk taffeta; products of leading New York designers; full of all the style and elegance you could expect, from the most clever garment makers in the world. Colors include red, navy, brown, Alice blue and black, and all desired shades. Regular \$15 and \$18.75 values **\$8.95**

\$25.00 Fur Sets \$15.00

Handsome sets of Beaver, Marten, Opposum, fur, consisting of large shawl collar and large pillow muff trimmed with head and fox brush tail. Regular \$25 sets in this January Clearance Sale at... **\$15.00**

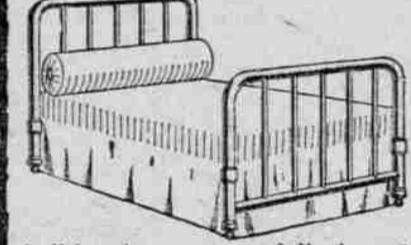
\$4.75 Children's Sets \$2.98

Children's Fur Sets of white angora and lamb, a deep sailor collar and muff to match. Regular \$4.75 value, at **\$2.98** January Clearance Sale, at

\$4 Bath Robes \$1.98

Women's printed flannelette Bath Robes in two-toned conventional designs in blue, brown and gray and plain gray trimmed with large collar revers and cuffs of black and white check materials. Reg. \$4 val. **\$1.98**

Clearance Sale of Beds, Sheets, Pillow Cases



This guaranteed \$25 brass bed, made with 2-inch continuous posts and 5 large 1-inch fillers, full ball-bearing castors, full size. Special tomorrow at only **\$14.75**

All other Brass and Iron Beds are greatly reduced during the January Clearance Sale.

\$20.00 Brass Beds, special sale price, **\$12.75**

\$12.00 Brass Beds, special sale price, **\$ 7.98**

\$10.00 Enameled Beds, special price, **\$ 8.49**

\$10.00 Enameled Beds, special price, **\$ 6.75**

\$ 8.00 Enameled Beds, special price, **\$ 5.49**

\$ 6.00 Enameled Beds, special price, **\$ 3.98**

\$ 4.00 Enameled Beds, special price, **\$ 2.75**

All of standard qualities, torn and hemmed, soft finished, ready for use. Sale on the balcony.

Best 12 1/2c Pillow Cases, sale price, only **10c**

Best 15c Pillow Cases, sale price, only **12 1/2c**

Best 16c Pillow Cases, sale price, at only **14c**

Best 20c Pillow Cases, sale price, at only **16c**

Best 25c Hemstitched 45x36 Pillow Cases, **20c**

Best 50c full-size Sheets, sale price, only **39c**

Best 60c full-size Sheets, sale price, only **49c**

Best 65c full-size Sheets, sale price, only **54c**

Best \$1 Hemstitched 81x90 Sheets at only **79c**

20c Challies Now 12c

2500 yards of beautiful Swiss Challie; a dainty, soft fabric for afternoon costumes, house dresses, waists, etc. Comes in stripes, dots, floral effects and a variety of very attractive border designs. Sold regularly at 20c a yard. On the balcony Monday at only **12c**

12 1/2c Printed Flannelettes at 9c

In patterns especially adapted for kimonos, dressing saques, etc.; light, medium and dark grounds, in a large variety of choice patterns. Best 12 1/2c values. Monday at only **9c**

BAKER TAKES LEAD

Oregon and Idaho Y. M. C. A. Men in Convention.

BOISE SHOWING RESULTS

Large Car Constructed and Assigned to Work in Lumber Camps of Idaho Develops Interest in Association Labor.

FOREST GROVE, Or., Jan. 11.—(Special.)—With 150 delegates present, the 13th annual convention, Young Men's Christian Association of Oregon and Idaho, opened in this city Friday evening at the Congregational Church, President Fletcher Homan, of Willamette University, president of the last convention, presiding.

The opening services were led by H. W. Stone, of Portland, general secretary, followed by the appointment of the committees on credentials and nominations. Alfred C. Schmitt, vice-president of the First National Bank of Albany, and chairman of the state executive committee, submitted the annual report of that body, a synopsis of which shows great advancement in the work of the association during the year just ended.

Great interest was aroused in the Y. M. C. A. throughout Idaho, by means of the eight-day campaigns of the "Men and Religion Movement," Boise proving the most fruitful in results. Four conferences for older boys were held during the year, two in Southern Idaho, which were attended by 650 different boys. One in Southern Oregon was attended by 72 delegates, representing nearly every town in the district covered.

In the establishing of new associations, Baker takes the lead, the Y. M. C. A. building now under construction there, and which will be completed about the middle of March, promising to be one of the handsomest structures in the city and one of the nearest appearing in the Northwest. A combined city and industrial building was opened in December at Harrison, Idaho, which cost about \$6000. The newest association is at Albany, where a suitable building, containing a gymnasium and

other social rooms, has been secured and is being remodeled for temporary use, the intention being to erect a suitable building in the near future.

In the industrial fields, considerable work has been done at Kellogg and at Arrowrock, Idaho. An additional building has been opened at camp No. 3, on the Celilo canal project, and a clubhouse is being maintained at Bull Run, on the Portland Railway, Light & Power Company lines.

A large car has been constructed and assigned to work in the lumber camps of the Potlatch Lumber Company in Idaho. This is the first effort of this kind undertaken in that state.

The financial report of the association shows receipts amounting to \$3946. From various sources, which has been entirely expended in the work of the organization. For 1913 it is estimated that approximately \$11,500 will be needed to continue the projects now under way and to further extend the work of the association, in Oregon and Idaho.

Rev. John H. Boyd spoke at the opening services on "The Bible in its Relation to Education."

John P. Congdon, a civil engineer of Boise, was elected chairman of the convention; Carl Sox, an attorney of Albany, first assistant, and Professor H. L. Bates, of Pacific University, second assistant.

Raymond Robbins spoke at the Congregational Church on "The Efficient Christian and the Social Message," and Fred B. Smith, the noted evangelistic worker, upon "Abounding in This Grace Also." The noon meeting for men was addressed by E. W. Peck, who spoke to a crowded house.

STEAMER RUTH BEACHED

LOSS OF CARGO OF PAPER WILL BE 90 PER CENT.

Gladstone Scene of Grounding After River Craft Hits Gravel Bar at Willamette Rapids.

OREGON CITY, Or., Jan. 11.—(Special.)—With her wheel under water and two-thirds of her hull submerged, the steamer Ruth, with a cargo of \$12,000 worth of paper, is beached near Gladstone. The loss to the paper is about 90 per cent and the steamer is badly damaged. The Ruth, which is the property of the Willamette Navigation Company, about 8 o'clock this morning struck a gravel bar at the Willamette rapids, tearing a hole in her hull. Her captain, Fred Hegdale, realizing that the craft was badly damaged, steered for Gladstone and beached the steamer.

The paper was from the mills of the Willamette Pulp & Paper Company and the Crown-Columbia Paper Company. R. T. McBain, mill manager of the Willamette Pulp & Paper Company, said that the paper which had been damaged could be made over, but the salvage would be small. The boat will be saved, although the cost of raising and repairs probably will amount to several thousand dollars. Both steamer and cargo were fully insured.

Upon striking the bar the steamer began to list, and the steamer Annie Comins, which was coming to this city from Portland, soon stood by. The steamer N. R. Lang, also en route from Portland, answered the call for help in less than half an hour. "There was nothing, however, the other boats could do, for the Ruth had been beached before their arrival and the crew was never in danger. Announcement was made tonight that the work of unloading the disabled vessel would be begun at once, and she would be repaired as soon as possible. The Ruth left the locks here at 7 o'clock this morning bound for Portland.

RIVER STEAMER WRECKED YESTERDAY.



RUTH BEACHED AFTER STRIKING ROCK IN CLACKAMAS RAPIDS

AROUND THE WORLD.

Around the world for \$639.10 is the rate made by the Canadian Pacific.

The first excursion will start April 1 with the sailing of the Empress of Russia, the Canadian Pacific's new Pacific liner. A month later the Empress of Asia will sail with a similar excursion. For full particulars apply at Canadian Pacific, Third and Pine (Multnomah Hotel building).

Luther Warren, free lecture today 3 P. M., Woodcraft Hall, Tenth and Taylor.

Priest's Advice Led To Her Recovery

To say that a specific exists for the cure of Consumption is perhaps too strong a statement, but in Eckman's Alternative we have a medicine that has been the means of saving many a life to years of usefulness, and in permanently benefiting a large number of Consumptives.

Certainly a person afflicted with a wasting disease should be well fed with some nourishing food, but frequently raw eggs in quantities cause a diarrhea instead, and then no food nourishes.

An' diet that keeps a Consumptive well-nourished is the right one, but what's going to improve the patient? Eckman's Alternative has brought about full recovery in many cases of Consumption. Let those speak who know. Here is one:

Rockester, N. Y.

"Gentlemen: On June 3, 1907, I was operated upon for tubercular peritonitis at St. Mary's Hospital, Rochester, N. Y. After the operation my physician gave me up as hopeless. I was then urged by a priest to take Eckman's Alternative, which I did. My weight at the time was 72 lbs. I began to gain weight, and in a few days my strength. I now weigh 125 pounds, and am absolutely well. Believing I owe it to myself and others, I make this statement."

(Signed Affidavit) EDNA FINNER.

Eckman's Alternative is effective in Bronchitis, Asthma, Hay Fever, Throat and Lung Trouble, and is splendid for the system. Does not contain poisons, opiates or habit-forming drugs. For sale by The Owl Drug Co. and other leading druggists. Ask for booklet telling of recoveries and write to Eckman Laboratory, Philadelphia Pa., for additional evidence.

EUGENE FRUITMEN BUSY

MORE THAN 17,000 CASES ARE CANNED BY GROWERS.

Total Cost of Packing and Selling to Association Figured at \$29,825, According to Report.

EUGENE, Or., Jan. 11.—(Special.)—More than 17,000 cases of fruits and vegetables were canned the past year by the plant of the Eugene Fruitgrowers' Association, according to the report of Manager Holt, read before the stockholders at their annual meeting here today. Of the produce packed,

all but 2000 cases had been sold by the first of the year. The total cost of packing and selling was \$29,825.

Early indications that the prune and cherry crops would be short, induced the association to turn greater attention than usual to the canning of vegetables. The pumpkin output of the Eugene cannery was probably one of the largest in the state.

Cabbage was put up in various sized cans as usual, and is finding a ready sale, as consumers generally are becoming educated away from the ordinary kraut barrel of the corner grocery. If the demand seems to warrant, kraut and bacon and kraut and sausage will be canned.

Of all the products of the association, four find markets east of the Rocky Mountains; the rest have to depend on the local and Northwest markets. Oregon pears, by reason of their high quality, can be shipped into the Mississippi Valley and there command double the price of the local product. Red raspberries, loganberries and cherries are the three that are also able to compete in the Eastern markets because of their superior quality.

The Lane County boards have proved to give an extra quality of canned product.

The total number of tons of vegetables canned in 1912 was 268, as compared with 69 for the previous year, and of berries that were canned in 1912, 147 tons, as compared with 44 for the year before. The aggregate pack of fruits and vegetables will fill 46 cars.

Directors were elected as follows: H. F. McCormack, F. B. Chase, George A. Dorris, M. H. Harlow, Ernst Miller, J. Beebe, F. H. Harlow, J. O. Holt and John Thramer. The directors re-elected the officers of last year, who are: H. F. McCormack, president; J. Beebe, vice-president; First National Bank, treasurer; J. O. Holt, secretary and manager.

LAST WEEK

GUILLE

Special Request

CELEBRATED TENOR

ALSO

MISS McDONALD
 CLARK & WILSON
 MISS TOVIN
 PEARL GILMAN

Unsurpassed Cafe Vaudeville

NOON AND EVENING

ARCADIAN GARDENS

Business Lunch 12 to 2 at 50c

H. C. Bowers, Mgr.
 Gainer Thigpen, Asst.