

STREET WIDENING AID TO DISTRICT

Improvement of East Glisan Will Open Extensive Residence Section.

IMPORTANT ARTERY FOUND

Boulevard 80 Feet in Width and 15 Miles Long to Be One of Finest in City—Railroad Grade to Be Lowered.

In Center Addition, the district east of Laurelhurst, much progress has been made the past year. The most

the main line of the O-W-R & N. on out to the city limits, joining the Rose City Park district.

CHEHALIS SCHOOL SMALL

Bond Election to Provide for Addition Defeated by Water Party.

CHEHALIS, Wash., July 27.—(Special.)—Chehalis School Board has abandoned plans for erecting a concrete addition to the rear of the high school building, owing to the bids being higher than anticipated. It was intended to pay for the work by warrants issued for emergency purposes.

At a special election held some time ago, shortly previous to the water bond election, there was an active fight made by those favoring a municipal gravity water system against voting bonds which would erect an addition to the high school. Friends of the water plan feared that success of the school bonds might imperil their project and they succeeded in defeating the proposed issue for school purposes.

Now that the board of four arbitrators, selected by the City Commission and the local water company, have summarily adjourned owing to their inability to agree on the fifth member, and there seems a serious question as to how to get into court to compel an arbitration of the matter, there is no early prospect of carrying out the gravity water plans. The citizens of Chehalis will also

BAKERIES PROTEST BOYCOTT CHARGE

Log Cabin and Royal Answer Allegation of Mutualist Association.

BOTH SIDES PRESENT CASE

New Co-operative Store at Albina Addresses Communication to Oregonian Asserting Double Discrimination.

The directors of the First Mutualist Association of Portland, have raised a protest against what they declare to

TAFT'S SIGNATURE MAKES BAY CITY DEEP SEAPORT

(Oregonian, Saturday, July 27.)

TAFT'S PEN OPENS UP HARBOR WORK

SIGNATURE TO CONGRESSIONAL BILL MAKES MONEY AVAILABLE AT ONCE

The signature of President Taft yesterday to the river and harbor bill, as passed by Congress, made the money carried by it immediately available for the work projected and in progress in this district.

This includes initial appropriations of \$100,000 each for the improvement of the entrances of Tillamook and Harbors, which will be under the direction of Major Morrow, and it is expected that before Fall these projects will be under way.

Work to Commence Soon as Possible

BAY CITY

Soon to Be Oregon's Second Metropolis

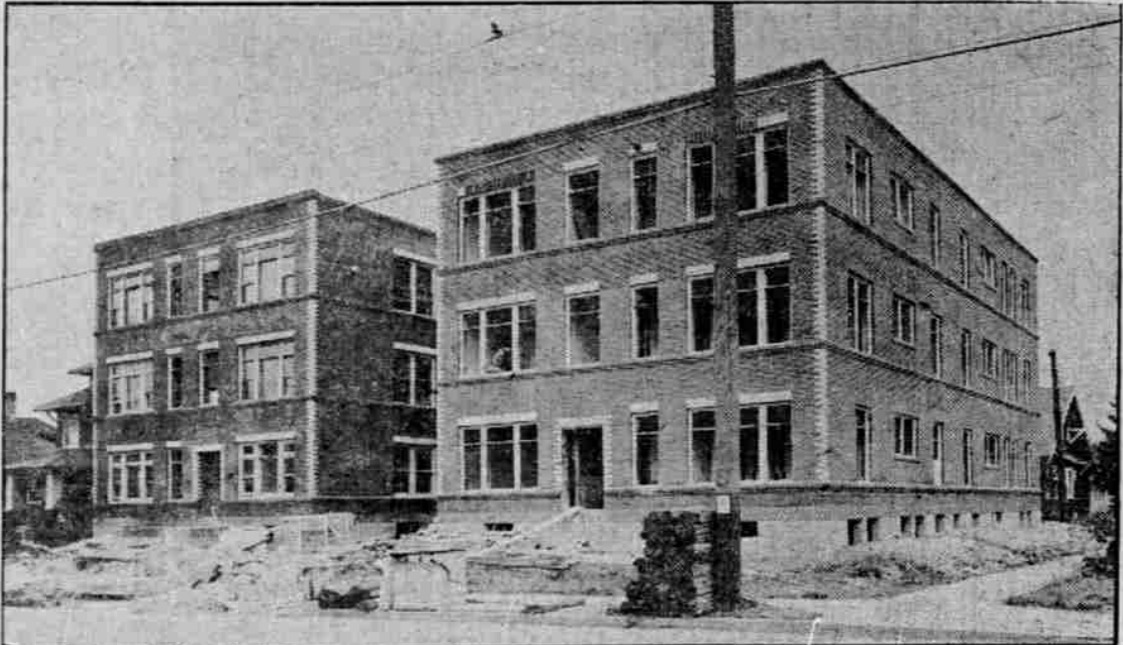
EXPLANATION—The Government Engineers estimate it will cost \$814,000 to complete the jetty at the entrance of Tillamook Bay and the deep channel direct to Bay City. The \$100,000 appropriation is only the initial money. The balance of the Government's half will be provided for by Congress just as it is needed.

(Journal, Saturday, July 27.)

NEWS OF SIGNING OF RIVERS AND HARBORS BILL MOVES ENGINEERS

Activity reigned in the offices of Majors Morrow and McIndoe, Corps of Engineers, United States Army, this morning on the receipt of a telegram from Washington, to the effect that President Taft yesterday signed the rivers and harbors bill. With the signing of the bill the appropriations for river and harbor work in the Oregon districts are released and money for improvements secured through the efforts of Senator Jonathan Bourne can now be used. Major Morrow said this morning that he will immediately write to the people of Tillamook and Tillamook County, which received appropriations of \$100,000 each for bay and harbor improvements, each of those places furnishing equal amounts. Work will commence as soon as possible.

MODERN APARTMENT-HOUSE NEARLY COMPLETED.



THREE-STORY BUILDING ON EAST SIDE TO COST \$40,000.
A modern three-story apartment-house is being finished at Williams avenue and Emerson street, North Albina, for Dr. Frank Holton, covering a quarter block, 100x100 feet. It is the finest structure of the kind in North Albina. The front facing Williams avenue is provided with a deep court extending well back from the street, which provides ample light and ventilation. There is not a dark room in the building. The cost will be about \$40,000.

NOW WATCH BAY CITY ON TILLAMOOK BAY

Hundreds of Doubting Thomases have been postponing their intention of buying lots in BAY CITY, thinking the Tillamook Bay improvements would never materialize. ALL DOUBTS ARE NOW DISSIPATED. Those who procrastinate further will have reason to lament their apathy when OREGON'S BEST OPPORTUNITY knocked repeatedly with pressing invitation to share in the FORTUNES TO BE MADE IN BAY CITY

Lots \$65 to \$1500 on Easy Terms

Absorb all the information you can about BAY CITY, the deep water seaport and railroad terminus on Tillamook Bay. Call or write for literature and other information about Oregon's coming second metropolis.

INFORMATION COUPON

Send full information about Bay City.
Name
Address

BAY CITY LAND CO.

701-2-3 SPALDING BLDG., PORTLAND

important achievement for that district is in the widening of East Glisan street from 60 to 80 feet, between East Forty-fifth and East Sixtieth streets, and the initiation of proceedings for the improvement of this street by grading and cement sidewalks.

Through the efforts of the Center Addition Improvement Association, three street improvement districts have been formed in Center Addition, located north and south of East Glisan and East Forty-fourth and East Fifty-sixth streets, in which all the streets will be improved by grading and laying of cement sidewalks. Considering that Center Addition has been "bottled" up in the matter of streets, these prospective improvements may be considered a good showing.

Sewers are to be laid through the district as soon as the East Stark street trunk is finished. This trunk will be extended through Center Addition to East Eighty-second street in Montavilla. Proceedings also are under way for the opening of East Burnside street between Laurelhurst and East Sixty-third street. Surveys have been made and stakes have been set for the extension of this important street. Within about a year Center Addition will be one of the best residential sections east of Laurelhurst.

The general plan is that East Glisan street, which has been an 80-foot street to the city limits and extended to Rockwood as a county road, will be graded and provided with sidewalks now, and later paved to the city limits. The street has been so improved between East Sixtieth and East Eighty-second streets now in accordance with this plan.

Important Street Opened.
That East Glisan will be a great street in future is conceded, as it will be the longest wide street on the East Side, not excepting Sandy boulevard. East Glisan will extend fully 15 miles from the Williams to River and 80 feet wide, with almost level grade for the entire distance. With a fine section on both sides, it will command a heavy traffic rivaling the Base Line Road. The men who initiated and brought about the widening of East Glisan street to 80 feet were making some local history, in the opinion of men who have studied the situation.

It will connect with the road to Fairview and Gresham and command much of the traffic which usually follows the Base Line into Portland. With the opening of the street between East Twenty-eighth and East Twenty-sixth streets, connection will be made with the Sandy boulevard, and the time will come in the near future when a bridge across Sullivan's Gulch will connect East Glisan with the new railroad bridge.

It has been decided that there shall be no grade crossing on the main line of the O-W-R & N, which traverses this entire district. The track at this point is somewhat low, but must be lowered more to admit of the erection of viaducts above the track. It was considered that the time will soon come when this section will be filled up, and grade crossings will be dangerous with the increased growth. To construct viaducts will be expensive and only a few will probably be built to start with, others to follow as may be required.

Carlisle is Sought.

North of the O-W-R & N line is a large district, including Euclid Addition, which is filling up with homes. The people of this section have started a movement to secure an electric railway on the Barr Road to connect with the Rose City Park line on Sandy boulevard. They have organized and will make a strong effort to get this extension. This branch will probably be built as far as East Eighty-second street when it is constructed. It will serve the large and growing territory between East Glisan street and Sandy boulevard, where it was proposed to build the city end of the Mount Hood Railroad.

The Country Club grounds are located in this district, besides which is the fine district extending eastward to the city limits. Settlement from Montavilla is swinging northward toward the Rose City Park district, forming a large section which is remote from any carline now constructed. It is covering the vacant land adjacent to

have to do without a much-needed addition to the high school facilities, the board having decided to rent extra rooms about town for school uses the coming year to accommodate the largely increased attendance.

HARRIMAN SPREADING OUT

Every Office in Wells-Fargo Building to Be Occupied by Road.

After August 1 every office in the great 12-story Wells-Fargo building will be occupied by the Harriman railroads.

But one concern not connected with the Harriman system remains in the building now. It has orders to vacate at the end of this month. Its present quarters will be taken by the Portland, Eugene & Eastern, under which name the Southern Pacific's electric lines in Oregon will be known and which now occupies almost the entire fourth floor of the building.

Even after this change is made the Wells-Fargo building will not be large enough to contain all the Harriman offices. Some departments now find room in the Penton building. As the business of the Harriman lines continues to expand it is probable that additional space will be sought in neighboring buildings.

EXCURSION IS WANTED

Floral Society Thinks Dahlia Show Will Be Big Attraction.

The Nehalem Floral and Industrial society has issued an invitation to the people of Portland to arrange an excursion and attend the big Dahlia Show, which its members propose holding the last week of August.

The society lays claim to having the place where the finest dahlias in the world are grown, and in the coming show, intend to vindicate its claims to visitors from all parts of the state and of the Northwest.

Not only does the society itself offer an attractive list of prizes, but several Portland merchants have also agreed to make donations to the premium list, to show the interest taken by this city in the show.

BIG BUILDING TO RISE SOON

Excavation Is Started on Corner on Lower Broadway.

Excavation for the basement of a modern building was started last week on the 100x100 corner at Benton street and Broadway. This will be one of the most desirable corners on the street, in that it is but a block from the end of the Broadway bridge now being pushed across the Willamette at that point.

Mrs. M. McAyeal, owner of the property has no very definite plans in view, but the basement is to be 12 feet deep and will answer for a large apartment-house, hotel or store and office building.

be a boycott on the part of the Log Cabin and Royal bakeries against the association's co-operative store recently opened in Albina.

It is declared by the directors that the two companies have refused to deliver bread and pastries to the store. The managers of the companies when seen yesterday declared that their action in refusing to deliver to the new store was not an attempt at boycott, but was because the institution did not use enough of the bread goods to warrant the companies soliciting their business and in so doing jeopardizing the sale of goods to the other stores of the neighborhood.

Communication Sent Out

The following communication has been received:
Portland, July 26th. To the Editor, As ordered by the Board of Directors of the First Mutual Association of Portland, Oregon, I request space in your valuable paper for acquainting the public with an apparent boycott against the Log Cabin Bakeries and the Royal Bakery.

The Log Cabin Bakery refuses to deliver bread and pastry to us because, as they state, the other grocers in this vicinity object. The Royal Bakery refuses to deliver, with no statement of cause whatever. In view of the fact that we are doing a strictly cash business, both in purchasing and selling, we resent any such action on the part of the business men of Portland. We believe that our money is as good as anyone's, and that if it were not for the fact that the grocermen to whom we have been paying the toll object from a selfish standpoint, these bakeries would not refuse to do business with us.

"We" Explained
In order that the public may know who is meant by "we," will explain that "we" means the membership of a Co-operative Grocery which has been established by the people in the Albina district. The object of this organization is primarily to reduce the cost of living by discarding such factors as are non-productive. The organization employs a manager to buy and sell at the best possible prices, selling at the regular rates charged by other grocers, balancing the business at the end of each quarter and returning to the membership the excess price the latter have paid for groceries in that time.

In comparison with the above actions, the courtesies we have received from the wholesale grocermen are a source of pleasure to us and denote an insight into future business on their part which the two aforesaid bakeries have not been able to grasp. In order that we be not misunderstood, will state that we are not a cut-rate organization, but sell for the same prices that others sell, and instead of their being one proprietor, there are a great number, the profits being divided among them.

Also be it understood that we have all the clean, wholesome bread we can sell and that the bakery from whom we buy is glad to sell to us. Also, if there are any other bakeries that can sell us cheaper with as good material, we will be glad to deal with them. This is respectfully submitted to the public for their opinion, and for information as to some of the causes of the high cost of living. Very truly,
B. O. KEAN,
Secretary-Treasurer,
First Mutualist Association of Portland.

Royal Stops Delivery

J. A. Heuser general manager of the Royal Baking Company said yesterday that his company has discontinued delivery of bread to the co-operative store because the stop there has not been profitable.

"The new store uses only about eight loaves of bread each day, he said, and it has not paid us to bother about going in with such a small order. It is a business proposition pure and simple and is not an attempt at boycott. At any time the co-operative store can give us an order that compares with

the orders of other grocermen in point of size we will be glad to furnish bread and pastry to the institution."

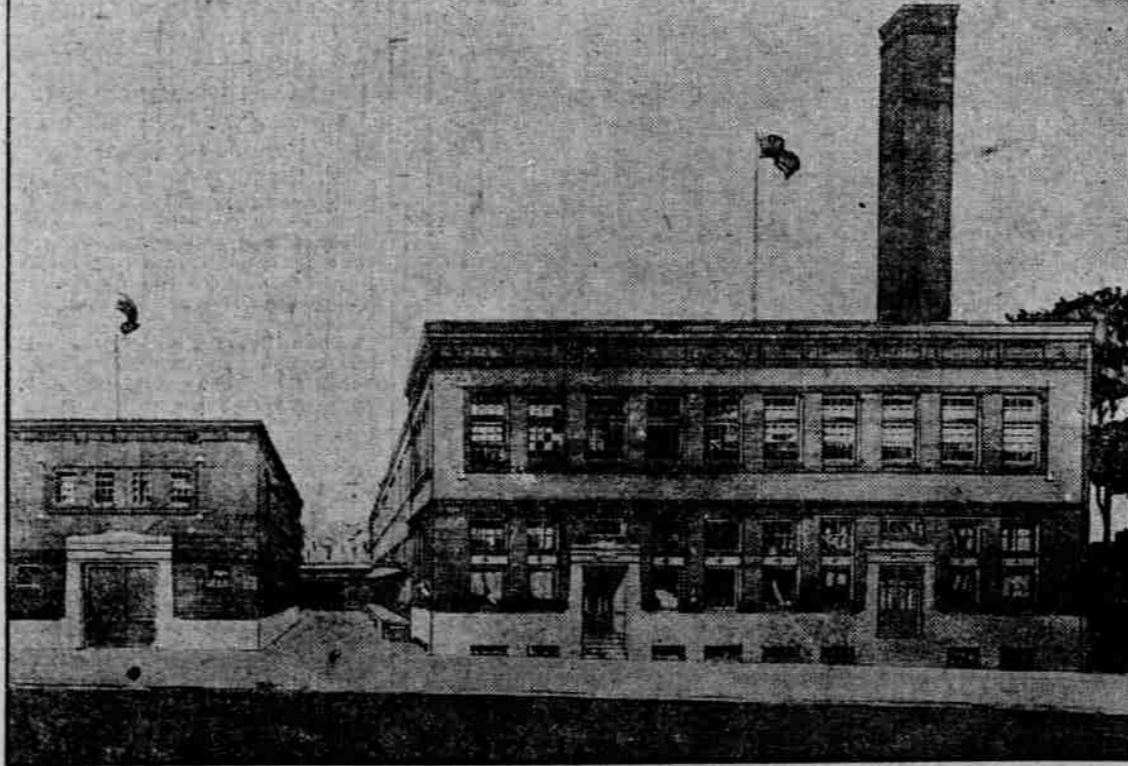
H. F. Rittman, manager of the Log Cabin Baking Company said yesterday that he has not positively refused to deliver bread and pastry to the co-operative store, but has not solicited the business because of the fact that there was a fight on between the old grocers and the new store.

"It is a matter of business with us," said Mr. Rittman. "If I should agree to give the new store bread the old stores would cut us out and sell the goods of other concerns. This of course would hurt our own business. It is up to me to protect my own trade and when I have to jeopardize the business of a good section of the city to win the favor of one concern I do not feel disposed to do so. Any time the business of the new store warrants our soliciting its business there will be no objection to furnishing our products."

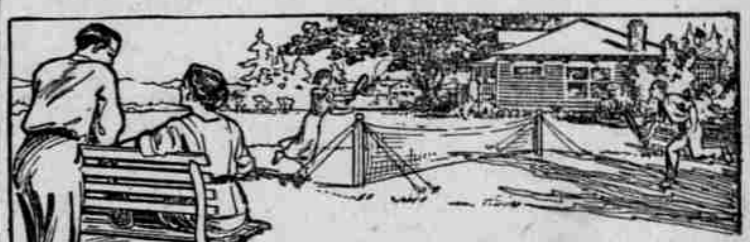
Railroad Commission to Be Busy.

SALEM, Or., July 27.—(Special.)—The State Railroad Commission is preparing for a busy 10 days with the following hearings set starting with next Monday: July 28—Hearing at The Dalles as to suspension of the fence law on the O-W-R & N, along the sand dunes of the Columbia. Tuesday, Wednesday and Thursday, three hearings at Baker—Sumpter Valley logging rates, brought by the Baker Commercial Club; Sumpter Valley valuation hearing and all rates on the Sumpter Valley brought on the commission's own motion; August 2—Two hearings at Vale—C. B. Smith against the Oregon Short Line, and A. B. Cox against the Oregon Short Line; August 5, at Kamela—Hearing as to loading facilities on the O-W-R & N; August 6, hearing at La Grande—C. A. Barrett and others as to fencing along the line of the Northern Pacific.

MODERN LAUNDRY BUILDING RISES ON EAST SIDE.



TWO-STORY STRUCTURE TO COVER LOT 122x125 FEET.
Work has been started on the modern two-story structure for the American Laundry Company on the East Side, the contract for the construction having been let to Thomas Muir a few days ago. The building will be located on East Third street, near East Glisan street. It will occupy ground space of 122x125 feet and will be of mill construction. It will contain two stories and basement. The exterior will be faced with brick. It will be one of the largest and most modern laundry buildings in the Northwest. The structure was designed by Aaron H. Gould, a Portland architect.



Compare This With Life in a Crowded Apartment

If the cost were the same which would you have—a "home" in a crowded apartment, with no room, little air, none of the pleasures of home—or would you choose

PARKROSE

with its broad acre for your home, with plenty of fresh air and sunshine, and best of all, the joys and comforts of a roomy country place right at the edge of the city?

With the cost the same, of course, you'd take Parkrose. But stop to think that living in Parkrose is only A FRACTION of the cost of living in town. There's no comparison. In Parkrose you can have your own vegetables, milk, butter, eggs, fruit—most everything you can think of and don't have to pay good hard dollars every time you turn around. Find out about Parkrose from us. Call us up or come and see us today.

SLAUSON-CRAIG CO.

304 OAK STREET. OPP. COMMERCIAL CLUB

ACTIVITY IN ALTAMEAD

One hundred men are working in Altamead. The cement walks and curbs are being put in as fast as material can be put in place, and a number of new homes are being constructed.

EASY TERMS

There is yet good choice, but if you delay long the price will be higher.

CHOICE LOTS AT \$500
Base Line Land Company, Owner
272 Stark Street