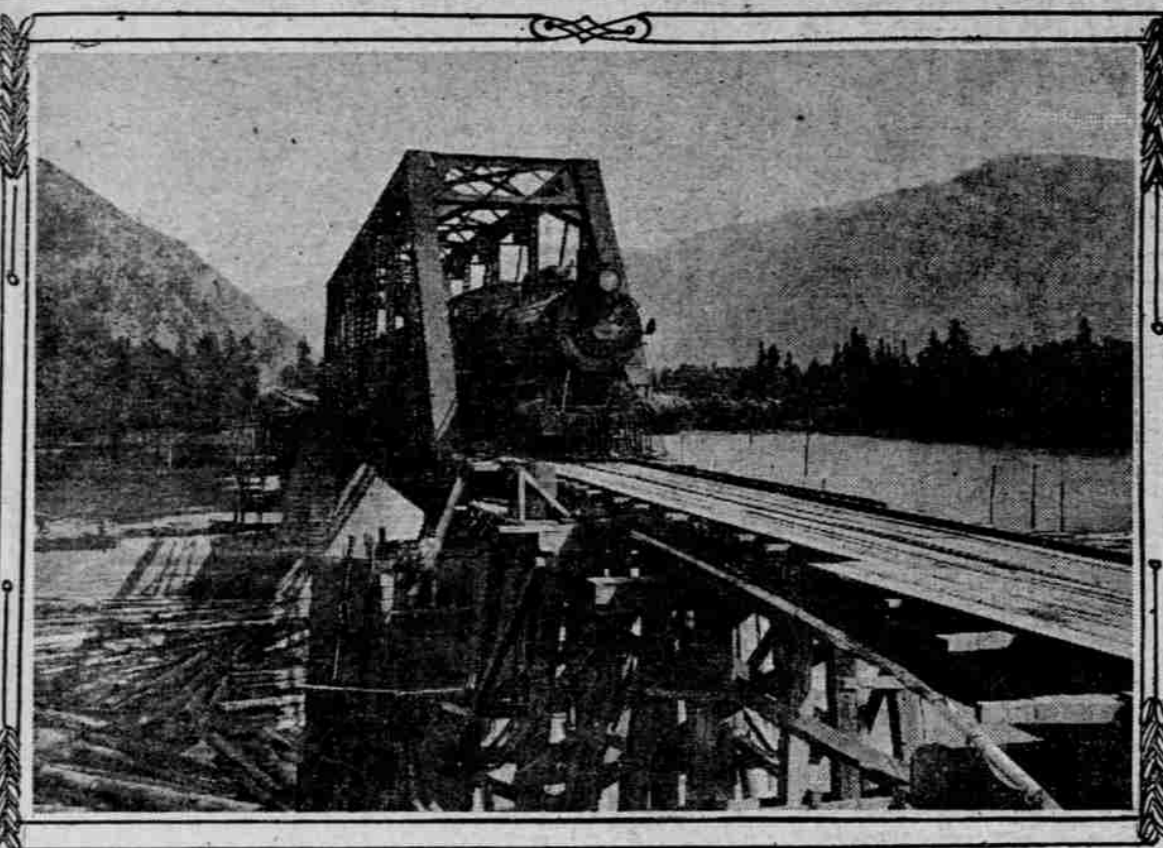


NORTH BANK RAILWAY IMPROVING ITS PORTLAND TO SPOKANE ROUTE

All Curves Are Being Reduced to Not More Than Three Degrees, and Immense Fill Is Being Made on 5000-Foot Trestle Near Cooks.



Wind River Bridge, Which Will Be Lengthened, and Trestle Which Will Be Filled

THOUSANDS of dollars are being expended by the North Bank Road in improvements and betterments to the line between Spokane and Portland. The big dredge North Bank is at present pumping mud and sand to fill the 500-foot trestle near Cooks. It is estimated that it will require more than 500,000 yards to complete this work. The dredge will make the fill within about eight or 10 feet of the to exceed \$55,000. The only curve on the North Bank

tracks when dump cars will be used to complete the work. Improvements are now under way at the Wind River bridge on the North Bank, where the line is adding one 50-foot deck plate girder on each end of the present 200-foot truss over the river. The bridge is one mile east of Carson. Workmen are also converting the present abutments into piers, building two new abutments and filling the balance of the trestle at a cost of \$1,000,000. The bridge is one mile east of Carson. Workmen are also converting the present abutments into piers, building two new abutments and filling the balance of the trestle at a cost of \$1,000,000. The bridge is one mile east of Carson. Workmen are also converting the present abutments into piers, building two new abutments and filling the balance of the trestle at a cost of \$1,000,000.

changed. This is the seven-degree curve line near Cascades. In reducing the curvature it will be necessary to remove 150,000 yards of dirt. The steam shovel shown in the illustration is used to tear down the embankment and transfer the dirt to dump cars. The dirt is being used to fill in trestles. The cars are now dumping at Carson, having completed the fill on the trestle west of Stevenson. When the track is changed at this point it will give the entire North Bank Road a maximum curvature of three degrees.

LOVE ADVENTURES MANY

ACCUSED EMBEZZLER ALSO TRIFLER IN HEARTS.

Leslie Wheeler-Reid Declared to Have Wooed Ardent Prior to Diamond Deal.

SAN FRANCISCO, July 20.—(Special.)—Testimony given Friday in the case of Leslie Wheeler-Reid and his half-brother, Charles Reid, the publishers who are charged with embezzlement of a large number of valuable diamonds, indicates that one of the accused men is a buccaner in the realm of hearts as well as that of diamonds.

It was added that Leslie Wheeler-Reid began freebooting in the domain of women's affections almost upon his arrival in San Francisco, to cease only after his marriage to Miss Olive Packard, the Denver girl who did not take the trouble to break her engagement to another before becoming Mrs. Wheeler-Reid. Among the young women to whom the gallant paid ardent court were Miss Susette Newton, daughter of Mrs. California Newton, and Mrs. H. R. Brown, who lived at the Palace. It is probable Miss Newton will be called as a witness and if she takes the stand she will be asked if she was not engaged to Wheeler-Reid. Detective Burke left today for Wheeling, W. Va., with extradition papers for the return of Charles Reid, who was arrested in that city yesterday after dodging the police two weeks. Charles Reid, who is said to be heir to a fortune approximating \$1,000,000, was arrested under the name of King. He is said to have cut a wide swath in fast society.

MAYOR SEES CLEVER RUSE

Opponents of New Power Company Know of Telegram, Is Belief.

When Manager Robb of the Western Union Telegraph Company denied positively yesterday that copies of telegrams from the Mayor and the Chamber of Commerce of Stockton, Cal., regarding the Northwestern Electric Company had been given to the newspapers before they were delivered to Mayor Rusklight, the opinion was expressed addressed, the opinion was expressed by the Mayor that the messages were solicited by those in Portland who are opposing the new company, and that they were merely sent to the Mayor to give them an official aspect.

The Mayor proposes to investigate the proposition further, to see the real source of the telegrams and the reasons for their appearance in the newspapers before they appeared at the Mayor's office, also the real cause of the messages having been sent. "It looks very funny to me," said the Mayor yesterday. "I cannot see how the messages could have got to the newspapers before they were sent to me, unless there was either a leak in the telegraph office or there was someone here who had solicited them and wished to use the Mayor's office as a tool for securing publicity on a scheme to oppose the granting of a franchise to the new electric company. I don't like such a proposition and if I can find out the facts I certainly will make them public."

NEWPORT HEARS TEACHERS

College Professors Speak at Week-End Social Conferences.

UNIVERSITY OF OREGON, Eugene, Or., July 20.—Three professors of the University of Oregon and one from the Oregon Agricultural College are taking part in the social conference at Newport this week-end. The speakers are H. C. Howe, professor of English literature at the university, who is living on his farm near Newport this summer, will speak upon "The Sociological Note in Modern English Literature"; Dr. Schafer, holder of the chair of modern history at the University, appeared on the programme Friday evening in a lecture upon "The Making of Communities: Local Individuality, Its Meaning and Its Possibilities." Mrs. W. S. Smith spoke on "Historical Incidents in the Planting of the Town of Newport," and Professor S. D. Beckwith, of the Oregon Agricultural College, spoke on "Methods of Securing a Healthy Community." The programme yesterday followed:

CLUB WOMAN VISITS CITY

Thanks Are Expressed

Mrs. Philip N. Moore, ex-President of Federation, Arrives.

One of the last of the prominent members of the Federated Women's Clubs to arrive in Portland after the convention at San Francisco is Mrs. Philip N. Moore, of St. Louis, the retiring president. Mrs. Moore arrived here yesterday with her daughter, and left last night for Seattle. Mrs. Moore was entertained during the day by Mrs. Frederick Eggert, president of the Portland Women's Club, and visited the Chautauque in the afternoon.

Upon Mrs. Moore lay the responsibility for rulling the suffrage resolution out of order at the convention, a ruling which at the time gave rise to the report that the convention as a whole was against the movement. Mrs. Moore said yesterday that she, like a majority of the delegates, was strongly in favor of equal suffrage. "I was compelled to give the ruling I did, not because I am against suffrage for women, but simply through the laws of our constitution, which have stipulated that no political or sectarian causes shall be introduced into the work of the body. In addition, the resolution came from the floor and not through the committee, and resolutions, another reason why it was out of order."

BRIDGE NEEDS REPAIRING

More Traffic at Rush Hours Will Make Structure Unsafe.

Some important repairs are needed to the Burnside bridge, particularly the track on which the draw is operated. This track is completely worn out, having been in use since the bridge was put in commission, 18 years ago. The track has been patched up, in order to keep the bridge in operation, but it will have to be replaced very soon. The East Side approach must also be repaired. The decking, it is reported, is

WAREHOUSE TO RISE ON EAST SIDE

Building for Portland Seed Company to Cost \$80,000.

Construction of a five-story warehouse at the southwest corner of East First and East Alder streets for the Portland Seed Company will be started at once. The building will cover ground area 100x100 feet, and will have a full basement of concrete construction. The exterior will be of red pressed brick. It will be one of the finest warehouses to rise on the East Side this year. The building will cost \$80,000. The contract for the construction has been let to the Bingham & McClelland Company. The plans were drawn by Aaron Gould.

PHILOMATH, Or., July 20.—(Special.)—George Cummings is building a store on the south side of the Columbus Weeds lot and fronting east, one block south of the depot. He will carry a general stock of the best grades of boots and shoes.

Mexico's government is planning to have postal savings banks.

Eaton, Idaho, Has Woodmen Camp. WEISER, Idaho, July 20.—(Special.)—Eaton, four miles west of Weiser, came into prominence this week as something more than a fruit-shipping station when Organizer H. W. Stoeker organized Eaton Camp, No. 8159, Modern Woodmen, with a charter membership of 25. Camps are to be organized in other outlying settlements near Weiser.

ASHLAND-MEDFORD WAY IS RIVAL ROUTE SUGGESTED.

Residents Claim Road Near Crater Lake Is Better for Scenery, Easier on Cars and Cheaper.

There are two possible routes north of Klamath Falls, one by way of the Deschutes region, which is mainly open country, and the other over one of the low passes across the Cascades to Eugene, thence through the Willamette Valley to Portland. This route has easy grades, inexpensive construction over the greater portion, little work overhanging canyons or along cliffs, passes through some of the finest timber in the country, and has magnificent views of mountain ranges, including Shasta, McLoughlin, Three Sisters and Jefferson.

KLAMATH WANTS DRIVE

City May Build Competing Plant.

Mr. and Mrs. D. A. Dinsmoor are spending a few days at Newport. They drove over in their auto by way of Kings Valley and report splendid roads.

LIBRARY FUND SHORT

Bids Will Be Opened August 3 for Construction.

Supreme Court Members Give Assurance of Support When Appropriation Is Asked.

SALEM, Or., July 20.—(Special.)—With announcement that bids will be opened for the new Supreme Court and State Library building on the state grounds August 5, it has also been determined that it will be possible on the present appropriation to construct only the brickwork, exterior and flooring and that the interior and finishing will have to depend on a further appropriation at the next session of the Legislative assembly.

EMMERICH PILLOWS

Here is a rare opportunity for you to get a pair of these high-grade pillows at a bargain. They're the very best pillow made, and the most popular. Emmerich 5-pound goose feather pillows, 22x28, in fine art ticking; a regular \$7 value; special this week at, pair, only \$4.95

MORGAN-ATCHLEY FURNITURE CO.

69-75 Grand Avenue Cor. E. Stark Street

Each customer shares the \$25,000 we save annually on interest and taxes because we built on the East Side

A Great Clearance Sale

Time to reduce our magnificent stock of Furniture, Carpets, Rugs, Curtains, Portieres, etc., and make room for our new Fall stock; we have therefore determined to make sweeping price reductions throughout this store in order to move them quickly. Such marvelous values are sure to attract a steady rush of eager customers here this week. It's a rare opportunity to furnish that new home complete at an extremely low cost. Go where you will, from one end of the city to the other, you'll not find the equal of these bargains. People like to trade here, because of our liberal easy-paying credit terms. Come in and talk it over with us.



Bargains in Rugs

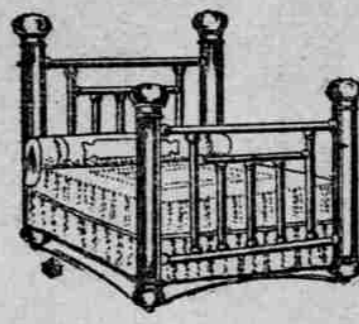
Come in early tomorrow and see the tempting bargains in Rugs. There are hundreds of designs, colors, grades and sizes to choose from. Sample hints:

Fibre and Wool Rugs, 9x12, artistic, sanitary and durable. An ideal rug for living-room, dining-room or sleeping porch; in browns, tans, blues and gray. Regular \$16.00 values; special \$11.95 clean-up sale price for only, each \$11.95

Rag Rugs—dainty creations, made of rags, for your bedroom or bathroom. Nothing so beautiful and practical for this purpose as these washable rugs. From 75c to \$12

Bargains in Comforters

Laminated cotton comforters, in beautiful silklike coverings—as dainty as any down quilt. Regular price \$6.50; special clean-up at \$3.95



Real Bed Bargains

You'll find here the greatest bargains in Brass and Enamelled Iron Beds that you've seen in months. Sample hints: No. 931—Cream, full size, chill-less 2-inch posts, low head and foot, regular \$15 value, special \$11.25 No. 723—White, chill-less, with 3 heavy fillers; a beauty; sells regularly \$16.50, special \$11.25 No. 440—Vernis Martin finish, full size, continuous posts, with 7 fillers, a splendid bed. Regular \$3.75 value, special \$5.45 No. 205—Poster pattern; Vernis Martin finish; a superb value at regular price of \$11.25. Special sale \$7.25 No. 1064—Full size white bed, with angle iron at head and foot; regular \$3.50 value; special clean-up sale price \$2.45

Why not trade in that old stove or range and get a BUCK'S? We're the exclusive agents for Portland, and have a complete line of these stoves and ranges. Doesn't matter whether you burn gas, coal or wood—we can please you. Buy a BUCK'S and you'll have the most beautiful, convenient, durable and economical stove or range made. Come in and learn why it is to your own best interests to buy a BUCK'S Stove or Range. On \$12.50 to \$50 clean-up sale at only \$12.50 to \$50



REFRIGERATORS

See our fine line of Indiana Refrigerators. All imperfections of other makes have been overcome. See the improved ice chamber, also the new sanitary ice rack. Provision chambers have four coats Neat's Baking Enamel. Because of the scientific construction of the walls, in addition to the granulated cork lining, it's the greatest ice saver made. Keeps the food pure and sweet. \$10.50 to \$60 All sizes. Priced only

25 Per Cent Off on All Porch and Lawn Furniture

Children's Sulkies, Regular \$2 Values, Reduced to . . . \$1.45

GO-CARTS 25 Per Cent Off

Your Credit Is Good



Emmerich Pillows

Here is a rare opportunity for you to get a pair of these high-grade pillows at a bargain. They're the very best pillow made, and the most popular. Emmerich 5-pound goose feather pillows, 22x28, in fine art ticking; a regular \$7 value; special this week at, pair, only \$4.95

Home of Duffy's Pure Malt Whiskey

The above illustration shows the magnitude of The Duffy Malt Whiskey Co.'s plant, at Waterloo, N. Y., and the executive offices of the concern at Rochester, N. Y. This manufacturing plant is the largest and most complete of its kind in the land, occupying over 15 acres. It is equipped with every up-to-date device, known to the art. There are immense duplicate warehouses a great distance apart, so in case of fire in one warehouse, the trade can be supplied and the high quality and excellence maintained.

How It Is Made—What It Does

Duffy's Pure Malt Whiskey is manufactured from specially selected and cleaned grain, the best that can be bought. Only the purest spring water is used at any stage. Every step in the process of malting and manufacture is watched most carefully by men of broad experience, under the supervision of a chief chemist. Great care is exercised to have every kernel thoroughly malted, producing a liquid food, tonic and stimulant, requiring no digestion, in the form of a medicinal whiskey, which has been for over 50 years and is to-day, the world's greatest medicine.

Taken as directed, it brings into action all the vital forces; it makes digestion perfect and enables you to get from the food you eat all the nourishment it contains, thus building up the nerve tissues, toning up the heart, giving power to the brain, strength and elasticity to the muscles and richness to the blood. It is a promoter of good health and longevity; makes the old feel young and keeps the young strong and vigorous.

BE SURE YOU GET DUFFY'S

Sold by druggists, grocers and dealers in SEALED BOTTLES ONLY, price \$1.00. If you can't procure it, let us know and we will tell you where to obtain it. Write for free doctor's advice and book of recipes for table and sick room.

THE DUFFY MALT WHISKEY CO., Rochester, New York