

DESERT RIDE IS FULL OF THRILLS

Automobile Party Caught in Heavy Snow Storm and Has Narrow Escape.

HORSES ARE SHOVED ASIDE

Motor Cars Invade Nevada Field With Good Results—Noted Pilot Favors Southern Cross-Country Route.

Traveling automobile factory representatives whose work calls them to

J. Neff, City Attorney, Medford; discussion led by Hon. William S. U'Ren.

"Justice in the Division of Cost and of Product of Industry Between Employer and Employee"—Paper by R. A. Harris; discussion led by James B. Kerr.

Second session—Friday, May 18, 2 P. M. "Economic and Social Factors in Oregon's Good Roads Problem"—Paper by George G. Putnam; discussion led by C. E. Spence, master State Grange, and Hon. J. H. Albert.

"Extension of the Area of Cultivation in Oregon Through Co-Operation and Social Organization"—Paper by W. E. Coman, general freight agent Hill lines; discussion led by John M. Scott, general passenger agent Southern Pacific lines.

Third session—Friday, May 18, 8 P. M. "The Problem of Transforming Oregon From a Merely Geographical to an Organic and Spiritual Entity"—Discussion by Hon. F. E. Beach and Dr. J. H. Wilson.

Fourth session—Saturday, May 19, 9 A. M. "Worthy Standards of Living on Normal-Sized Farms in Oregon." (Relying strongly on the extension of the use of electricity in agriculture)—Paper by W. T. Buchanan, publicity director Portland Railway, Light & Power Company; discussion led by Samuel M. Evans, editor Klamath Falls Northwestern, and Professor P. J. O'Gar.

"Improvement of the Economic Organization in Oregon for Securing to the Producer His Full Share of Values Created"—Paper by W. K. Newell, Gas-

PROMINENT PARTY FESTIVAL VISITORS

Delegates to Important Seattle Congress to Continue to Portland by Special Train.

JAMES J. HILL MAY BE HERE

Louis Hill Is Head of the Excursion. Development League Is Planned to Aid in Colonization of Pacific Northwestern States.

One hundred and fifty leading business men of the Northwest will com-

Tires That Pay Us Only 8 1/2% Profit

Goodyear No-Rim-Cut tires are made 10 per cent over the rated size, to save the blow-outs due to overloading.

They are made so they can't rim-cut—made so they stay on without hooking into the rim flange.

They are made of costly materials, by the costliest process, to give you the utmost mileage.

As a result, our profit last year on this patent tire was only 8 1/2 per cent.

Your Saving, 48 Per Cent

The 10 per cent oversize means 10 per cent more air—10 per cent added carrying capacity. And that, with the average car, adds 25 per cent to the tire mileage.

Tires that can't rim-cut mean an average saving of 23 per cent of all ruined clincher tires—the old-type tires—are rim-cut.

So these two features together, under average conditions, cut tire bills right in two.

200,000 Users

Over one million Goodyear tires have been tested out on some 200,000 cars. These 200,000 separate users have proved that our claims are true.

As a result, these tires outlast any other tire in existence. In two



GOOD YEAR
AKRON, OHIO

No-Rim-Cut Tires

10% Oversize

THE GOODYEAR TIRE & RUBBER CO., Akron, Ohio

PORTLAND BRANCH
62 Seventh Street
Phone Pacific Main 2190 and Home A 4046

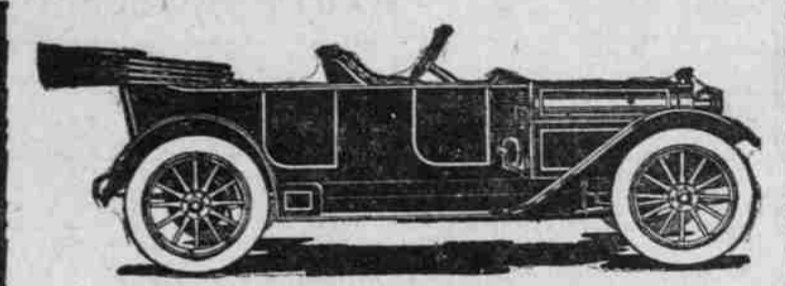
Forget Price!

It is no longer even fashionable to pay more for an automobile than it's worth. Take four cars costing one thousand dollars more, that suggest themselves to you.

Place them side by side with the Michigan—forgive it nothing—concede it no point it doesn't prove—forget price and just compare—point for point.

Wherever the Michigan 40's have not a better construction, they're the self-same features found in the higher-priced cars, including a dependable self-starter, electric lighting system, silent motor, large, roomy, comfortable bodies of elegant and graceful design.

A Request for a Demonstration Does Not Obligate You in Any Way



- Model K, 40 H. P. Touring Car
- Model H Touring Car, 33 H. P. . . . \$1500
- Model G Roadster, 33 H. P. . . . \$1500
- Model K Touring Car, 40 H. P. . . . \$1750
- Model M Roadster, 40 H. P. . . . \$1725

MICHIGAN AUTO & BUGGY COMPANY

NORTHWEST BRANCH—W. A. WILDRICK, MGR. Phones: East 1421, B 1345—369-71 Hawthorne Ave.

SPECIAL SHOW CARS ATTRACT ATTENTION OF PORTLAND AUTOMOBILE FANCIERS.



TWO PATHFINDERS WHICH WERE EXHIBITED AT THE NEW YORK AND INDIANAPOLIS AUTOMOBILE SHOWS.

out-of-the-way places often have unique and trying experiences. Ray McNamara, noted premier pilot and road driver and the man who led the caravan of motorists across the Continent last summer, recited an experience he had at Winnemucca, Nevada, recently.

"I spent several days there as the guest of the Havill-Hackins Stage & Livery Company, which uses motor cars in its desert service, and was one of a party that started out for a short ride," said McNamara, who was in Portland a few days ago. "It was the intention to drive only a few miles, but the road was so fine that we kept going, notwithstanding that we carried no extra inner tube or material with which to repair punctures.

"Thirty-five miles from home in the heart of the Nevada Desert a tire was punctured by a sharp bone of a dead animal and we were in a serious predicament. That was not the worst of our troubles, however, as the weather changes very quickly in that part of Nevada and a snow storm was soon raging. There was nothing to do but beat a hasty retreat for Winnemucca.

tion; discussion led by K. S. Miller, Medford.

Sixth session—(Joint meeting of Commonwealth Conference and Oregon Conservation Commission)—Saturday, May 26, 2 P. M. "More Active Co-Operation Between Oregon and the Nation for Promoting Right and Prompt Development of Oregon Resources."—Paper by John H. Lewis, State Engineer; discussion led by Henry S. Graves, forester, United States Forest Service; J. N. Teal, chairman Oregon Conservation Commission, and Hon. Walter M. Pierce.

"Corporation Law and Corporation Supervision for Oregon to Insure Safety to Investors and Efficiency for Development."—Paper by C. D. Babcock, corporation department.

Seventh session—Saturday, May 26, 8 P. M. "Oregon's Role in the Solution of America's New Problems."—Address by Hon. C. E. S. Wood.

prise a special trainload of guests who will be the recipients of marked attention during Rose Festival week. This party is making up an excursion over the Great Northern Railway to the Seattle congress of the Development League in session from June 5 to 8.

The itinerary calls for the departure of the special from St. Paul June 1 and stops are to be made at Fargo, Grand Forks, Lakota, Rugby, Devils Lake, Minot, Williston, Glasgow, Havre, Great Falls, Kalspell and Spokane. Delegates to the congress will join the special at the various places along the line where "burrah" stops are made.

The special will be one of the hand-somest trains that has ever left the Twin City and will be equal in its equipment to the famous Western Governors' Special and the Hotel Train. The special will be run under the auspices of the St. Paul Association of Commerce, Minneapolis Civic and Commerce Association and the Duluth Commercial Club. The return trip to St. Paul from Portland will be made over the North Bank and the Northern Pacific Railways. The trip to Spokane from this city is to be in daylight to give ample opportunity to view the scenic beauties of the Columbia River.

The itinerary calls for several side trips on the journey from St. Paul to Seattle. In Montana the party will travel for more than 40 miles along the southern boundary of Glacier Park. Uncle Sam's new National playground in the Northwest. The business men of the Northwest states will spend at least three days in Portland, when local business men will look after their entertainment. It is also expected that several Governors of the Northwest will be in Portland at the same time and the programme for Rose Festival week will include the proper entertainment of these prominent visitors.

Louis W. Hill, of the Great Northern Railway, will be of the party, as will other prominent men who are to make addresses at the Seattle congress. It is not improbable that Walter Fisher, secretary of the Interior, and James J. Hill, of the Great Northern, will be on the Northwestern Development League Special.

STREAMS ARE STOCKED

THIRTY THOUSAND TROUT SENT TO THURSTON COUNTY.

Fish Furnished by Nisqually Hatchery—Ladder Is Wanted in Deschutes River.

OLYMPIA, Wash., May 18.—(Special.)—Thirty thousand trout have just been planted in Thurston County streams by the local association for the protection of game fish. Of this number 25,000 are of the steel-head variety, and the remaining 5,000 are a new cross, noted for its palatable qualities as well as its gameness.

The fish were furnished by the Nisqually hatchery, situated 19 miles above Shellock, at the mouth of Mack Creek, and were planted by Father Mally and his associates in various streams in the county. The little fish were transported in six large cans, and their healthy and sturdy qualities are shown from the fact that not more than 25 of them died in transit. In consequence, the association will pass a resolution congratulating Superintendent Emil Glass, of the hatchery. Automobiles for the use of the officers of the association in planting the young steel-heads were furnished by Mitchell Harris and J. J. Brenner.

Every year the planting of young fish will be repeated by a quantity of rainbow trout were placed in the Deschutes River, and this year a number of them measuring as much as 12 inches have been captured by fishermen.

The 1912 Legislature will be asked to install a fish ladder at Tumwater falls in the Deschutes River, by the Legislative committee of the Thurston County Game Association. It is believed by those who have knowledge of the subject, that the installation of such a ladder would make the Deschutes one of the finest fishing streams in the country.

STREAMS ARE STOCKED

THIRTY THOUSAND TROUT SENT TO THURSTON COUNTY.

Fish Furnished by Nisqually Hatchery—Ladder Is Wanted in Deschutes River.

Catholic Foresters' Meeting July 4.

The annual picnic of the State Court of the Catholic Order of Foresters will be held at Tigard, July 4. The proceeds will be turned over to Rev. Father Soland, O. F. M., to be placed in the fund for the parish school he is planning to build. Every subordinate court in the state has arranged to work for the success of the outing and it is expected there will be a big attendance. A cordial invitation to attend has been extended to the general public.

Big Flock of Sheep Sold.

ECHO, Or., May 18.—(Special.)—Eight car-loads of sheep were billed from the O.-W. R. & N. Co. yards here yesterday to Chicago.

They will go to the entire distance over the Harriman system with grazing privileges in transit at Boise, Idaho. The sheep were purchased by Sam Ballantine, of Chicago, of Thomas Boylen, of this place, and will be grazed on summer range until fall, when they will be marketed in Chicago.

STATE'S WELFARE SUBJECT

Problems of Vital Importance on University Programme.

UNIVERSITY OF OREGON, Eugene, May 18.—(Special.)—Invitations have been issued for attendance at the Fourth Annual Commonwealth Conference to be held here May 24 and 25. Problems of vital importance to the people of Oregon will be discussed by representative speakers. The programme is in detail as follows:

First session—Friday, May 24, 9 A. M. "Taxation and Social Justice," paper by Charles V. Gallegos, chairman State Tax Commission; paper by Porter

How and Where to Get a New Home

in the American Northwest is the title of a new 50-page booklet issued by the Northwestern Development League for widespread distribution over the United States. Several advance copies have been received by the Portland Commercial Club.

On the cover page is printed that in the American Northwest are more than 22,000,000 acres of free government land, 72,500,000 acres of state and private land for less than \$20 an acre with the average value of all lands at \$22 per acre. The booklet is descriptive of the lands in Oregon, Washington, Idaho, Montana, North Dakota, South Dakota and Minnesota.

The officers and directors of the league are given, together with the names of the advisory committee consisting of the Governors of the seven states, and Walter Clark, Governor of Alaska; Louis W. Hill and Howard Elliott. In this booklet is a special article by James J. Hill on "What is the Northwestern Development League?"

A table prepared by immigration officials of the railroads and states give the increase in population, farms, farm acreage, acreage improved and the average increase per acre in the Northwest the last 10 years. Oregon is shown to have increased 259,229 in population. The increase in farms is placed at 3941 and the farm value at \$28,448,212. Increased acreage improved is given at \$46,495 acres and the average increase per acre at \$24.

In this booklet will A. Campbell, secretary of the organization, says that in getting out literature the league seeks only to give general information about public lands surveyed and unsurveyed, state school lands for sale, range of prices of all lands, possible production of various commercial grains, grasses, vegetables and fruits. He also gives the names and addresses of officers of commercial organizations in the leading cities and towns of every county in Oregon where information about lands or industrial and investment opportunities will be furnished free. United States land offices and the counties they represent in the state are also given.



Of the three languages do you speak—English—Baseball—or Motor? Half the motoring world talks "Ford"—and one-third of it rides in Ford cars. Every Ford owner is a Ford fan—that's one reason only we'll sell seventy-five thousand Ford cars this year.

- Yes—there is no other car like the Ford Model T. It's lightest, rightest—most economical.
- Ford Model T Touring Car, 4 cylinders, 5 passengers, fully equipped, f. o. b. Portland . . . \$785
- Ford Model T Torpedo, 4 cylinders, 2 passengers, fully equipped, f. o. b. Portland . . . \$685
- Ford Model T Commercial Roadster, 4 cylinders, 3 passengers, removable rumble seat, fully equipped, f. o. b. Portland . . . \$685
- Ford Model T Town Car (Landaulet), 4 cylinders, 6 passengers, fully equipped, f. o. b. Portland . . . \$1075
- Ford Model T Delivery Car, capacity 750 pounds merchandise, fully equipped, f. o. b. Portland . . . \$815

Ford branches and dealers in all cities, towns and villages are at your elbow with Ford Service for Ford Owners

Ford Motor Car Agency

Phones East 645, B 2117—East Eighth St. and Hawthorne Ave. E. E. SLERET, Mgr.

Piston Type Gas Saver An Auxiliary Air Device

The biggest little thing ever attached to an Automobile. PRICE \$6.50

Gasoline Economizer and Mixer. Saves up to forty per cent in gasoline. Gives a possible gain of from fifteen to twenty per cent in speed.

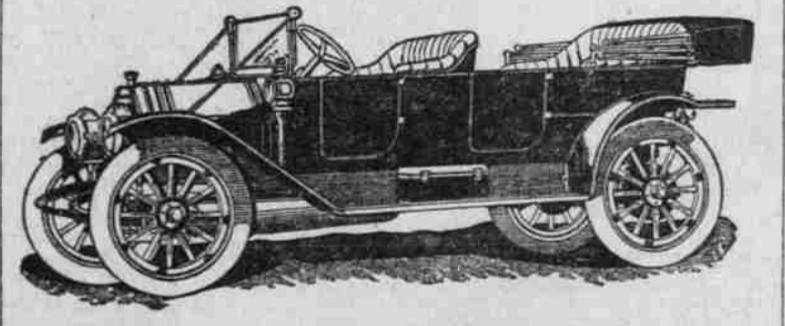
The Halliwell Company

W. J. Worthen, Manager
14 North Seventh Street, Portland, Oregon

HAYNES 1912

Product of 18 Years Automobile Building

Its mechanism is so scientifically perfect as to insure the most satisfactory service under any and all circumstances.



MODEL 21-5-PASSENGER 40-HORSEPOWER HAYNES

Fully Equipped \$2250 f. o. b. Portland

ARRANGE FOR AN EARLY DEMONSTRATION New Location After May 27, Eighth and Hawthorne Avenue

Haynes Auto Sales Co.

Temporary Office, Crystal Ice & Storage Co., Seventh and E. Salmon. Phones—East 244, B 1244 J. G. Peck, Manager

QUALITY . . EFFICIENCY . . ECONOMY

Find Highest Development in HARRIS OILS

Unlike other oils, they are DESIGNED FOR, MADE FOR and ADAPTED TO automobile lubrication. Three Grades—Light, Medium and Heavy

Chanslor & Lyon Motor Supply Co.

627 WASHINGTON STREET
A 7633, Marshall 1018
Seattle Spokane San Francisco Fresno Los Angeles