

PORTLAND MAKING BUILDING RECORD

In 20 Days 667 Permits Are Issued Representing Total Cost of \$1,817,640.

THIRD PLACE IN SIGHT

Final Figures for Month May Aggregate \$3,000,000, With New York and Chicago Only in Lead for First Honors.

With Portland in fifth place among cities in the United States in building construction for the month of March, when the permits reached a total value of \$1,782,441, a much better showing will have been made in April and the indications are that New York and Chicago only will have larger totals for this month.

During the first 29 days of the present month there were issued 667 permits, with a total valuation of \$1,782,441. The record for the full month of April in 1911 was \$1,817,640, or only \$35,799 more than the total to date for this month.

Two big structures were authorized last week that were a big aid in fattening the total. One permit was for the new Oregon Hotel annex, which will occupy the quarter-block at the southwest corner of Seventh and Oak streets.

Residence construction is still keeping up a brisk pace. Permits for some fine homes were issued during the week, while hundreds of medium-priced dwellings were authorized.

Portland again is turning its attention to apartment-house construction. Several permits for apartments have been issued this month, ranging in cost from \$20,000 to \$30,000.

Although there were only five business days last week, the record was the largest for the entire year. There were 138 permits issued, representing a total cost of \$1,149,414.

PAVING WORK ADVANCES

Development of Altameda Park Nearly Completed.

Progress was made during the past week in hard surfacing the streets and driveways embraced in the large residential development in Altameda Park and Olmsted Park.

With the coming of warmer weather, house building is more of an important feature in the development of these splendid residence parks.

Anderson Bros. have plans for three handsome two-story dwellings and expect to begin construction within the next few days.

Gas, water and sewer laterals have been brought to each lot inside of the curb line. The completion of this work together with that of the street paving finishes the municipal improvements for this attractive district.

MERCHANT JUMPS INTO SEA

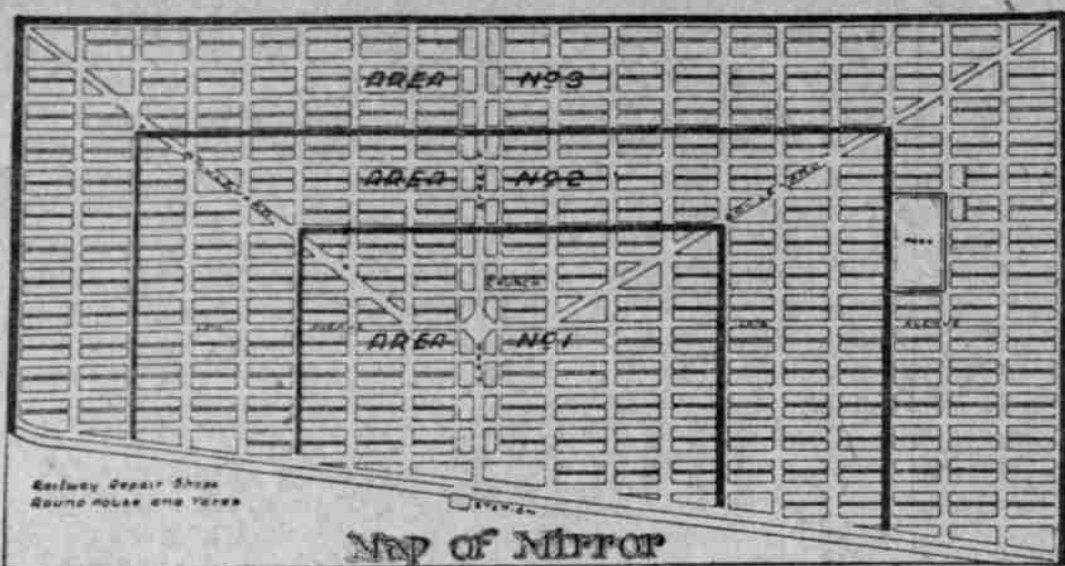
Rich Missourian Goes Over Side of Mauretania and Drowns.

NEW YORK, April 20.—The steamship Mauretania tonight struck the side of the sea last Sunday night at Stroughton Walker, a wealthy merchant of St. Joseph, Mo.

KELSO GETS NEW SCHOOLS

Work of Construction Is to Be Started Immediately.

KELSO, Wash., April 20.—(Special.)—Work will be begun at once on the two new grade schools, one in West Kelso, the other in South Kelso, for which the citizens voted \$30,000 of bonds recently.



MIRROR, ALBERTA A Town for Manufacturers, Merchants, Homeseekers and Investors

AN OPPORTUNITY—AND HOW TO GRASP IT

At the top of this advertisement, to the right, is a map showing the location of Mirror in relation to Mirror Beach and Buffalo Lake. To the left of this map is a map of Mirror with lines bounding areas numbers 1, 2 and 3.

NOTICE

As authorized agents of the Grand Trunk Pacific Railway, we sell original Grand Trunk Pacific townsite property only. In no way are we interested in subdivisions.

The Grand Trunk Pacific Railway Repair Shops, Round House and Switch Yards at Mirror, Alberta, are nearing completion. Stockyards are now being built. More than 25 Business Enterprises are already established.

If you want a factory site at low cost—cheap fuel and good transportation facilities—locate at Mirror.

If you are looking for a growing, going town for your business—Go to Mirror.

If you want a home in a beautiful, beautiful section of Sunny Alberta—Live in Mirror.

Where business enterprises and homeseekers go, property advances rapidly in value. If you want to invest—Buy Mirror property direct from the Grand Trunk Pacific Railway Company at Low Prices—Easy Terms—No Interest.

Your familiarity with the rapid growth of other Grand Trunk Pacific towns should make the opportunities Mirror offers stand out all the more plainly.

Western Canada Scene of Intense Activity. Government officials say a greater number will come during 1912. This explains why in Western Canada "It's Village Yesterday—Town Today—City Tomorrow."

Edith L. Burgess, principal. The science department probably will be in the hands of a young man from the Washington State College.

ers was unanimously adopted. The proposed change will divert Larrabee street on an angle through the block bounded by Larrabee, Pacific, Oregon and Adams streets.

committee of the City Council remonstrances against the proposed change of the direction of Larrabee street were overruled and the report of view-

ers was unanimously adopted. The proposed change will divert Larrabee street on an angle through the block bounded by Larrabee, Pacific, Oregon and Adams streets.

ers was unanimously adopted. The proposed change will divert Larrabee street on an angle through the block bounded by Larrabee, Pacific, Oregon and Adams streets.

ers was unanimously adopted. The proposed change will divert Larrabee street on an angle through the block bounded by Larrabee, Pacific, Oregon and Adams streets.

ers was unanimously adopted. The proposed change will divert Larrabee street on an angle through the block bounded by Larrabee, Pacific, Oregon and Adams streets.

ers was unanimously adopted. The proposed change will divert Larrabee street on an angle through the block bounded by Larrabee, Pacific, Oregon and Adams streets.

ers was unanimously adopted. The proposed change will divert Larrabee street on an angle through the block bounded by Larrabee, Pacific, Oregon and Adams streets.

ers was unanimously adopted. The proposed change will divert Larrabee street on an angle through the block bounded by Larrabee, Pacific, Oregon and Adams streets.

ers was unanimously adopted. The proposed change will divert Larrabee street on an angle through the block bounded by Larrabee, Pacific, Oregon and Adams streets.

ers was unanimously adopted. The proposed change will divert Larrabee street on an angle through the block bounded by Larrabee, Pacific, Oregon and Adams streets.

ers was unanimously adopted. The proposed change will divert Larrabee street on an angle through the block bounded by Larrabee, Pacific, Oregon and Adams streets.

ers was unanimously adopted. The proposed change will divert Larrabee street on an angle through the block bounded by Larrabee, Pacific, Oregon and Adams streets.

ers was unanimously adopted. The proposed change will divert Larrabee street on an angle through the block bounded by Larrabee, Pacific, Oregon and Adams streets.

ers was unanimously adopted. The proposed change will divert Larrabee street on an angle through the block bounded by Larrabee, Pacific, Oregon and Adams streets.

ers was unanimously adopted. The proposed change will divert Larrabee street on an angle through the block bounded by Larrabee, Pacific, Oregon and Adams streets.

ers was unanimously adopted. The proposed change will divert Larrabee street on an angle through the block bounded by Larrabee, Pacific, Oregon and Adams streets.

ers was unanimously adopted. The proposed change will divert Larrabee street on an angle through the block bounded by Larrabee, Pacific, Oregon and Adams streets.

ers was unanimously adopted. The proposed change will divert Larrabee street on an angle through the block bounded by Larrabee, Pacific, Oregon and Adams streets.

ers was unanimously adopted. The proposed change will divert Larrabee street on an angle through the block bounded by Larrabee, Pacific, Oregon and Adams streets.

ers was unanimously adopted. The proposed change will divert Larrabee street on an angle through the block bounded by Larrabee, Pacific, Oregon and Adams streets.

ers was unanimously adopted. The proposed change will divert Larrabee street on an angle through the block bounded by Larrabee, Pacific, Oregon and Adams streets.

ers was unanimously adopted. The proposed change will divert Larrabee street on an angle through the block bounded by Larrabee, Pacific, Oregon and Adams streets.

ers was unanimously adopted. The proposed change will divert Larrabee street on an angle through the block bounded by Larrabee, Pacific, Oregon and Adams streets.

ers was unanimously adopted. The proposed change will divert Larrabee street on an angle through the block bounded by Larrabee, Pacific, Oregon and Adams streets.

ers was unanimously adopted. The proposed change will divert Larrabee street on an angle through the block bounded by Larrabee, Pacific, Oregon and Adams streets.

ers was unanimously adopted. The proposed change will divert Larrabee street on an angle through the block bounded by Larrabee, Pacific, Oregon and Adams streets.

ers was unanimously adopted. The proposed change will divert Larrabee street on an angle through the block bounded by Larrabee, Pacific, Oregon and Adams streets.

ers was unanimously adopted. The proposed change will divert Larrabee street on an angle through the block bounded by Larrabee, Pacific, Oregon and Adams streets.

ers was unanimously adopted. The proposed change will divert Larrabee street on an angle through the block bounded by Larrabee, Pacific, Oregon and Adams streets.

ers was unanimously adopted. The proposed change will divert Larrabee street on an angle through the block bounded by Larrabee, Pacific, Oregon and Adams streets.

ers was unanimously adopted. The proposed change will divert Larrabee street on an angle through the block bounded by Larrabee, Pacific, Oregon and Adams streets.

ers was unanimously adopted. The proposed change will divert Larrabee street on an angle through the block bounded by Larrabee, Pacific, Oregon and Adams streets.

ers was unanimously adopted. The proposed change will divert Larrabee street on an angle through the block bounded by Larrabee, Pacific, Oregon and Adams streets.

ers was unanimously adopted. The proposed change will divert Larrabee street on an angle through the block bounded by Larrabee, Pacific, Oregon and Adams streets.

ers was unanimously adopted. The proposed change will divert Larrabee street on an angle through the block bounded by Larrabee, Pacific, Oregon and Adams streets.

ers was unanimously adopted. The proposed change will divert Larrabee street on an angle through the block bounded by Larrabee, Pacific, Oregon and Adams streets.

ers was unanimously adopted. The proposed change will divert Larrabee street on an angle through the block bounded by Larrabee, Pacific, Oregon and Adams streets.

ers was unanimously adopted. The proposed change will divert Larrabee street on an angle through the block bounded by Larrabee, Pacific, Oregon and Adams streets.

ers was unanimously adopted. The proposed change will divert Larrabee street on an angle through the block bounded by Larrabee, Pacific, Oregon and Adams streets.

ers was unanimously adopted. The proposed change will divert Larrabee street on an angle through the block bounded by Larrabee, Pacific, Oregon and Adams streets.

ers was unanimously adopted. The proposed change will divert Larrabee street on an angle through the block bounded by Larrabee, Pacific, Oregon and Adams streets.

ers was unanimously adopted. The proposed change will divert Larrabee street on an angle through the block bounded by Larrabee, Pacific, Oregon and Adams streets.

ers was unanimously adopted. The proposed change will divert Larrabee street on an angle through the block bounded by Larrabee, Pacific, Oregon and Adams streets.

ers was unanimously adopted. The proposed change will divert Larrabee street on an angle through the block bounded by Larrabee, Pacific, Oregon and Adams streets.

ers was unanimously adopted. The proposed change will divert Larrabee street on an angle through the block bounded by Larrabee, Pacific, Oregon and Adams streets.

ers was unanimously adopted. The proposed change will divert Larrabee street on an angle through the block bounded by Larrabee, Pacific, Oregon and Adams streets.

ers was unanimously adopted. The proposed change will divert Larrabee street on an angle through the block bounded by Larrabee, Pacific, Oregon and Adams streets.

ers was unanimously adopted. The proposed change will divert Larrabee street on an angle through the block bounded by Larrabee, Pacific, Oregon and Adams streets.

ers was unanimously adopted. The proposed change will divert Larrabee street on an angle through the block bounded by Larrabee, Pacific, Oregon and Adams streets.

ers was unanimously adopted. The proposed change will divert Larrabee street on an angle through the block bounded by Larrabee, Pacific, Oregon and Adams streets.

ers was unanimously adopted. The proposed change will divert Larrabee street on an angle through the block bounded by Larrabee, Pacific, Oregon and Adams streets.

ers was unanimously adopted. The proposed change will divert Larrabee street on an angle through the block bounded by Larrabee, Pacific, Oregon and Adams streets.

ers was unanimously adopted. The proposed change will divert Larrabee street on an angle through the block bounded by Larrabee, Pacific, Oregon and Adams streets.

ers was unanimously adopted. The proposed change will divert Larrabee street on an angle through the block bounded by Larrabee, Pacific, Oregon and Adams streets.

ers was unanimously adopted. The proposed change will divert Larrabee street on an angle through the block bounded by Larrabee, Pacific, Oregon and Adams streets.

ers was unanimously adopted. The proposed change will divert Larrabee street on an angle through the block bounded by Larrabee, Pacific, Oregon and Adams streets.

ers was unanimously adopted. The proposed change will divert Larrabee street on an angle through the block bounded by Larrabee, Pacific, Oregon and Adams streets.

ers was unanimously adopted. The proposed change will divert Larrabee street on an angle through the block bounded by Larrabee, Pacific, Oregon and Adams streets.

ers was unanimously adopted. The proposed change will divert Larrabee street on an angle through the block bounded by Larrabee, Pacific, Oregon and Adams streets.

ers was unanimously adopted. The proposed change will divert Larrabee street on an angle through the block bounded by Larrabee, Pacific, Oregon and Adams streets.

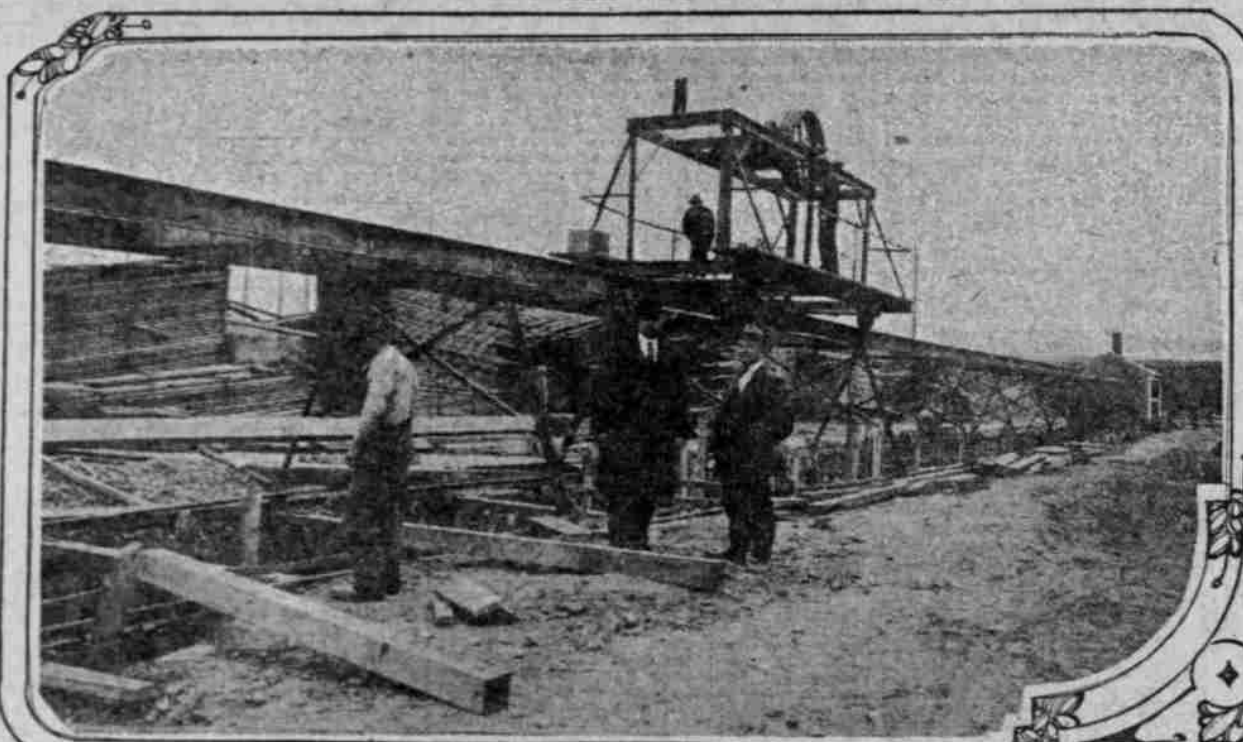
ers was unanimously adopted. The proposed change will divert Larrabee street on an angle through the block bounded by Larrabee, Pacific, Oregon and Adams streets.

ers was unanimously adopted. The proposed change will divert Larrabee street on an angle through the block bounded by Larrabee, Pacific, Oregon and Adams streets.

ers was unanimously adopted. The proposed change will divert Larrabee street on an angle through the block bounded by Larrabee, Pacific, Oregon and Adams streets.

ers was unanimously adopted. The proposed change will divert Larrabee street on an angle through the block bounded by Larrabee, Pacific, Oregon and Adams streets.

IMPROVEMENTS UNDER WAY ON THE EAST SIDE



Sewer at Foot of E. Stark St.

Larrabee Street Changes Carry.

At a meeting yesterday of the street

ers was unanimously adopted. The proposed change will divert Larrabee street on an angle through the block bounded by Larrabee, Pacific, Oregon and Adams streets.

ers was unanimously adopted. The proposed change will divert Larrabee street on an angle through the block bounded by Larrabee, Pacific, Oregon and Adams streets.

ers was unanimously adopted. The proposed change will divert Larrabee street on an angle through the block bounded by Larrabee, Pacific, Oregon and Adams streets.

PAVING IS RUSHED

Improvement Programme for Sellwood District Big.

COST EXCEEDS \$500,000

Many Fine Homes in Various Additions Under Construction—Better Car Service in Prospect—Fine Business Building Rises.

Assurance that the Portland Railway, Light & Power Company will relay its tracks on Milwaukie street to Bybee avenue at once, and not wait till the general franchise ordinance is passed might mean a long delay, and hence the street railway company decided to go on with its own improvements.

The Milwaukee street car tracks connect with Sellwood and also with the Eastmoreland branch. The paving of Milwaukee street, which at present is the only open street to Westmoreland street, will be a great boon to this fine, large section of the city.

In Westmoreland sewers are being laid in all the streets, preparatory to laying the hard-surface pavement, for which contracts have been let. The paving will cost about \$100,000. The Malden avenue street district, which is part of the improvement, has started at once. The cost of this improvement will be \$35,000, and will be the first hard-surface pavement to be laid in Sellwood.

Plans for a big trunk sewer under the south portion of Sellwood have been prepared. This sewer will drain Westmoreland, Eastmoreland and Sellwood. The programme for improvements in this district, including streets and sewers, for this year is a large and expensive one, and runs above \$500,000.

There is a substantial building movement under way through this district. The two-story pressed brick building for J. R. Strigle on East Thirteenth street, Sellwood, is nearing completion. It is one of the best and most attractive structures in this suburb.

The additions between Milwaukee street and the Willamette River are being built up with attractive homes. The Benedictine Heights Addition, which was formerly a vacant tract owned by the G. W. R. & N. has filled up rapidly, and is now one of the best-built residence additions of the South East Side.

The extension of Grand avenue from its present end at Woodward avenue to the north line of Manhattan Heights will be a great advantage. The extension follows the brink of the bluff above the Willamette River, and gives Grand avenue an outlet to the south. The credit of this improvement is due

W. J. Clemens, who has worked steadily for the past two years for the extension of East Glean street from the point where the assessment has been made, which amounts to \$5775.

Street Extension Assured.

E. Versteeg, A. A. Kaddery and John P. Schmeer are the viewers for the extension of East Glean street from East Twenty-eighth to East Twenty-sixth streets. This extension will be 60 feet wide. Several houses have been built on the part to be opened. When opened East Glean street will have connection with Sandy boulevard. About six lots will have to be appropriated for the extension.

Apartment-House to Rise.

Plans are being drawn for a three-story apartment-house to be built at the southwest corner of Hall and Tenth street for John Barbur. The building will be equipped with all modern conveniences and will contain two and three-room apartments. It will have a pressed brick exterior. The cost of construction will be about \$25,000. Clausen & Clausen are the architects.

Lot Sales Closed in Altameda.

The German Realty Company reports the following sales in Altameda the past 10 days: Lot 5, block 3, John Schumacher, \$750; lot 6, block 3, Carl and Otto Lotgren, \$750; lot 6, block 7, Erik Burman, \$750; lot 4, block 7, Earl Groblebe, \$750; lot 4, block 12, Antonio Truiano, \$450; lot 2, block 13, Francesco Reaso, \$550.

BIG SEWER UNDER WAY

CONCRETE TUNNEL AT RIVER IS SIX FEET IN DIAMETER.

Sewage System to Cover Big Area in Southeastern Part of City to Cost \$1,000,000.

The Consolidated Contract Company, which was awarded the contract to build the Willamette River ends of the East Stark-street and North Mount St. sewer, started work at the foot of East Stark street. A section of the big pipe is exposed at the foot of the street. It is six feet in diameter and is built of reinforced concrete and stone blocks on a concrete foundation. The upper part is oval in shape, while the bottom is flat. The bottom is composed of a foundation of concrete on the top of which are placed stone blocks also grouted in concrete. The walls of the concrete above the bottom are eight inches thick and are reinforced with steel bars. A tramway has been built above the trench and the excavated material is lifted by buckets and then carried back and dumped on the completed section of the sewer.

At present the company is tunneling under the street tracks between East Water street and Union avenue, there being tracks on all the streets north and south, and double tracks on East First and East Second. Excavating on East Stark started work at the foot of East Stark street. A section of the big pipe is exposed at the foot of the street. It is six feet in diameter and is built of reinforced concrete and stone blocks on a concrete foundation. The upper part is oval in shape, while the bottom is flat. The bottom is composed of a foundation of concrete on the top of which are placed stone blocks also grouted in concrete. The walls of the concrete above the bottom are eight inches thick and are reinforced with steel bars. A tramway has been built above the trench and the excavated material is lifted by buckets and then carried back and dumped on the completed section of the sewer.

Another contract will have to be let later for an extension of the same sewer system beyond East Forty-first street for the district eastward, to include Montavilla. The cost will finally run up to and above the \$1,000,000 mark before sewerage reaches a cantavilla. This sewer is separated from the Sullivan's Gulch district, which includes Rose City Park.

FEZ RETAKEN BY BATTLE

Heavy Losses Reported in Desperate Fighting by French.

PARIS, April 20.—Fez, the capital of Morocco, which had practically fallen into the hands of the riotous and mutinous Moorish soldiers, has been recaptured by the French troops numbering 2000, stationed here, after a desperate battle, in which a large number were killed and wounded. According to a wireless dispatch received from Fez at the Foreign Office this morning, order has been re-established.

Public to Be Protected.

COTTAGE GROVE, Or., April 20.—Every protection provided by law is to be given fruitgrowers this year by Fruit Inspector C. E. Stewart and he declares in unmistakable terms that the sale of wormy or scabby apples will not be permitted.

In New York during the first three months of the present year 418 persons were arrested for spitting in public places.

THE KEY TO SUCCESS

The Oregon Home Builders Builders of Homes. Officers & Directors: Thomas Prince, Acting President O. K. Jeffery, First Vice-President H. L. Keats, Second Vice-President M. Peterson, Third Vice-President W. A. King, Secretary-Treasurer H. V. Carrington, Auditor Franklin T. Griffith, Chief Counsel W. B. Shively, General Attorney E. H. Dodge C. J. Franklin

Our PROFIT-SHARING Investment Certificates are REAL MoneyMakers Send for Booklet Corbett Bldg., Portland, Oregon.

TILE For Floors, Bathrooms, Mantels, Kitchen and All Purposes. LARGE AND COMPLETE STOCK. FRED W. WAGNER, Main 5339, 263 Stark.