

SELLING WILL LEAD BOURNE BY ABOUT 8500 VOTES

TAFT WILL LOSE OREGON BY 7000

With Four-Fifths of Vote Reported Returns Give Selling Victory.

DEMOCRATS LIKE WILSON

Minority Party Decides to Name New Jersey Governor for Place—Harry Lane Has Best for Senator in Race Now.

(Continued From First Page.)

The upstate vote, as it came in yesterday, enabled Mickle to overtake Cottell and although his tentative plurality is small the general trend of returns indicate that it will not be reduced. The vote as reported follows: Mickle 13, 881; Cottell 11, 232; Lea 11, 241; Edwards 6, 952; Mickle's plurality 439.

For Railroad Commissioner it is indicated that Clyde B. Atchison will have a clear majority over his opponents. The vote now stands: Atchison 15, 967; Schulderman 7, 812; Stayton 7, 167; Atchison's plurality over Schulderman 8155.

Multnomah Wins for Wilson.

The Democratic returns show that had it not been for the substantial plurality given Woodrow Wilson in Multnomah County, Champ Clark would have obtained Oregon's indorsement as the party's candidate for President. The total vote for the state gives Wilson a smaller plurality than he obtained in Multnomah County, but late returns do not indicate that Clark can overtake his opponent.

Wilson's plurality in Multnomah County, with 14 precincts missing, is 1189. His plurality in the state is large, including Multnomah, is 820. The vote follows: Wilson, 6924; Clark, 5293; Harmon, 538.

For United States Senator on the Democratic ticket Harry Lane has a strong lead over Walter E. Pierce his leading opponent, and Sell Strong has almost a clear majority. The vote: Lane, 2642; Pierce, 2099; Coshov, 2604; Miller, 835. Lane's plurality, 2642.

Result is Presidential. Returns on the Democratic ticket for Representative in Congress from the Second District are meager and the result is problematical, although James H. Graham, of Baker County, has a small majority over Claude S. Covey, of Crook County, in the incomplete count. Graham has 1241 and Covey

1987, showing a lead for Graham of 374. In the vote for President on the Republican ticket, President Taft apparently has carried six counties. A feature of this fact is that two of the big state counties, where it might have been inferred Roosevelt's interest in the range would gain him votes, went for Taft. These are Crook and Harney. In addition President Taft has apparently won in Morrow, Polk, Sherman and Yamhill.

TAFT SECOND IN CLATSOP

Selling Leads Bourne by 150 in Unofficial Returns.

ASTORIA, Or., April 20.—(Special.)—Unofficial returns on the Republican ticket from all precincts in Clatsop County give the following result: Delegates to National convention—Ackerson 168, Applegate 26, Boyd 23, Bynon 74, Campbell 30, Carey 23, Coe 118, Frye 5, Hall 71, Harris 2, Huston 5, Jones 4, McCusker 75, Metschan 30, Minto 12, Patton 493, Smith 45, Swift 77. President—La Follette 1094, Roosevelt 632, Taft 463. Senator—Bourne 500, Lowell 162, Morton 60, Selling 849. Secretary of State—Fields 1463, Olcott 795. Food Commissioner—Cottel 282, Edwards 159, Lea 310, Mickle 287. Railroad Commissioner—Atchison 522, Schulderman 342, Stayton 196. Few returns are obtainable on the Democratic ticket, and the official count will have to be made before any definite information can be secured. The returns thus far show delegates to National Convention—Wise 101, balance scattered. President—Clark 72, Harmon 3, Wilson 44. Senator—Coshov 12, Lane 4, Pierce 68.

The county tickets nominated are as follows: Republican, Representative—A. A. Anderson and L. O. Belland. Commissioner—John Frye. Sheriff—E. M. Houghton. County Clerk—J. C. Clinton. Treasurer—W. A. Sherman. Surveyor—G. F. Parker. Coroner—J. A. Gilbaugh. Assessor—F. P. Lelinenweber. School Superintendent—O. H. Byland. Port of Astoria Commissioners—C. F. Lester, G. B. McLeod and G. Wingate. Democratic Representative—C. W. Mullins. Commissioner—G. H. Greer. Sheriff—J. V. Buras.

SELLING WINS IN CLACKAMAS

Roosevelt Gets 1164, La Follette 1098 and Taft 710.

OREGON CITY, Or., April 20.—(Special.)—Clackamas County, complete, follows: Republican delegates to National convention—Ackerson 620, Applegate 67, Boyd 108, Bynon 218, Campbell 158, Carey 122, Coe 288, Frye 11, Hall 206, Harris 14, Huston 18, Jones 18, McCusker 312, Metschan 27, Minto 29, Patton 4, Smith 183, Swift 74. President—La Follette 1094, Roosevelt 1164, Taft 710. United States Senator—Bourne 971, Lowell 383, Morton 197, Selling 1416.

OREGON'S REPUBLICAN CANDIDATE FOR UNITED STATES SENATE RECEIVES FLOOD OF CONGRATULATORY TELEGRAMS AND LETTERS.



BEN SELLING IN HIS CAMPAIGN HEADQUARTERS.

Complete returns received from 35 of the 39 precincts in Douglas County indicate that Selling has won over Bourne by a majority of at least 400 votes. A summary of the returns follows: President—La Follette 687, Roosevelt 209, Taft 885, Clark 267, Harmon 79, Wilson 206. Bourne 654, Lowell 155, Morton 140, Selling 1098, Coshov 375, Lane 166, Miller 24, Pierce 103, Hawley 1473, Fields 921, Olcott 994, Cottel 486, Edwards 208, Lea 311, Mickle 623, Campbell 1709, Harris 1562.

George W. Brown, candidate for District Attorney, carried Douglas County over C. S. Jackson by a majority of 100 votes. George Neuner defeated J. A. Buchanan for State Senator by a vote of 1050 to 859. Joseph Bridges and E. S. Nichols secured the nominations for Representatives. George Quine was nominated for Sheriff over D. J. Jarvis by a majority of 600 votes. It is impossible to obtain returns as to delegates to the National conventions, either Republican or Democratic, tonight.

KLAMATH HONORS ROOSEVELT

Selling, Sinnott and Olcott Also Lead Opponent. KLAMATH FALLS, Or., April 20.—(Special.)—Incomplete returns follow: Republican candidates: National delegates—Ackerson, 85; Applegate, 320; Boyd, 35; Bynon, 25; Campbell, 4; Carey, 2; Coe, 24; Frye, 1; Hall, 14; Harris, 2; Huston, 1; Jones, 2; McCusker, 15; Metschan, 5; Minto, 0; Patton, 0; Smith, 13; Swift, 5; Cottel, 255; Edwards, 147; Lea, 50; Mickle, 85. President—La Follette, 186; Roosevelt, 270; Taft, 209. Elector—McMahon, 386. Senator—Bourne, 213; Lowell, 71; Morton, 47; Selling, 312. Representative, Second District—Cochran, 123; Ellis, 152; Roosevelt, 43; Ruak, 10; Sinnott, 190. State Secretary—Fields, 224; Olcott, 244. Railroad Commissioner—Campbell, 469. Prosecuting Attorney—Irvine, 352; Kuykendall, 276. State Senator—Thompson, 516. Representative—Forbes, 164; Smith, 408.

Democratic candidates: National delegates—Bennett, 19; Burke, 3; Cole, 5; Fordson, 1; Godfrey, 10; Goss, 11; Holman, 4; Holmes, 2; Jewell, 9; Kad-king, 2; Maloney, 5; Moses, 1; Reynolds, 1; Sheehan, 1; Sherman, 70; Sisson, 2; Sweek, 6; Wilhelm, 0; Wise, 1. President—Clark 148; Harmon, 0; Wilson, 27. Electors—McLain, 70; Peterson, 79; Wall, 9; Watson, 35; Whitten, 5; Pierce, 26. Representative, Second District—Covey, 103; Graham, 49. For county offices, Republican nominations as indicated by the count to date are: Sheriff—C. C. Low, 263; R. S. Grigsby, 272; O. L. Carter, 237. Treasurer—A. J. Manning, 543; Antonio Castel, 255. Commissioner—John Hagelstein, 434; J. O. Hamaker, 369. Democratic nominations: Sheriff—Samuel L. Walker, 146; B. St. G. Bishop, 140. In other county offices there were no contests.

Fields, 246; Olcott, 126. Eakin, 500; Cottel, 100; Edwards, 60; Lea, 50; Mickle, 112; Atchison, 211; Schulderman, 150; Stayton, 60. Phelps, Circuit Judge, 210; Neal, District Attorney, 133; Steiwer, District Attorney, 187; Stanfield, Joint Representative, 213; Briggs, County Judge, 297; Hill, County Clerk, 363; Evans, County Sheriff, 328; Notson, County Superintendent, 384; Gilliam, County Treasurer, 357; Turner, County Surveyor, 338; Bates, County Commissioner, 178; Killikenny, County Commissioner, 186.

Democratic votes: Bennett, 47; Burk, 4; Cole, 1; Edmondson, 1; Godfrey, 0; Goss, 1; Holman, 1; Holmes, 0; Jewell, 0; Kad-king, 1; King, 2; Maloney, 25; Moses, 0; Reynolds, 1; Sheehan, 2; Sherman, 0; Stevenson, 1; Sweek, 0; Wilhelm, 0; Wise, 2. Clark, 67; Harmon, 3; Wilson, 29. McLain, 12; Peterson, 61; Wall, 9; Watson, 10; Whitten, 5; Coshov, 15; Lane, 27; Miller, 0; Pierce, 48; Covey, 46; Graham, 50; Ryan, 91; Anderson, 77; Patterson, County Judge, 100; Hayes, County Sheriff, 90; McElligott, County Commissioner, 78.

BOURNE IS SNOWED UNDER

Ben Selling Leading in Marion County by 2000 Votes. SALEM, Or., April 20.—(Special.)—With returns from 23 out of 51 precincts of Marion County complete, Theodor Roosevelt is still well in the lead over Taft, with La Follette third. Roosevelt has 1511 in the 33 precincts; Taft 1368, and La Follette 1107. Ben Selling is having a landslide over Bourne and his other competitors. Selling has 2224 votes to 175 for Bourne; 471 for Morton and 414 for Lowell.

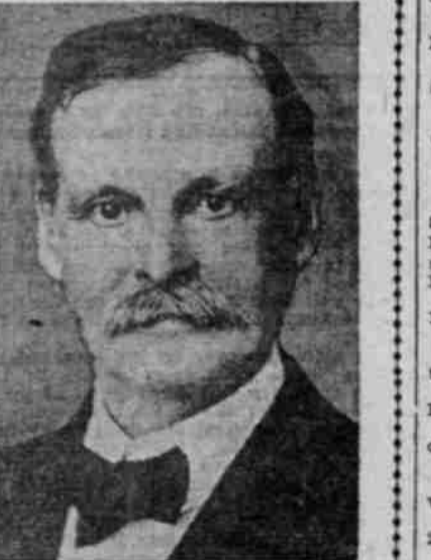
Ben Selling has an easy lead over Fields, with 1172 to 1915. It is an immense lead in this county in the race for Dairy and Food Commissioner, having 1208 votes to 981 for Mickle, 625 for Cottel and 245 for Edwards. Gale S. Hill, of Albany, is leading Walter C. Winslow, of Salem, as candidate for District Attorney in the Third Judicial District, the vote standing 1882 for Hill to 1857 for Winslow. Estimates were made today that Hill will carry the district by 600 or 700 votes. For Representatives in the Legislature on the face of the returns as they stand in the 33 precincts it appears that George W. Johnson, W. Carlton Smith, George W. Weeks, G. Heltzel and S. A. Hughes, who are running in the order named, will be nominated, Johnson being way ahead of the field.

Judge Bushey, present incumbent as County Judge, is administering a smashing defeat to L. J. Adams, his opponent, and William Esch, candidate for Sheriff, is far in the lead of his two opponents. Max Gehlar is evidently winning in the fight for County Clerk, while the race for Assessor is neck and neck between Albert H. Gille and B. F. West. The outlook for School Superintendent is in doubt. Walter M. Smith, present incumbent, and Clarence Phillips are assailing back and forth as the returns come in. On the Democratic ticket Woodrow Wilson crept up past Champ Clark, who was ahead earlier in the day. In

REPUBLICANS IN THE LEAD FOR STATE OFFICES IN PRIMARY ELECTION.



Ben W. Olcott, of Marion, Secretary of State.



Robert Eakin, of Union, Justice of Supreme Court.



John D. Mickle, of Washington County.



Clyde B. Atchison, Railroad Commissioner, Second District.



Thomas K. Campbell, of Lane, Railroad Commissioner, First District.

Secretary of State—Fields 1180, Olcott 1552. Dairy and Food Commissioner—Cottel 530, Edwards 242, Lea 546 Mickle 1542. District Attorney, Fifth Judicial District—Norblad 965, Tompau 1923. Joint Representative, Clackamas and Multnomah—Chattam 1698, Lofgren 855. C. Schuebel, F. M. Gill and Gustav Schneider were nominated for Representatives in the State Legislature. The following county officers were nominated by the Republicans. Commissioners, W. H. Mattson, Sheriff, E. C. Hackett; Clark, W. L. Mulvey; Assessor, James F. Nelson; Recorder, L. E. Williams; Treasurer, J. A. Tutts; School Superintendent, T. J. GARY; Coroner, William J. Wilson; Surveyor, D. T. Mel-drum; Justice of the Peace, Oregon City District, W. W. H. Samson; Constable, D. E. Frost. Delegates to National convention—Bennett 321, Burke 14, Cole 29, Edmondson 8, Godfrey 12, Goss 5, H. H. man 42, Holmes 16, Jewell 8, Kuddery 24, King 35, Maloney 17, Moses 6, Reynolds 1, Sheehan 15, Stevenson 39, Sweek 26, Wilhelm 44, Wise 32. President—Clark 291, Harmon 42, Wilson 359. Presidential Electors—McLain 119,

Peterson 83, Wall 105, Watson 255, Whitten 4. United States Senator—Coshov 84, Lane 461, Pierce 187.

SELLING STRONG IN LANE

65 Out of 84 Precincts Give Roosevelt 1074, Taft 758.

EUGENE, Or., April 20.—(Special.)—Sixty-five out of the 84 precincts in Lane County, with probably 200 votes still missing, give the following to Republican candidates: President—La Follette 579, Roosevelt 1074, Taft 758. Elector—McMahon 1599. Senator Bourne 375, Lowell 316, Morton 188, Selling 13851. Representative, Second District—Hawley 2059. Secretary of State—Fields 1463, Olcott 795. Supreme Judge—Eakin 1407. Dairy Commissioner—Cottel 531, Edwards 286, Lea 473, Mickle 754. Railroad Commissioner—Campbell 2104. Contest for third place on the Republican legislative ticket is close between M. V. Parsons, of Eugene, and I. J. Cushman, of Acme, with Parsons slightly in the lead. With five candidates in the field for Commissioner, the results are in doubt, with Price, present incumbent, Hawley and Bennett bunched. Otherwise the Republican county ticket will be: Circuit Judge, L. T. Harris; Prosecuting Attorney, E. E. Bryson; County Clerk, Stacy M. Russell; Sheriff, R. S. Bryson; Treasurer, S. W. Taylor; Assessor, B. F. Keeney; School Superintendent, H. C. Baughman; Surveyor, C. M. Collier; Coroner, W. T. Gordon.

SELLING CARRIES HOOD RIVER

Roosevelt Leads Presidential Race, La Follette Close Second.

HOOD RIVER, Or., April 20.—(Special.)—Complete unofficial returns for Hood River County follow: Republican Presidency—La Follette, 139; Taft, 575; Roosevelt, 293. Senatorial, United States—Bourne, 200; Lowell, 139; Selling, 426; Morton, 77. Representative, Second District—Cochran, 123; Ellis, 282; Roosevelt, 36; Ruak, 193; Sinnott, 265. Secretary of State—Fields, 351; Olcott, 253. Dairy and Food Commissioner—Cottel, 253; Edwards, 72; Lea, 127; Mickle, 216. Railroad Commissioner—Atchison, 450; Schulderman, 88; Stayton, 146. District Attorney—Bell, 169; Butler, 60; Smith, 492. State Senator—Butler, 374; Cooper, 26. State Representative—Anderson, 135; Bredie, 72; Moores, 58; Schmelzer, 493; Stramahan, 473. County Commissioner—Friday, 276; Putnam, 331; Wishart, 191. Sheriff—Frank Chandler, 196; Thomas F. Johnson, 416. County Surveyor—Luis A. Henderson, 276; Murray Kay, 469. Democratic returns are incomplete. Wilson, according to indications, has 23 of 23 Democratic votes cast. Lane, with 77 votes, leads in the Senatorial race.

SELLING LEADS, THREE TO ONE

Washington County Gives Bourne Only 566 Votes.

HILLSBORO, Or., April 20.—(Special.)—Figures on the total Presidential vote in Washington County are unobtainable but Roosevelt will carry the county by a plurality of at least 150 and it may go over 200. La Follette is third, but is giving Taft a fairly close run. Tally sheets are locked from the out-

side precincts, and it is impossible to get a line on polling results. Unofficial county returns give the following results, and the official count is not expected to make any change: Selling 1445, Bourne 566, Fields 1173, 795.

SELLING 610 AHEAD IN LINN

Roosevelt Leads, Taft Second and La Follette Third.

ALBANY, Or., April 20.—(Special.)—Complete returns of the Republican vote in the 24 precincts of Linn County give: President—La Follette 433, Roosevelt 817, Taft 591. Senator—Bourne 413, Lowell 199, Morton 128, Selling 1023. Secretary of State—Fields 805, Olcott 876. Dairy and Food Commissioner—Cottel 302, Edwards 127, Lea 477, Mickle 511. District Attorney, Third Judicial District—Gale & Hill 1115, W. C. Winslow 609. Representatives from Linn County (three to nominate)—F. H. Porter, of Halsey, 1035; Charles Childs, of Brownsville, 940; L. G. Lewelling, of Albany, 925; J. B. Springer, of Holley, 810; M. J. Simpson, of Lebanon, 503. Only 25 precincts have reported the vote on delegates to the Republican National convention, totals thus far received being as follows: Ackerson 329, Applegate 22, Boyd 68, Bynon 128, Campbell 35, Carey 37, Coe 266, Frye 18, Hall 106, Harris 21, Huston 30, Jones 5, McCusker 118, Metschan 30, Minto 9, Patton 9, Smith 173, Swift 26. Democratic returns are yet far from complete. Sixteen out of 34 precincts give for President: Clark 240, Harmon 21, Wilson 229. Senator—Coshov 72, Lane 166, Miller 168, Pierce 24. Returns are so scattering on delegates to the National convention and Presidential electors that no figures will be available until the official count, though it is known that Victor F. Moses is far in the lead in the vote for delegate. For county offices the Republicans have nominated D. B. McKnight for County Judge; D. H. Bodine, for Sheriff; W. L. Marks, for County Clerk; Grant Fremam, for County Recorder; E. L. Fisher, for Assessor; W. W. Francis, for Treasurer; J. W. Miller, for School Superintendent; Alfred L. Geddes, for Surveyor; William Formiller, for Coroner, and T. J. Butler, for Commissioner. The Democrats have nominated H. M. Palmer, for County Judge; D. S. Smith, for Sheriff; B. M. Miller, for Recorder; D. W. Rumbaugh, for Treasurer, and W. L. Jackson, for School Superintendent. For Representative, County Clerk, Assessor, Surveyor, Coroner and Commissioner there were no candidates on the Democratic ballot and so many names were written in that it will take the official count to tell who is nominated. Returns thus far received indicate that C. L. Shaw, of Albany, and J. M. Ripport, of Harrisburg, have been named as two of the three Democratic candidates for the Legislature. Early returns also indicate that for some of the other offices the successful Republican candidates also have received the Democratic nominations.



N. J. Sinnott, of Wasco County, Republican Nominee for Congress in Second District.

Olcott 1119, Cottel 399, Edwards 106, Lea 329, Mickle 1454. Tongue, District Attorney, 1531; Norblad 345. Senator, 24th District—W. H. Holds, 1590; Botts 836. Legislative and County—Dr. W. D. Wood, present incumbent, elected Senator over H. T. Bagley, Mayor of Hillsboro, by 933 to 940; Fisher, of Beaverton, received 513. Representatives—John A. Chapman, succeeding himself, 1363; Virgil Massey 1346, S. A. D. Meek, son of late Colonel Joseph Meek, 1093; L. M. Hesse 874, J. E. Zimmerman 899, the first three being nominated. County Judge—Ressner 1222, Goodin 1186. County Commissioner—McClaran, succeeding himself, 1171; Mattson 955. Sheriff—J. C. Applegate 1256, Fred E. Cornelius 894, Bedford Laughlin 300, William McQuill 175. County Clerk—E. C. Luce 1692, Ball 795. E. L. Perkins, for Recorder; E. E. Sappington, Treasurer; George McGee, Surveyor; Max Crandall, Assessor; E. C. Brown, Coroner, and B. W. Barnes School Superintendent were nominated without opposition.

County Judge—Ressner 1222, Goodin 1186. County Commissioner—McClaran, succeeding himself, 1171; Mattson 955. Sheriff—J. C. Applegate 1256, Fred E. Cornelius 894, Bedford Laughlin 300, William McQuill 175. County Clerk—E. C. Luce 1692, Ball 795. E. L. Perkins, for Recorder; E. E. Sappington, Treasurer; George McGee, Surveyor; Max Crandall, Assessor; E. C. Brown, Coroner, and B. W. Barnes School Superintendent were nominated without opposition.

County Judge—Ressner 1222, Goodin 1186. County Commissioner—McClaran, succeeding himself, 1171; Mattson 955. Sheriff—J. C. Applegate 1256, Fred E. Cornelius 894, Bedford Laughlin 300, William McQuill 175. County Clerk—E. C. Luce 1692, Ball 795. E. L. Perkins, for Recorder; E. E. Sappington, Treasurer; George McGee, Surveyor; Max Crandall, Assessor; E. C. Brown, Coroner, and B. W. Barnes School Superintendent were nominated without opposition.

County Judge—Ressner 1222, Goodin 1186. County Commissioner—McClaran, succeeding himself, 1171; Mattson 955. Sheriff—J. C. Applegate 1256, Fred E. Cornelius 894, Bedford Laughlin 300, William McQuill 175. County Clerk—E. C. Luce 1692, Ball 795. E. L. Perkins, for Recorder; E. E. Sappington, Treasurer; George McGee, Surveyor; Max Crandall, Assessor; E. C. Brown, Coroner, and B. W. Barnes School Superintendent were nominated without opposition.

County Judge—Ressner 1222, Goodin 1186. County Commissioner—McClaran, succeeding himself, 1171; Mattson 955. Sheriff—J. C. Applegate 1256, Fred E. Cornelius 894, Bedford Laughlin 300, William McQuill 175. County Clerk—E. C. Luce 1692, Ball 795. E. L. Perkins, for Recorder; E. E. Sappington, Treasurer; George McGee, Surveyor; Max Crandall, Assessor; E. C. Brown, Coroner, and B. W. Barnes School Superintendent were nominated without opposition.

County Judge—Ressner 1222, Goodin 1186. County Commissioner—McClaran, succeeding himself, 1171; Mattson 955. Sheriff—J. C. Applegate 1256, Fred E. Cornelius 894, Bedford Laughlin 300, William McQuill 175. County Clerk—E. C. Luce 1692, Ball 795. E. L. Perkins, for Recorder; E. E. Sappington, Treasurer; George McGee, Surveyor; Max Crandall, Assessor; E. C. Brown, Coroner, and B. W. Barnes School Superintendent were nominated without opposition.

County Judge—Ressner 1222, Goodin 1186. County Commissioner—McClaran, succeeding himself, 1171; Mattson 955. Sheriff—J. C. Applegate 1256, Fred E. Cornelius 894, Bedford Laughlin 300, William McQuill 175. County Clerk—E. C. Luce 1692, Ball 795. E. L. Perkins, for Recorder; E. E. Sappington, Treasurer; George McGee, Surveyor; Max Crandall, Assessor; E. C. Brown, Coroner, and B. W. Barnes School Superintendent were nominated without opposition.

County Judge—Ressner 1222, Goodin 1186. County Commissioner—McClaran, succeeding himself, 1171; Mattson 955. Sheriff—J. C. Applegate 1256, Fred E. Cornelius 894, Bedford Laughlin 300, William McQuill 175. County Clerk—E. C. Luce 1692, Ball 795. E. L. Perkins, for Recorder; E. E. Sappington, Treasurer; George McGee, Surveyor; Max Crandall, Assessor; E. C. Brown, Coroner, and B. W. Barnes School Superintendent were nominated without opposition.

County Judge—Ressner 1222, Goodin 1186. County Commissioner—McClaran, succeeding himself, 1171; Mattson 955. Sheriff—J. C. Applegate 1256, Fred E. Cornelius 894, Bedford Laughlin 300, William McQuill 175. County Clerk—E. C. Luce 1692, Ball 795. E. L. Perkins, for Recorder; E. E. Sappington, Treasurer; George McGee, Surveyor; Max Crandall, Assessor; E. C. Brown, Coroner, and B. W. Barnes School Superintendent were nominated without opposition.

County Judge—Ressner 1222, Goodin 1186. County Commissioner—McClaran, succeeding himself, 1171; Mattson 955. Sheriff—J. C. Applegate 1256, Fred E. Cornelius 894, Bedford Laughlin 300, William McQuill 175. County Clerk—E. C. Luce 1692, Ball 795. E. L. Perkins, for Recorder; E. E. Sappington, Treasurer; George McGee, Surveyor; Max Crandall, Assessor; E. C. Brown, Coroner, and B. W. Barnes School Superintendent were nominated without opposition.

County Judge—Ressner 1222, Goodin 1186. County Commissioner—McClaran, succeeding himself, 1171; Mattson 955. Sheriff—J. C. Applegate 1256, Fred E. Cornelius 894, Bedford Laughlin 300, William McQuill 175. County Clerk—E. C. Luce 1692, Ball 795. E. L. Perkins, for Recorder; E. E. Sappington, Treasurer; George McGee, Surveyor; Max Crandall, Assessor; E. C. Brown, Coroner, and B. W. Barnes School Superintendent were nominated without opposition.

County Judge—Ressner 1222, Goodin 1186. County Commissioner—McClaran, succeeding himself, 1171; Mattson 955. Sheriff—J. C. Applegate 1256, Fred E. Cornelius 894, Bedford Laughlin 300, William McQuill 175. County Clerk—E. C. Luce 1692, Ball 795. E. L. Perkins, for Recorder; E. E. Sappington, Treasurer; George McGee, Surveyor; Max Crandall, Assessor; E. C. Brown, Coroner, and B. W. Barnes School Superintendent were nominated without opposition.

County Judge—Ressner 1222, Goodin 1186. County Commissioner—McClaran, succeeding himself, 1171; Mattson 955. Sheriff—J. C. Applegate 1256, Fred E. Cornelius 894, Bedford Laughlin 300, William McQuill 175. County Clerk—E. C. Luce 1692, Ball 795. E. L. Perkins, for Recorder; E. E. Sappington, Treasurer; George McGee, Surveyor; Max Crandall, Assessor; E. C. Brown, Coroner, and B. W. Barnes School Superintendent were nominated without opposition.

County Judge—Ressner 1222, Goodin 1186. County Commissioner—McClaran, succeeding himself, 1171; Mattson 955. Sheriff—J. C. Applegate 1256, Fred E. Cornelius 894, Bedford Laughlin 300, William McQuill 175. County Clerk—E. C. Luce 1692, Ball 795. E. L. Perkins, for Recorder; E. E. Sappington, Treasurer; George McGee, Surveyor; Max Crandall, Assessor; E. C. Brown, Coroner, and B. W. Barnes School Superintendent were nominated without opposition.

County Judge—Ressner 1222, Goodin 1186. County Commissioner—McClaran, succeeding himself, 1171; Mattson 955. Sheriff—J. C. Applegate 1256, Fred E. Cornelius 894, Bedford Laughlin 300, William McQuill 175. County Clerk—E. C. Luce 1692, Ball 795. E. L. Perkins, for Recorder; E. E. Sappington, Treasurer; George McGee, Surveyor; Max Crandall, Assessor; E. C. Brown, Coroner, and B. W. Barnes School Superintendent were nominated without opposition.

County Judge—Ressner 1222, Goodin 1186. County Commissioner—McClaran, succeeding himself, 1171; Mattson 955. Sheriff—J. C. Applegate 1256, Fred E. Cornelius 894, Bedford Laughlin 300, William McQuill 175. County Clerk—E. C. Luce 1692, Ball 795. E. L. Perkins, for Recorder; E. E. Sappington, Treasurer; George McGee, Surveyor; Max Crandall, Assessor; E. C. Brown, Coroner, and B. W. Barnes School Superintendent were nominated without opposition.

County Judge—Ressner 1222, Goodin 1186. County Commissioner—McClaran, succeeding himself, 1171; Mattson 955. Sheriff—J. C. Applegate 1256, Fred E. Cornelius 894, Bedford Laughlin 300, William McQuill 175. County Clerk—E. C. Luce 1692, Ball 795. E. L. Perkins, for Recorder; E. E. Sappington, Treasurer; George McGee, Surveyor; Max Crandall, Assessor; E. C. Brown, Coroner, and B. W. Barnes School Superintendent were nominated without opposition.

County Judge—Ressner 1222, Goodin 1186. County Commissioner—McClaran, succeeding himself, 1171; Mattson 955. Sheriff—J. C. Applegate 1256, Fred E. Cornelius 894, Bedford Laughlin 300, William McQuill 175. County Clerk—E. C. Luce 1692, Ball 795. E. L. Perkins, for Recorder; E. E. Sappington, Treasurer; George McGee, Surveyor; Max Crandall, Assessor; E. C. Brown, Coroner, and B. W. Barnes School Superintendent were nominated without opposition.

County Judge—Ressner 1222, Goodin 1186. County Commissioner—McClaran, succeeding himself, 1171; Mattson 955. Sheriff—J. C. Applegate 1256, Fred E. Cornelius 894, Bedford Laughlin 300, William McQuill 175. County Clerk—E. C. Luce 1692, Ball 795. E. L. Perkins, for Recorder; E. E. Sappington, Treasurer; George McGee, Surveyor; Max Crandall, Assessor; E. C. Brown, Coroner, and B. W. Barnes School Superintendent were nominated without opposition.

County Judge—Ressner 1222, Goodin 1186. County Commissioner—McClaran, succeeding himself, 1171; Mattson 955. Sheriff—J. C. Applegate 1256, Fred E. Cornelius 894, Bedford Laughlin 300, William McQuill 175. County Clerk—E. C. Luce 1692, Ball 795. E. L. Perkins, for Recorder; E. E. Sappington, Treasurer; George McGee, Surveyor; Max Crandall, Assessor; E. C. Brown, Coroner, and B. W. Barnes School Superintendent were nominated without opposition.

County Judge—Ressner 1222, Goodin 1186. County Commissioner—McClaran, succeeding himself, 1171; Mattson 955. Sheriff—J. C. Applegate 1256, Fred E. Cornelius 894, Bedford Laughlin 300, William McQuill 175. County Clerk—E. C. Luce 1692, Ball 795. E. L. Perkins, for Recorder; E. E. Sappington, Treasurer; George McGee, Surveyor; Max Crandall, Assessor; E. C. Brown, Coroner, and B. W. Barnes School Superintendent were nominated without opposition.

County Judge—Ressner 1222, Goodin 1186. County Commissioner—McClaran, succeeding himself, 1171; Mattson 955. Sheriff—J. C. Applegate 1