

SAN FRANCISCO BALLPLAYERS ARE TAKEN ABOUT CITY IN E. M. F. CARS

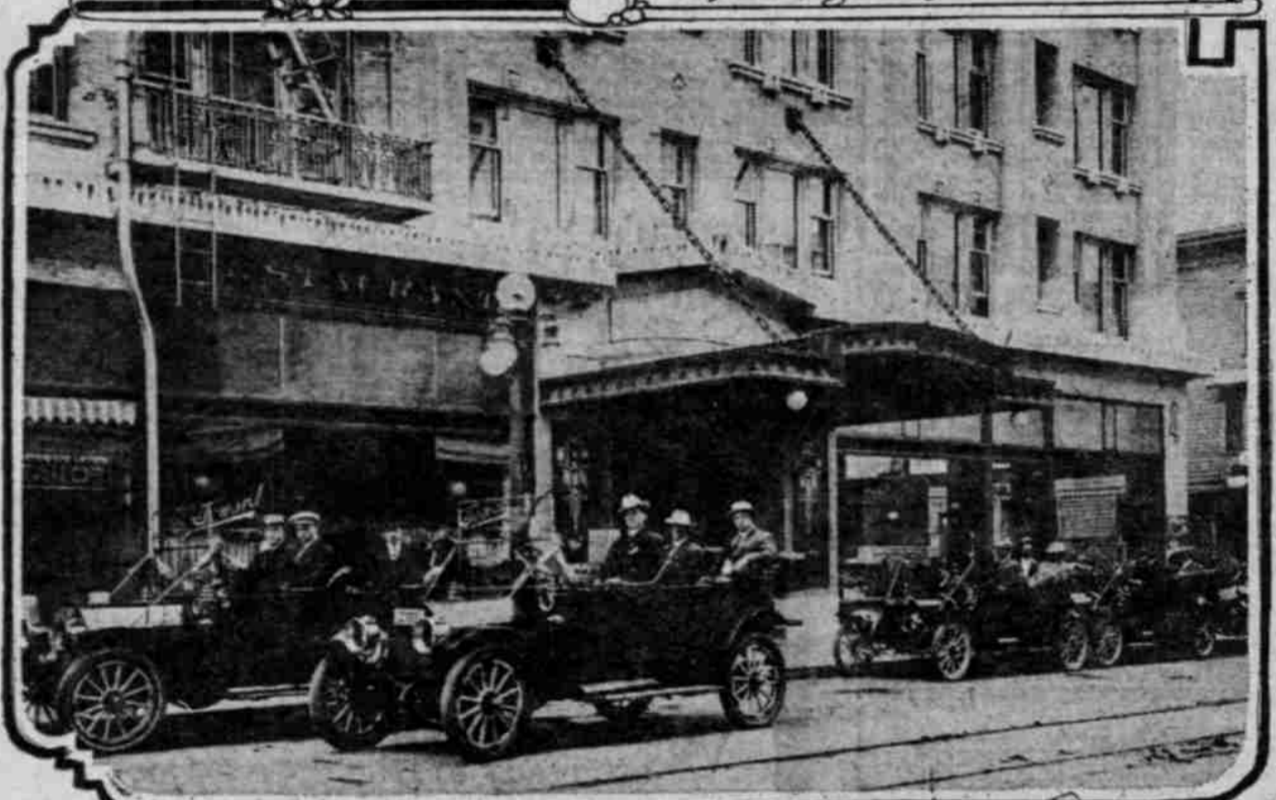
Automobile Salesmen Make Dicker Whereby They Get Chance to See Opening Game, and in Return Visiting Players Are Whisked Off to Roadhouses for Dinner.



Manager Long and Owner of the Seals Going to the Opening Game.



The Seals on Their Way to the Park on Opening Day.



San Francisco Team Ready for Their First Trip to New Park.

SAN FRANCISCO SEALS IN E-M-F CARS.

That baseball is nearly as important a subject as automobiles to the average motor-car salesman was shown to be a fact Tuesday, when the sales force of the Portland branch of the Studebaker Corporation made a deal with the San Francisco club to take them about town and give them a ride after the game, if in return the salesmen could witness the match. While they had a good time with the San Francisco "bunch," nevertheless they all rooted for the home team. After giving the visitors a ride about the business section of the town, they took them out to ball grounds. After the game the whole bunch shot out the Linnton road for a short spin, returning to town about 6 o'clock.

OLD RULES RETAINED

BASKETBALL COMMITTEE SAYS CHANGES ARE GOOD.

Resolution Passed Asking Colleges to Play as Legislated and Test Game Next Season.

NEW YORK, April 20.—(Special.)—College basketball will differ next year from the game as played in the season recently ended. The college basketball rules committee, analyzing complaints received against the rules, find that in the main they were from colleges which did not play the rules as legislated, and the tenor at a recent conference was, "Give the rules a chance."

A conspicuous offender in this respect was the Intercollegiate League, as was freely admitted by the Eastern members, and as a result the rules committee passed a resolution requesting that the Intercollegiate League play the rules as legislated without exceptions thereto in the future.

Such changes as were made in the rules were constructive and tended toward faster playing, less roughness and a better game from the viewpoint of the spectator.

A change which tends toward faster play was that which gives the player but 18 seconds for a free try for the basket after the referee has placed the ball on the foul mark. This will eliminate much killing of time by the team in the lead and the consequent slowing of the game from the spectator's point of view.

The two-minute period in the middle of the first half and in the middle of the second half was abolished. The out of bounds rule was cleared up in the case of several exceptions to

the general rule, and the fundamental of the out of bounds rule in the college game was defined, the ball going to the nearest eligible player.

The rules regarding holding and blocking were cleared to some extent, and the committee is laying plans to instruct officials to tighten up on holding and blocking rules, and thus make the game more of an offensive than a defensive one.

It was the opinion of the committee that the dribble is too good a play to lose, but that the legitimate place for the dribble is where a man has a short distance to go. Under the present ruling it is possible for a player to dribble a few feet to get an advantageous shot or pass, and therefore this rule remains the same as last year.

TWO NEW MODELS RECEIVED

Howard Automobile Co. Shows Handsome Touring Cars.

The Howard Automobile Company received this week two new models of the Buick line for the season of 1912. The most striking model is a 40 horsepower touring car in a handsome shade of gray.

The other model received is a classy-looking four-passenger, 30 horsepower touring car, which the company is showing at its showroom in both gray and wine-colored bodies.

New Design Helps Driver.

One troublesome problem of design forced upon motor car makers by the adoption of fore-door bodies, with the drive inside, was to supply plenty of room for the operation of the various levers and to relieve the driver of the discomfort of a cramped position. Nowhere has this difficulty been overcome more completely than in the 1912 cars of the Peerless Motor Car Company. All the superstructures have been exceptionally wide from the dash through to the rear of the car. They extend over the chassis frame fully six inches on either side.

OLYMPIC GAMES COSTLY

TICKETS FOR TWO WEEKS' ADMISION TO STADIUM \$54.

Hotel Accommodations Also Expected to Go Skyward When Crowd of Visitors Arrives.

NEW YORK, April 20.—American visitors to Stockholm who intend to witness the Olympic games had better be provided with a stout war, for if the preparations give the least sign of what is going to happen during the two weeks at the stadium the necessities of life and other unavoidable accommodations will fetch a handsome figure. To begin, with admission tickets for the two weeks will cost \$54, or about 200 kroner in Swedish money, that is, should the tourist want to be seated in any sort of a decent section. There will be slightly cheaper seats, but then the sightseer will have to be contented with a chair near the entrance or away on the top row.

Had the Stockholm stadium a pitch to it like the one at Athens a spectator would be not so badly off, but the Swedish structure is only about half as high, consequently the back seat occupants will have to take their chances on a partial glimpse of the arena. This expenditure of \$54 covers only the events to be held in the stadium, that is, all the athletic contests and the Marathon race, which will be held around Lake Malar. Should anybody care to see such sports as rowing, football, fencing, swimming and the equine competitions, extra admissions will be necessary for these events. On a rough calculation, about \$90 must be

WARREN

Beats 'Em All

From any point of view, for the price, there are none better than the

WARREN CARS

Prices \$1350 to \$1850

For durability, ease of riding, simplicity of operation, the Warren excels. We welcome an opportunity to substantiate these statements and demonstrate the efficiency of this car.

Guaranteed for Life.

New Shipment Received This Week.

Portland-Detroit Auto Co.

J. E. MAXON, Mgr.

Fourteenth and Couch Streets

Phones: Marshall 1565, A 2103

spent on admissions if one intends to take in all the sports.

Another important point to be considered by the intending tourist is the hotel accommodation, and to judge from inquiries that have been made, from New York recently all the big hotels have been pretty well booked even now, and it is about three months ahead of the opening of the games. Residents of the town, knowing that hotels will not be able to hold the visitors, have formed a boarding house trust with headquarters where applications may be made for rooms. Even though these rooms may be in private houses and other places, they will not be occupied at cheap rates, a fact which is forcibly illustrated by a story told by a man who has often visited Stockholm and who has laid plans to be there during the games. On his previous visits he always stayed in a private boarding house near the Pension at Ironbanegatin, the cost of his room being three kroner a day without meals. In order to be early in the field, as he thought, the prospective tourist wrote to know if he could have the same room during the first three weeks of July. He received answer that he could, but that the tariff would be 18 kroner a day. This was before there was any talk of the boarding house trust and the man engaged the room sooner than run the chance of being left out in the street.

Investigate the proposed racemast on the Tacoma prairie, with a view to entering both the Buick and National cars, both lines of which are represented in the Pacific Northwest by the Howard Company.

New Safety Device Is Out.

Safety in some models for 1912, which are being announced, is greatly increased by the irreversible steering gear. It prevents any change of angle in the front wheels unless the impulse comes from the steering wheel. This means that no matter what the speed of the car, no road obstacle can deflect it from its course. A stone in the road or a hole that is more severe on one side than the other is always a serious thing to encounter unless this device is used.

CLUB PROPRIETOR FINED

Young Girls Become Intoxicated at Resort in Sellwood.

For operating a "club" in Sellwood for the alleged purpose of evading the city liquor ordinance, B. T. Hentze, said to be the possessor of a fortune in six figures, was fined \$100 in Municipal Court yesterday. The testimony showed that at the "Bohemian Club," near the crematorium in Sellwood, young girls were made drunk with liquor served on Sunday. Otto Sandkamp, keeping a saloon at Twenty-fourth and Thurman streets, is involved in the charges, with two others, who took three young girls to the club last Sunday. It is alleged that an automobile was loaded with beer and wine at Sandkamp's saloon, after which they proceeded to the club, where a dance was in progress. One of the girls was 15 years old. She came from her home in Washington to undergo medical treatment.

Mount Angel to Play Woodburn.

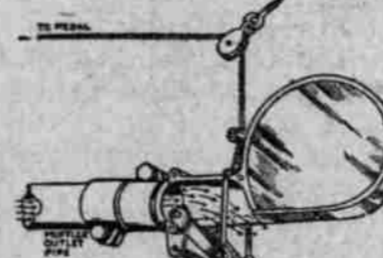
MOUNT ANGEL, Or., April 20.—(Special.)—The Mount Angel Athletic Club baseball team will play its first game away from home this season at Woodburn Sunday with the Woodburn Athletic Club nine. Mount Angel was defeated by Woodburn in the game played here recently. Scherback may not be able to pitch for Mount Angel, because of an injured hand, in which case Yarrow will pitch.

Student Candidates Named.

WILLAMETTE UNIVERSITY, Salem, Or., April 20.—(Special.)—At a mass

Obey the Law! and Clear the Crossways With a Jericho!

Jericho ONE TONE **Horn**
Jubilee CHIME TONE **Horn**
The Signal of a Gentleman—Warns without Offense



City after city is enacting ordinances requiring automobiles to be equipped with horns that shall give instant, effective warning, yet shall not annoy or confuse persons in the street by nerve-racking, barbarous sounds.

THE JERICHO IS THE PERFECT HORN

It is superior to bulb horns because it is equally effective in the crowded city street or on winding country roads. It is superior to electrical horns because there is not a penny of expense for batteries or maintenance. It is superior to every other exhaust horn because it never clogs.

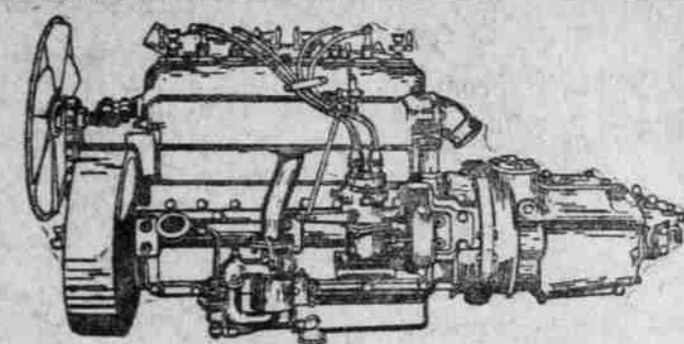
Any Motor Car Agency, accessory dealer or garage will sell and put on a Jericho or Jubilee and the entire cost will be less than \$10

THE RANDALL-FAICHNEY COMPANY, Boston, Mass.

"Your Money Back" Tire Guarantee!

Pennsylvania Vacuum Cup Tires will not skid in any direction and are guaranteed for 4000 miles' actual service. They carry the most liberal guarantee of any tires ever sold.

A. G. WINTERS CO., Agents
67 6TH ST., BETWEEN OAK AND PINE
The Best Place to Buy Auto Supplies, Hardware, and to Have Tires and Tubes Repaired.



Bring Any Engine Expert and Let Him Be Judge of the Paige Power Plant

THIS is an open invitation to every prospective purchaser of an automobile. We don't ask you to come here to be sold a Paige Car. We want you to come and study the Paige, and if you are not an expert yourself we would be glad to have you bring an expert with you.

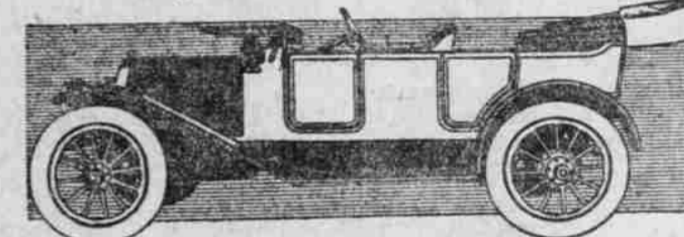
Pick out a man who knows motors. That's the kind of a man we like best to show the Paige Car to. The average prospective purchaser, being experienced in automobile sales methods, may take our statements about the construction of the Paige motor "with a grain of salt." The engine expert sees and knows that what we say of the Paige motor is true, every word of it.

PAIGE

Particularly Distinguished by Its Power Plant

The Paige has achieved Quality Leadership among popular-priced cars principally because of the superior Paige power plant. It is distinctly superior in its price field, and is built with the same care that marks the construction of motors for the highest priced cars. A half hour's time spent in going over the Paige power plant will convince your expert.

Top and Single-Vision Windshield
Multiple Disc Cork Insert Clutch



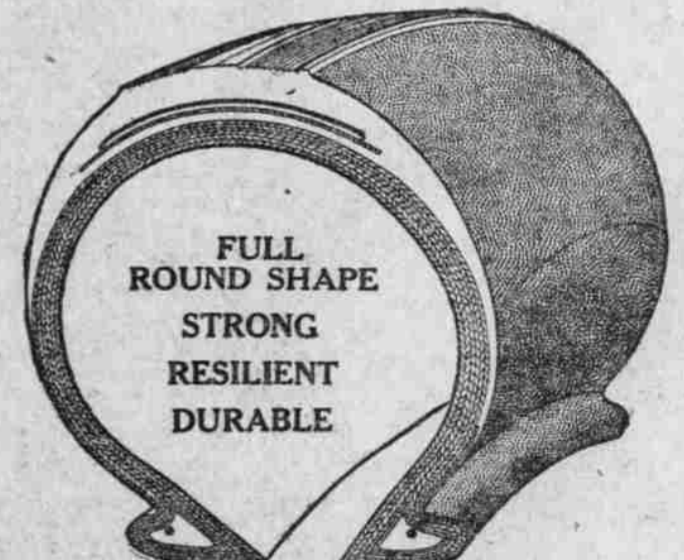
This is the sturdy, stylish Paige Model Beverly Touring Car, \$975. Equipped, as are all Paige Models, with Top, Windshield, 5 black enamel lamps, generator, horn, jack, tools, tire repair outfit, etc. (Self-starter and Prest-O-Lite tank installed at factory if desired, \$25. Quick Demountable Rims (set of 5) on touring car models, including tire iron, \$15. Same equipment on roadster, \$12.50.)

Six stylish models—4 and 5-passenger touring cars, roadsters and raceabout—prices \$975 and \$1000. The beautiful La Marquise Coupe \$1600.

STODDARD-DAYTON AUTO COMPANY
EDWARD E. GERRINGER, General Manager
SERVICE DEPT., 80 Fourth Street, Marshall 2043.
SALESROOMS, 690 Washington St. Marshall 1915, A 1917.
PAIGE-DETROIT MOTOR CAR COMPANY, DETROIT, MICHIGAN

MICHELIN

Quick Detachable Clincher



Easily Fits Any Quick Detachable Rim
No Tools Required

The superiority of Michelin Tires is recognized all over the World

O'Gorman Rim Company
71 Seventh Street Portland, Oregon