

### CRATER ROAD READY

#### Trip From Medford Will Be Made in Six Hours.

#### HIGHWAY COST \$21,000

#### Money for Road's Improvements Subscribed in Medford and in Portland — Automobile to Convey Tourists There.

Medford will open its new road to Crater Lake before the end of the month. This summer a trip to the lake will be made by automobile in six hours from Medford, a distance of 123 miles. This will make this great natural wonder easily accessible to tourists, and Medford people expect a greater number of Portland residents to make the trip this summer than ever before.

This news was brought to Portland yesterday by a delegation of prominent Medford people, headed by William Colvig, president of the Medford Commercial Club. With him were Dr. C. R. Ray, president of the Rogue River Electric Company, which furnishes electric power for Josephine and Jackson counties; Mayor Canon of Medford, and President Han, of the Medford Hotel Company.

"The \$21,000 subscription by the people of Medford and Portland for the construction of the Crater Lake road has effected great improvements," said Judge Colvig. "This season the lake will be made in comfort and in six hours by automobile. Tourists need not hesitate to make this splendid trip for fear of lack of accommodations."

"Medford is entering upon a remarkably prosperous season. During the year ending March 31 the government figures show that the city's receipts were over \$31,000. In the last five years they show a gain of 327 per cent. These figures are not equalled anywhere else in the state outside of Portland."

"I have been abused by people of other localities in this state because I have maintained that our people do not hold Rogue River Valley lands too high in price. The orchard lands for which we get big figures are worth the money. An instance of this is the purchase by George E. Carpenter, of Chicago, of 25 acres last year before the crop was harvested for \$1375 per acre. After disposing of the crop, Mr. Carpenter bought the land for \$1500 per acre, showing that he was satisfied with his purchase. I know another land-owner down there who refused \$1500 per acre for his land. I asked him why he did not sell, for I could well remember the time when the price of one of his acres would buy a whole ranch in our country. He told me there was no reason why he should sell, as the property was paying better than 10 per cent on that figure."

"Rogue River Valley will have the greatest hay crop ever known," on account of the Spring rains. There will be about one-half a peach crop, and as regards other fruits, the damage by frost is apparent in spots. In the center of the valley, where smudge pots were used, there will be fine fruit. The hill land orchards were new to any extent. Four or five acres of apple crop, being greater in amount than last year, on account of the increased acreage. On the whole, the prospects for Medford never have been better than they are this year. We expect to have a half-way station between Portland and San Francisco that will be a distinct credit to the whole state."

### OBJECT IS FOR PUBLIC GOOD

#### Uniform Road Legislation Will Be Urged in Every State.

In its alignment with the American Association for Highway Improvement, the Oregon association will carry on an educational campaign along the lines of the National organization. The purposes of the American Association for Highway Improvement are:

- To correlate and harmonize the efforts of all existing organizations working for road improvement.
- To arouse and stimulate sentiment for road improvement.
- To strive for wise, equitable and uniform road legislation in every state.
- To aid in bringing about efficient road administration in the states and their subdivisions, involving the introduction of skilled supervision and the elimination of politics from the management of the public roads.
- To seek continuous and systematic maintenance of all roads, the classification of all roads according to traffic requirements, removal of road taxes in cash, and adoption of the principle of state aid and state supervision.
- To advocate the correlation of all road construction so that the important roads of each county shall connect with those of the adjoining counties and the important roads of each state shall connect with those of adjoining states.

"The realization of this programme is of vital interest to every line of endeavor, and the farmer, railroad man, automobile owner, publisher or editor, manufacturer, hotel man and business man of every description, can all unite in the common cause," said C. T. Prall, president of the association.

"The American association sends out lecturers and organizers, and seeks to educate the people in every possible way. The roadshows of the Oregon association are heartily in sympathy, and the Southern Railway has sent a special 'Good Roads' train through the entire South."

"The Oregon association will keep in close touch with the American association, and carry on a state-wide campaign along the same lines. This association is not a local affair, although initiated by Portland men."

The officers are: C. T. Prall, president; James Cole, vice-president; Dr. Andrew C. Smith, treasurer; Philip C. Bates and Arnon Moore, directors; and Walter A. Priest, secretary. With the exception of the secretary, the officers serve without compensation, and are devoting a large amount of their time to the work. This is purely a public enterprise, and must have the aid and support of all public-spirited citizens in order to be successful. Country organizations are to be formed throughout the state, and all commercial bodies are expected to get behind the movement. The work will be carried out on broad lines, and local and sectional differences ignored.

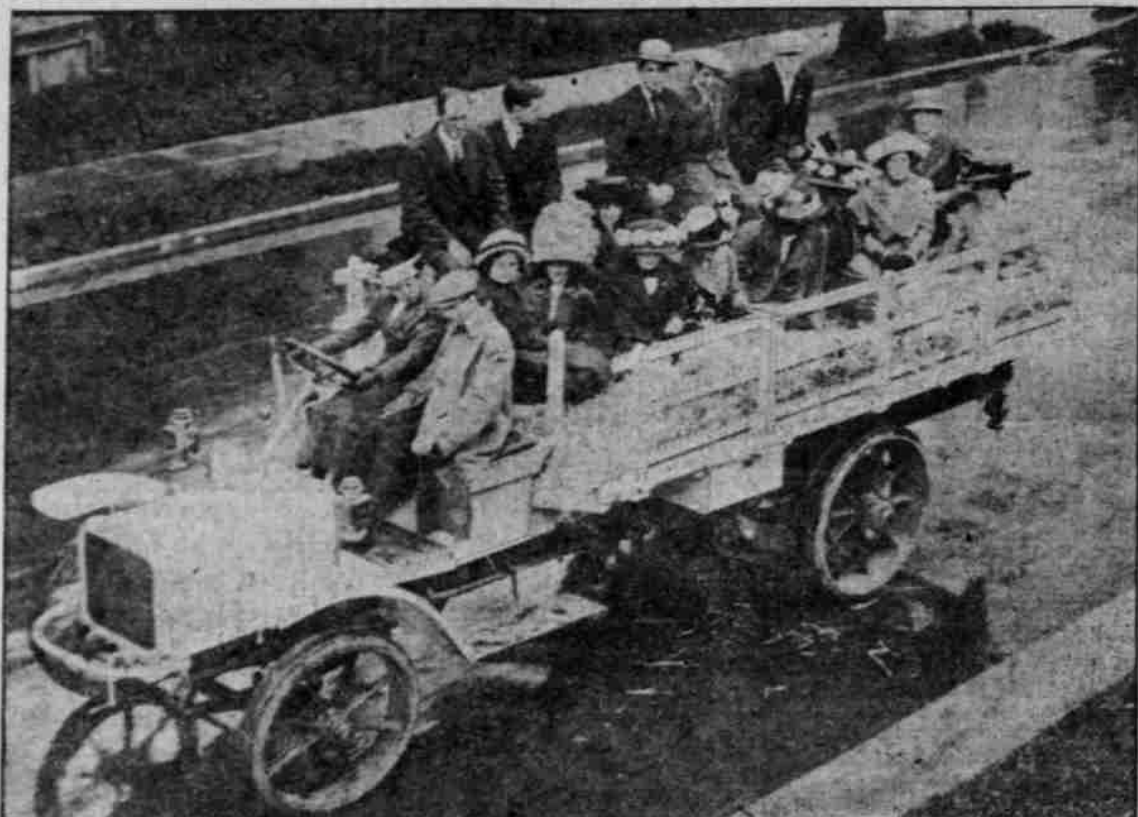
It is hoped to secure 5000 members in Portland alone, and the membership list is so small that this number should be easily secured.

**HOOD RIVER ROAD TO BE IMPROVED.**  
HOOD RIVER, Or., May 21.—(Special.)—Walter G. E. Smith has been granted the contract for the improvement of the country road on the West side from the front of the Epping ranch to Tucker's Hill. The stretch, the length of which is about two miles, will be graded and macadamized.

Fred Hall, another "unknown" Western driver, established a new record for the trip over the foothills of the Rocky Mountains between Denver and Colorado Springs recently, when he covered the 73 miles in 1 hour 43 minutes.

## "STRAW RIDE" IN MOTOR TRUCK WAS ENJOYED BY MISS BATCHER'S FRIENDS

#### Original Social Entertainment Includes Afternoon Drive About City and Moonlight Run to Gresham—Innovation Promises to Be Popular Among Younger Folks.



MISS EDNA BATCHER AT WHEEL OF WHITE MOTOR TRUCK, WITH WHICH SHE GAVE "STRAW RIDE."

A CLEVER and original plan for social entertainment was that inaugurated by Miss Edna Batcher, the daughter of J. H. Batcher, as related in last Sunday's Oregonian. Miss Batcher's old-fashioned "straw-ride," was banked up on the big, broad bed

of a huge five-ton White motor truck and 30 young folks enjoyed this unique "joyride" as Miss Batcher's guests. A number of the party were Allen Preparatory and high school students, and the novel straw-ride was given on Saturday afternoon and evening, the big

White motor truck conveying the happy cargo through the downtown streets, and a moonlight evening run to Gresham, return being made later. In the accompanying picture Miss Batcher is shown at the wheel of the White truck, which she drove a portion of the way, and some of her guests.

### CENTRAL OREGON WAKES

#### AUTO TRUCKS IN LATEST MAKES SUCCEED HORSES.

#### Portland and Redmond Men Enjoy 165-Mile Trip From Klamath Falls to Opal City.

Traveling 165 miles by automobile in Central Oregon in 13 hours from Klamath Falls to Opal City on Wednesday, and taking the Oregon Trunk train at Redmond, 10 miles north on the following morning, D. M. Smith, P. S. Wilson, both of Portland, and J. H. Cook, of Redmond, arrived in the city Thursday evening, two hours ahead of the regular train schedule on the Southern Pacific between Klamath Falls and this city.

"We encountered no difficulties on the drive between Klamath Falls and Redmond, and as the roads were good all the way, we were able to make good time," said Mr. Smith. "We had no idea of finding a quicker way between Klamath Falls and Portland, and we were surprised to learn that we had made better time than by rail the entire distance."

"Central Oregon has had some fine rains and the country is looking fine. Hundreds of people are flocking there to acquire land. Some days the roads are lined in places with wagons and outfits, headed for remoter parts of the district."

"One feature of activity there is the general use that is being made of heavy motor trucks for freighting. A truck carrying four tons of freight can make 50 miles a day and can go four times as far as teams in the same length of time. There are numerous trucks operating now between Opal City and La Pine and other new districts. This modern means of freighting in Central Oregon is in marked contrast with the eight and 10-hour outfits, which, until recently, were used exclusively for heavy hauling in the interior."

"Crop conditions appear to be satisfactory, and the farmers and residents of the district believe that Central Oregon will have the most prosperous year in its history."

### AUTO CHUG CHUGS

F. J. BELL, of the Rambler agency, made a trip to Latourelle last Sunday. Mr. Bell found the roads in condition. He declares that the scenery from the road above Latourelle is delightful, and advises motorists to include this drive in their summer's programme of tours.

Ross B. Cooper, manager of the Winston agency, returned recently from a trip through the Willamette Valley. Mr. Cooper visited McMinnville, Newberg, Aurora, Hubbard, Butteville, St. Paul and other towns, finding business conditions satisfactory. He believes Yamhill County has as good a system of roads as any county he has traveled over in this state.

David Vanboy, a farmer of Kitzkitat County, Washington, purchased a Buick model 23 last week. One of the uses to which he will put his car will be to have the motor supply power for his pumping plant.

E. T. Kelley, Portland agent for the National Cash Register Company, accompanied by E. B. Espy, of the local agency, returned last week from an extended tour of Central Oregon, making the trip in a 48-horsepower Buick.

The manufacture of motor trucks is considered the infant branch of the automobile industry, yet it has grown to such extent that tire manufacturers are crowding their resources to meet the demands of trade. There are in America approximately 100 concerns manufacturing vehicles requiring rubber tires, and 76 different sizes of tires are necessary for the equipment of automobiles and motor trucks.

### AUTOS IN MAIL SERVICE

#### GOVERNMENT USING MANY FOR DELIVERY OF MAIL.

#### Reduction in Cost of Operation and Rapidity With Which Work Can Be Handled Are Advantages.

#### MOTORCYCLISTS PLAN RACES

#### Leading Event to Be 25-Mile Go Between Experts.

The Portland Motorcycle Club will hold a race meet at the Country Club grounds June 11. The programme has not been completed as yet but it has been settled that there will be several exciting events. One of the events will be a 25-mile race between C. S. Dyde, on a five-horsepower Indian, and R. L. Short, on a six-horsepower Excelsior. A match race has also been arranged between two members, one to ride an Excelsior and one a Davidson motorcycle.

It is expected that there will be over 50 entries. Prizes will be given. As this will be the first meet given by the club, unusual interest is being shown. The meet will be under the rules and with the sanction of the Federation of American Motorcyclists, with which the Portland club became affiliated recently.

After a rough trip of 2000 miles which took him through many sections where there was scarcely a semblance of roads, Edward Wilkie arrived in Portland on his Indian motorcycle last week from Kansas City. Mr. Wilkie said that he encountered bad weather nearly all the time he was on the trip. He resided in Portland a few years ago and declares that he came back to remain permanently.

Since the Callan law went into effect New York State has received more than \$7000 in fines imposed upon reckless motorists and chauffeurs. The money is to go to the road improvement fund.

### GOVERNMENT USING MANY FOR DELIVERY OF MAIL.

#### Reduction in Cost of Operation and Rapidity With Which Work Can Be Handled Are Advantages.

Ten different models in the pleasure cars, all 50-horsepower, all 121-inch wheel base. Trucks, one and one-half to six-ton.

We wish to announce the arrival of another member of the Speedwell family, a Four-Ton Truck, which is now on exhibition at our salesroom.

The entire Speedwell line is distinguished company in any company. Proven out by eight years of manufacture and use—everything experimental is eliminated. All Speedwell models are absolutely guaranteed for workmanship and material, and without exception are noted for their long life. May we send you our latest catalogue?

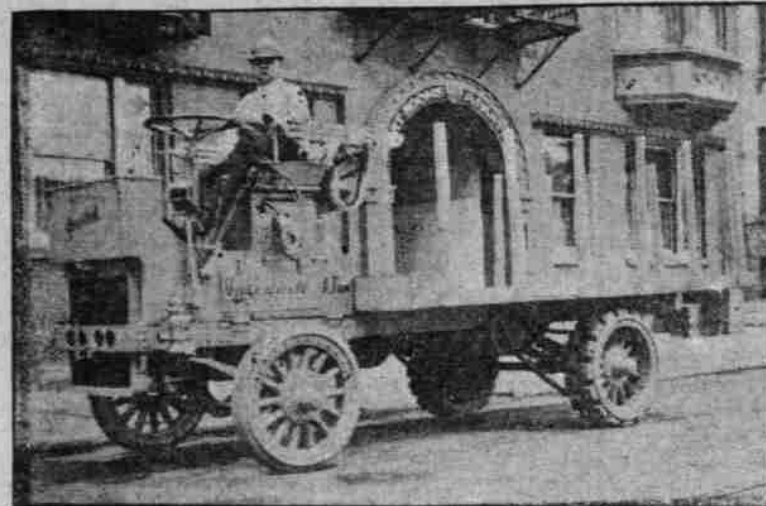
White motor truck conveying the happy cargo through the downtown streets, and a moonlight evening run to Gresham, return being made later. In the accompanying picture Miss Batcher is shown at the wheel of the White truck, which she drove a portion of the way, and some of her guests.

"Automobiles are used at the present time in the mail service in Boston, Philadelphia and Columbus, and I made stops at each of these places."

"With automobiles more frequent return trips can be made to the postoffice, thus permitting earlier dispatch of the mail to its destination and a more even distribution of the work in the mailing division and preventing congestion, which occurs when a large amount of matter is brought in at the same time from long trips."

"In the cities where the automobiles are in use the service has proved much more economical where conditions exist that are practically the same. The figures for the cost of automobile service have not been made public, but the cost of horse-drawn vehicles for the past year was \$824,653,000.90."

"One thing that seriously hampers the automobile in postoffice service, according to the Assistant Postmaster-General, is the fact that the law is such that no contracts of more than one year's duration may be entered into. This makes the contractors unable to plan for the future, and as a result they are unwilling to purchase any larger number of machines or to



10 Models in Pleasure Cars.

Trucks 1 1/2 to 6 Ton

## Speedwell Pleasure Cars and Commercial Trucks

### THE BEST BUILT CARS FOR THE MONEY IN THE UNITED STATES

Ten different models in the pleasure cars, all 50-horsepower, all 121-inch wheel base. Trucks, one and one-half to six-ton.

We wish to announce the arrival of another member of the Speedwell family, a Four-Ton Truck, which is now on exhibition at our salesroom.

The entire Speedwell line is distinguished company in any company. Proven out by eight years of manufacture and use—everything experimental is eliminated. All Speedwell models are absolutely guaranteed for workmanship and material, and without exception are noted for their long life. May we send you our latest catalogue?

## SPEEDWELL MOTOR CO.

533 ALDER STREET—PHONE MARSHALL 1358

equip a repair shop and engage good mechanics.

"If contracts could be made for periods of more than one year, no doubt much better results could be obtained and at a less cost, says Mr. Garfield."

"In addition to the cities where the automobile is now used for mail delivery, Mr. Garfield further said that the service may be extended to other cities where conditions are favorable."

The safety of human lives depends upon this very knowledge.

"All of the big automobile concerns have well equipped laboratories, experts in chemistry are employed and all metals that enter into the construction of cars are submitted to careful analysis for determining their strength and durability."

Over 9000 chauffeurs have been licensed in Pennsylvania so far this year.

Over 9000 chauffeurs have been licensed in Pennsylvania so far this year.

### CHEMISTRY USED IN AUTOS

#### Science Plays Important Part in Manufacture of Cars.

The phenomenal advance of the automobile is due in a large measure to the application of chemistry to the automobile industry.

"Automobile users do not know generally how largely chemistry enters into the manufacture of a car," said A. E. Neate. "It is a broad statement to make that a large share of the success in modern manufacture is due to chemistry. This applies particularly to the manufacturing of automobiles. In fact, the auto is a machine made up of accurately-fashioned metals, requiring the most exacting use of chemistry in the fabrication of the parts. Each part is used for a specific purpose and its strength and resisting qualities are established to a nicety before accepted."

## Prestolite Users

### Read This

#### And Note the Reductions Now in Effect on Gas Tank Recharges

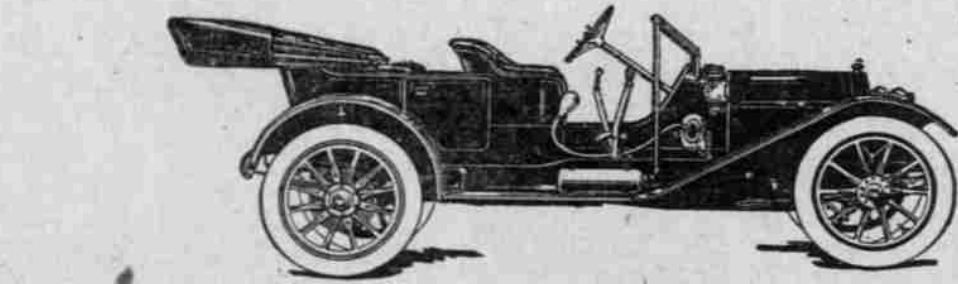
E SMALL	B MEDIUM	A LARGE
\$2.00	\$2.25	\$3.50

### See the New Universal Gas Regulator Valve No More Broken Reflectors

We are the largest jobbers of motor car supplies in the world. That means we are in a position to fill every want of the most fastidious motor car owner.

### Chanslor & Lyon Motor Supply Co., Inc.

627 Washington St. Marshall 1018 A 7633



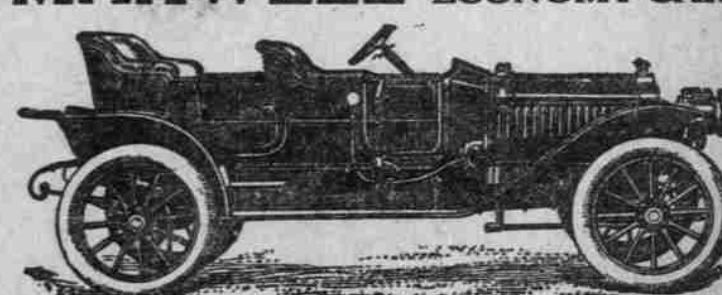
## USED CAR VALUES

It will be time well spent to investigate our slightly used cars, if you are in the market for such a car. Some of the best known makes are among the list and the prices are the best offered by any firm. Anything you want from a two-passenger runabout to a seven-passenger touring car, all newly painted and thoroughly overhauled; don't overlook the fact that we absolutely guarantee them.

## H. L. KEATS AUTO CO.

Burnside, Seventh and Couch.

## MAXWELL THE GREAT ECONOMY CAR



Model A B, 16 h. p. Business Man's Runabout..... \$ 475  
Model Q, 22 h. p. four-cylinder Roadster..... 850  
Model L, 25 h. p. Fore-door Touring Car..... 1050  
Model E A, 30 h. p. Fore-door Touring Car..... 1150  
Model G A, 30 h. p. Fore-door Roadster, with demountable rims, extra tire, tube and rim, Hartford Shock Absorbers..... \$1550

PRICES PORTLAND DELIVERY  
More Doctors and Mercantile Establishments in Portland Using Maxwells Than Any Other Make of Automobile

## UNITED AUTO CO.

534-4 ALDER STREET PHONES—MAIN 4237, A 7171  
Distributors for Oregon  
MAXWELL COLUMBIA SAMPSON TRUCKS