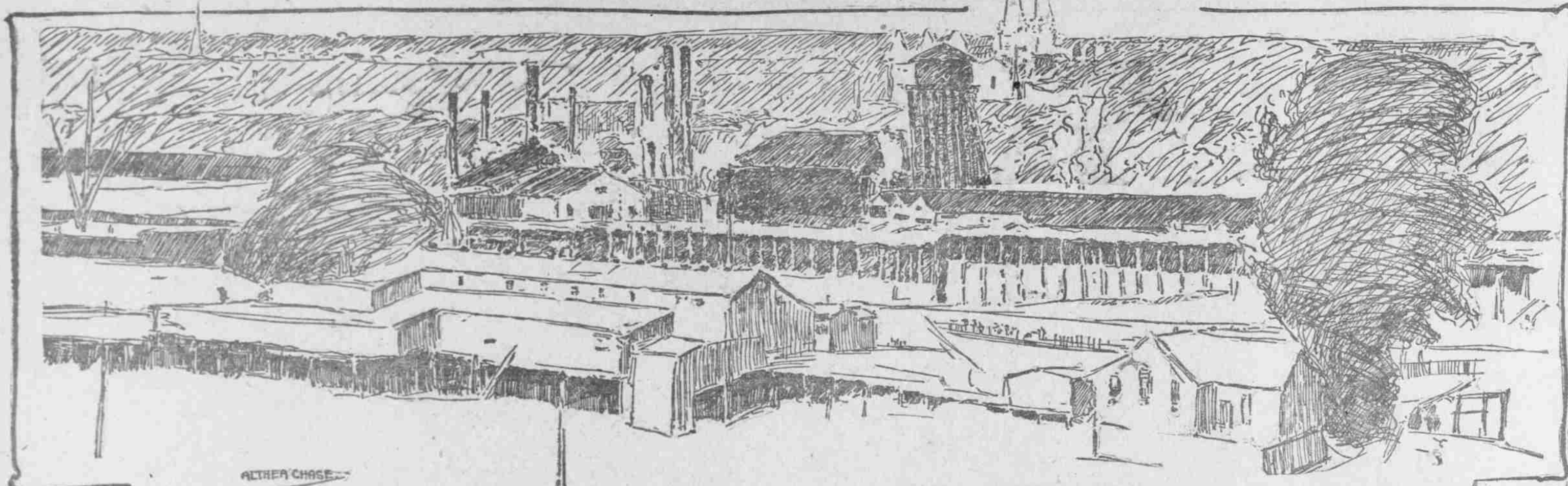
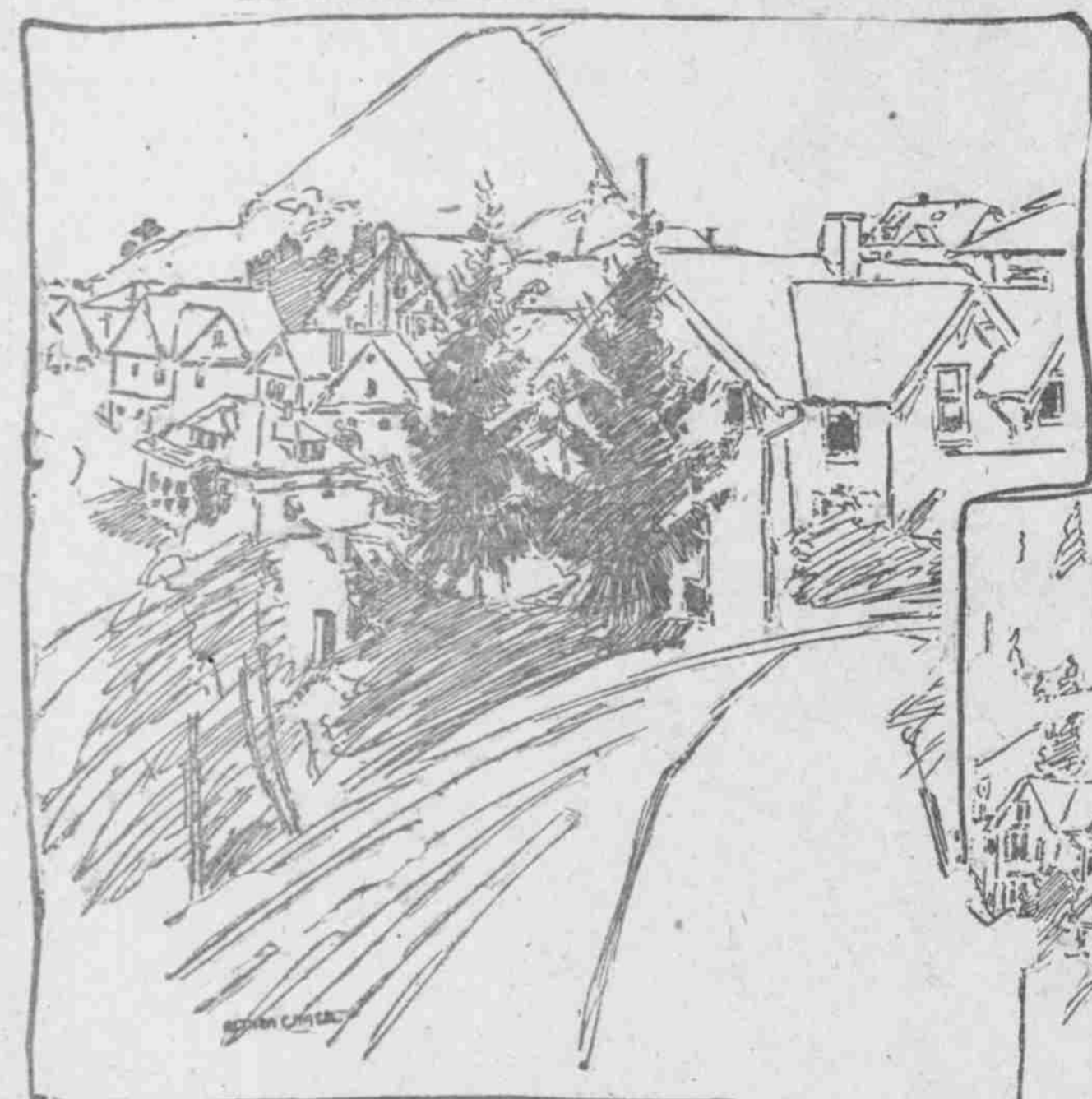


Picturesque Places in Portland

PEN AND INK
SKETCHES OF BYWAYS
by Althea Chase

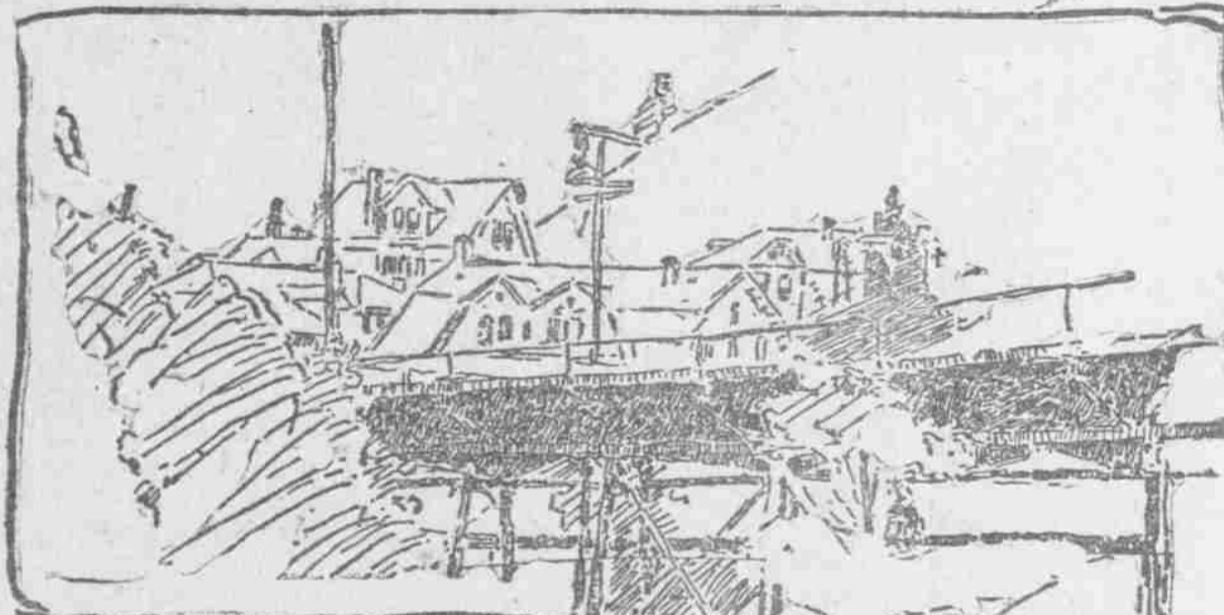


ALTHEA CHASE



WILLAMETTE HEIGHTS
AT END OF CAR
LIFE

INDIAN
PAULSON
HILL

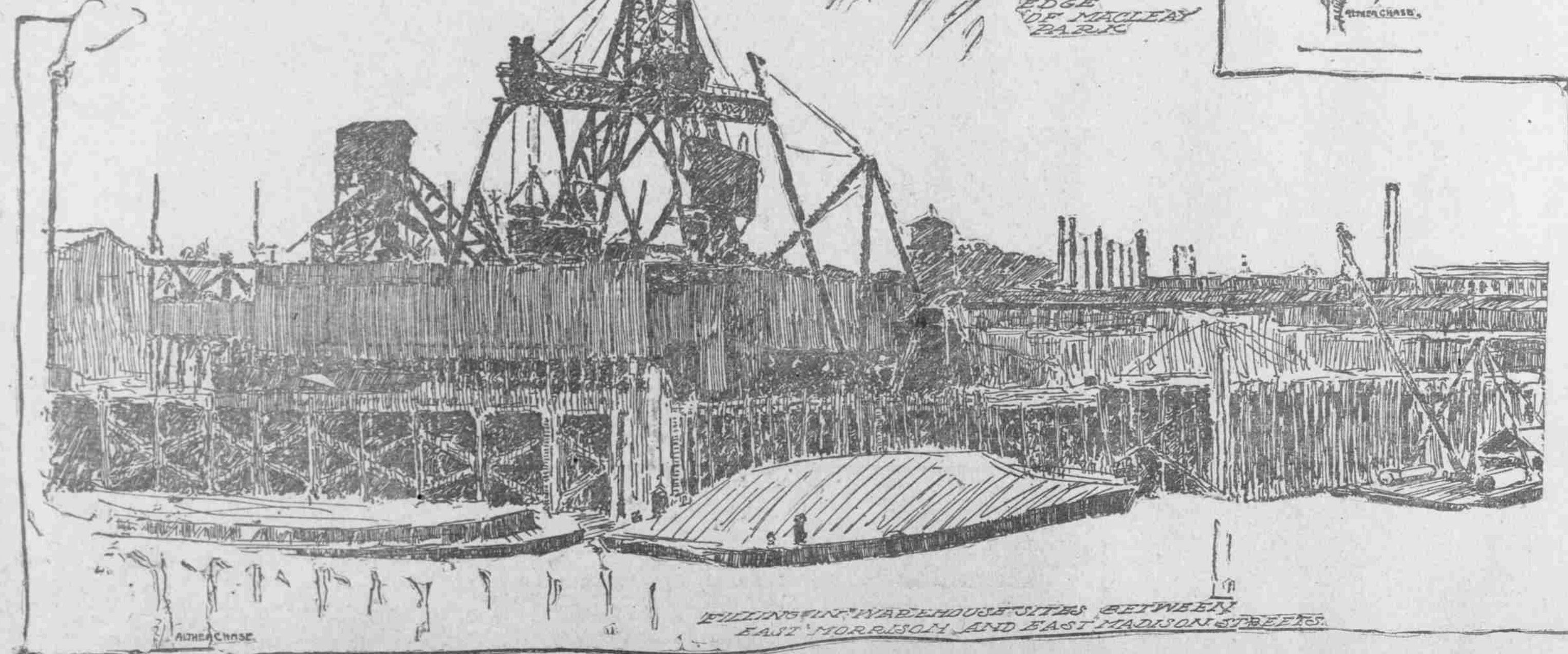


NEAR THE
EDGE
OF MACLEAY
PARK



BALCH CREEK
CANYON,
AT
WILLAMETTE
HEIGHTS

ALTHEA CHASE



ERECTING WAREHOUSE SITES BETWEEN
EAST MORRISON AND EAST MADISON STREETS

ALTHEA CHASE