

ANIMAL PROMOTED TO SANTA CLARA

First Officer of Roanoke is Named to Command Repaired Steamer.

RUN CAUSES SPECULATION

Vessel May Be Placed on Portland-Humboldt Route, Which Needs Better Ship—Two Boats on Tillamook Run Do Well.

Changes made by the North Pacific Steamship Company in putting First Officer Ahlman, of the steamer Roanoke, in command of the Steamer Santa Clara, which has been repaired at San Francisco after being wrecked April 11, south of Eureka, and filling his place with Frank Vega, formerly second officer of the steamer Kiburn, has given rise to speculation as to what run the Santa Clara will be assigned.

C. P. Doe, head of the corporation, is in Chicago and at the local office it is said nothing will be done regarding the vessel until he returns. At the same time it is known that the steamer Eureka was placed on the Portland-Humboldt Bay route to determine what business could be secured with a view to improving the service later with a faster craft, and one of greater carrying capacity. The Eureka, while regarded as a good sea vessel, has not sufficient power to handle the severe head winds that are encountered, and with accommodation for only 40 passengers she has had a full list on every voyage from Portland.

Northbound Cargoes Light. One strong complaint made against the run is that there is not enough northbound business. Southbound the vessel has had plenty of cargo for Portland merchants have a fair trade despite competition from San Francisco. A few cars of sashes and doors and smaller freight, for on arrival yesterday she stopped at the Union Stock Yards to discharge 108 head of hogs. It is understood there will be regular shipments of stock to this market in future.

Elmore Brings Cream. The Elmore also had the first shipment of an unusual consignment. She unloaded 24 cans of cream that had been increased in tubs and packed in ice. While there is plenty of cream to be secured in the Tillamook region, because of its vast dairying interests, it has been thought in the past that it could not be handled by water owing to limited facilities in the way of refrigeration. The method introduced by the Elmore promises to eliminate that objection. When she sails Tuesday the tubs will be returned to be refilled with cream, and will be packed in which were shipped fresh fish, packed in ice.

Floating Cargo Bought. Local Mills Unable to Fill Order for China Lumber Market. Because local mills were unable to execute the order immediately, the China Import & Export Company yesterday announced that it had purchased a cargo of lumber that was recently floated from a Northwest port, but the name of the vessel and destination are being withheld. The cargo consists of 2000 feet of lumber, a tramp steamer that the company will load for North China, is due in the river tomorrow and will take cargo to London and at the Portland mill 4,000,000 feet having been ordered for her. Other tonnage is being negotiated for that may be engaged before the arrival of the Japanese steamer Otari, Maru No. 2, which is due this month.

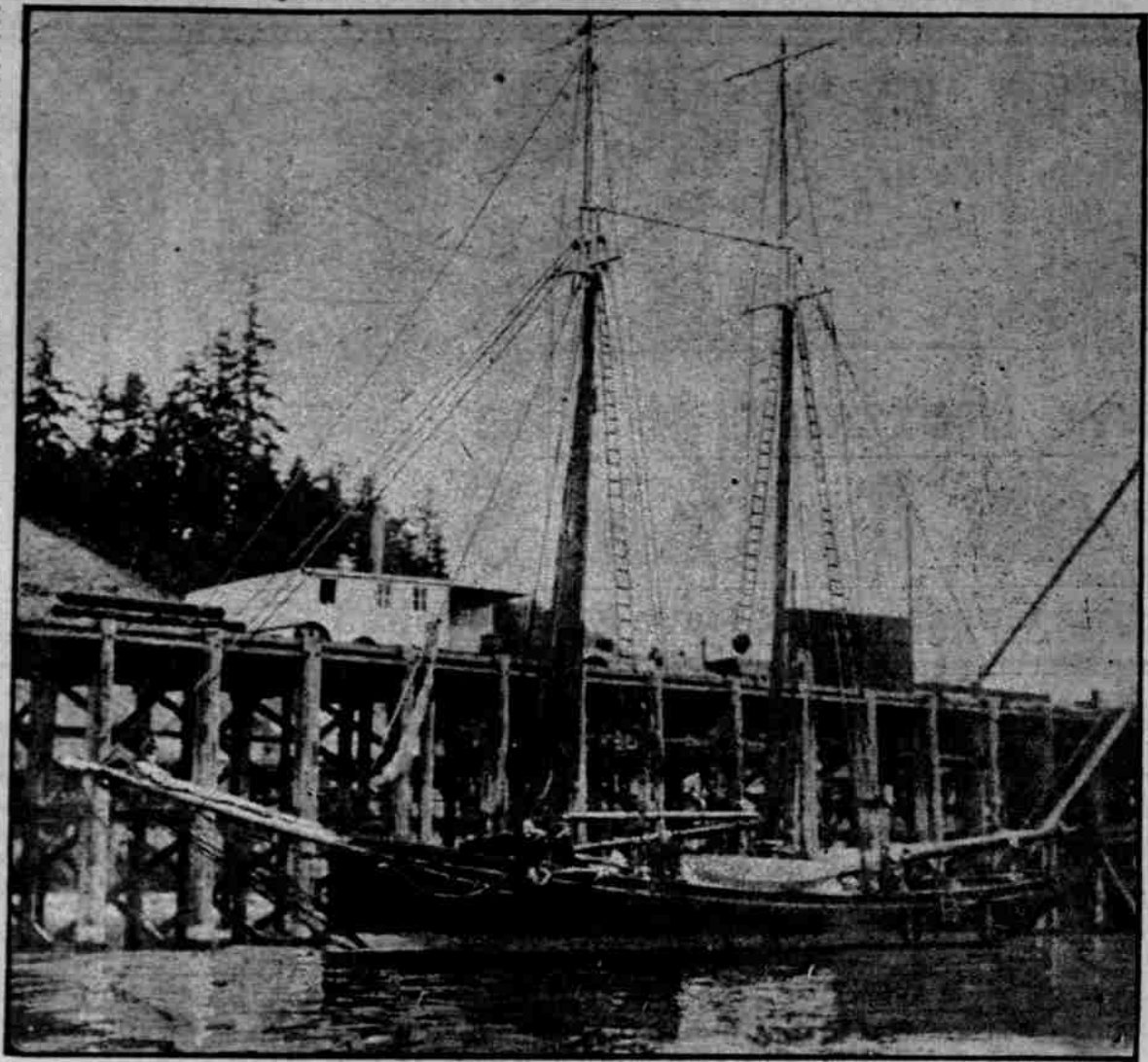
Tramp Steamer Runs on Reef. Valued, Coal Laden, Hits Rocks on Florida Coast.

Miami, Fla., Aug. 6.—The Spanish tramp steamer Valueda, loaded with coal from Cardiff for Vera Cruz, ran on the reefs eight miles south of Fowey Light yesterday.

Hercules Reported at Yokohama. It was yesterday learned that the steamer Hercules, of the Portland & Asiatic Steamship Company, reached Yokohama August 2. She sailed from the Columbia River July 14 and did not make as fast time in comparison as the Solsja, which arrived at the same port yesterday morning, five days before she was expected, having crossed the Pacific in 15 days, breaking her previous record by 24 hours. She reached here on her first voyage June 12, 1909, after 16 days on the way. On her second trip she was 28 days en route and on the third 27 days. She left up at noon yesterday and will begin discharging today at Albemarle dock.

Additional Ships Are Sought. Private advice from Bates & Chesbrough, of San Francisco, are to the effect that the firm is looking about for additional tonnage to be operated on the New York-Portland route. Despite the

PILOT BOAT EQUIPPED WITH WIRELESS, TO RESUME STATION OFF COLUMBIA.



STEAMER JOSEPH PULITZER.

With her new wireless apparatus thoroughly tested and arrangements made for handling messages through the wireless station at St. Helens, the pilot schooner Joseph Pulitzer will leave tomorrow for the mouth of the Columbia River, where she will remain on duty until next summer. The Joseph Pulitzer is the first pilot craft on the Pacific Coast to be equipped for aerogram work and while its power is not sufficient to send as far as with vessels having more space between the masts, it is confidently expected that within a radius of 50 miles the new equipment will make the schooner much more valuable than before in facilitating the arrival and departure of vessels. Captain Dexter has resumed command of the schooner, in addition to the crew there will be two pilots on duty until shipping increases in the Fall. The Pulitzer has been overhauled from stem to stern. All gear has been gone over and the Port of Portland Commission has added features to provide comfort for the company and increase the efficiency of the schooner.

4 SPANS IN PLACE

Madison Bridge to Be Finished in September. Work on Draw Lift Begun. High Span Will Be Put Together on False Work and Floated Into Position—Estimated Cost of Structure is \$450,000.

action of the American-Hawaiian in over-bidding them on two steamers shortly after the new line was announced, they hope to have vessels to help the steamer Atlas by January 1, at least. The Atlas left New York a week ago to finish loading at Philadelphia and is due to sail from there tomorrow.

CONTRACTORS EXPECT TO COMPLETE NEW MADISON BRIDGE BY MIDDLE OF SEPTEMBER.



FOUR OF STEEL SPANS NOW IN PLACE AND WORK STARTS ON CONSTRUCTION OF HUGE DRAW LIFT.

PURCHASES AMOUNTING TO \$5.00 DELIVERED FREE WITHIN 100 MILES

Morgan's Department Store. Grand Ave. at East Stark St. B 6135 PHONES EAST 985

RESIDENTS of the WEST SIDE TAKE E. ANKENY CAR ON MORRISON STREET DIRECT TO THE STORE

The Quality Store of the East Side. It is a great compliment to a store when women prefer it to other stores, as the most satisfactory place to trade. Women do the shopping and they know when merchandise is good and the prices are right.

New Shoe Department Open. Men's, Women's and Children's Shoes. The Shoe Department is now open and ready for business. The same conscientious care has been given in selecting the stock for this department that has been given all other stocks at Morgan's.

Mary Jane Aprons For Women. The good kind. They are larger. They are made only of Amoskeag ginghams. Assorted checks in blue colors only. The buttons are sewed on good. The aprons are full size; allowance is made in cutting for shrinkage. They are the best aprons for the money. Note styles and prices:

Tailored Linen Suits for \$2.50. All Sizes for Misses and Women. To clean up our stock of Tailored Linen Suits we have made such reductions that will cause them to be carried away in a hurry. Made of pure linen rep—new styles—high-grade tailoring; colors, white, natural, heliotrope and blue. \$10.00 Suits, Sale Price \$2.50

\$12.50 Black Taffeta Coats \$7.50. A black taffeta Coat is a wrap that is always useful; buy one now and save. The kind that will give you good service; made of high-grade taffeta, full length and width, all sizes. \$12.50 values, Sale Price \$7.50

Waist length, 46 inches wide, plain hem, long tie strings, waist bands 20 to 28 inches, lengths 39 to 45 inches; special price \$3.95. Bib Apron, with shoulder straps, pocket and long strings, 50 inches wide, waist band 20 to 28 inches, lengths 39 to 45 inches; special price \$4.95. Mother Hubbard style, with shoulder straps, cut full, buttons in back, 80 inches wide, bust 32 to 44, skirts 39 to 45 inches long; special price \$6.95

Wash Petticoats Now at Saving Prices. Our entire assortment of Wash Petticoats, made of ginghams and percales at such reductions that will interest you. Extra sizes, included at these prices; all good colors in striped effects; all lengths 98c vals., sale price 69c \$1.49 vals., sale price 95c

Veilings at Half Price. Our entire stock of Veilings, in chiffons, nets, etc.; regular values 19c to \$1.00. Special Monday 1/2 Off regular price. Embroideries One-Half. Our entire stock of fine Embroideries, in edgings, insertions, flouncings, alovers, etc.; regular values 6c to \$2 yard. Monday 1/2 Off regular price.

\$4.95 Walking Skirts at \$3.50. Women's all wool Skirts made of fabrics that are most wanted right now. A variety of styles, all lengths and waistbands; colors: Black, navy, gray, olive, cardinal and an assortment of stripes. \$4.95 values, Sale Price \$3.50

Clean-up on Wash Fabrics. 15c Wash Goods 5c. Our entire stock of Lawns, in all colors, etc.; regular values 15c; to clean up lot, yard 5c. 35c Wash Goods 12 1/2c. About 2000 yards of Wash Goods of all descriptions, in all colors; poplins, lawns, etc.; regular values 25c and 35c; Monday, to clean up... 12 1/2c

Big Savings on Towels. 40c Towels 19c. 98 dozen Towels in pure linen huck, in variety of styles and sizes; also damask in plain hemstitched and fringed. This is part of a large lot bought at about half price. Regular values 25c, 35c and 40c. Monday \$19c. 10c Towels 6c. 17x34 Cotton Huck Towels, good weight, excellent quality; with red borders only; regular 10c values. Sp 1 Monday 6c. 85c Bath Towels 47c. Large variety of fine, large Bath Towels, including some bleached and unbleached linens; regular values 69c, 79c and 85c values. Special 47c. 12 1/2c Bath Towels 5c. 100 dozen Unbleached Bath Towels, fringed, good weight, large size; regular values 12 1/2c. Monday 5c. \$1.50 Bath Mats 69c. Bath Mats, in all colors, medium and extra heavy weight; large size; values in the lot at \$1.00, \$1.25 and \$1.50; some slightly soiled. Special Monday 69c.

Our stock of Sheets and Pillow Cases is as complete as any in the city. Prices are lower. Furnish your needs Monday at big savings. 12 1/2c 45x36 Pil. Cases 8c. Made of good grade of muslin, in 42x36 or 45x36; our regular 12 1/2c value. Monday 8c. 17c Hemst'ched Cases 13c. 200 dozen 45x36 Hemstitched Pillow Cases; medium weight muslin; regular value 17c. Monday 13c. 25c Pequot Pil. Cases 17c. 42x36 and 45x36 Pequot Pil. Cases; regular value 22c and 25c. Monday 17c. 72x90 Pequot Sheets 69c. You know the quality, the regular Pequot Sheet, 72x90; regular value 90c. Special Monday 69c.

81x90 Mohawk Sheet 79c. These are made of extra fine muslin; full 81x90; regular value 95c. Monday 79c. 55c 72x90 Sheets 35c. 72x90 Sheets, a quality that will wear; good, heavy muslin; regular value 55c. Special Monday only 35c. 55c 81x90 Sheets 39c. Extra heavy muslin, made with seam; 81x90; regular 55c value. Special Monday 39c. 69c 81x90 Sheets 49c. These Sheets are also made with a seam; made of excellent quality of muslin; regular value 69c. Sp 1 Monday 49c. 79c 81x90 Sheets 59c. One of the best Sheets in the house for wear; full 81x90; made without seam; our regular 79c value. Special Monday 59c.

Table with columns: Name, From, Date. Lists ship arrivals including Breakwater, Coos Bay, Golden Gate, Rose City, etc.

Table with columns: Name, For, Date. Lists ship departures including Breakwater, Coos Bay, Golden Gate, Rose City, etc.

Table with columns: Name, From, Date. Lists ship arrivals including Umatilla, Tenyo Maru, etc.