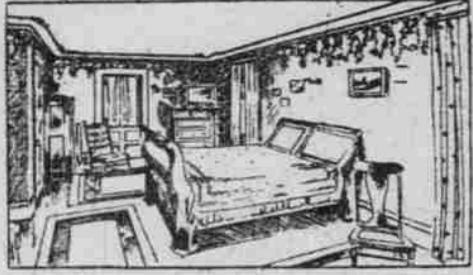


Tull & Gibbs, Inc. MORRISON AT SEVENTH Tull & Gibbs, Inc. MORRISON AT SEVENTH Tull & Gibbs, Inc.

Portland Agents for Modart Corsets, Lily of France Corsets, Madeleine Corsets, Rengo Belt Corsets.



NEW THINGS IN Spring Curtainings

The advent of Spring is a reminder of the redecoration of the home—the renewing of the window and door hangings, floor coverings and other things that give it a touch of newness and brightness. The Drapery and Upholstery Department is ready with a varied showing of fabrics up-to-date for the most modest as well as the finest home. Look over the line of lightweight materials for Spring and Summer hangings, sixth floor.

Plain Scrims in eoru and ivory tints and in white—**25c to \$1.50** yd. Fancy Scrims in crossbar effects, eoru and ivory tints, and in white—**25c yd. to \$2.50** yd.

Figured Muslins in coin spots, crossbar effects, stripes and figures—**15c yd. to \$1.25** yd.

Bungalow Nets in splendid assortment of designs, 40 to 48 inches wide. Arabian color and white—**50c yd. to \$1.75** yd.

Sundour Fabrics—for light overhangings for windows. In a variety of colors and guaranteed not to fade—**\$1.00 yd. to \$1.25** yd.

Cretonnes—French, English and domestic—in pretty floral designs and colorings—**25c yd. to \$1.25** yd.

Drapery Silks—Plain and figured Florentine Silk and plain Shaiki Silk. All colors—**75c yd. to \$1.35** yd. Out-of-town requests for samples given prompt attention.

BREAKFAST, MIDDAY LUNCH AND AFTERNOON TEA IS BEST SERVED IN THE WISTARIA TEA ROOM—ON BALCONY

Stylish Coats for Spring and Summer-long Wear

All that is distinctively smart and new in Women's and Misses' Coats for Spring and Summer wear is to be seen in our showing. The plain Tourist Coats in covers and fancy mixtures, the new three-quarter models, as well as the full-length, with both the medium and the large roll collar, are among the new styles that are so very popular. Wonderful variety shown in these coats at **\$9.50** and to **\$25.00**.

Silk Coats in every favored effect and style, from the plainest semi-fitted model to the more extreme. They're of the very best quality of silk taffeta, some of them beautifully lined.

A semi-fitted, three-quarter length model of the best black silk taffeta, at **\$9.75**.

Another model, semi or tight-fitting, and full length, also of best taffeta, at **\$15**.

At **\$20** is another full-length model of black silk taffeta, extra wide, with plaits from yoke or straight to neck and stitched down to form yoke.

Another model, of black taffeta, has wide plaits and is trimmed with plain black braid, at **\$20**.

Other models in black taffeta and satin, also in crepe meteor, chiffon and cashmere de soie, for afternoon or evening wear, at **\$25** and to **\$95**.



De Bevoise Brassieres

Fashion decrees that a brassiere shall be worn in place of a corset cover. The present-day style of outer gowning makes this necessary.

Most women realize that many a beautiful gown is marred through lack of correct underdress. The unsightly ridges caused by the edge of even the best-fitting corset too often shows through the outer gown, spoiling its beauty and the stylish contour of the figure.

The snug-fitting, figure-forming De Bevoise Brassiere hides this corset ridge and does away with the wrinkles and gathers of loose-fitting corset covers. It will give your figure correct lines and proper carriage, and enable you to secure the best possible effects in the fitting and draping of your gowns. De Bevoise Brassieres are priced from 50c to \$2.50.

CORSET DEPARTMENT, WEST SECTION, FIRST FLOOR.

From the Prairies of the North to the Homes of the World The Grass Rug

This hard-twisted prairie grass in its natural colors of soft green and brown makes an ideal Summer rug and a good rug for general use where price is an important factor. In the Summer cottage or tent, or on the porch, the grass rug adds the necessary touch that completes the artistic ensemble so much sought after in our Summer camps and homes. For the porch they are the best low-priced rug on the market, and are slightly, durable and clean. The range of sizes makes selection easy for outdoor or indoor use. \$12 for the 9-foot by 12-foot size. You can see them to advantage on our rug racks.

Specials IN DRAPERY DEPARTMENT

- \$2.25** Pair for Nottingham Lace Curtains in eoru and cream tints and in white—full curtain width and 3 yards long—regular values \$3.50 pr. and \$4 pr.
- \$7.75** Pair for imported Duchesse Lace Curtains in ivory tint. Full width and 2½ yards long. Choose from curtains worth \$13.50 pair, \$14 pair and \$15 pair. at the low price of **\$7.75** pair.
- \$3.85** Each for Couch Covers that are 60 inches wide and 3 yards long, in Oriental designs and colorings. Worth \$5.50 and \$6.00 each.
- \$6.25** Pair for Portieres in mercerized armure and art cloth, in red, blue, brown and green. Regular width and length. Worth \$9.50 pr. and \$10.50 pr.
- \$5c** Yard for Tapestry 50 inches wide and in Oriental designs and colorings, suitable for upholstery or hangings. Sells regularly at \$1.50 yard.

Monday and Tuesday—6th Floor

Hammocks, Velocipedes, Tricycles, Coasters, Wagons, Toys, etc.—in the Basement Store.

An Odd-Waist Sale Waists Worth \$5.95, \$6.50, \$7.50, \$10—at **\$3.95**

Lace Waists, Net Waists, Waists of Chiffon, Messaline and Silk, in so many different shades that there should be no difficulty in choosing one in style and color to your particular liking. Every odd Waist of the above kinds in our Waist Section (and many of them are imported models) are included in the lot which we've grouped in Monday's sale at **\$3.95**. Some very plainly tailored: others in fancy effects. Sleeves long or short. All sizes—from 32 to 34.

Extraordinary values also in Black Net Waists and in white and colored Blouses. Be among the first to share in this interesting Waist-bargain event. Waist Section—Main Floor.



Beautiful Lace Coats Are to Show a **One-Third** Price-Reduction of

For the woman who desires to add a distinctive touch of style to her lingerie dress or something that she can appropriately wear over her dinner or evening gown, nothing better could be imagined or show as much good taste than one of these beautiful Lace Coats—Fashion approves of them more now than ever.

Every Lace Coat in our stock is to show the interesting reduction of one-third in tomorrow's and Tuesday's sale.

Beautiful imported and hand-made Coats of crocheted lace, embroidery and net; in black, white, cream, eoru and natural linen, and in many different lengths. Those in the white and natural can be dyed to effectively match the shade of gown or dress.

Lace Coats, worth **\$18.50, \$25, \$35, \$50** and to **\$100—Underpriced One-Third.**



NEW MODELS IN POPULAR-PRICED Corsets

Model 1002, at **\$1.50**, is an ideal light-weight Corset for slender women. Made of batiste and boned with flexible, rust-proof steel. Medium high bust and long hip.

Model 333, at **\$2.00** is an excellent Batiste Corset for the average figure. Medium bust and long hip.

Model 63, at **\$3.00**, is adapted to the short, full figure, is low under arms and has low bust and long hip. Made of excellent quality coutil and double-boned throughout. Embroidery trimmed.

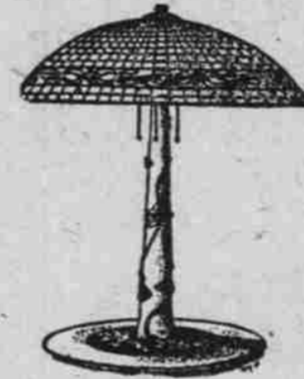
Model 69, at **\$3.50**, is a corset for the average figure; has medium bust and extreme long hip. This model is made of French coutil and boned with rust-proof steel. Three pairs suspender-web supporters attached.

Model 14, at **\$1.50**, is the correct Corset for young girls. Very short and light weight. Steels are absolutely rustproof and very flexible. Lace trimmed.



FINE WALL PAPERS AND FABRICS IN THE DECORATIVE DEPT.—Sixth Floor

Electric Lamps and Domes—A Special Sale



- Monday and Tuesday —Basement Store
- \$3.95** for Mission Electric Table Lamp, worth \$6.50.
 - \$9.60** for Fumed Oak Electric Table Lamp, worth \$12.00.
 - \$12.80** for Fumed Oak Electric Table Lamp, worth \$16.00.
 - \$13.20** for Fumed Oak Electric Table Lamp, worth \$16.50.
 - \$22.80** for Electric Portable with art glass shade and bronze base, worth \$28.50.
 - \$28.00** for Electric Portable with art glass shade and bronze base, worth \$35.00.
 - \$11.20** for Mission Electric Dome, worth \$14.00.
 - \$19.50** for Mission Electric Dome, worth \$25.00.
 - \$26.50** for Mission Electric Dome, worth \$30.00.

Easy Payments on Any of These if Desired

Remarkable Reductions in High Art Lighting Pieces

- These lamps represent the highest artistic talent in design, the best material and the most skillful craftsmanship. The shades are firmly held by copper bindings, which gives them a durability unsurpassed. The portables or bases are made of bell bronze metal, hand chased. The finishes are mostly Verde Green.
- \$45.00** for art glass electric dome, worth \$110.
 - \$76.50** for Electric Portable, art glass shade and bell metal base, worth \$163.00.
 - \$162.50** for Electric Portable, art glass shade and bell metal base, worth \$272.50.
 - \$100.00** for Electric Portable, art glass shade and bell metal base, worth \$280.00.
 - \$105.00** for Electric Portable, art glass shade and bell metal base, worth \$315.00.
 - \$40** for Art Glass Electric Dome, worth \$97.50.

The Liberal Buying Terms of \$1 Down, \$1 Week

Will Enable You to Enjoy Summer Comfort and Convenience by Placing in Your Home a

New Process Gas Range

Gas is conceded to be one of the greatest conveniences that the housewife enjoys, and especially during the hot Summer months. And yet she does not realize the comfort and pleasure of cooking without a good gas range.

New Process Gas Ranges give the best and quickest results with the least amount of fuel. The hundreds of people who are using them in Portland will vouch for their economy.

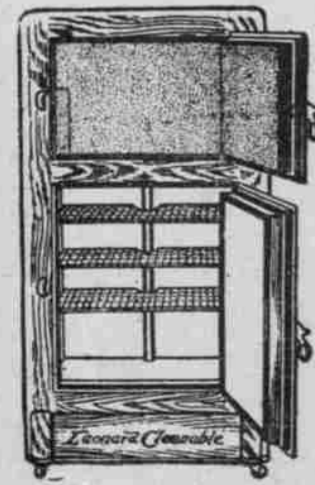
There's every style and size in the New Process line to meet the demands of every home. Allow us to show you their points of superiority.

Priced from \$14.50 up. Connections are free where gas stubs are conveniently located.

Basement Store



Twelve Separate and Distinct Walls in the Leonard Cleanable Refrigerator



The insulation or non-conducting supremacy of the Leonard casings is unequalled, there being no less than twelve separate and distinct walls separating the contents from the outside air.

No wonder that low temperature can be maintained with the least amount of ice. In the Leonard line there's a refrigerator to meet the requirements of every home. It rightly deserves the name "Cleanable," because the irons which make one side of the air passage, as well as the flues, can be easily and quickly removed and washed as sweet and clean as new.

It's true economy to buy a Leonard Cleanable—there's a reason. Allow us to show you where they excel.

Priced from \$26.50 up. Other makes as low as \$8.00.

One in Your Home on the Liberal Buying Terms \$1.00 Down and \$1.00 a Week

Upholstering and Repairing

—is done at its best in our completely and modernly-equipped work shops—by skilled upholsterers, cabinetmakers and finishers. You'll be surprised at the results that can be accomplished in restoring old furniture to a serviceable and attractive condition. We'll gladly furnish estimate on the cost of putting your pieces in shape.

Good Window Shades Mean—Good cloth as a foundation, good rollers and good work-

manship. The last factor is as essential as the matter of materials, for the very best materials will be completely spoiled by poor work. None but the best materials are used in our Window Shades—none but the best workmanship and methods in their making and hanging. We'll gladly furnish estimates on the shades for your new home, or the making over of your old shades. Sixth Floor.



THAYER Collapsible Gocarts

- at \$ 7.00
- \$10.00
- \$12.50

—is the only one-motion vehicle on the market—can be quickly and easily folded with one arm while the child is held in the other. Stands on end when folded. An attractive little model, that is made in three different styles.

The best of the season's models in Perambulators, Baby Carriages and Go-carts shown in our line. Folding Carts as low as \$2.00.

Any vehicle offered on the buying terms, **\$1 DOWN, \$1 WEEK.**

Order by Mail You can do your shopping this way without difficulty and with utmost satisfaction. Prompt and careful attention given to every order and inquiry. Samples of carpets, drapery, upholstery and curtain materials will be cheerfully sent, free on request.

Lawn Mowers, Garden Hose, LAWN AND GARDEN Requisites

Monday and Tuesday Bargains—Basement

Save by buying yours now and at the same time give your lawn and garden the attention which it most needs at this season. Monday and Tuesday in the Basement Store.

- \$2.80** for the 14-inch Capital Lawn Mower, parallel bearings—regular price \$3.50.
- \$3.40** for the 16-inch Regal Lawn Mower, parallel bearings—regular price \$4.25.
- \$5.20** for the 14-inch Crown Lawn Mower, ball-bearing—regular price \$6.50.
- \$5.60** for the 16-inch Crown Lawn Mower, ball-bearing; regular price \$7.00.
- \$6.50** for the 18-inch Crown Lawn Mower, ball-bearing—regular price \$8.50.
- \$7.40** for the 16-inch Supreme Lawn Mower, ball-bearing—regular price \$9.25.
- \$8.10** for the 18-inch Supreme Lawn Mower, ball-bearing—regular price \$9.75.
- GARDEN HOSE—THE BEST IS ALWAYS THE CHEAPEST**
- \$6.60** for 50 feet of seven-ply ½-inch Red Indian Hose—regular value \$7.75.
- \$7.65** for 50 feet of seven-ply ¾-inch Red Indian Hose—regular value \$9.00.
- \$5.55** for 50 feet of five-ply ½-inch Tortoise Hose—regular value \$6.50.
- \$6.60** for 50 feet of five-ply ¾-inch Tortoise Hose—regular value \$7.75.
- \$5.10** for 50 feet of three-ply ½-inch Elk Hose—value \$6.00.
- \$4.70** for 50 ft. ½-inch Cotton Hose—regular value \$5.50.
- \$5.10** for 50 feet ¾-inch Cotton Hose—regular value \$6.00.

HOSE SPRINKLERS AND NOZZLES

- \$1.35** for the Pluvius Sprinkler—regular price \$1.75.
- 80c** for the Ring Sprinkler—nothing to get out of order. Regular price \$1.00.
- 30c** for the Diamond Hose Nozzle—regular price 40c.
- Grass Shears at 50c**—The nox-em-all—regular price 75c.
- Grass Hooks or Sickles at 30c**—The Champion—reg. price 40c.