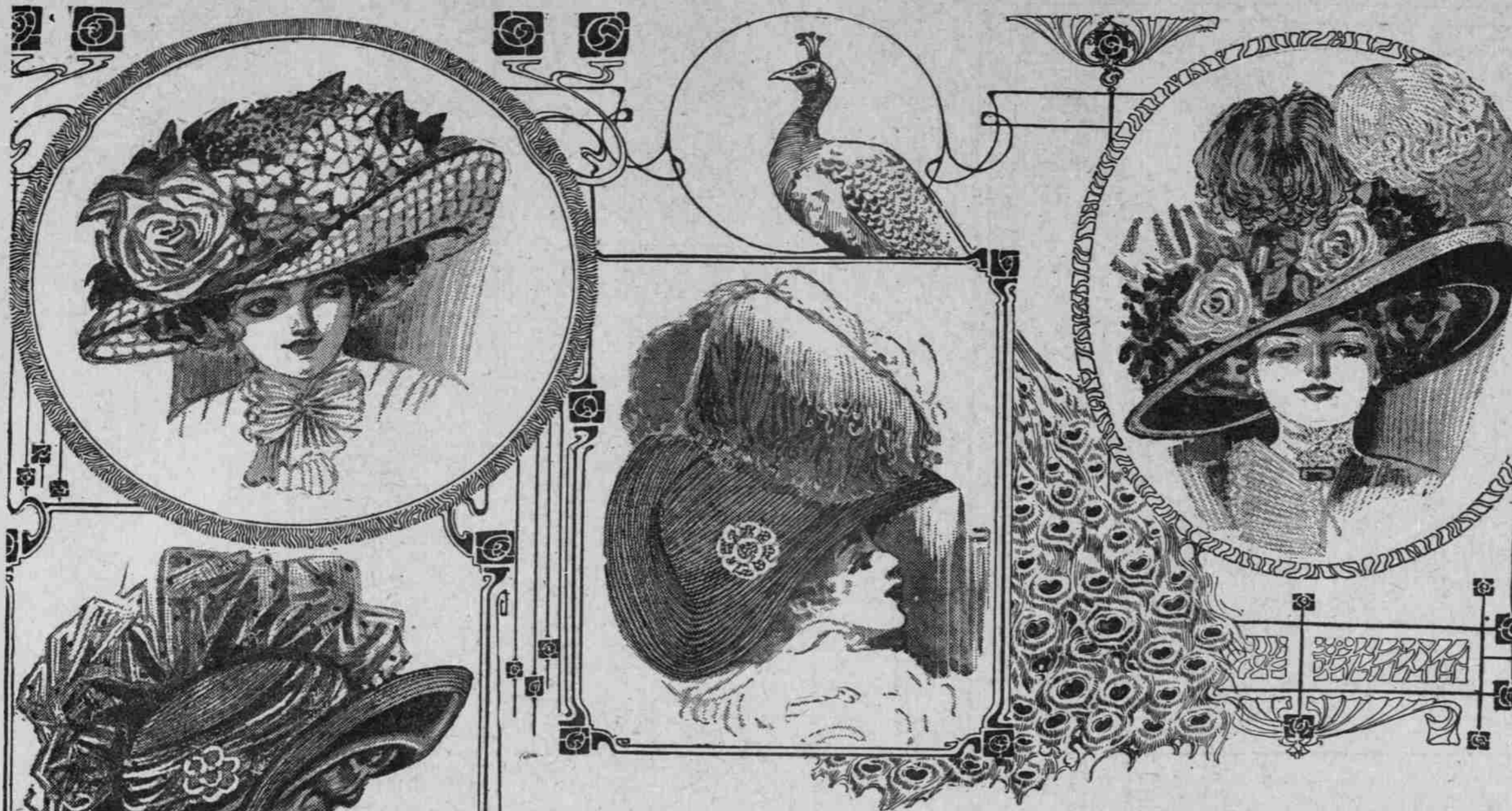


FLOWER-LADEN HATS MILLINERS' MANDATE



of fine maline formed into petals have the regular flower centers and are used in the semblance of the cabbage rose, chrysanthemum or dahlia on many of the smaller hats. The leaves are sometimes traced with gold or silver veining to give the touch of metal so desirable.

The dress hats are developed in a wide variety of net and lace. Willow plumes and aigrettes are used almost exclusively in the trimming and the Gainsborough styles prevail. One stunning model is of Milan straw, with the upper brim covered with black velvet. It is caught up sharply on the side with a white heron aigrette and pink coral bead cabochon. Another charming hat that made one think of garden parties and Dolly Varden, was a white silk hat in a drooping shape, covered entirely with black Chantilly lace. At one side of the crown the lace had been fashioned into a feathery bow, while at the other tiny pink moss roses were smuggled into the folds of the lace that encircled the crown.

The Wonder Millinery

ORIGINATORS AND IMPORTERS OF CORRECT MODES AT POPULAR PRICES

THE LARGEST MILLINERY HOUSE IN THE WEST



THE WONDER MILLINERY

CORNER MORRISON AND FIRST STREETS

BY RENE MANFIELD.
I took one rose to make the Winter hat. It will take more than a dozen to make the smart Spring and Summer confection. A fashion that permitted a woman to close her eyes, drop a single blossom or bow or rosette on some corner of a rakish shape, stab the crown with a hatpin and sail forth correctly bonneted would be necessarily short-lived. Or with their unadorned headgear? roars the powers that be. Sotto voce: "It's bad for the trade." So all signs seem to indicate that we will stagger under cartloads of blossoms before the end of the Summer.

The advance styles show moderation in their use, as well as in the new shapes, however, and though one model had pink roses standing upright over the whole top of the crown, surrounded by a heavy hedge of white lilacs—all of which suggested watering-cans and pruning-shears—the most conservative woman should be able to find something to her liking.

New color schemes rather than new shapes are the novelties of the season. The Russian turban that has been so popular during the Winter will take a new lease of life, at least for the early Spring, appearing in straw, maline and sometimes in silk, such as pongee, to match the costume. These are trimmed with flowers, sometimes in bunches at the side, sometimes having garlands of tiny roses festooned about them, sometimes having the whole top of the crown made solid of flowers. One striking turban of black net had a crown of this sort on which pink roses were used, the color being softened by a loose veiling of net caught in here and there with a tan o' shanter effect.

The maline turbans may have a cluster of flowers nestling in their perishable folds, or may be given a jaunty dash by shirred and wired maline simulating wings. A delectable color harmony was achieved by a bunch of ragged silk roses in a pastel pink, crushed among the folds of a pinkish lavender maline turban.

The cavalier style with its wide brim rolling gracefully on the left side is perhaps the most popular shape for Spring, because of its particular adaptability for flower trimming, and the larger sailor is much in evidence. Scarcely a hat of this character is seen without a facing of satin, velvet or taffeta. A novel feature is the covering of the top of the brim with satin or velvet, the under part remaining of the uncovered straw. When the brim is faced underneath often the crown is smoothly covered with the same material. Black maline and black net are much used in the dress hats in the cavalier styles, bound with velvet, satin or cloth of gold. A bunch of roses and violets formed the trimming of a moderate sailor shape which had the appearance of being made entirely from gold braid about an inch wide, stitched flat together.

Leghorns, rolled easily at the side, or turned up sharply at the back, vie for approval with the variations of the tricorne which are used for both dress and tailored hats. Hair and hemp shapes, chip and Milans are greatly in demand. For the street hats large bows of straw or ribbon or velvet, made into the stiff pump bow, give a perkiness to the sometimes clumsy looking turbans. The long, popular mushroom brim, under which a woman might look like a demure mouse, or an inquisitive squirrel, is seen no more. It has been given a twist here and a flare there till it has quite lost its drooping reticence. But its offspring, the poke bon-

net, is here, with huge bows at the back and gay roses to the front that belie its modest character. One of these delightful creations was of pink satin covered with ecru lace. A pink aigrette at the left and a huge bow of brown velvet at the back formed the trimming. Sometimes demi-plumes are used in the back in place of the bow. But a note of warning should be sounded long and loud. These fascinating chapeaux are anything but fascinating above and around a face that has lost the round curves and the fresh color of youth. Matrons and spinsters, beware!

The introduction of a touch of brilliant scarlet on many of the newest hats amounts almost to a craze. A band of ribbon velvet around the crown, a scarlet wing, a velvet facing—the smartest hats show these chic effects. The brilliant poinsetta, whose velvet richness was so striking against the fur turbans of Winter, has blossomed into Summer usage with petals of silk and linen. Great clusters of them are used at the side of wide-brimmed hats, falling over the up-turned brim and resting on the hair. Cherries are the only fruit seen on the hats as yet, but these are used in striking ways. One leghorn of sailor shape, had a fold of scarlet velvet around the crown. A huge bunch of cherries was fastened to the left side of the crown, and through a slit in the brim a portion of it was allowed to hang or rather dangle over the ear.

A Spanish turban, faced with black velvet, was most effectively trimmed with three black pompons from the center of which sprang a scarlet aigrette. Another turban of Tuscan straw was simply decorated with a rosette of changeable taffeta. These changeable effects it is expected will be much used, especially in the malines. Turbans made entirely of flowers are again being worn. Lace flowers which are made of brussels lace

Spring Opening

The Ladies' Haberdashery



We are showing a complete display of Easter Millinery in the latest designs in Hats, Ladies' Suits, etc.

Your Patronage Solicited
Adams, Conley Co.
1318 11th Street, Bet. Washington and Alder
ORDER WORK our SPECIALTY

PROPER EASTER MILLINERY

Revealing latest modes and exploiting newest shapes, colors and Materials in harmonious and charming profusion.

Our recently enlarged salesroom enables us to make a most extensive display, embracing Paris and New York models, as well as adaptations and originals from the hands of our own designers. Each the product of an individual artist, each expressing some particular phase of the hour.

The "Castleton" New York tailored suit hats, selling at \$10 to \$20, are smart, modish, distinctive and are positively never duplicated or copied.

Fraleley Bros. 212-214 THIRD CORNER SALMON



Exclusive Milliners
QUALITY AND SATISFACTION
Fisher Millinery Co.
352 MORRISON STREET



SCOTT-KROGH COMPANY
415 ALDER STREET
Announce that they are now showing their
SPRING LINE OF MILLINERY
Dresses, Waists, Skirts, Neckwear, Belts, Corsets and Easter Novelties.



Glorious Easter Millinery

Our Millinery selection is now at its best. The season's smartest styles, both in colors and shapes, are here. Every demand of fashion fulfilled. A showing we are proud of and one that will meet the most exacting demands of stylish dressers. A noteworthy feature of our millinery is the very moderate prices, ranging in—Trimmed Hats, from \$1.95 upwards; high class Trimmed Hats, \$5.00, \$6.00, \$7.50, \$8.00, \$10.00 to \$25.00.

Hamburger's
145-147 Second Street, Between Alder and Morrison.