

The Landscape Beautiful, by Frank A. Waugh. Illustrated. 21. Orange Judd Co., New York City.

A plea for the love of the beautiful in nature and the home... The book has a sort of special message just now in this city, where we are talking of a system of parks and boulevards...

The author is Professor of Horticulture and landscape gardening at Massachusetts Agricultural College, Amherst, Mass., and he is apparently an enthusiast along the lines of nature study...

Some of the papers now issued for public approval were originally prepared as essays for use in Professor Waugh's classes at the college...

"The Landscape Beautiful" appeals especially to school and college teachers, nature lovers, artists and art students and landscape architects...

One of the most interesting features of the book is the illustrations... The illustrations are unusually attractive and numerous...

The Day of Souls, by Charles Tenney Jackson. Illustrated. 1.50. The Bobbs-Merrill Co., Indianapolis, Ind.

This is by no means a dull novel, and there is never any dulling in the reading it goes to sleep... The story that urges you to the very end...

The Danger Trail, by James Oliver Curzon. Illustrated. The Bobbs-Merrill Co., Indianapolis, Ind.

"THE ONLY CONFERS FAVORS GENEROUSLY WHO APPEARS, WHEN THEY ARE ONCE CONFERRED, TO REMEMBER THEM NO MORE."



ILLUSTRATION FROM "The Landscape Beautiful" By Professor Frank A. Waugh.

home, where he had hung at an amateur performance of "H. M. St. Pinatore," and had fallen in love with the "smart-looking city chap..."

The Closed Territory, by Edgar Becher. Boston. Illustrated. 1.75. A. C. McClurg & Co., Chicago, Ill.

My Own Philosophy, by Werner Eggerth. 1.50. Werner Eggerth, Spokane, Wash.

The Danger Trail, by James Oliver Curzon. Illustrated. The Bobbs-Merrill Co., Indianapolis, Ind.

Women and Their Trades, by Elizabeth Hearsey Butler. Hines, 211 W. Third St., Portland, Ore.

Women and Their Trades, by Elizabeth Hearsey Butler. Hines, 211 W. Third St., Portland, Ore.

Mr. Meredith's youth, published in 1891, at after life—recall the creations of an immature season, no apology is needed in this case...

What is Socialism? by Regina Wright Kaufman. \$1.25. Moffat, Yard & Co., New York.

Robert Emmet's Woe, by Edgar C. Blain. \$1. Cochrane Publishing Co., New York City.

How Shall the Little Ones Rest? by Florence G. Jones. 1.00. The University Extension Society, New York.

Over the Quebecs, by Anna Chapin Ray. \$1.50. Little, Brown, Boston.

First, Park and Madison streets—Rev. I. B. Jones, pastor. 9:45 Bible school; 11:15 divine worship...

Second Church of Christ, Scientist, Woodlawn street—Rev. E. A. Leonard...

St. Stephen's, East Twelfth and Belmont streets—Rev. J. E. Simpson...

St. Andrew's, North and Alberta streets—Rev. J. E. Simpson...

St. Lawrence's, Third and Sherman streets—Rev. J. E. Simpson...

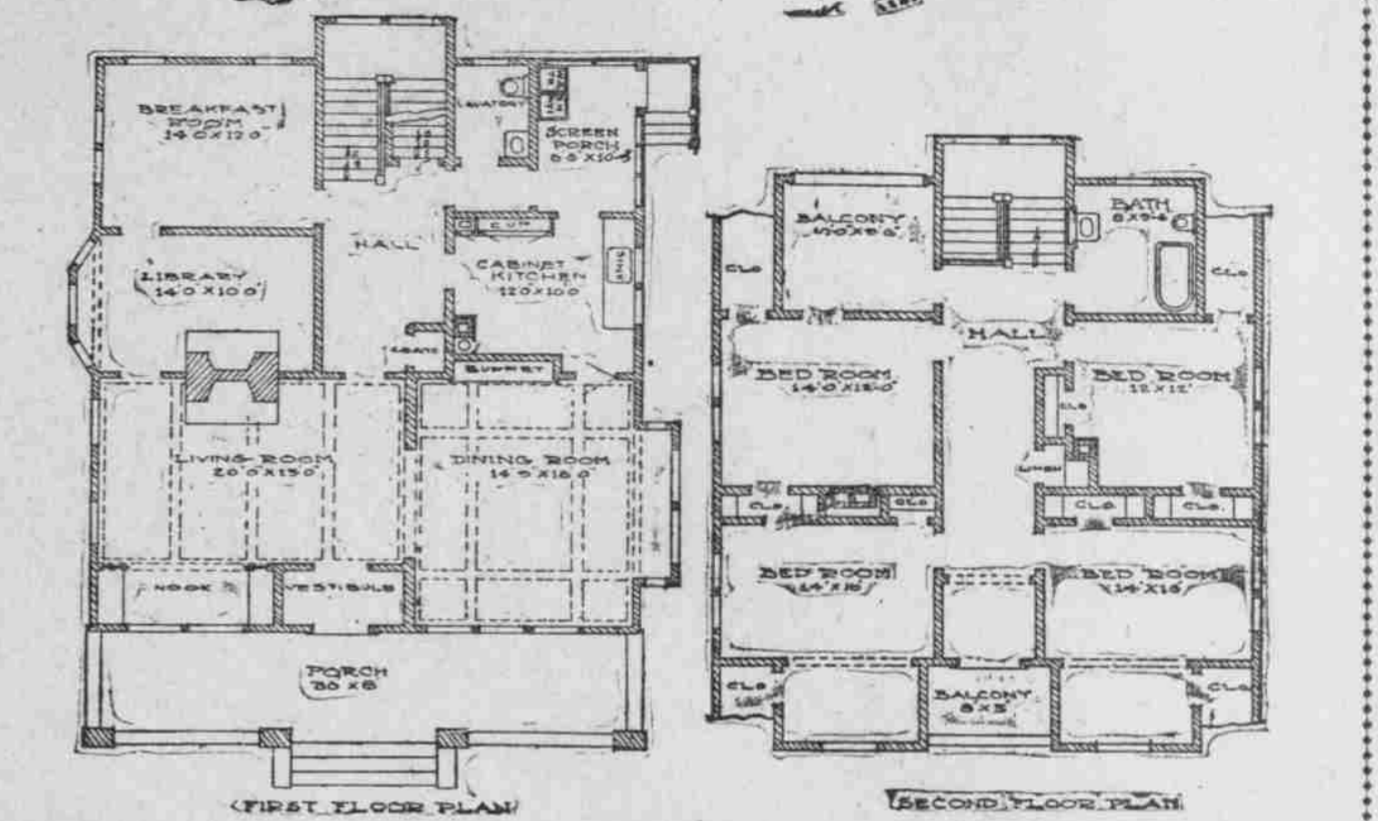
St. Patrick's, Ninth and Sawyer streets—Rev. J. E. Simpson...

St. James' Episcopal, East Twelfth and Belmont streets—Rev. J. E. Simpson...

St. James' Episcopal, East Twelfth and Belmont streets—Rev. J. E. Simpson...

St. James' Episcopal, East Twelfth and Belmont streets—Rev. J. E. Simpson...

A BUNGALOW ON SWISS CHALET LINES



As an evidence of the widespread popularity of the California bungalow, we illustrate this week a home which is now under course of construction...

The building is 36x50 feet over all and in Maryland, built with the construction which that climate requires...

with colored mortar. The ceilings are nine feet high on the first floor and eight and one-half feet high in the second floor.

UNITED EVANGELICAL. First, East Sixteenth and Poplar streets—Rev. H. A. Deck, pastor...

UNIVERSALIST. Church of the Good Tidings, Broadway and East Twenty-fourth streets—Rev. James D. Kelly, pastor...

M. E. CHURCH SOUTH. First, Union Avenue and South Main street—Rev. J. E. Simpson...

FRESHLYERIAN. First, Alder and Twelfth—Rev. William H. Poulkes, D. D., minister...

EVANGELICAL ASSOCIATION. First, Spruce street—Rev. J. E. Simpson...

LUTHERAN. St. James' Episcopal, East Twelfth and Belmont streets—Rev. J. E. Simpson...

Evangelical 2100, Salmon and Chapman streets—Rev. J. E. Simpson...

Advertisement for Marth Washington Comfort Shoes, featuring an illustration of a woman's face and text describing the shoes' features and availability.