

SUBURBAN GROWTH SURPRISES MANY

Visitors to Aviation Meet See Progress of Rose City Park District.

MANY BIG PROJECTS UP

East Twenty-ninth Street Will Be Opened to Site of Reed Institute in Eastmoreland and Also Northward.

While no large sales were made on the East Side the past week, the average of transfers was maintained in all the new additions. The great crowd which visited Rose City Park district to attend the aviation meet early in the week saw vast improvements under way in that district and in Laurelhurst, and as it was the first visit there for many of them, the trip was a revelation.

Perhaps the most important project developed is the movement to make East Thirty-ninth street a highway to the Reed Institute in Eastmoreland, and also to extend it northward through the Rose City Park district. This street has been opened, but the desire is to make it 80 feet wide.

Another important project is to pave a chain of streets with hard surface improvement from the east end of the proposed Broadway bridge through North Albina and the Peninsula to the North Park road cut. Contracts for paving part of these streets have been let, and proceedings are under way for the remainder. The streets for this highway are Lombard, Patton, and Mississippi avenues. In the Waybright Addition contracts for 3 1/2 miles of hard-surfacing to be let this Spring. This work will be let in two contracts.

There is no mistaking the remarkable effect of the location of the Reed Institute in the South East Side. Of course the platting of the Crystal Spring farm in Eastmoreland and Eastmoreland was the beginning of a progressive movement, as this big farm had long stood in the way of development. There has been a situation all through the South East Side since the Reed Institute was located in Eastmoreland.

Milwaukee avenue has at last been made a street to the south boundaries of the city, and is now subject to the control of the city for its entire length. Before, it was both a street and a county road, with the result that it was never in good condition. It will now be possible to have it paved to the end. A contract to pave it between Division and Holgate streets with Haslam has been let, and the work will be done this Spring. Owing to the rapid settlement in Westmoreland and Eastmoreland and Sellwood, a well-paved street to the south has become a necessity.

Extensive improvements are under way in Laurelhurst. Water mains are scattered through the north side of the tract ready to be laid. Grading also is in progress for streets which are to be improved with hard-surface pavements. Basements of a number of new residences are being excavated all over the tract. Development of this addition means much for Central East Portland and especially to the district tributary to the Burnside bridge.

Perhaps 200 new houses, of high class will be erected in Laurelhurst this year. In order to handle the increased travel over the East Ankeny car line the Portland Railway, Light & Power Company will lay a track down the Sandy road from East Twenty-eight street to East Davis street and thence to East Tenth and East Burnside streets. This new route will be much shorter than the one on East Ankeny, which is now being used by the Rose City, East Ankeny and Montavilla cars. It is expected that the traffic from the Laurelhurst and Rose City district will be doubled during the year.

Eight new residences will be erected at once on East Gilsan and East Eighty-sixth street, Montavilla, by E. Laursen, at a cost of \$200 each. It is the largest building contract for residences yet let in that suburb. Work will be started at once. The two-story frame building at East Sixty-third street and the Busse Line road, costing \$15,000, is being completed. On the second floor there is a fine public hall.

The Sellwood Townsite Company has sold a lot, 50 by 100, on East Thirtieth street, between Tenino and Tacoma streets, to A. Robertson. Mr. Robertson bought with the intention of erecting a building for a mercantile establishment. W. M. Odokirk is erecting one of the largest residences in Sellwood on Milwaukee road. It will contain 15 rooms and is 30 by 40 feet. W. H. Gordon is having three two-story dwellings constructed in Sellwood, which will cost \$5000. Louis Kneer is erecting a seven-room resi-

PARK STREET BUSY

Recent Sales Call Attention to Active Locality.

VALUES ARE INCREASING

Many Deals Made for Properties That Are to Be Improved with Fine Buildings—Street Heretofore Has Been Inactive.

The real estate activity which continues to exist all over Portland has been especially noticeable all along Park and West Park streets, the sales there being

PARK STREET BUSY

on the investment. This sale was made by Frederick Strong.

VALUES ARE INCREASING

Another of these lots was transferred last week for \$11,000. This is a single inside lot, 50x100 feet, on West Park, near Hall street. In the section north of Washington street the most noticeable Park-street sale which has been consummated recently was for the F. Breske block, 50x60 feet, on the west side of Park, between Stark and Oak. This is improved with a four-story brick building occupied by Bushong & Co. and by the Pacific Monthly Company. The price was \$100,000.

Business Lot Brings \$14,000. HOOD RIVER, Or., March 12—(Spe-

PARK STREET BUSY

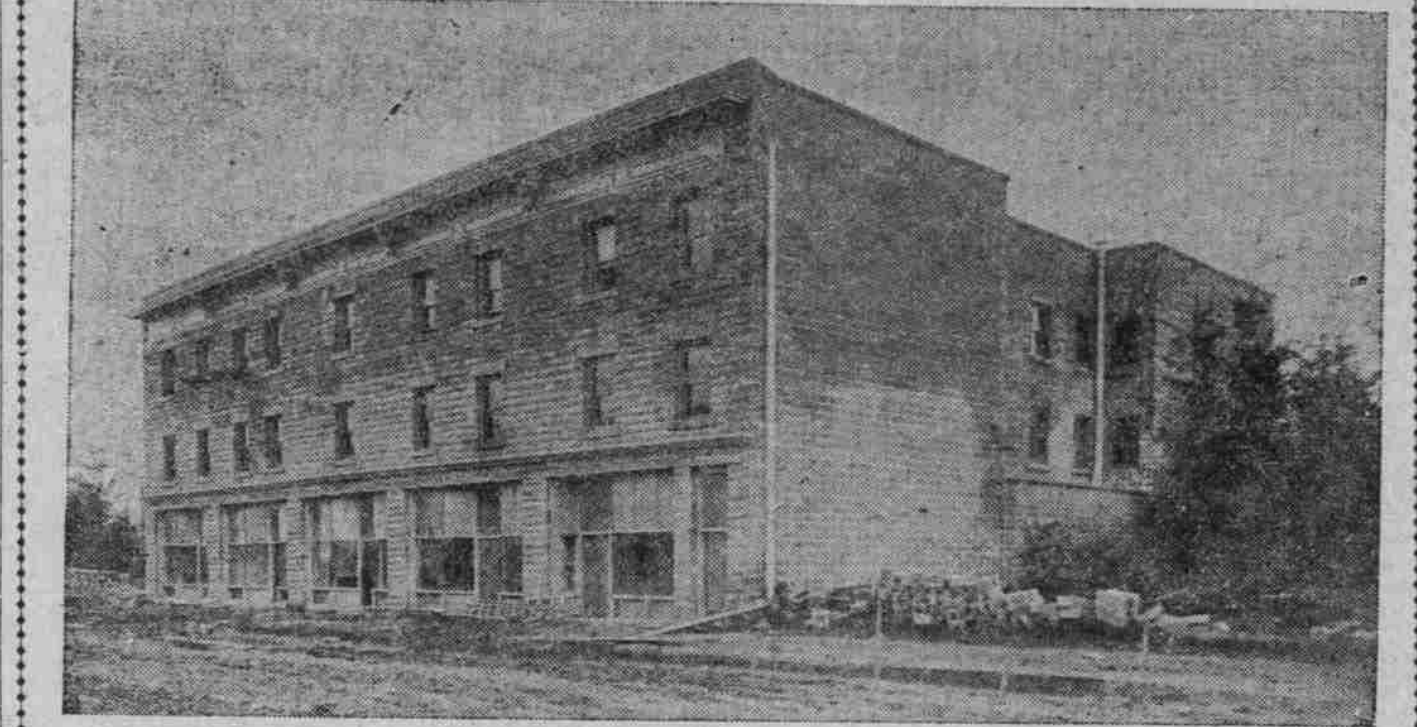
At Main and West Park streets a quarter block changed hands recently when Mrs. Hedwig Smith, C. J. Schinabel and Walter Smith bought the 100x100 feet from H. H. Prouty and A. H. Massey, acting for the College Endowment Association. The total price was \$41,000, the quarter having been bought in two parcels. D. Parker Bryon & Co. made this sale, the purchasers having announced an intention to erect a family hotel on the site. This may, however, be set aside on account of an offer made last week for the property at such a large figure that the owners are now contemplating selling.

VALUES ARE INCREASING

Another of these lots was transferred last week for \$11,000. This is a single inside lot, 50x100 feet, on West Park, near Hall street. In the section north of Washington street the most noticeable Park-street sale which has been consummated recently was for the F. Breske block, 50x60 feet, on the west side of Park, between Stark and Oak. This is improved with a four-story brick building occupied by Bushong & Co. and by the Pacific Monthly Company. The price was \$100,000.

Business Lot Brings \$14,000. HOOD RIVER, Or., March 12—(Spe-

KENTON GETS FINE CONCRETE HOTEL TO COST \$35,000 WHEN FINISHED.



NINETY-ROOM HOSTELRY WHICH IS NOW NEARING COMPLETION IN PENINSULA DISTRICT. The three-story reinforced concrete hotel building at Kenton, the manufacturing suburb on the Peninsula, is nearing completion. It is being built by the Kenton Building Company for Porter & Johnson, and the cost of the structure completed will be \$35,000. It contains 90 rooms, besides the rooms for business on the first floor for stores, the office, lobby and dining-room. It is a structure that would do credit even to an older district than Kenton.

HALF BLOCK IS SITE

THOMPSON ESTATE BUILDS IN NORTH PORTLAND.

Brick Work Is Finished on Three-Story Structure at Second, Third and Davis.

One of the largest buildings which has been erected for a number of years in the business district of North Portland is now under construction for the R. R. Thompson estate on the north side of Davis street, between Second and Third. The building is a three-story structure covering an entire half block and is built for hotel and mercantile purposes. The plans were prepared by Benne, Hendricks & Thompson, architects, and the work is now progressing rapidly, practically all the brick work being placed. The total cost is to be about \$90,000.

The structure is of a buff-colored pressed brick of mill construction. The first floor has been set aside for five stores and a saloon on the Third street frontage and the same on the Second street frontage. On Davis street will be one store, a restaurant and a large lobby for the hotel on the upper floor. There is also a space set aside for a baggage room for the hotel on the first floor and a kitchen for the restaurant. Work has now progressed to such an extent that it is believed the building will be finished by next month.

On the two upper floors there are four light courts. There are 95 rooms on each floor, 36 on each floor fronting on the street. All are equipped with hot and cold water. The baths and toilets in the building are all tiled, the plumbing being far better than is ordinarily placed in rooming houses.

Examining Surgeon Is Named. OREGONIAN NEWS BUREAU, Washington, March 12—Dr. F. H. Vincil, of Roseburg, has been appointed pension examining surgeon at Roseburg.

HALF BLOCK IS SITE

THOMPSON ESTATE BUILDS IN NORTH PORTLAND.

Brick Work Is Finished on Three-Story Structure at Second, Third and Davis.

One of the largest buildings which has been erected for a number of years in the business district of North Portland is now under construction for the R. R. Thompson estate on the north side of Davis street, between Second and Third. The building is a three-story structure covering an entire half block and is built for hotel and mercantile purposes. The plans were prepared by Benne, Hendricks & Thompson, architects, and the work is now progressing rapidly, practically all the brick work being placed. The total cost is to be about \$90,000.

The structure is of a buff-colored pressed brick of mill construction. The first floor has been set aside for five stores and a saloon on the Third street frontage and the same on the Second street frontage. On Davis street will be one store, a restaurant and a large lobby for the hotel on the upper floor. There is also a space set aside for a baggage room for the hotel on the first floor and a kitchen for the restaurant. Work has now progressed to such an extent that it is believed the building will be finished by next month.

On the two upper floors there are four light courts. There are 95 rooms on each floor, 36 on each floor fronting on the street. All are equipped with hot and cold water. The baths and toilets in the building are all tiled, the plumbing being far better than is ordinarily placed in rooming houses.

Examining Surgeon Is Named. OREGONIAN NEWS BUREAU, Washington, March 12—Dr. F. H. Vincil, of Roseburg, has been appointed pension examining surgeon at Roseburg.

HALF BLOCK IS SITE

THOMPSON ESTATE BUILDS IN NORTH PORTLAND.

Brick Work Is Finished on Three-Story Structure at Second, Third and Davis.

One of the largest buildings which has been erected for a number of years in the business district of North Portland is now under construction for the R. R. Thompson estate on the north side of Davis street, between Second and Third. The building is a three-story structure covering an entire half block and is built for hotel and mercantile purposes. The plans were prepared by Benne, Hendricks & Thompson, architects, and the work is now progressing rapidly, practically all the brick work being placed. The total cost is to be about \$90,000.

The structure is of a buff-colored pressed brick of mill construction. The first floor has been set aside for five stores and a saloon on the Third street frontage and the same on the Second street frontage. On Davis street will be one store, a restaurant and a large lobby for the hotel on the upper floor. There is also a space set aside for a baggage room for the hotel on the first floor and a kitchen for the restaurant. Work has now progressed to such an extent that it is believed the building will be finished by next month.

On the two upper floors there are four light courts. There are 95 rooms on each floor, 36 on each floor fronting on the street. All are equipped with hot and cold water. The baths and toilets in the building are all tiled, the plumbing being far better than is ordinarily placed in rooming houses.

Examining Surgeon Is Named. OREGONIAN NEWS BUREAU, Washington, March 12—Dr. F. H. Vincil, of Roseburg, has been appointed pension examining surgeon at Roseburg.

A Splendid Feature About Neah-kah-nie Mountain You May Spend the Coming Summer There, in Comfort

Provisions are now being made at the Neah-kah-nie ranch house to accommodate a great many people and families during the coming Summer.

This accommodation is unique. It includes tent living, ranch food, from the garden, dairy and field of this wonderful 1000-acre seashore property.

Without such modern improvements as light, water, streets and sidewalks, Neah-kah-nie is far ahead of any improved beach resort on the Oregon coast.

Even at that, Neah-kah-nie has the purest water, the most beautiful, shady trails through the woods, and all the sublime grandeur of such sunsets as have made the Pacific Coast a source of admiration for the whole world.

Environed by the mountain of Neah-kah-nie, the great Pacific, the deep green forests of Tillamook County, the placid surface of Nehalem Bay and overspread by the azure Oregon sky, a Summer's rest at Neah-kah-nie is equivalent to a year at Palm Beach, Coronado, Atlantic City or any other celebrated resting place in America.

Contradiction of Neah-kah-nie's claims to preference is impossible. Its superiority is acknowledged. Its beauty is incomparable. Its comforts, natural manifestations, advantages are too wonderful to permit of satisfactory description.

Yet, prices at Neah-kah-nie, for bungalow, cottage or Summer home locations are ONE-HALF THOSE PREVAILING AT ANY OTHER IMPROVED BEACH.

Call at the office and secure a copy of the \$2000 portfolio containing story and picture of the most romantic section of the Pacific Coast. This book is not mailed upon request, except to out-of-town inquirers.

J. W. Ferguson, Jr.
209-210-211 Board of Trade

EASTMORELAND

Every man and woman in Portland today knows what Eastmoreland is. We want more of you to know WHERE it is. Every person over 15 years of age has heard of, and knows that Reed Institute is a huge university movement that is centering in Eastmoreland and that is beginning to throw out its influence in every direction.

We want more of you to see the site upon which Reed Institute will be placed. Go out today and spend the day around that pretty Crystal Springs Lake. Let nature inspire you with the gorgeousness of her beauties—her Eastmoreland beauties. Take the Sellwood car and get off at Tolman avenue. Use one of our automobiles if you want to.

Columbia Trust Company Board of Trade Building

EASTMORELAND



R. R. THOMPSON ESTATE BLOCK, AT SECOND, THIRD AND DAVIS STREETS.