

### PAVING AIDS VALUES

Belmont - Street Improvement  
Trebles Property Worth.

### CONTRACT ALL COMPLETED

Executive Board Will Accept Work  
November 26—Third Largest Job  
Ever Undertaken by City—30  
New Houses Dot District.

On Belmont street, from East Fortieth street to East Sixty-second street, a distance of 22 blocks, there has just been completed the third largest paving contract let by the City of Portland. At an expense of \$85,000, the Pacific Bridge Company, using the patent concrete Warren Brothers' Company, of Boston, has paved

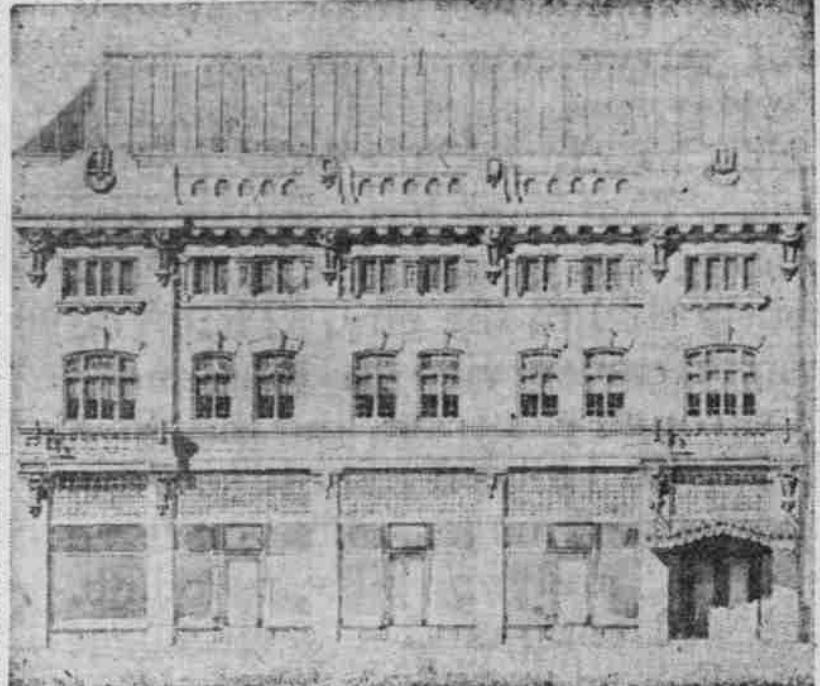
Realty Company has made the following recent sales: A. L. Albright, seven-room home and lot, for \$3000; L. J. West, two lots in Vernon for \$1250, for building site; D. Mistrason, lot in block 58 for \$1500, a residence site. Work has been started on the foundation of two bungalows at East Twenty-third and Alberta streets, each to cost \$2500.

The John B. Matthews Real Estate Company has sold 13 lots in Vernon. F. Skogstih bought the northwest corner of East Fifteenth and Emerson streets, 100 by 102, for \$1000, as a site for two \$2000 residences. Mrs. W. B. Green has bought the southeast corner of East Thirtieth and Prescott streets, 100 by 102, as a site for a \$2500 residence. W. B. Donahue, a local builder, has purchased a lot at Vernon for \$850, and will put up a building at once.

In this section a large amount of street improvements is to be undertaken. Alberta street is to be improved with hard surface paving between East Fourteenth and East Thirtieth streets, proceedings having been renewed by Councilman Ellis. Owing to the change of grade on this street, the former proceedings had to be rescinded and new ones started.

At the southeast corner of Alberta street and Union avenue, excavations have been made for a brick building to be erected by O'Shea Brothers, owners of the quarter-block. It is announced

### ARTISTIC LODGE BUILDING PLANNED BY LOCAL SOCIETY



—Emil Schacht & Son, Architects.  
SWISS HALL TO BE ERECTED ON THIRD STREET NEAR JEFFERSON.

down a bit of the pavement, with concrete sidewalks and curbing. This has been inspected, found according to specification, and at the next meeting of the Executive Board, November 26, will be formally accepted by the city.

Of the \$85,000 to be expended for this pavement, about \$25,000 will come out of the Portland Railway, Light & Power Company, which has laid a double track of six-inch rails the entire distance, paving between the rails with Belgian blocks, laid in cement. This double-track pavement is as good an example of the kind as there is in the city, and the job is a thoroughly finished one. Water mains, gas mains and sewers have all been laid, and for part of the distance an underground conduit has been put in for telephone wires and cables. Service pipes have been run from the water and gas mains to the curb, so it will be unnecessary to tear up the surface of the street when a property owner wants connection with the utility pipes.

This \$55,000 pavement represents the third largest contract the city has ever let. Hawthorne avenue, at \$180,000, which is not yet done, and Union avenue, at \$140,000, which was finished last Saturday, each will include a great outlay. Belmont street was begun in July, 1908, and five months have been needed to complete it. Of this time two months have been wasted by the contractors in waiting for the streetcar company to lay its rails. Difficulty in getting steel from the East is assigned by the latter as the cause of this delay.

In 1882 the right of way owned by Campbell & Swigert and used by them for their steam line to Mount Tabor, was dedicated as Belmont street by the city. Since then it has been used more and more as a thoroughfare, until now it is the main channel to Mount Tabor, through a large and rapidly-growing district. Until last summer, when the paving was begun, this street had always been more or less impassable, owing to the low, flat country through which it ran. At certain seasons of the year much of the way was completely flooded.

Now the district through which this street runs has been transformed from country to city. And not only that, but the value of property traversed by Belmont street is continually increasing. One man who owns a few lots just beyond Lona Fir Cemetery says his property has trebled in value since the pavement has been laid. Fine residences and slightly buildings are going up all along the street. One of the best buildings is the Glencoe school, now almost completed at a cost of \$100,000, which is said to be the handsomest school building in the city. Where once was pasture land and meadow is now dotted with pretty bungalows and pleasant cottages. By actual count 20 new houses have been started since the Belmont-street pavement has been down.

### ALBERTA IS THRIVING

DISTRICT TAKES PART IN REALTY ACTIVITY.

Investors Buy Property and Builders Continue to Improve Sites Purchased.

H. A. Walker, builder and contractor, of Denver, Col., is investing largely in property along Alberta street, and in other portions of the East Side. Mr. Walker is erecting a \$5000 two-story office building on Alberta street. On completion of this structure, Mr. Walker will at once start on the erection of other buildings on lots he has secured in the Vernon district.

In this district N. Christensen has purchased the southeast corner of East Eleventh and Alberta streets for \$1500, and has started on a \$3000 frame store building 44 by 45 feet. E. Rosenstiel is building a seven-room home at East Fifteenth street, at a cost of \$3500. Mr. Rosenstiel has just completed a furniture store building on Alberta and East Twenty-third streets at a cost of \$7000. Mr. Maranelli recently purchased a lot on block 25, Alberta, for \$1100, and will put up a store building. In this section the Alberta

# HILLMAN

## JUNCTION OF FOUR RAILROADS

THE LEADING CITY OF CENTRAL OREGON  
THE HEART OF THE DESCHUTES VALLEY  
RAILROAD CENTER OF CROOK COUNTY



### THE HILL LINE

The Oregon Trunk has purchased from the Crook County Investment Company, owner of HILLMAN, a 300-foot right of way through the city, and in the deed of conveyance the railroad is required to build a PASSENGER AND FREIGHT DEPOT, provide switching facilities and warehouses, adequate for the handling of the enormous freight that is certain to originate at this point. Trains will probably be running into HILLMAN by October next year. These are facts, confirmed by those who actually know what is being done.

### TWO EMPIRE BUILDERS

The giants of commerce, Hill and Harriman, foreseeing the tremendous opportunity for freight handling in the great Deschutes Valley, are rushing their two roads, the Oregon Trunk and the Deschutes Railway (the Harriman line), toward HILLMAN as fast as human energy can build. Work has progressed to within 5 miles of HILLMAN. Another road, electric, is proposed from HILLMAN, up the Crooked River to Prineville, the county seat, 19 miles away. Still another is contemplated westward to Sisters, 25 miles, and the Matolas Valley, 40 miles.



### THE HARRIMAN LINE

The O. R. & N., or Deschutes Railroad, as it is named, is building as rapidly as Hill. Nearly 4000 men, 900 teams and six steam shovels are working night and day. Visions of gigantic grain crops, thousands of acres of magnificent timber and millions of acres of growing products inspire the great railroad builders to hurry with might and main into this marvelous, virgin empire of unprecedented wealth. What awaits the railroads stares the investor in the face—great returns for the money.



### OPPORTUNITY OPPORTUNITY

### INVEST—INVEST—INVEST

Everyone desirous of participating in the unexampled prosperity of Central Oregon can now lay the foundation of a new fortune in this new empire at the following prices:

- Inside Residence Lots, Your choice . . . . . \$10
- Business Section, Inside Lots, only . . . . . \$50
- Corner Residence Lots, From \$25 to . . . . . \$40
- Corners in the Business Section, \$75 to . . . . . \$100

THE PRICE OF EVERY LOT WILL BE RAISED DEC. 15, '09  
Seize This Opportunity Without Delay or Hesitation—Illustrated and Descriptive Pamphlet Mailed Free

## CROOK COUNTY INVESTMENT COMPANY

PHONES A7306, Main 1984 COOPER & TAYLOR, Selling Agents 207-208-209 HENRY BLD. PORTLAND, OR.

### TENNIS CLUB ENLARGES

ADDITIONAL PROPERTY IN IRVINGTON SECURED.

Members Now Own Clubhouse and Grounds and Will Add Eight Lots for Playground.

Reorganization of the Irvington Tennis Club is now an accomplished fact. According to the new arrangements the members now own and control the clubhouse and grounds.

### FINE HOME RECENTLY COMPLETED.



RESIDENCE OF F. F. BRANDES.

house and grounds. The property has been taken over by the new organization of members, in all about 130, who subscribed the money with which the property was purchased from the old organization.

The club now owns the clubhouse and grounds, and the next step will be to secure the eight lots connected with the club grounds on the north.

An option was secured on these lots some time ago and will be taken up in a short time. More than \$2000 has been raised to purchase these grounds and the remainder will be secured in time from membership fees. These eight lots are to be mapped out into a children's playground. The plans of these grounds will be prepared by a woman who has had much experience in such matters.

The north part of the double block is beautiful property, high and entirely surrounded by hard-surface pavement, as is the entire double block that comprises the club property. The south part of the block is the part occupied by the clubhouse and tennis courts.

Under the new organization plan the club is classified with the Malmomath Athletic and other clubs of the city and is excused from the burden of taxation. The property has been assessed at \$2,000 on to pay taxes. L. J. Wentworth is president of the club.

William F. Woodward has been one of the main factors in accomplishing the reorganization by which is obtained the ownership and control of the beautiful clubhouse and grounds and the eight lots for children's playground. Mr. Woodward has been a tower of strength to the organization movement and especially in the movement to secure the northern portion of the double block. The property is on Thompson street, between East Twenty-second and Twenty-third streets.

### TURKEYS SOAR SKYWARD

Oakland Buyers Pay Farmers 22 1-2 Cents.

ROSEBURG, Or., Nov. 20.—(Special.)—The total turkey shipments from Roseburg will be 6000, from Oakland 6100, from Drain 400. E. G. Young & Co., of Oakland, paid the highest price to the raisers, which was 22 1/2 cents. Harness & Johnson, of this city, were the heaviest shippers with 2000.

The local merchants are offering 22 cents, and in preference to making the 18-mile haul to Oakland the nearby farmers are unloading this season's crop for 22 cents today.

There is considerable excitement in the local market, and the Oakland merchants have representatives here who will get several hundred birds, on account of the one-half cent advance they are paying. The birds will be shipped from here direct. This will be the banner price for the Douglas County turkey-

### MOVE TO DISBAR DE WOLFE

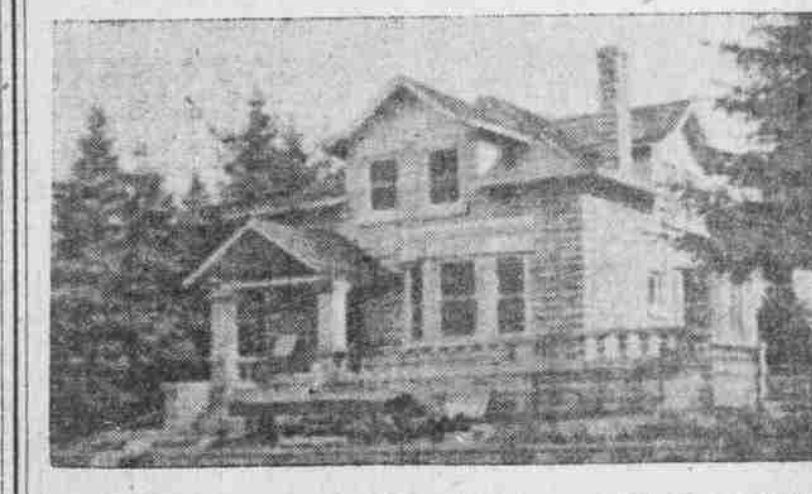
Bar Association to Make Charges Against Supreme Court Assailant.

OLYMPIA, Wash., Nov. 20.—Herbert De Wolfe, the attorney whose charges against the State Supreme Court brought about legislative investigation, is to be cited to answer disbarment charges.

raisers, and the first time the market has been in their favor.

### Sheep Healthy in Asotin.

ASOTIN, Wash., Nov. 20.—(Special.)—In the opinion of Livestock Inspector Henderson, of Clarkston, the sheep of this county are in good condition and most of the flocks are wholly without disease.



This is one of a number of beautiful houses which are being duplicated in any part of the city for \$3650. It has eight large rooms and is built of the best and most approved cement block. The above price includes full cement basement, furnace and piping, fireplace, gas and electric fixtures, hardwood floors, thorough plumbing, including bath, toilets and cement wash trays. You have the advantage of choosing your plans from a number of fine homes just finished. Interior modifications at same price.

SALTMARSH & SNODGRASS, 303 Lumbermen's Building