

TELEGRAPHS START RACE OVER DESERT

Cars Off on Dangerous Run From Los Angeles to Phoenix.

CAMP EQUIPMENT CARRIED

Contestants Expect to Lower the Record—Course Lays Through Sandy Wastes and Over Rough Roads in Hills.

LOS ANGELES, Nov. 6.—The Ison-Fraschini, with Max Polmans at the wheel, started at 3 o'clock tonight upon an automobile race of 80 miles from this city to Phoenix, Ariz., at intervals of 15 minutes was followed by the starting point by nine other cars. It is said to be the most difficult race in America.

WIFE TRAILS HER FAITHLESS SPOUSE

After Long Search of Year Begun in Houston, Tex., Finds Him With Alleged Affinity.

SAYS SHE WANTS REVENGE

Declares Miss Vivian Groves, Pretty Texas Schoolteacher, Has Done Everything to Break Up Family and Takes Her Husband.



A. J. Schureman, Son of Millionaire Parents in Chicago, Arrested on Complaint of His Wife.

Captain Jack and his warriors on the early morning of the day mentioned, is now the center of one of the most prosperous communities in the Klamath Basin, distant two and a half miles from the thriving town of Merrill in the second town of importance in Klamath County.

WIFE TRAILS HER FAITHLESS SPOUSE

After Long Search of Year Begun in Houston, Tex., Finds Him With Alleged Affinity.

SAYS SHE WANTS REVENGE

Declares Miss Vivian Groves, Pretty Texas Schoolteacher, Has Done Everything to Break Up Family and Takes Her Husband.

Trailing her husband and his alleged affinity for more than a year, Mrs. Arthur J. Schureman, of Houston, Tex., effected the arrest of the couple here Friday morning, at apartments at West Park and Morrison streets. The woman in the early morning of the day mentioned, is now the center of one of the most prosperous communities in the Klamath Basin, distant two and a half miles from the thriving town of Merrill in the second town of importance in Klamath County.

Unable to secure \$500 bail each, the amount fixed by Justice of the Peace County Jail, and did not secure their release until their arraignment yesterday afternoon, when Schureman's attorney, J. L. Schureman, of Houston, Tex., and L. B. Menefee, Percy Allen and F. L. Betsford were the bondsmen secured by the alleged elopers.

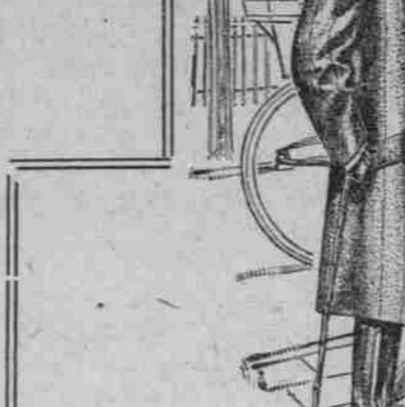
Men's Correct Furnishings



Shirts—Cluett, Star, E. & W., Wilson Bros., plain and pleated bosoms, separate and attached collars, \$1.00 to \$3.00.

Gloves—Fownes, Dents, Perrin's and Updegraff's; shades are tan, gray and easton, in mocha, suede, kid and dogskin, \$1.50 to \$2.50.

Benjamin Clothes



Perfect fitting, handsomely tailored, correctly styled, exclusive patterns. If you wish the best ready-to-wear clothes in the world we have them.

Suits, \$25 to \$45; Overcoats, \$20 to \$60; Raincoats, \$20 to \$40. Worn by the Best-Dressed Men.

Buffum & Pendleton



311 MORRISON, OPP. POSTOFFICE.

Knox Hats



Silk, Opera, Derbys, Soft Felts. \$4.00 to \$15.00.

Stetson—Complete assortment, newest styles. Our guaranteed \$3.00 Hat, all styles.

STATE SAVES ON PRINTING

Dunway Does More Than Double Work at Less Cost. SALEM, Or., Nov. 6.—(Special.)—In 1905 the House and Senate journals cost the state \$4.53 per volume. For printing and binding the 1909 journals the state will pay \$2.52 per volume, or considerably less than half what the books cost four years ago, notwithstanding the fact that many more laws were passed and much more business was transacted.

ERNST IS GIVEN ONE YEAR

Proves Itch for Other People's Money Is Incurable. OREGON CITY, Or., Nov. 6.—(Special.)—Circuit Judge Campbell today sentenced Sigmund Ernst to one year in the Penitentiary. Ernst, who has been in the employ of the Continental Gas

LAND BRINGS GOOD PRICE

State Property Is Sold at Vancouver for \$33,000. VANCOUVER, Wash., Nov. 6.—(Special.)—At a public auction of school lands, held this morning in this city at the County Courthouse, \$33,000 worth of lands and improvements were sold.

MILKMAN IS IN JAIL

SERVING TIME FOR RAISING PRICES IN SEATTLE. President of Milk Trust, So-Called, Insists His Imprisonment Is Outrage on Innocent Man. SEATTLE, Wash., Nov. 6.—A. L. Erickson, president of the so-called milk trust, otherwise known as the Seattle Retail Milk Dealers' Association, was taken to the County Jail today to serve a term of ten days' imprisonment for conspiring to increase the price of milk.

OPAL CITY—FUTURE METROPOLIS

Of Central Oregon—See Page 8, Section 4.

JUST AN ECHO OF THE FAIR

WINNERS OF 29 HIGHEST AWARDS AND GOLD MEDALS NOW ON SALE AT EILERS PIANO HOUSE.

Blood And Skin Purification

Is Best and Most Quickly Accomplished By Using Stuart's Calcium Wafers.

AUTO ROAD TO BE BUILT

Highway Will Open Up Central Oregon Homestead Lands. BEND, Or., Nov. 6.—(Special.)—A movement for better roads to the new homestead lands to the southwest of Bend was inaugurated Thursday night at a meeting of the local Board of Trade.

WOMAN IS STRICKEN AS SHE STARTS EAST AFTER 57 YEARS IN WEST

Mary Eleanor Sheyde, Deceased. KALAMA, Or., Nov. 6.—(Special.)—Mary Eleanor Sheyde, a pioneer of the Kalama section, who died in the Panny Padcock Hospital, Tacoma, November 4, aged 67 years, had started in company with her husband and daughter on a visit to her old home in Illinois, but became sick at Tacoma and was taken to the hospital.

WOMAN DIES ABOARD TRAIN

Mrs. Jennie Whitaker Succumbs to Bronchitis While in Berth. GLENDALE, Or., Nov. 6.—(Special.)—Mrs. Jennie Whitaker, a passenger on Southern Pacific train No. 15, en route from Seattle to Oakland, Cal., died in her berth while the train was passing through Cow Creek Canyon this morning.

3000 FARMERS ARE COMING

Kansans Have Contracted to Buy Large Acreage Near Grants Pass. GRANTS PASS, Or., Nov. 6.—(Special.)—Development of the country by the colonization method has been started in Rogue River Valley. Several large projects have been advanced that has caused a general movement in this direction, particularly the talk of an electric line from Grants Pass to Ashland.

WATER THREATENS TOWN

Logs Piled Up by Flood Cause Stream to Seek New Channel. ASTORIA, Or., Nov. 6.—(Special.)—A couple of days ago a boom of logs belonging to the Alger Logging Company and containing about half a million feet of lumber in Skamania creek as a result of the recent floods, and is jammed against the county draw bridge.

KLAMATH PIONEERS MEET

Memories of Early Indian Campaign to Be Perpetuated. KLAMATH FALLS, Or., Nov. 6.—(Special.)—Pioneers of the Klamath Basin in California and Oregon have organized an association with headquarters at Klamath Falls. All per-

I WILL GIVE \$1000

IF I FAIL TO CURE ANY CANCER OF TUMOR I TREAT BEFORE IT POISONS DEEP GLANDS WITHOUT KNIFE OR PAIN.

Advertisement for cancer treatment by Dr. & Mrs. Dr. Chamley & Co., including a portrait of a woman and text about a \$1000 reward.