

**Tull & Gibbs, Inc.**

COMPLETE HOUSEFURNISHERS

**Tull & Gibbs, Inc.**

COMPLETE HOUSEFURNISHERS

**Tull & Gibbs, Inc.**

STORE WILL BE CLOSED ALL DAY TOMORROW—LABOR DAY. "THE WISTARIA" TEA ROOM—ON THE BALCONY—SERVICE FROM 11:30 A. M. TO 5:30 P. M.—MOST POPULAR FOR MID-DAY LUNCH AND AFTERNOON TEA. STORE NOW OPENS AT 8:00 A. M. AND CLOSES AT 6:00 P. M.

THE NEW FALL MODELS IN WOMEN'S, MISSES' AND CHILDREN'S ARE ARRIVING DAILY BY EXPRESS

**We Announce the Opening of Our New Corset Section**



**MODART**  
FRONT LACED CORSETS

—still another step toward more complete merchandizing and a valuable accessory to our ready-to-wear section. On Wednesday next we commence a demonstration of the "Modart" models, with the assistance of Miss L. C. Redding, one of America's foremost corsetiers and who is so well known in Portland and all the Western cities. The interest of all Portland women will center in this important announcement—our opening of a most complete Corset Section and with a line that is justly celebrated for its form-fitting, form-beautifying features and its classic line of grace, poise, style and smartness that distinguishes the lady of taste and refinement. After diligently inspecting the creations of the leading foreign and domestic corset makers, we were unanimous in our selection of the "Modart" Corset, which during the recent style show held in Madison Square Garden, New York, was the center of attraction. Beautiful in outline, of exquisite material, and readily adapted to a wide range of figures, the "Modart" Corsets find favor at first glance with women of good taste and common sense. The "Modart" is the result of years of close study by the greatest expert corset designers of the world today, and is a revelation in scientific corset-making. Having secured the services of Miss B. Suderstrom, of the East, who will have charge of this new section, Portland women are assured of correct and pleasing selection at her hands.



PRESENTING EXCLUSIVELY and FOR THE FIRST TIME IN PORTLAND, THE

**Co-Ed. Suit** The Very Newest, Smartest Style for Misses, Juniors

Unquestionably one of the nattiest creations that have appeared in many months—featuring a very smart and distinctive style for Misses' and Juniors' wear. Besides the Co-Ed, we are showing the Vassar Suit, Coat and Cape for Girls, also very exclusive and novel styles. These will be prominently displayed at next Tuesday's opening—that of our new Corset Section. We have the exclusive sale in Portland of the "Co-Ed" and "Vassar" Suits.



**A Complete Stock of Fall, Winter Bedding**

The Bedding Section is better prepared than ever before to supply your Bedding needs—all grades in Blankets, Comforts, Pillows, etc., and a wide range of prices. Sixth floor.

**BED PILLOWS**—The Chas. E. Emmerich celebrated, guaranteed pillows in all grades—from a good feather pillow at \$1.60 pair, to the best down and live goose feather pillows at, pair... \$11.00  
**SPECIAL, TUESDAY AND WEDNESDAY**—A good, medium-size Feather Pillow at, the pair... \$1.00  
Also a large size feather pillow—regular \$3.75 value, at, pair... \$2.00  
**WOOL BLANKETS**—A complete line of medium and heavy wool Blankets in white, gray, fawn and fancy plaids.  
**SPECIAL, TUESDAY AND WEDNESDAY**—4½-lb. Wool Blankets in white with pink or blue borders—regular \$6.75 values at, pair... \$4.85  
\$9.50 values in strictly all-wool plain white, gray and plaid Blankets—coarse and good wearing Scotch wools, pr. \$6.00

**Introducing Still Another New Section That of the Latest Feather Neckwear**



During his recent visit to New York, our buyer saw his opportunity to make a phenomenal purchase of these beautiful neckpieces. So to introduce these with our New Fur Section, we have decided to offer them as a special inducement and at remarkably low prices. These were received by the importers just previous to the recent advance in tariff, and purchasers will therefore receive the benefit of this timely purchase.

**Real Marabou Scarfs**—2 meters long—3 strand—at \$3.95 and \$4.75  
**Real Marabou Scarfs**—2 meters long—4 strand—at \$5.95, \$7.95 and \$8.75  
**Real Marabou Scarfs**—2 meters long—5 strand—in black, tan, white, light blue and pink—at \$7.50, \$8.75, \$11.50  
**Muffs to match**, extra large, in black and colors, with small real Marabou rope ends—at \$11.50  
**Ostrich Feather Neck Pieces**—plain Ruffs and Boas, also fancy styles, in black, white and colors—at \$7.50, \$10 and up to \$18.75

**Splendid Bargains in the Brass Beds**



Nine Sample Patterns That Show a Reduction That Is Well Worth Considering—In a Two Days' Sale

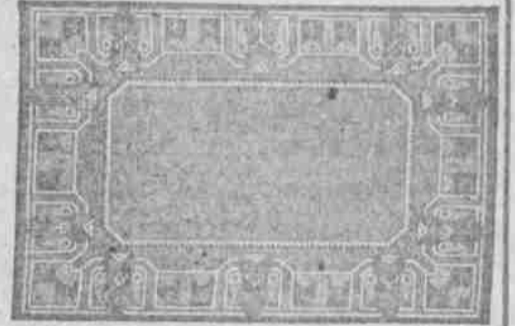
Beds in brass were never so popular as right now. We have selected these nine patterns from our sample display and marked them with the intention of closing out to make room for several new styles. Sale Tuesday and Wednesday.

\$59.50 post-style Brass Bed in satin finish—at \$37.75	\$77.50 continuous-post Brass Bed in satin finish—at \$52.00
\$60.00 continuous-post Brass Bed with swell-foot—satin finish—at \$39.75	\$86.00 heavy 2½-inch pillar-style Brass Bed with square top rails and panels—at \$56.75
\$65.00 continuous-post Brass Bed in satin finish—at \$43.50	\$95.00 Brass Bed with heavy square tubing throughout—in satin finish—at \$59.75
\$67.50 continuous-post Brass Bed in satin finish—at \$48.00	\$110.00 heavy, square pillar-style Brass Bed with square tubing throughout—at \$76.50
\$68.50 heavy continuous-post Brass Bed in satin finish—at \$49.00	

**Arrival of New Fall Stock of Hodges Fiber**

**Matings and Rugs**

The Carpet Department announces their ready-display of the new Fall Hodges Fiber products. The matings show the most dainty effects in this highly artistic and strictly sanitary floor covering—the best thing for sleeping rooms—from 40c yard up. "Hofi" Rugs in a wealth of new designs and colors that stamp them as the "distinctive" rug. "Kaba" Rugs of wool and fiber and in the same designs as the "Hofi," but having deeper and warmer tones, and splendidly adapted to the dining room, living room, and library; in fact any room except where very dainty effects are desired. Ask to see the plain-center "Kaba" Rugs—they are the best thing produced in a low priced plain rug. Carpet Department—sixth floor.



**Folding Screens—New Ones From \$1.60 to \$22**

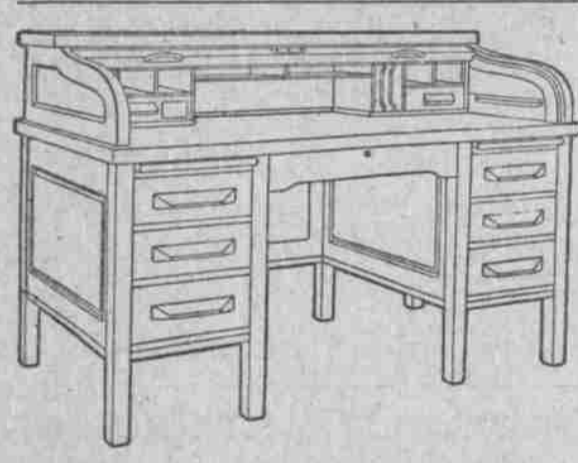
Showing new designs in white enamel, dark oak and mahogany frames—2, 3 and 4 panels, in figured tapestry and burnt wood ornamentation—some with solid wood panels and some burlap filled. Also open panels for selection of filling.  
**SCREEN SPECIALS, TUESDAY AND WEDNESDAY** 3-panel Screens, with square oak frame, in dark finish—unfilled panels. Regular \$1.60 value at... \$1.00  
3-panel hardwood Screens in dark finish, with solid wood panels, 5 feet 3 inches high. Regular \$5.50 value at... \$3.75

**Labor-Saving Laundry Supplies**

No. 1 size Sleeve Board, regular 50c value, for... 40c	No. 2 Galvanized Wash tub, regular 85c value for... 65c	Collapsible Clothes Dryer, regular \$1.65 value... \$1.15	"Lewis" Combination Ironing Board and Step Ladder, a practical piece; regular \$3 value for... \$2.25
Glass Washboard, regular 50c value, for... 40c	Eureka Wall Clothes Dryer, regular \$1.00 value for... 80c	Folding Wash Bench, regular \$2.50 value for... \$1.95	"Rose City" Washing Machine, a dependable washer, very easy motion; sells regularly at \$8.75; special... \$6.50
"Brass King" Washboard, regular 50c value, for... 40c	No. 2 Willow Clothes Basket, regular \$1.10 value for... 90c	"Perfection" Clothes Dryer, regular \$2.50 value... \$1.95	

**A List of Bargain Items Special for Tuesday, Wednesday**

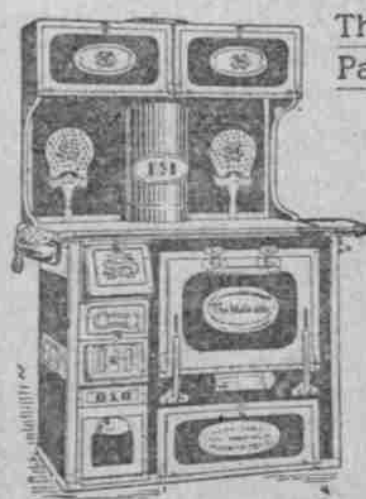
**Finest of Office Furniture Splendidly Shown Here**



**"Leopold" Roll-Top, Flat-Top, Typewriter Desks**

Quality, workmanship and finish in office furniture stand very high in the estimation of practical business men. Our selections are made and our showing maintained with this always in view. Every style and grade in the various pieces that are essential to office furnishing is displayed in our line—Roll-top Desks, Flat-top Desks, Typewriter Desks, Bookkeepers' Desks, Office Tables, Office Chairs, etc. We feature "Leopold" Desks in our showing—the line that is always to be relied upon where quality and up-to-date construction are desired. They meet every demand of the modern office. See the new and practical sanitary designs. Prices the very lowest. Roll-top Desks in the standard pedestal designs, golden oak—as low as \$23.50. Out-of-town inquiries given prompt attention. Send for catalogue.

**Many are Taking Advantage of the Special Range Offer**



The 30 days' Free Trial and the Liberal Payment Terms—\$5 Down, \$5 Month

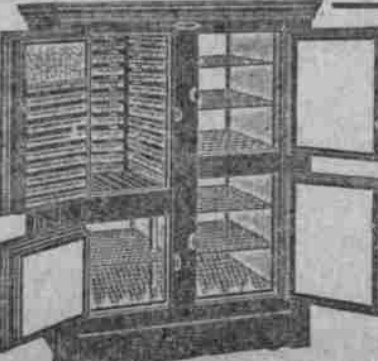
Never in the history of Portland range-selling has such an opportunity as this been presented to intending range-purchasers—an offer unparalleled for its most liberal terms—arranged to meet every demand—to enable every one to place in their home a dependable range. The past week demonstrated the attractiveness of this one month's special buying inducement, many wide-awake homefurnishers taking advantage. We offer you selection of any range in our line. "The South Bend Malleable," the range that is hand-riveted, airtight, built on honor through and through of true steel and malleable iron—the range that will last a lifetime.

The "Supreme," "Crown" and "Capital" Steel Ranges meet the demand for the less expensive cooking apparatus—but nevertheless ranges that embody in their construction the most modern features. We will make liberal allowance when accepting your old stove or range as part payment.

**Season End Sale of Porch Blinds**

We are closing out our Summer stock of Japanese Bamboo and German Wood Blinds—for the porch and sleeping balcony. Splendid values and nearly all sizes.  
6 ft.x8 ft. Bamboo Blinds at \$1.25  
8 ft.x8 ft. Bamboo Blinds at \$1.50  
8 ft.x10 ft. Bamboo Blinds at \$1.75  
4 ft.x8 ft. German Blinds at \$1.50  
6 ft.x8 ft. German Blinds at \$1.75  
8 ft.x8 ft. German Blinds at \$2.00

**Upholstery**—Our Fall patterns in furniture coverings are now arriving, consisting of foreign and domestic fabrics—wool, cotton, mohair and damask—for covering furniture in all grades and finishes. We operate completely equipped workshops for the repairing, reupholstering and refinishing of furniture, and guarantee satisfaction on all work entrusted to our care.



**Continuing the Season-End Sale of Refrigerators**

The wind-up of our left-over stock of this season—comprised mostly of the samples—only one of each kind—McCray Refrigerators—Leonard Cleanable Refrigerators—Sanitary Refrigerators and the Grand Rapids Refrigerators. Select yours for next season. You can buy one on easy payment terms.

\$13.50 Galvanized iron-lined Refrigerator—at... \$10.80	\$31.00 Sanitary, zinc-lined Refrigerator—at... \$24.80
\$18 Sanitary, galvanized iron-lined Refrigerator \$14.40	\$75.00 Leonard Cleanable, enamel-lined Refrigerator... \$60.00
\$21.50 Grand Rapids, galvanized iron-lined Refrigerator—at... \$17.20	\$78.00 Leonard Cleanable, all metal, enamel-lined Refrigerator—at... \$62.40
\$26.50 Grand Rapids, enamel-lined Refrigerator, \$21.20	\$92.00 McCray, porcelain-lined Refrigerator—at \$73.00
\$29.50 Grand Rapids, zinc-lined Refrigerator, \$23.60	\$110 McCray, porcelain-lined Refrigerator—at \$88.00

**High-Grade Art Bathroom Ware**

Bathroom Ware is not a luxury, but a necessity. We have just received a new line of artistic fixtures for the bathroom that are distinctive and unique in design—created by metal craftsmen—ware that is sanitary and will withstand constant usage. Combination soap and tumbler-holders, tumbler and toothbrush holders, inverted tumbler and toothbrush holders, soap dishes, crystal towel bars, glass shelves, etc. All metal parts are of solid brass and in the very highest nickel finish.

