

ROYAL GREETING AWAITING BIG PARTY

Chamber of Commerce Completes Programme for Entertainment of Envoys.

"DECORATE," ITS APPEAL

Distinguished Japanese Guests to Arrive Next Thursday—Big Banquet Arranged—Visitors to Board Special at Vancouver.

Arrangements have been completed by the Chamber of Commerce for the reception and entertainment of the commercial commissioners and trade experts of Japan...

Thursday. 8 A. M.—Party received at train. 10 A. M.—Signifying trip in observation car around the city.

Friday. 9 A. M.—Trip on the steamer Harvest Queen in view of the harbor and inspect various industries...

A request will be made that all business houses in the city be decorated in the colors of the Japanese nation...

Baron Shibusawa, the leader of the visiting party, is one of the greatest politicians, business men, industrial organizers, social reformers and philanthropists of the Mikado's realm...

Two achievements of the Baron are claimed particularly by the Japanese. He assisted in the commercial and industrial development of the country by the improvement of economic society...

The Baron has come to America to see things. He said in Seattle that he considered one "seeing" better than 100 "hearings."

The visiting party includes many of the most distinguished politicians, educators and business men of the Japanese nation. The list follows:

From Tokyo—Baron Shibusawa, president Daiichi Bank; Baroness Shibusawa; Buyei Nakano, president Chamber of Commerce...

From Osaka—Mikio Doi, president Osaka Electric Light Company, president Chamber of Commerce; Tokugoro Nakahashi, president Osaka Shosen Kaisha (S. S. Co.); Bokushin Oki, president Sulphuric Acid Company...

From Kyoto—Jiro Nishimura, president Chamber of Commerce, textile merchant, member of House of Representatives; Selgi Nishiki, secretary Chamber of Commerce.

From Yokohama—Kabei Otani, president Chamber of Commerce, exporter, (tea); Kinaku Soda, member Chamber of Commerce, banker; Akio Shio, president Silk Conditioning House, special member Chamber of Commerce, lawyer.

From Kobe—Kojiro Matsukawa, president Chamber of Commerce; Mrs. and Kumajiro Taki, manufacturer of fertilizers; Shinkichi Tamura, exporter, (wheat) Chamber of Commerce, banker.

From Nagoya—Kinokuni Kanno, member Chamber of Commerce, banker; Tomonobu Ueyama, vice-president Chamber of Commerce, director Sharyo Kaisha (Wheel Company); Morimatsu Ito, banker.

On September 9 only will we sell round trip tickets to Chicago for \$72.50, good going and returning via any direct route...

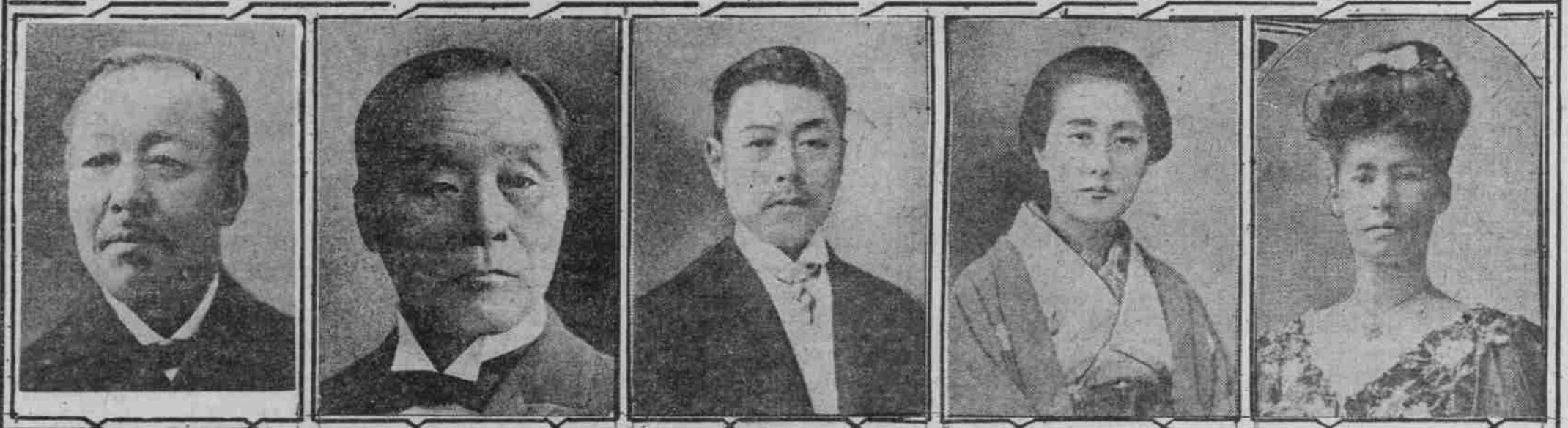
Twenty of the Distinguished Japanese Trade Commission to Arrive Here Thursday



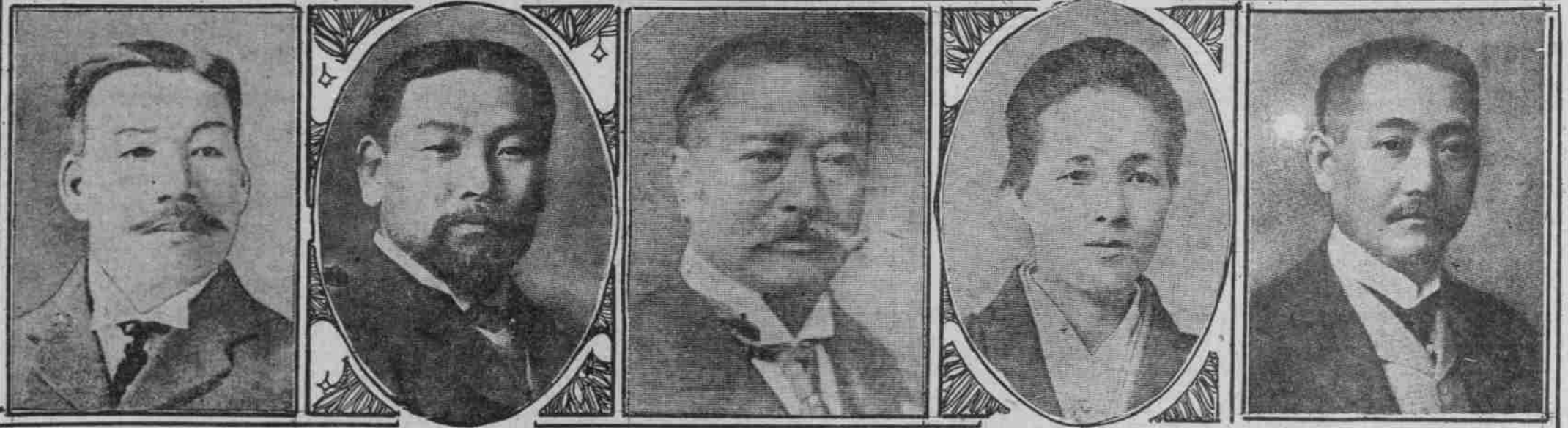
BARON HUGHIN SHIBUSAWA, PRES. DAICHI BANK. BARONESS SHIBUSAWA. HEIYAYEMON HIBIYA, VICE PRES. CHAMBER OF COMMERCE. SAKUTARO SATAKE, MEMBER HOUSE OF REPRESENTATIVES. K. IWAHARA, DIRECTOR, MITSUI & CO.



NARAZO TAKATSUJI, DIRECTOR KANEGAFUCHI COTTON MILL CO. SUYUO IWAYA, MEMBER HAKUBUNKAN PUBLISHING CO. BOKUSHIN OKI, MEMBER HOUSE OF REPRESENTATIVES. YEINOSUKE IWAMOTO, BROKER ASAKA STOCK EXCHANGE. KAMEI OTANI, PRES. YOKOHAMA CHAMBER OF COMMERCE.



BUEI NAKANO, PRES. TOKIO CHAMBER OF COMMERCE. MICHIO DOI, PRES. OSAKA CHAMBER OF COMMERCE. EIKINOSUKE HARA, MGR SHIMIZU-GUMI. MRS. HARA. MRS. IWAHARA.



ZENJURO HORIKOSHI, PRES. HORIKOSHI FIRM. SHINKINGU TAMURA, PRES. TAMURA & CO. BARON NAIBU KANDA, INSTRUCTOR OF FOREIGN LANGUAGES NOBLES SCHOOL. BARONESS KANDA. KOJIRO MATSUKAWA, DIRECTOR OF KAWASAKI DOCKYARD.

SILETZ CASE NEAR END

ATTORNEY LAFFERTY SAYS PATENTS ARE ASSURED.

Land-Office Lawyer Secures Introduction of Law to Aid Settlers.

A. W. Lafferty, land office attorney, who returned yesterday from Washington, D. C., is quite confident that the Siletz settlers will receive patents to their claims within a few months.

"This bill would have been considered at the recent special session but for the fact that the time was taken up entirely in the consideration of the tariff question."

less successfully conducting a bunco game on Western homeseekers in a number of the Eastern states.

MRS. E. GILBAUGH DEAD

Old Resident of Oregon Succumbs at East Side Home.

Mrs. Elizabeth Gilbaugh, wife of J. W. Gilbaugh, of 1008 Belmont street, died at the family residence last Friday evening.

Sealed bids will be received by W. H. Wehrung, president of the Oregon Commission, at Seattle, until Wednesday noon, Sept. 15.

19 FAST GAMES PLAYED

IRVINGTON TENNIS CLUB COURTS KEPT BUSY.

McAlpin Beats Ewing—Contests Held Despite Heat of Day—Big Matches Tomorrow.

In spite of the heat, unusually fast matches were pulled off yesterday on the Irvington Tennis Club courts in the opening day of the annual Fall handicap and club championship tennis tournament.

Yesterday's scores follow: Mixed handicap doubles—Miss Carstena and Warriner (w-o) beat Miss Weidner and Snow (w-o) 6-2, 6-2.

ATTENDANCE 30,000 DAILY

Seattle Expects Total for Exposition to Reach 4,000,000.

SEATTLE, Sept. 4.—A million paid admissions for the month of September at the Alaska-Yukon-Pacific Exposition is the confident expectation of President Childberg.

SEPTEMBER EXCURSIONS

Special Round Trip Excursion Tickets to the East will be on sale September 9 by the Canadian Pacific.

Lutherans to Observe Day. MARSHFIELD, Or., Sept. 4.—(Special.)—Furthering of the faith of the Lutheran belief along the Pacific Coast is the chief topic of the Columbia conference of the Swedish Lutheran Synod in session this city.

JAPAN DAY DRAWS 7000 TO SEE FAIR

Mikado's Subjects Parade Streets, and Visitors Exchange Speeches.

FRIENDLINESS IS KEYNOTE

Baron Shibusawa Believes Present Visit of Commercial Leaders Will Cement Peace Relations Between Two Nations.

SEATTLE, Sept. 4.—Never outside of Asia have so many Japanese been assembled as were gathered in the Alaska-Yukon-Pacific grounds today to celebrate Japan day.

In the two parades, that through the city streets and the National Pacant through the fair grounds, the mixing of old and new Japan was somewhat incongruous, but everything was picturesque.

Many Speeches Exchanged. The Japanese are as fond of making and listening to speeches as the Americans are, and the commercial commissioners spent nearly half the afternoon in the Exposition auditorium, exchanging expressions of good will with their American hosts.

Commerce Basis of Interest. "Whereas the two important missions just mentioned were sent by the government of Japan, the present one is sent by the people and its object is to complete and consolidate for all time the relations of good neighborhood and friendship so well promoted by the two political missions."

Too Much Entertainment. At 5 o'clock there was a spectacular display of daylight fireworks in honor of the commissioners. Later they were entertained at dinner in the New York building by citizens of Seattle.

FORMER PORTLANDER DIES

Gustave E. Burke, Once Local Merchant, Succumbs in Alaska.

Gustave Edward Burke, one of the best-known mining operators in Alaska, and a former resident of Portland, Or., died at Dawson, Alaska, August 18, from an attack of appendicitis.

Mr. Burke was in the cloak and suit business in Portland for ten years as a member of the firm of Burke & McDonald. He was born at Mokulille Hill, Colavara County, Cal., 49 years ago.

The greatest ever, "Imperial" First time on the Coast "Imperial."

When You Quit Coffee and make POSTUM your morning cup, you will know how much the change is worth to you in health benefit. Better digestion, sound sleep, stronger nerves, and a clear brain soon follow. "There's a Reason" Postum Cereal Company, Limited, Battle Creek, Mich.